


THE DOXFORD WORKS

An abstract graphic consisting of several horizontal and vertical bars of varying lengths, arranged in a grid-like pattern on the right side of the page.

3 ADMIRAL WAY
DOXFORD INTERNATIONAL
SUNDERLAND
SR3 3XW

TO LET

Brand new refurbishment scheme in a premier business park location with office space available from **1,000** to **54,982 sq ft**



CGI's for illustration purposes only

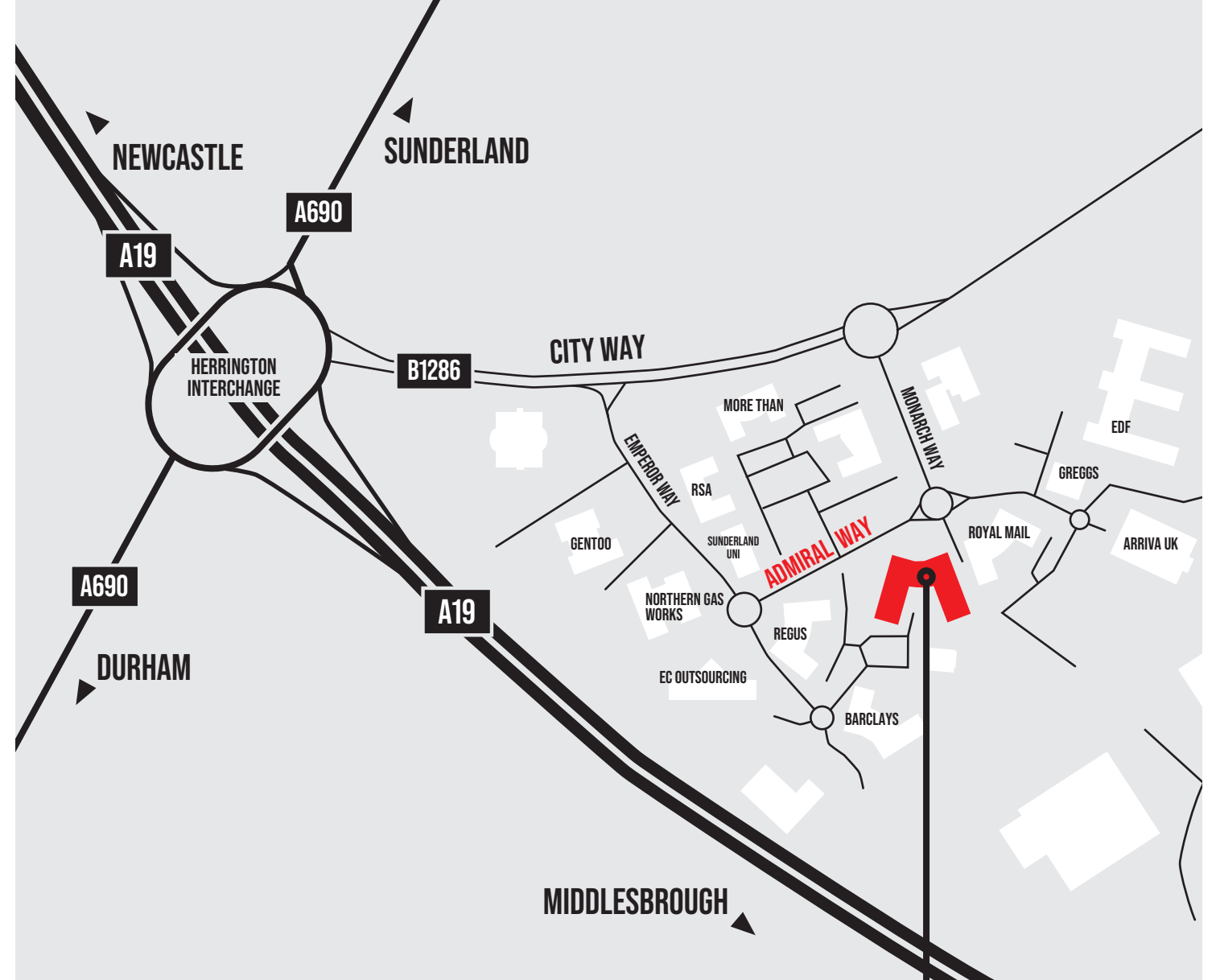
THE DOXFORD WORKS

Inspired Work Spaces by
North East Commercial



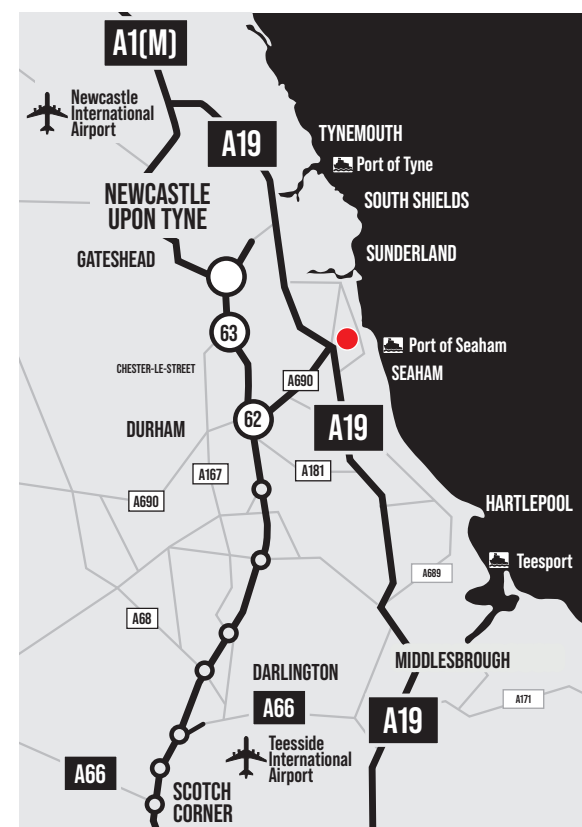
LOCATION

Doxford International is the principal business park in the Sunderland region, located at the junction of the A19 and A690 on the south western fringe of Sunderland city centre. The park provides circa 1.3 million sq ft of high specification office space on a site of approximately 34 hectares (85 acres).



THE DOXFORD WORKS

Doxford is served by 11 different bus routes, connecting the park directly to Sunderland, Newcastle upon Tyne, Durham, and the wider Wearside region. International communications are provided by Newcastle and Teesside International Airports, both located within 30 minutes' drive time.



THE
DOXFORD
WORKS



A19 NORTH & SOUTH

Herrington
Interchange

Food and Beverage
Amenity Provision

B1286

DOXFORD BUSINESS PARK

PROPERTY HIGHLIGHTS

Doxford Works is set within Doxford International Business Park, which is the home to national and local tenants such as Barclays, Arriva, Royal Mail, and Gentoo.

The property offers office accommodation over three floors, set across two wings, and can be occupied on a full-building, full-floor or half-floor (wing) basis.

The ground floor has been subdivided to offer a mix of smaller suites which are complimented by an array of meeting rooms, break out space, barista station and games area.



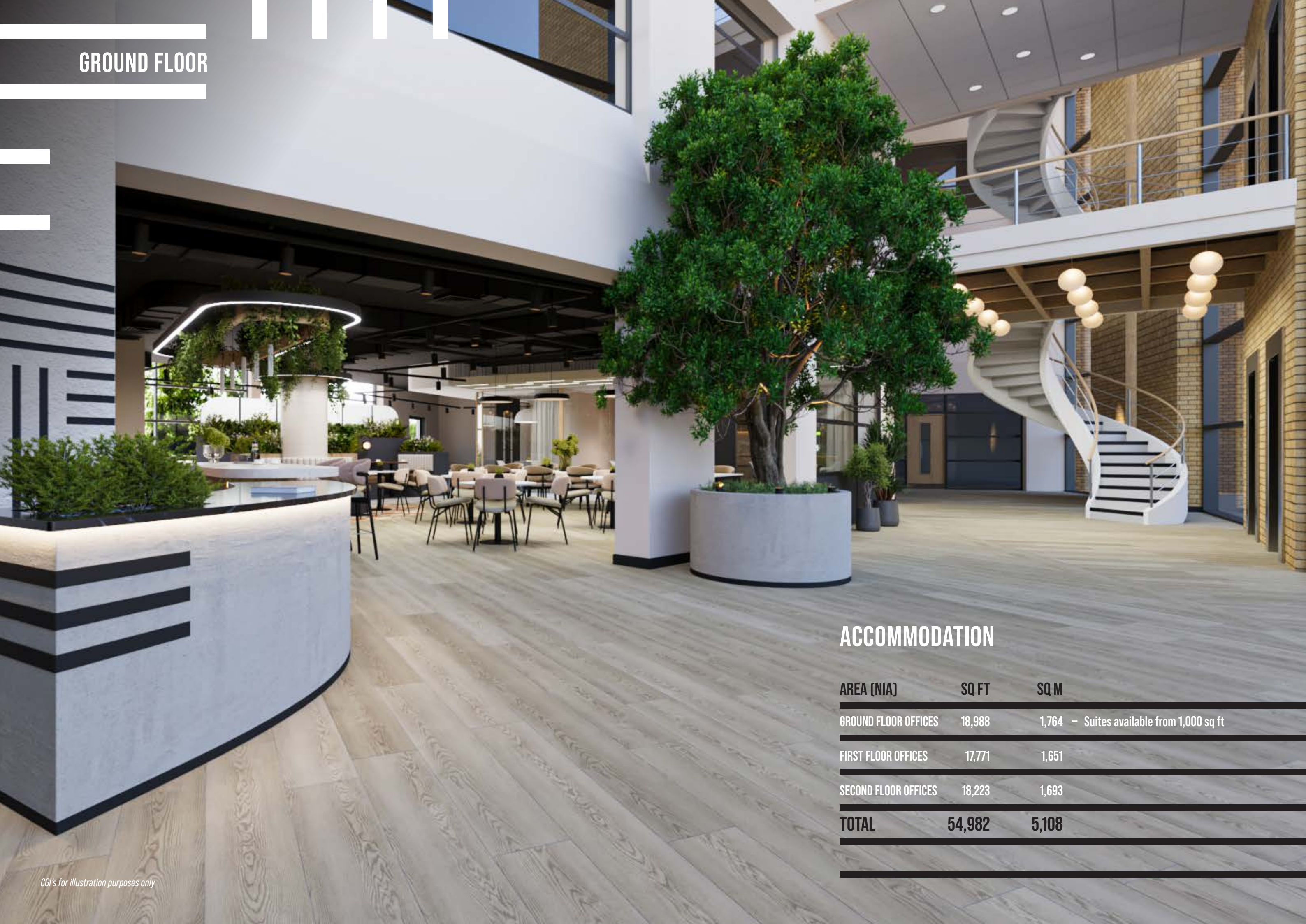
CGI's for illustration purposes only



SPECIFICATION

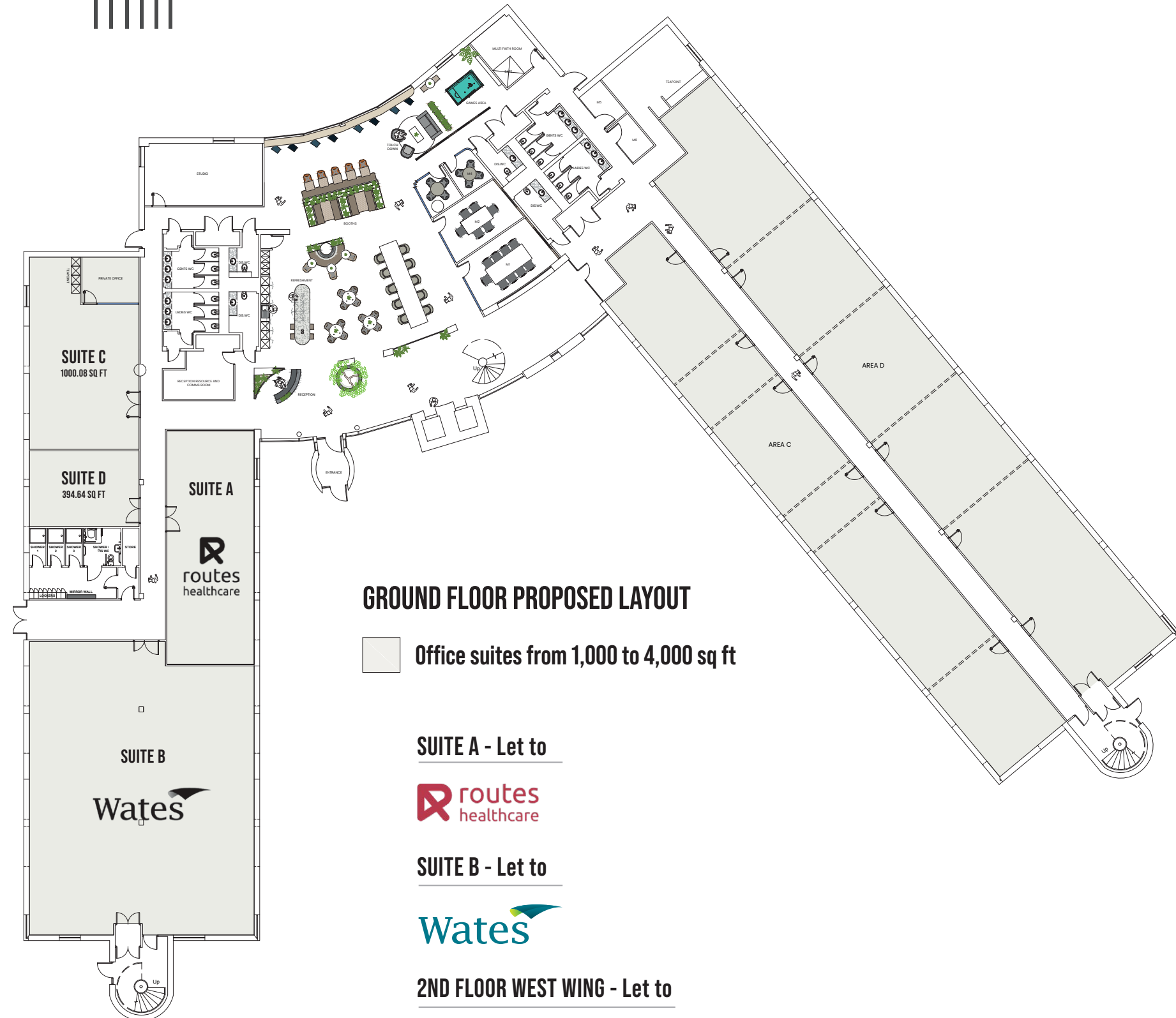
- + Grade A office refurbishment
- + Range of suite sizes available
- + Abundance of communal and amenity space
- + Bookable meeting rooms on site
- + Café and games area
- + Showers and changing facilities
- + On site reception
- + LED lighting
- + Open plans large floorplates
- + WC facilities on each floor
- + 2 x 8 person lifts
- + Raised access floor
- + 240 car park spaces (1 space per 232 sq ft)
- + Projected EPC B rating

GROUND FLOOR



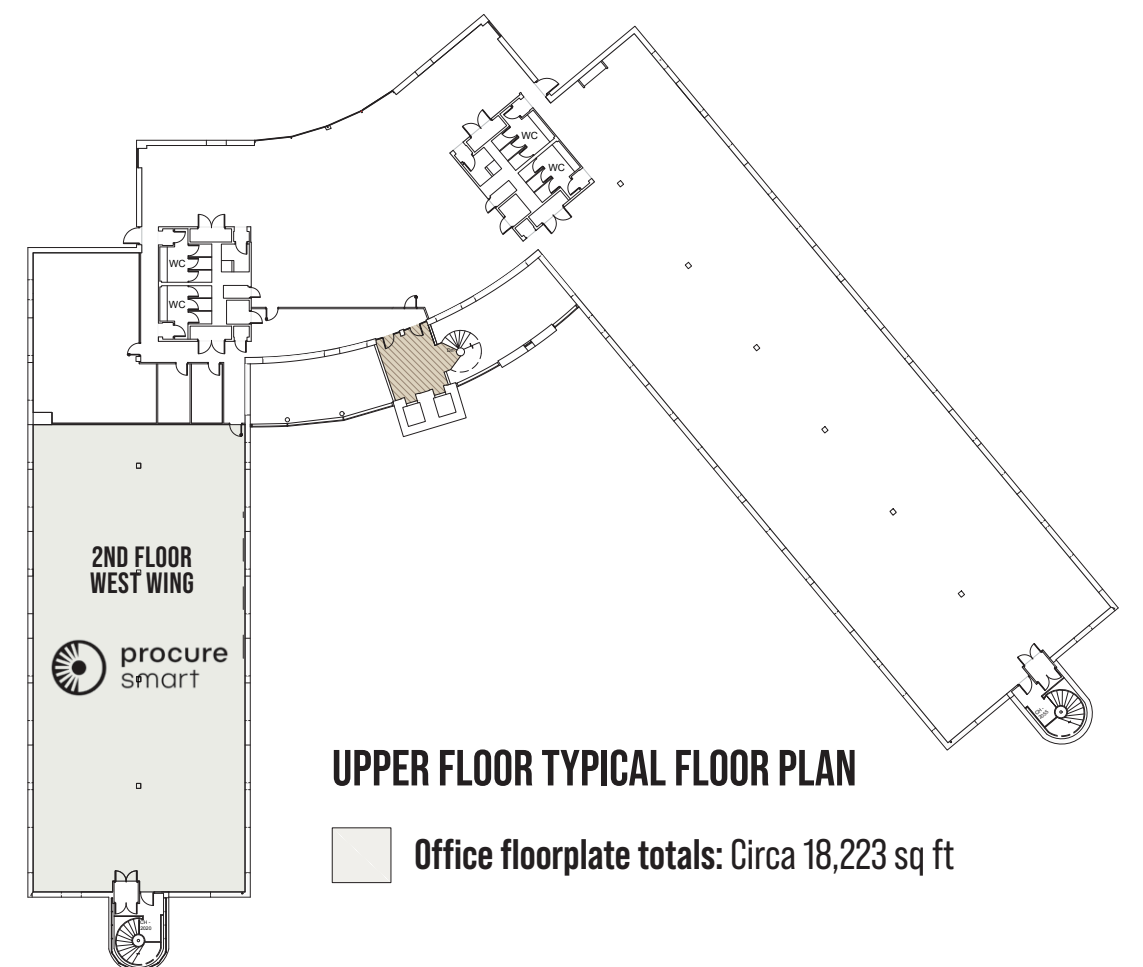
ACCOMMODATION

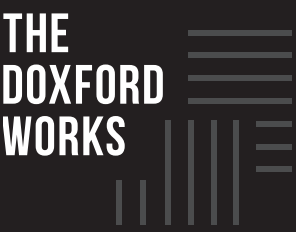
AREA (NIA)	SQ FT	SQ M
GROUND FLOOR OFFICES	18,988	1,764 – Suites available from 1,000 sq ft
FIRST FLOOR OFFICES	17,771	1,651
SECOND FLOOR OFFICES	18,223	1,693
TOTAL	54,982	5,108



FLOOR PLANS

We are committing to the ground floor works speculatively; therefore, we can offer occupiers fitted or unfitted office space within **The Doxford Works** from 1,000 sq ft.





RENT

From £12.00 psf per annum exclusive of business rates, service charge and all other outgoings.

Full suites also available on all inclusive basis or turn key desk rate.

TERMS

The premises are offered on a new effective Full Repairing and Insuring basis for a term to be agreed.

VAT

VAT will be charged at the standard rate.

SERVICE CHARGE

There is a service charge in place to recover the costs of the landlord's upkeep of the common areas and external structure of the building. There will also be an estate service charge payable. Both costs are available upon request.

LEGAL COSTS

Each party is to be responsible for their own legal costs.

RATES

Available upon request.



CGI's for illustration purposes only

THE DOXFORD WORKS

3 ADMIRAL WAY
DOXFORD INTERNATIONAL
SUNDERLAND
SR3 3XW

CONTACT JOINT AGENTS:

PARKER KNIGHTS

REAL ESTATE

MICHAEL DOWNEY

T: 0191 649 8924

mdowney@parkerknights.co.uk

JOHN ROUTLEDGE

T: 0191 649 8924

jroutledge@parkerknights.co.uk

**AVISON
YOUNG**

TONY WORDSWORTH

T: 0191 269 0508

tony.wordsworth@avisonyoung.com

ADAM LAWSON

T: 0191 269 0064

adam.lawson@avisonyoung.com

Inspired Work Spaces by
North East Commercial

IMPORTANT NOTICE: Every reasonable effort has been made to ensure accuracy and to check the facts contained in these particulars are complete. Interested parties are strongly advised to take appropriate steps to verify by independent inspection or enquiry all information for themselves and to take appropriate professional advice. (i) No description or information given about the site or its value, whether written or verbal or whether or not in these particulars ("information") may be relied upon as a statement of representation or fact. (ii) Any areas, measurements or distances given are approximate only. (iii) Any reference to alterations to, or use of any part of the site is not a statement that any necessary planning, building regulations or other consent has been obtained. These matters must be verified by any intending buyer / lessee. (iv) Any buyer / lessee must satisfy himself by inspection or otherwise as to the correctness of any information given. July 2025.

Designed & produced by www.creativestreakdesign.co.uk Ref: CSD/2420