



200

BROOMIELAW

Sustainability





# Mission Statement

**We care about the planet and have embedded sustainable technology to help our occupiers reduce their carbon footprints and meet future environmental targets.**

The combination of renewable energy, smart building design, high quality specification and intelligent technology has made 200 Broomielaw one of the most energy efficient office developments in Scotland.

- \_ Outstanding by design
- \_ All electric
- \_ Green connections
- \_ A focus on wellbeing
- \_ Nothing is wasted



200 Broomielaw has achieved an EPC A rating, the highest certification for energy efficiency, designed to both minimise embodied carbon and be low carbon in operation.







# Outstanding By Design



## EPC A Rating

200 Broomielaw has the highest energy efficiency rating available and demonstrates the impact of the targeted measures introduced during the refurbishment such as photoelectric controls (dimming) in the lights and demand control ventilation which are controlled via CO2 sensors on the floors.



## CO<sub>2</sub> Footprint

Compared with similar new build offices, the embodied carbon of 200 Broomielaw has been significantly reduced by maintaining the existing substructure and superstructure and introducing new energy efficient mechanical and electrical systems.

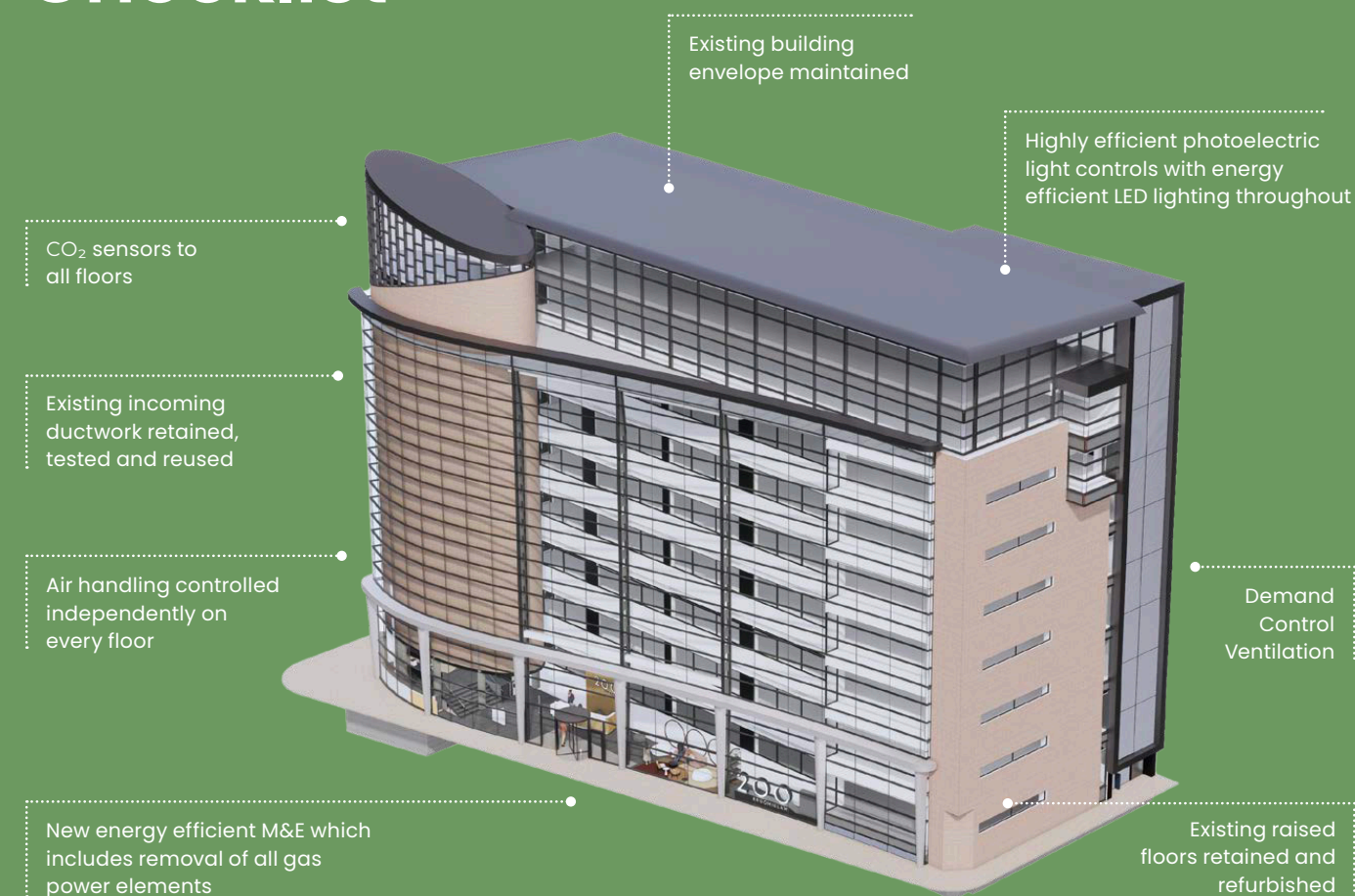


## Circular Economy

We reduced the impact of construction materials through reuse, refurbishment, maintenance and repair, and any new materials have been specified to minimise material wastage.



# Improvement Checklist





# All Electric

200 Broomielaw is fully electric from 100% renewable sources to minimise the building's environmental impact, with all gas completely eliminated from the building.

## Efficient Technologies

The mechanical design is centred upon the use of efficient technologies, for example underfloor heating in the reception area, which distributes heating more evenly than radiators.

## Energy Autonomy

Each floor has its own M&E system and is able to control its own consumption – independent from all other floors.



## Green Connection



### Excellent Connections

Glasgow's active travel network is on our doorstep and by using it, our occupiers can reduce their daily travel footprint and cut personal CO2 emissions.

### End-Of-Trip Facilities

200 Broomielaw is fully equipped for active travel with extensive cycle storage, e-bike charging points, high quality changing facilities and drying rooms.

### E-Mobility

With numerous electric vehicle charging points, we support e-mobility and help our occupiers offer a wide choice to their employees to increase attractiveness of the workplace.



## A Focus On Wellbeing



### Move Inside

200 Broomielaw provides for space to exercise inside the building, that can be booked by occupants. In connection with the end-of-trip facilities, employees can exercise at any time of day or year.

### Move Outside

The building provides direct access to the Clyde Walkway and the city's cycle network; ideal for a cycle, walk or even a run.

### Hygiene

200 Broomielaw features touch-free technology throughout the building to aid in the comfort and wellbeing of occupants.



## Nothing Is Wasted



### Waste Management

A tailored waste management plan for 200 Broomielaw ensures that 100% of the waste is diverted from landfill and recycled to as high a degree as possible.

### Energy From Waste

Where appropriate general waste will be turned into EFW (Energy from Waste), and food waste converted into gas with the power generated used to operate the bin lorries.





A BUILDING OF  
AM ALPHA



**Alex MacKay**

0141 567 6628

[alex.mackay@eu.jll.com](mailto:alex.mackay@eu.jll.com)



**Fergus MacLennan**

0141 266 0571

[fergus@adaptcommercialproperty.com](mailto:fergus@adaptcommercialproperty.com)

Adapt Commercial Property / JLL on their own behalf and for vendors or lessors of this property, whose agents they are, gives notice that: 1/ The particulars are produced in good faith, but are a general guide only and do not constitute any part of a contract. 2/ No person in the employment of the agent(s) has any authority to make or give any representation or warranty whatsoever in relation to this property. 3/ The property is offered subject to contract and unless otherwise stated all rents are quoted exclusive of VAT. 4/ Nothing in these particulars should be deemed a statement that the property is in good condition, or that any services or facilities are in working order. 5/ Unless otherwise stated, no investigations have been made regarding pollution, or potential land, air or water contamination. Interested parties are advised to carry out their own investigations if required. June 2023. Design by Ninetwo.