

**fisher
german**

Unit 22, Sanders Road Industrial Estate

Bromsgrove, B61 7DG

Leasehold
Industrial/Warehouse Unit

2,920 Sq Ft (271.27 Sq M)



To Let | £27,740 pa



Key information



Rent
£27,740 pa



Rateable Value
£24,500



EPC Rating
D

Unit 22, Sanders Road Industrial Estate

2,920 Sq Ft (271.27 Sq M)

Description

Unit 22 comprises an end-of-terrace industrial unit of steel portal frame construction with brick elevations, surmounted by a clad roof incorporating translucent roof panels.

Internally, the unit provides an open-plan warehouse including a concrete floor, lighting, and an eaves height of approximately 4.1 m, rising to an apex of 5.8 m.

Access is provided via a manual roller shutter door measuring approximately 3m (W) x 3.5m (H) to the front elevation. The accommodation also includes a ground floor office, accessed via a separate pedestrian entrance, along with kitchen and WC facilities.

Externally, the unit benefits from dedicated car parking and loading apron to the front of the unit.

Amenities



24/7



Parking



Motorway

Location

Sanders Road Industrial Estate is located to the south-east of Bromsgrove town centre, within close proximity to the A38 approximately 0.5 miles west and the M5 motorway approximately 3.5 miles north. The estate comprises of twenty two industrial units, set within landscaped grounds, and is accessed via Sherwood Road.

Accommodation

Description	Sq Ft	Sq M
Unit 22, Sanders Road Industrial Estate	2,920	271.27

Locations

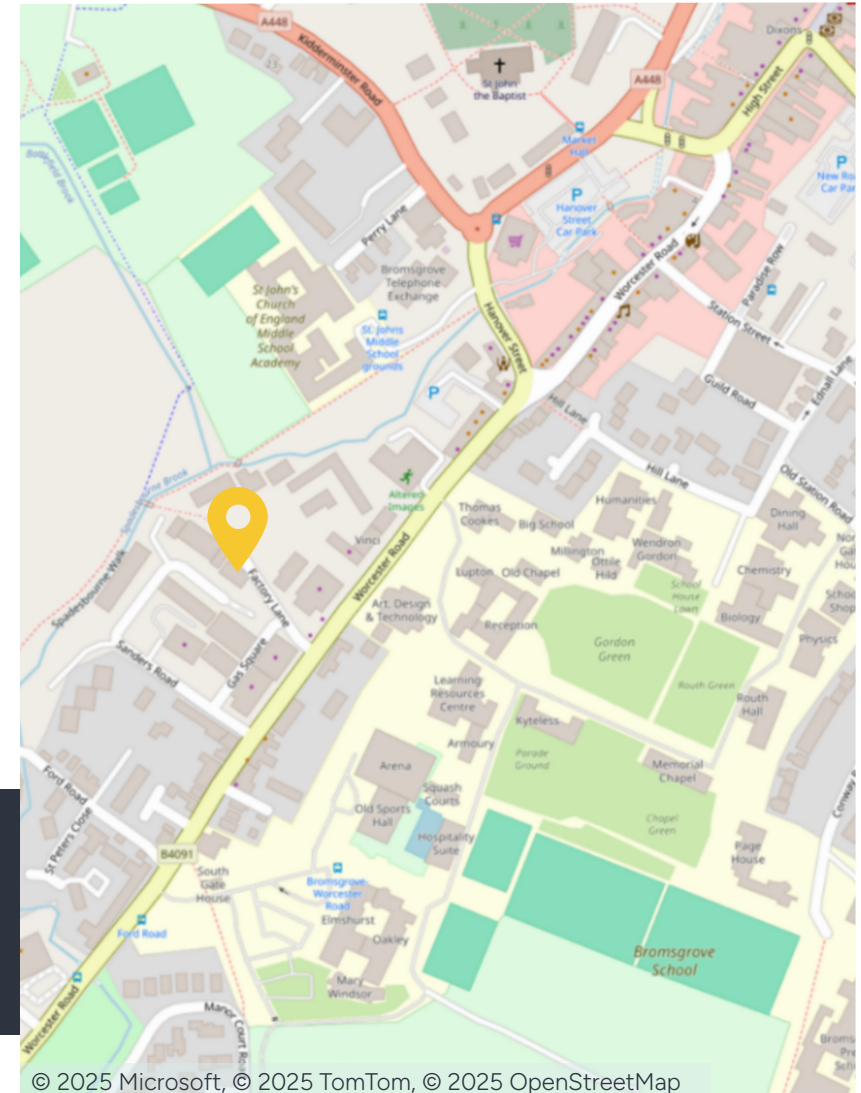
Bromsgrove: 1 miles
M5 J4: 3.5 miles
M42 J1: 4.5 miles
Birmingham: 14 miles

Nearest station

Bromsgrove: 1.5miles

Nearest airport

Birmingham International: 21.6 miles



Further information

Guide Rent

£9.50 per sq ft exclusive of VAT (£27,740 per annum).

Tenure

The property is available by way of a new lease with terms to be agreed.

Business Rates

Rateable Value £21,500
2025/2026 rates payable 49.9p in the £.

Occupiers will be responsible for paying business rates directly to the local authority.

Services

Mains gas, water, electricity and drainage are all available on site.

We confirm we have not tested any of the service installations and any occupiers must satisfy themselves as to the state and condition of such items.

Service Charge

The tenant will pay an estate service charge relating to the maintenance of the common parts.

Legal Costs

A contribution will be payable towards the landlord's legal costs.

Insurance

The landlord will insure the building and recover the cost from the tenant.

Fixtures & Fittings

Any fixtures and fittings not expressly mentioned within these particulars are excluded from the letting.

EPC

The EPC rating is D.

References/Deposit

The successful tenant will need to provide satisfactory references for approval. The landlord may also request a 3/6 month deposit.

Anti Money Laundering

The successful tenant will be required to submit information to comply with Anti Money Laundering Regulations.

VAT

VAT is chargeable in respect of this transaction.

Viewings

By prior arrangement with the sole agents.



Contact us

Viewings by appointment only.

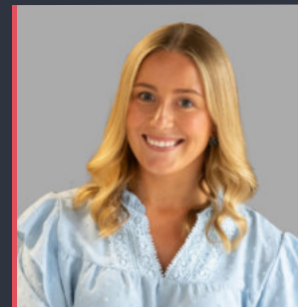
To arrange a viewing, please contact:



Lauren Allcoat-Hatton

01905 728 449

lauren.allcoat-hatton@fishergerman.co.uk



Sophie Newtonn

01905 728 444

sophie.newton@fishergerman.co.uk

Please note: Fisher German LLP and its Joint Agents give notice that: 1. They have no authority to make or give any representation or warranty on any property whether on their own behalf or on behalf of their clients or otherwise. 2. They do not owe any duty of care to you and assume no responsibility for any statements, representations, warranties or otherwise made in the particulars and you should not rely on those in the particulars. 3. The particulars are produced in good faith are set out as a general guide only and do not constitute or form an offer or a contract or part thereof. 4. Any photographs, descriptions, plans, measurements, distances and any other details in the particulars are approximate estimates only taken as the property appeared at the time and should not be relied upon as factually accurate. 5. Fisher German assumes prospective purchasers/tenants have carried out inspections to satisfy themselves that the information in the particulars is correct.

Particulars dated July 2025. Photographs dated July 2025.



This brochure is fully recyclable