



REMENHAM HOUSE

Regatta Place, Marlow Road, Bourne End, SL8 5TD



Versatile, Modern Office
Suites with Parking



2,360 sf to 4,932 sf
To be refurbished



REMENHAM HOUSE

Location

Remenham House enjoys an ideal position at the end of Bourne End's vibrant Parade, offering access to a variety of local amenities including Costa Coffee, M&S Simply Food, and Tesco Express. Strategically located just 2 miles from the A404, the property provides swift connections to the M40 (J4) and M4 (J8/9) motorways.

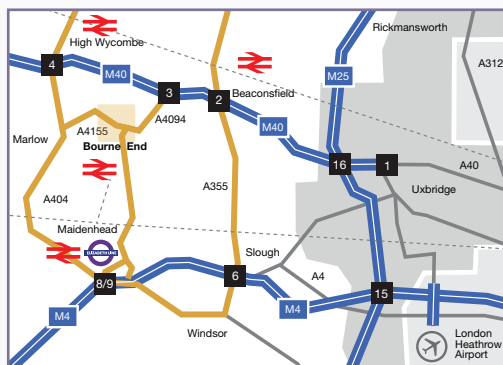
Bourne End railway station is a short 5-minute walk, offering services via Maidenhead to London Paddington (from 35 minutes) and Reading (from 29 minutes). Maidenhead station also benefits from the Elizabeth Line, providing fast, cross-London connectivity.

Terms:

Available by way of a new effective fully repairing and insuring lease for a term to be agreed

Rent:

Upon application



Specification

The accommodation comprises two self-contained office suites, on first and second floors, featuring:

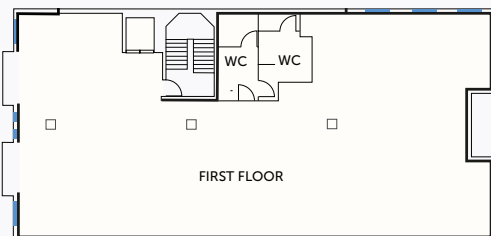
- Air conditioning
- Stylish shared reception area
- Lift access
- Independent WC facilities
- Allocated on-site parking
- EPC: current: B, target: A

First floor

2,572 sf (238.9 sqm)

Second floor

2,360 sf (219.3 sqm)



Mark Harris
07598 450586
mark@pagehardyharris.co.uk

Sophie Holmes
07763 565056
sophie@pagehardyharris.co.uk



Adrian Dolan
07887 936117
adriand@dbk.co.uk

Elliot Mackay
07825 224724
elliottm@dbk.co.uk

Misrepresentation Clause. These particulars are set out as a general outline only for the guidance of intending purchasers or lessees and do not constitute the whole or any part of an offer or contract. The information is compiled and given in good faith but without any responsibility whatsoever. Intending purchasers or tenants should not rely on them as statements of representations of fact. All prices and rents quoted exclusive of VAT. Specification and finishes subject to change, furniture shown is not included in any transaction. Oct. 2025

Owned and Managed by

