



# Chilworth House

HAMPSHIRE CORPORATE PARK, TEMPLARS WAY, CHANDLERS FORD, SO53 3RY



COMING SOON

## TO LET

Modern Headquarters Offices with Parking

Out of Town Location with Excellent Transport Links to M27, M3, Rail and Air

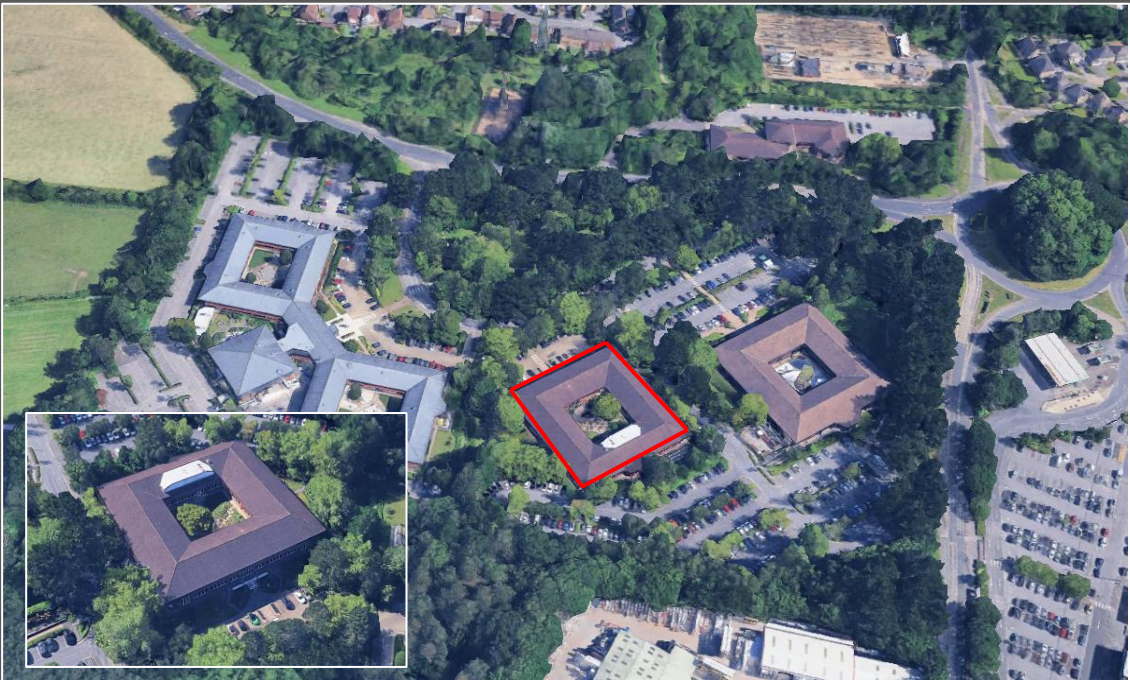
Up to 40,000 ft<sup>2</sup> (3,716 m<sup>2</sup>)

Description

Chilworth House is a detached office building on an impressive split-level site. The ground floor provides a large reception area. There are then two upper floors forming office space. The offices provide open plan space and benefits from views over the central courtyard. The space includes LED lighting, suspended ceilings, raised floors and air-conditioning.

Specification

- Reception with security arrangements
- Disabled access
- Air conditioning
- Allocated parking



Floor Area	Sq Ft	Sq M
Up to 40,000 sq ft available	40,000	3,716





Location

Hampshire Corporate Park is an established and well looked after business park on the outskirts of Eastleigh, close to Southampton and the motorway network. The park offers excellent accommodation in a highly desirable location. Occupiers include: **Ageas, Aviva Health, Coleman Byrant, NatWest, New Hampshire Corporate.**

Terms

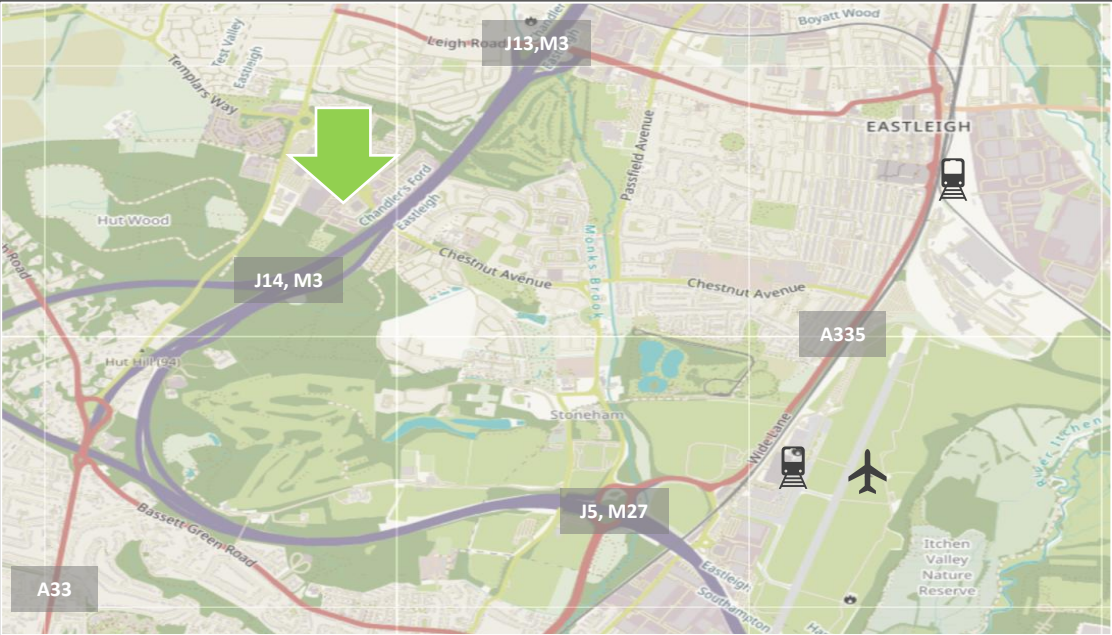
The property is available on a new lease from the landlord. Rent on application.  
A service charge is payable – full details on request.

Business Rates

Occupiers are advised to confirm Business Rates payable with Eastleigh Borough Council or via [www.voa.gov.uk](http://www.voa.gov.uk).



Destinations	Miles
Junction 13, M3	1.0
Junction 5, M27	1.5
Southampton Airport Parkway	2.0
Southampton Airport	2.0
Eastleigh Town Centre	2.9
Southampton City Centre	5.5



Chilworth House, Hampshire Corporate Park, Chandlers Ford SAT NAV: SO53 3RY

VIEWING AND FURTHER INFORMATION  
*Viewing strictly by prior appointment*

Steven Williams Realest 07761 082986 <a href="mailto:steven.williams@realest.uk.com">steven.williams@realest.uk.com</a>	Lauren Udall Realest 07799 623239 <a href="mailto:lauren.udall@realest.uk.com">lauren.udall@realest.uk.com</a>
--	---

**realest**

023 8202 3999

[realest.uk.com](http://realest.uk.com) 



023 8202 3999 • [www.realest.uk.com](http://www.realest.uk.com) • [info@realest.uk.com](mailto:info@realest.uk.com)

Realest give notice that: a. the particulars are set out as a general outline for guidance and do not constitute an offer or contract; b. all descriptions, dimensions and other details are believed to be correct, but any intending purchasers, tenants or third parties should not rely on them as statements or representations of fact; c. All properties are measured in accordance with the RICS property measurement, 1st Edition May 2015 (incorporating IPMS) unless designated NIA/GIA/GEA, in which case properties are measured in accordance with the RICS Code of Measuring Practice (6th Edition); d. Any images may be computer generated. Any photographs show only certain parts of the property as they appeared at the time they were taken – some of the images are archive taken prior to previous occupation.