

RETAIL UNIT TO LET - WWW.ASDA.LIVE.JLL.COM

- On the Instructions of ASDA
- ASDA Store 84,869 sq ft
- 600 Customer Car Parking Spaces

Location

The subject premises are situated in a good trading position within the heart of Crewe town centre. The Victoria Centre is a modern scheme that links the Asda Superstore and associated car parking with the main town centre. Tenants within the scheme include W H Smith, Bon Marche, Ryman Stationer, Cash Convertors and Thomson Travel Agents.

Accommodation

The property comprises a ground floor lock up shop unit. Loading and servicing is directly from the rear via the shared service area.

The premises provide the following approximate net internal floor areas:

Description	Sq ft	Sq m
Internal Width	19'2"	5.80
Internal Depth	41'9"	12.78
Ground Floor Sales	719	66.80

Tenure

New effectively Full Repairing and Insuring lease for a term by arrangement.

Rent

£7,500 per annum

exclusive of rates, service charge and VAT (if applicable).

Rates

Rates Payable: £6,986.00 per annum

(based upon Rateable Value: £14,000 and UBR: 49.9p)

Interested parties should verify these figures with the Local Authority.

Service Charge

Available upon request.

EPC

Available upon request.



Viewing & Further Information

Viewing is strictly by appointment with:

Contacts

Charles Smith

t: +44 (0)113 235 5286

e: charlesedward.smith@eu.jll.com

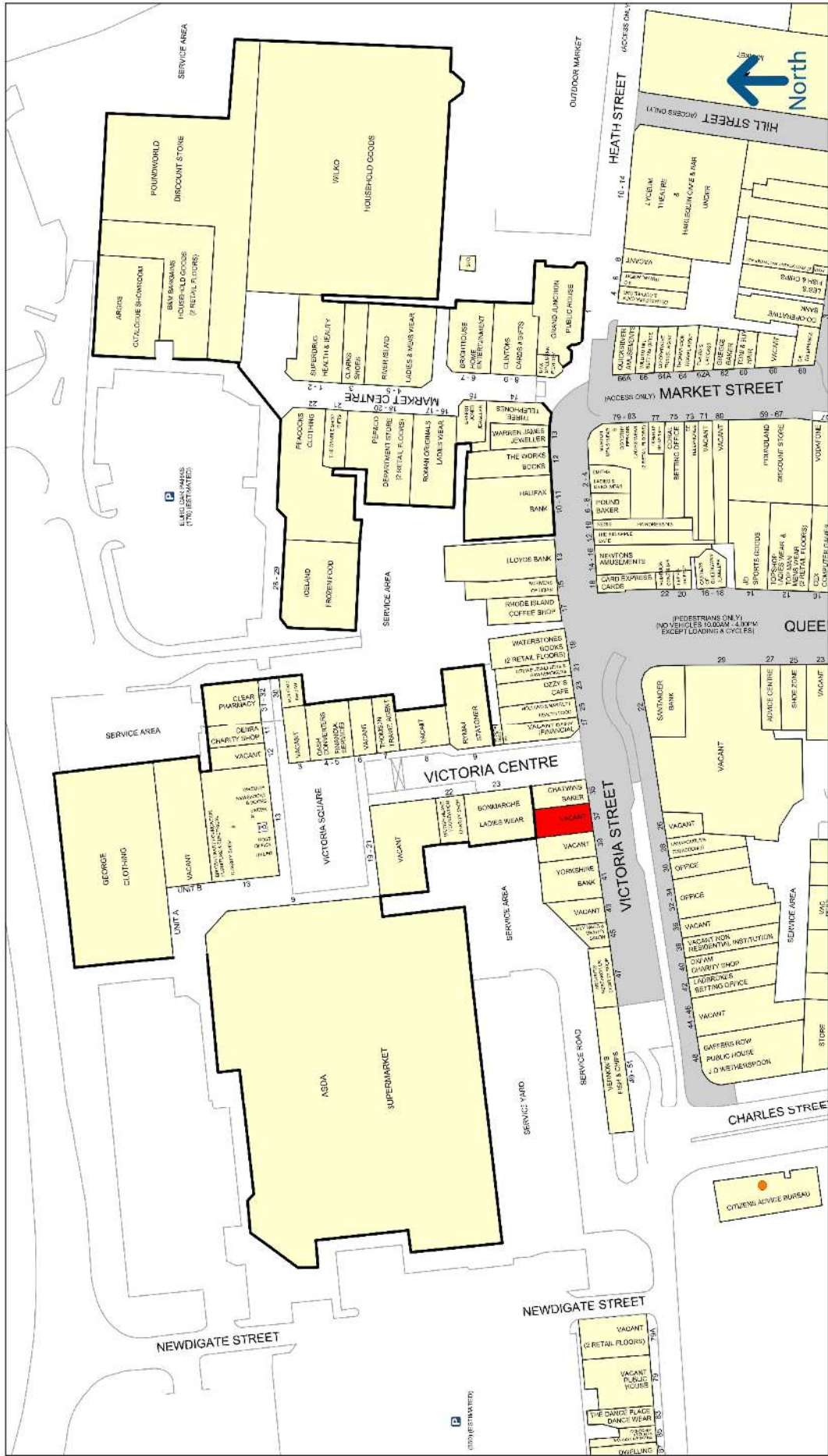
Nick Ferris

t: +44 (0)113 235 5219

e: nick.ferris@eu.jll.com



Crewe



Experian Goad Plan Created: 11/07/2017
Created By: Jones Lang LaSalle Ltd

For more information on our products and services:
www.experian.co.uk/goad | goad.sales@uk.experian.com | 0845 601 6011

Copyright and confidentiality Experian, 2017. © Crown copyright and database rights 2017. OS 100019885

50 metres

