

Plan

Wrightmans

Land Registry Compliant Plans

Winsor & Newton Building

Whitefriars Avenue, Harrow, Middlesex HA3 5RN

DX 80408 WEALDSTONE

t: 0844 800 1228

info@wrightmansplans.co.uk - www.wrightmansplans.co.uk

DRAWING NUMBER

WP7355

REV

01

SIZE

A3

Additional copies of these Plans are available on request.
We do not recommend submitting anything other than our original plans to the Land Registry as most reproductions will be rejected due to distortion and scaling inaccuracy.

DRAWING TITLE

Plan for commercial premises at

Unit 10

Edge Business Centre, Humber Road

London NW2 6EW

SCALE

1:100

1:1250

DATE

09/10/2020

DRAWN BY

B.K.

APPROVED

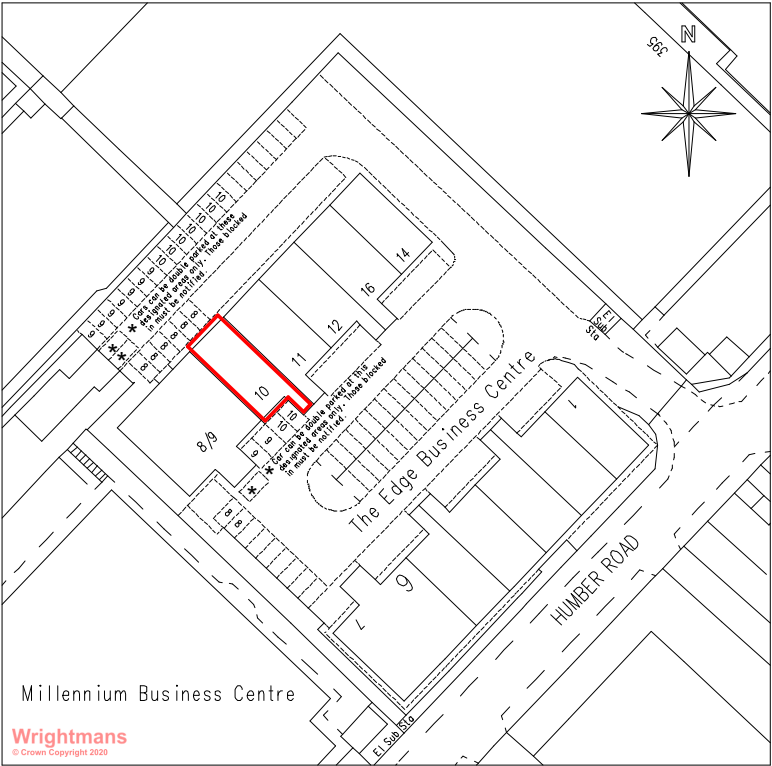
E.G.

Net Internal Area

Ground Floor	Sq M	Sq ft
1. Kitchen Area	31.1	334.8
2. Storage Warehouse	40.2	432.9
3. Machine Room	5.0	53.3
4. Disabled WC	2.1	22.2
5. Cloakroom	5.4	58.56
6. Warehouse Area	13.9	149.9
7. Entrance & Stairwell	9.1	97.6
8. Corridor	21.9	235.8
9. Storage Cupboard	1.1	11.5
10. Under stair Storage Cupboard	2.0	21.1

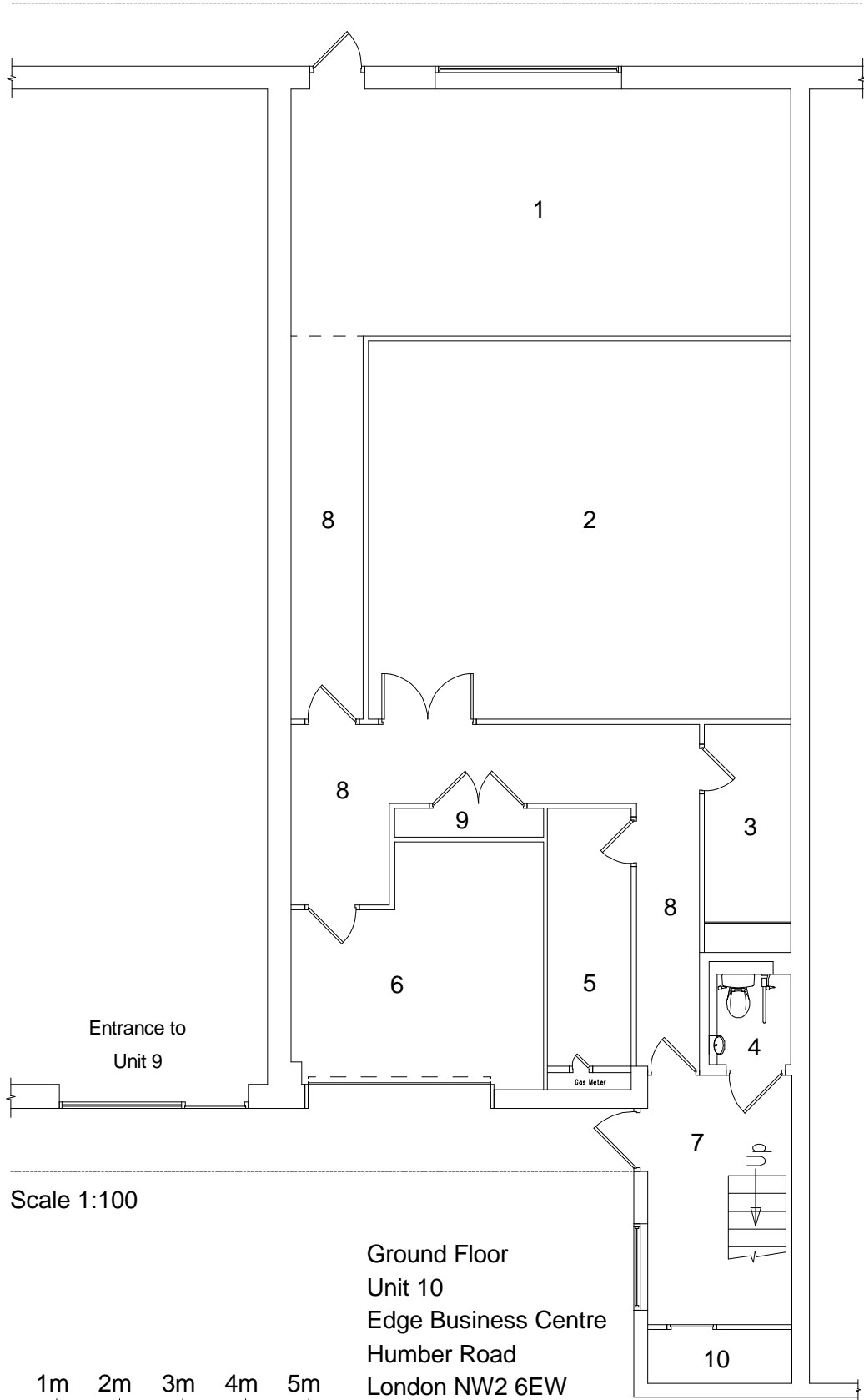
Net Internal Area

First Floor	Sq M	Sq ft
1. Stairwell	2.5	27.0
2. Male WC	4.8	52.1
3. Server Cupboard	3.5	37.2
4. Office	12.9	139.2
5. Office	15.7	169.5
6. Office	19.2	206.7
7. Open Plan Office	58.1	624.9
8. Office	21.8	234.7

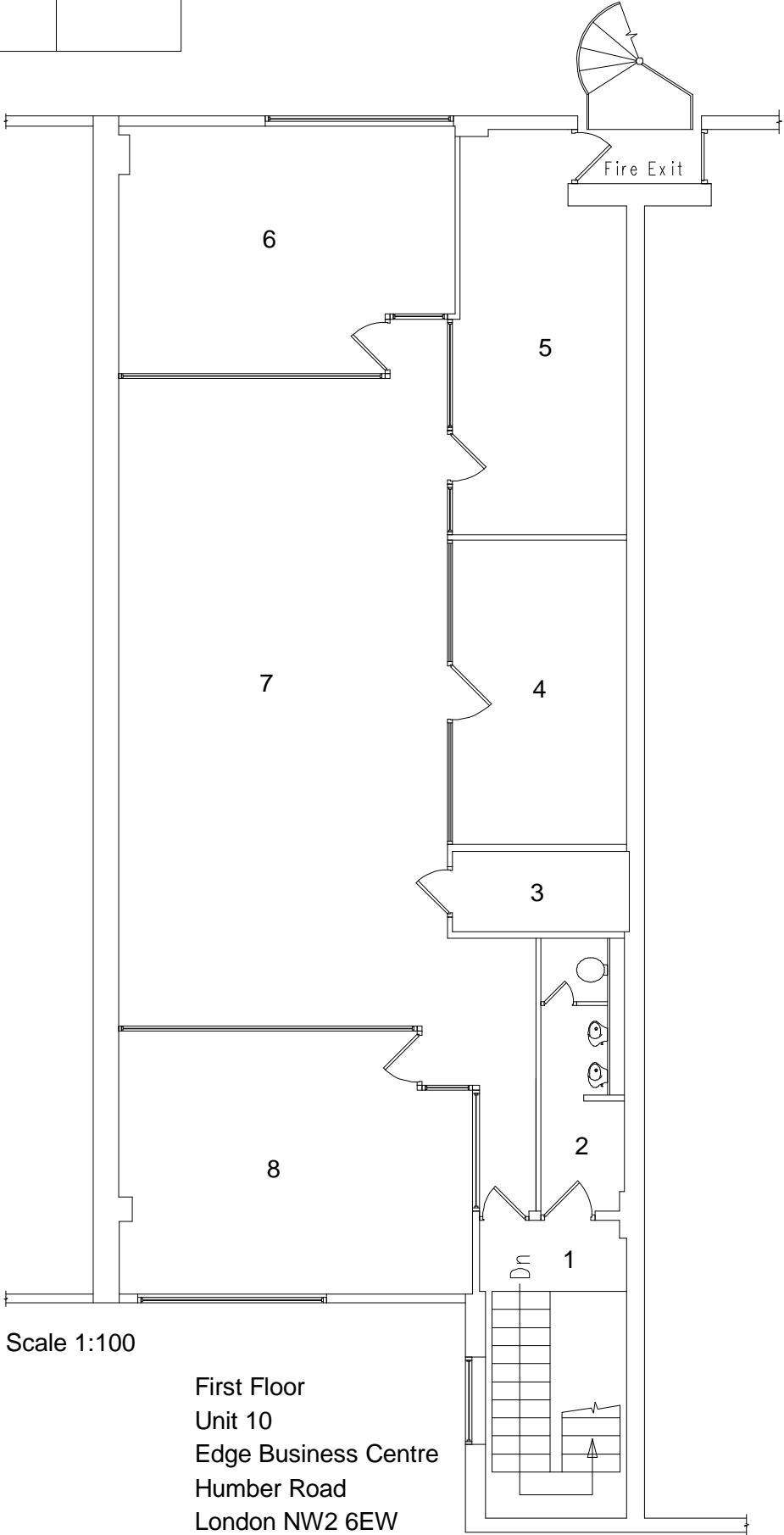


Scale 1:1250

Location Plan



Ground Floor
Unit 10
Edge Business Centre
Humber Road
London NW2 6EW



First Floor
Unit 10
Edge Business Centre
Humber Road
London NW2 6EW