

199 Finchley Road

London NW3 6NN



Flexible space on first floor in iconic London building
8,321 sq ft

WAITROSE
& PARTNERS

A thriving destination

199, Finchley Road is an imposing building located in a prominent position in one of London's most affluent suburbs.

Formerly the iconic John Barnes department store, it is now home to a large Waitrose with 5 floors of apartments above.

The area is known for its intellectual, liberal, artistic, musical and literary associations. With adjoining neighbourhoods including Hampstead Village, St John's Wood & Belsize Park, the location targets an AB demographic.



The area hosts some of the most expensive homes in London



199, FINCHLEY ROAD, LONDON



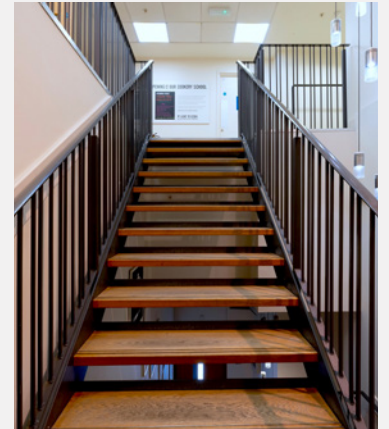
Well-connected

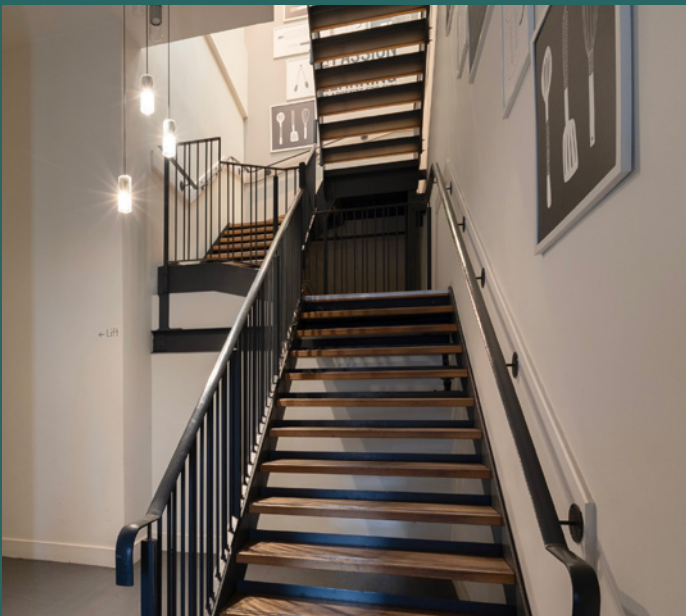


- Finchley Road underground station is on the doorstep, providing Jubilee and Metropolitan line services across London with direct trains to Bond Street, Westminster, Waterloo and London Bridge.
- There are numerous bus routes, and overground train services from West Hampstead to Euston taking less than 10 minutes.
- The key arterial North Circular A406 is less than 3 miles away, and Oxford Circus is 4.5 miles.



Natural light
floods the first
floor space





Entrances to the first floor are at the front on Finchley Road and to the side on Goldhurst road

Location



Space

1st Floor, Waitrose

Entrance on
Finchley Road



Entrance on
Goldhurst Terrace



NEWMARK

Peter Schaverien
020 7462 8711
07825 827 992
peter.schaverien@nmrk.com

Dulcie Hopkinson-Woolley
020 7462 9137
07742 883 775
dulcie.hopkinson-woolley@nmrk.com

No warranty or representation, express or implied, is made to the accuracy or completeness of the information contained herein, and same is submitted subject to errors, omissions, change of price, rental or other conditions, withdrawal without notice, and to any special listing conditions imposed by the property owner(s). As applicable, we make no representation as to the condition of the property (or properties) in question. January 2026.