

**fisher  
german**

# 11 Westferry Circus

Leasehold | Offices

Canary Wharf, E14 4HD

2,977 - 30,478 Sq.ft (276.5 - 2,830.5 Sq.m)



**To Let** | £35.00 - £45.00 psf pa



## Key information



**Rent**  
£35.00 - £45.00  
(per sq ft pa excl.)



**Service charge**  
£17.77  
(per sq ft pa excl.)



**Business Rates**  
Est. £17.23  
(per sq ft pa)



**EPC rating**  
B

## 11 Westferry Circus

2,977 - 30,478 Sq.ft (276.5 - 2,830.5 Sq.m)

### Description

Westferry House is a landmark 140,000 sq ft office building occupying a prominent corner position at the western gateway to Canary Wharf, one of Europe's most prestigious business districts. Designed by award-winning architects Scott Brownrigg, the building combines Grade A office space with modern design and a prime riverside location.

- The 8<sup>th</sup> floor features a fitted layout with a private terrace overlooking the River Thames
- The 1st floor units will be available fitted and furnished from April 2026.
- Secure underground parking is available to tenants
- The landlord is open to delivering tailored fit outs and furnishings to meet occupier needs, subject to commitment.

## Amenities



Managed Reception



Raised Floor Access



Shower & Bike Storage



75 Parking spaces



Private Terrace



Live Internet Connectivity - No Wayleave

## Further information

### Lease Terms

A new Lease is available direct from the Landlord.

### Rent

9th Floor - £45.00 per sq ft

8th Floor - £35.00 per sq ft

1st Floor - £35.00 per sq ft

### Business Rates

£17.23 per sq ft pa.

### Service Charge

£17.77 per sq ft

### Estate Charge

£4.39 per sq ft

### EPC

The EPC rating is B.

### VAT

The property is elected for VAT which is therefore payable on rent and service charge.

### Viewings

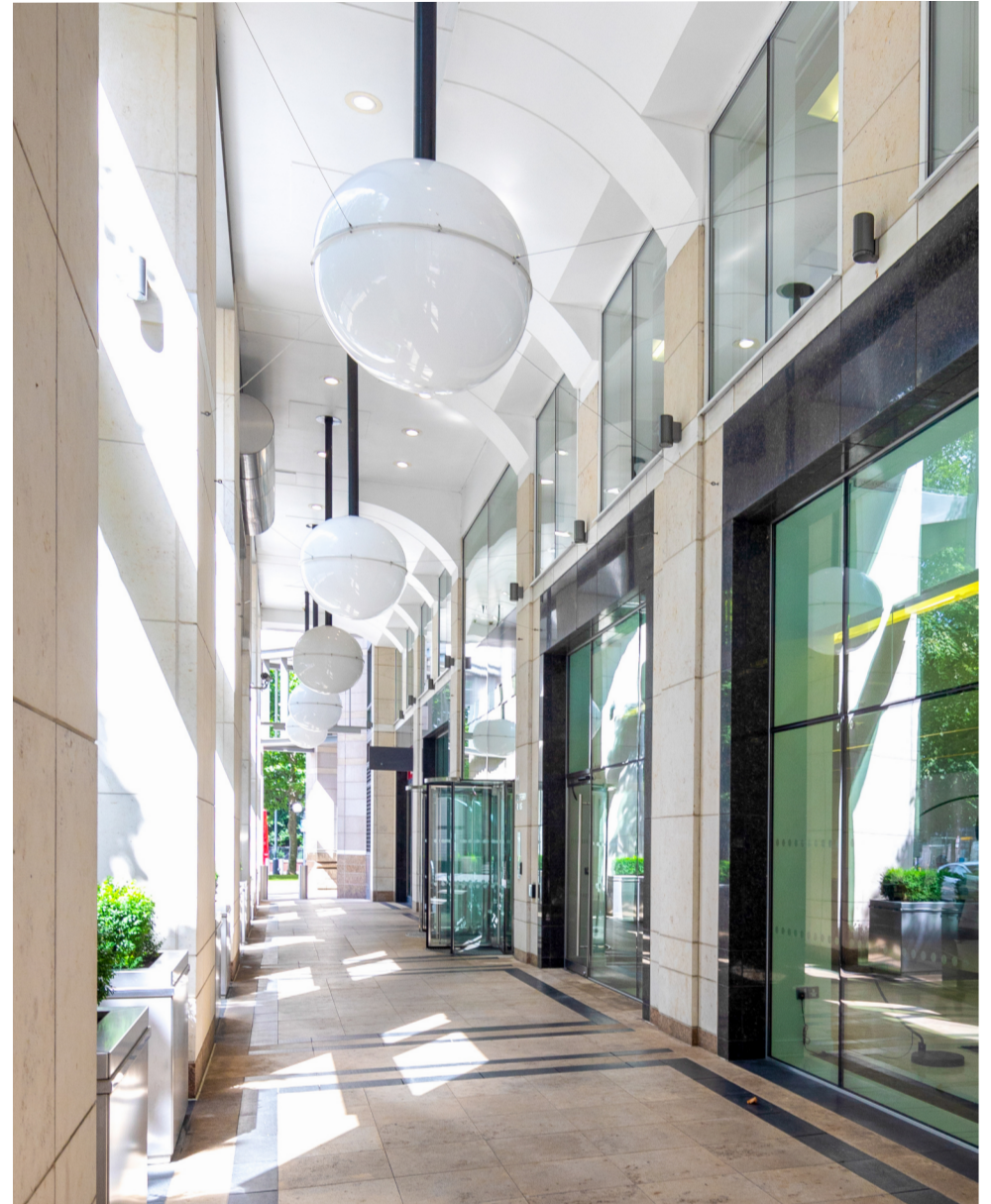
Strictly by prior arrangement with the joint agents Fisher German and BNP Paribas Real Estate.

## Accommodation

The approximate Net Internal Areas comprise:

Floor	Sq.ft	Sq.m
Ninth Floor (Private Terrace)	2,977	276.5
Eighth Floor (Private Terrace)	14,486	1,345
First Floor West (Under Offer)	7,100	660
First Floor East	5,915	549
<b>TOTAL</b>	<b>30,478</b>	<b>2,830.5</b>







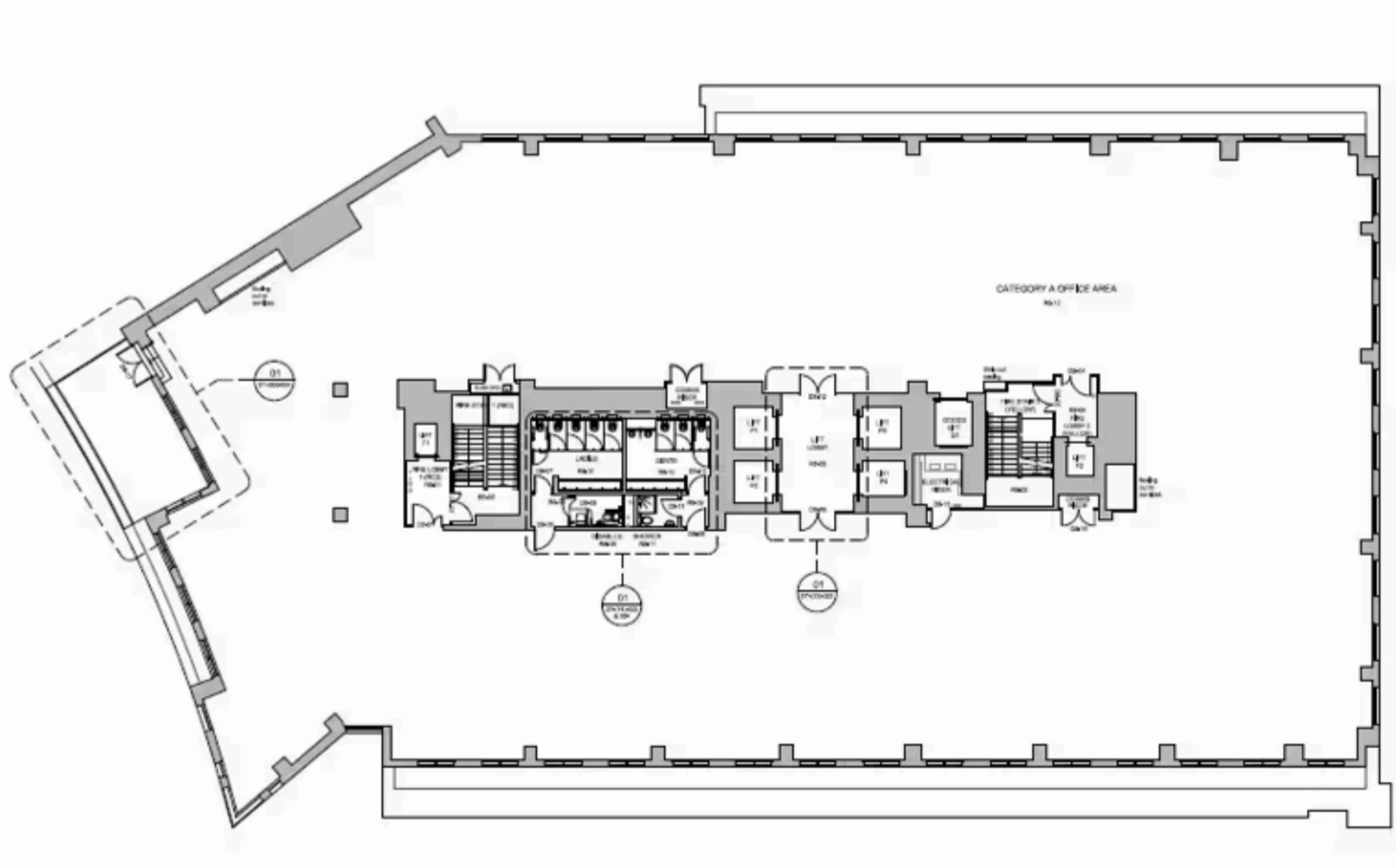
9<sup>th</sup> Floor Terrace



# 9th Floor Layout

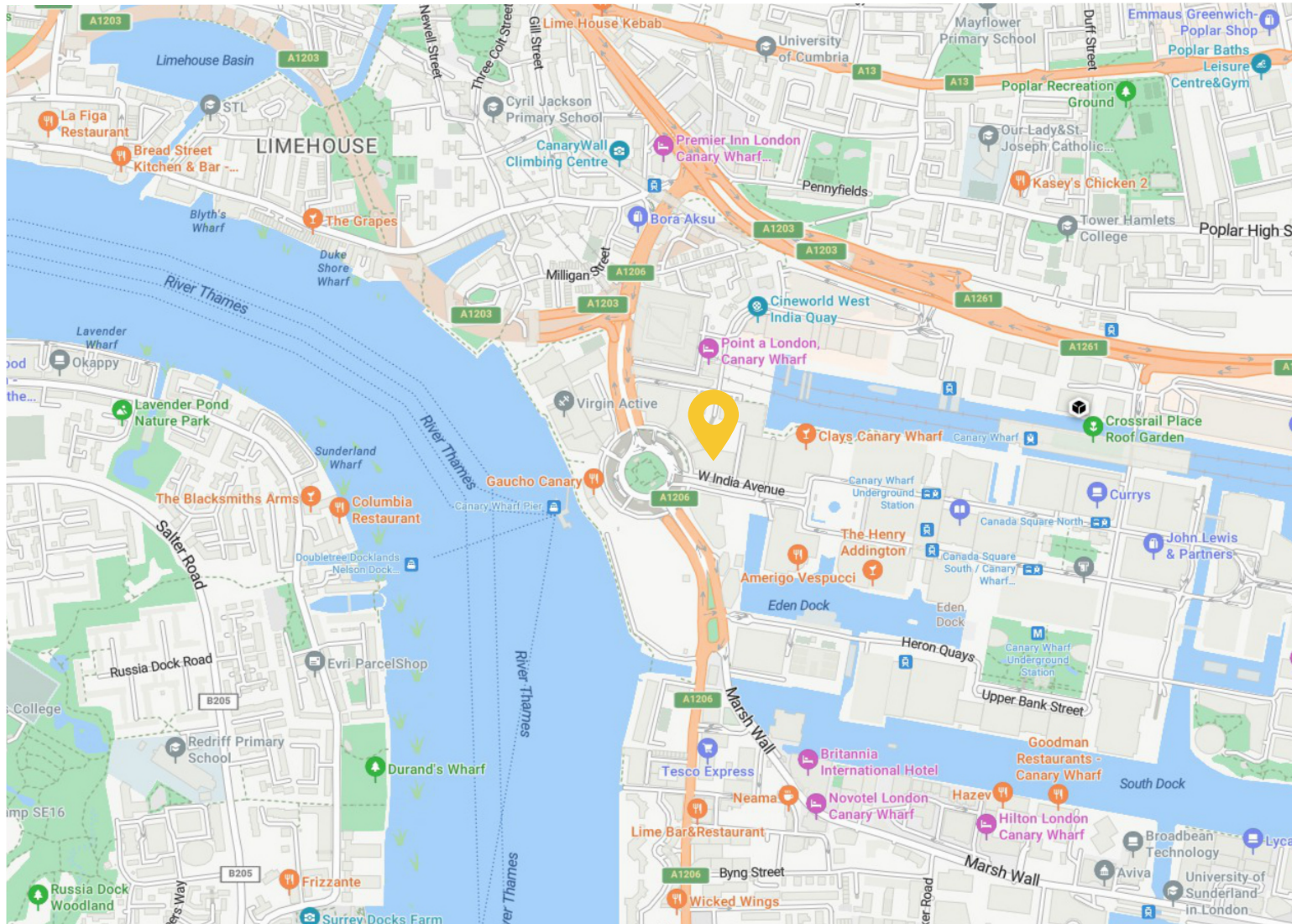


## 8th Floor Layout





## Location Map



### Location

Address: 11 Westferry Circus,  
London E14 4HD

What3words: ///trees.gown.double

### Nearest Station

Westferry DLR:

6 min walk

Canary Wharf Jubilee Line &  
Elizabeth Line:

6 min walk

Canary Wharf Pier:

9 min walk

### Nearest Airport

London City Airport: 4 miles

## Contact us



**Ben Stanley**

0207 747 3141

[ben.stanley@fishergerman.co.uk](mailto:ben.stanley@fishergerman.co.uk)



**Doug Gordon**

0207 747 3117

[doug.gordon@fishergerman.co.uk](mailto:doug.gordon@fishergerman.co.uk)



**Tatiana Wharton**

0203 780 0752

[tatiana.wharton@fishergerman.co.uk](mailto:tatiana.wharton@fishergerman.co.uk)



Or our joint agents: BNP Paribas Real Estate

**Ben Rainbow**

[ben.rainbow@realestate.bnpparibas](mailto:ben.rainbow@realestate.bnpparibas)

Please note: Fisher German LLP and its Joint Agents give notice that: 1. They have no authority to make or give any representation or warranty on any property whether on their own behalf or on behalf of their clients or otherwise. 2. They do not owe any duty of care to you and assume no responsibility for any statements, representations, warranties or otherwise made in the particulars and you should not rely on those in the particulars. 3. The particulars are produced in good faith are set out as a general guide only and do not constitute or form an offer or a contract or part thereof. 4. Any photographs, descriptions, plans, measurements, distances and any other details in the particulars are approximate estimates only taken as the property appeared at the time and should not be relied upon as factually accurate. 5. Fisher German assumes prospective purchasers/tenants have carried out inspections to satisfy themselves that the information in the particulars is correct.

Particulars dated May 2026. Photographs dated 2025.



This brochure is fully recyclable