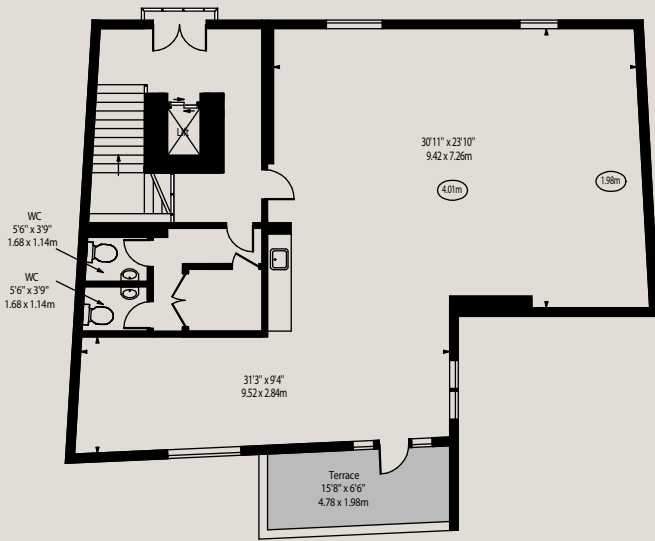


Midford Place, W1T 5BG

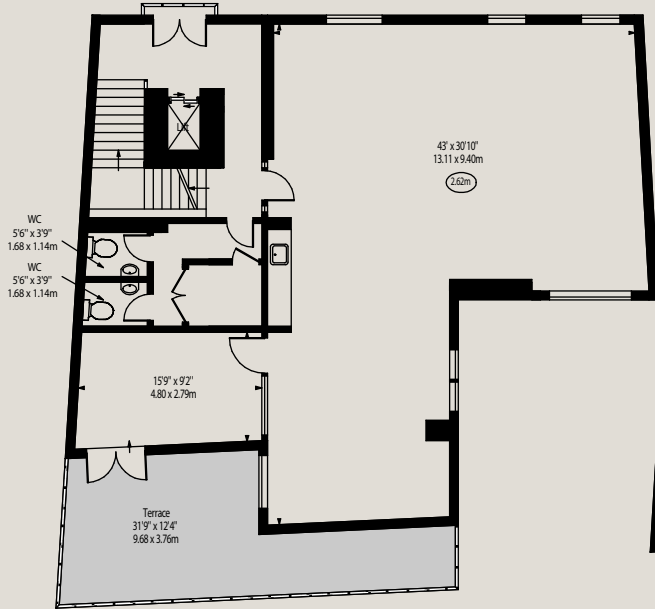
Gross Internal Area 8856 sq. feet (822.72 sq. metres)
Net Internal Area 6556 sq. feet (609.05 sq. metres)



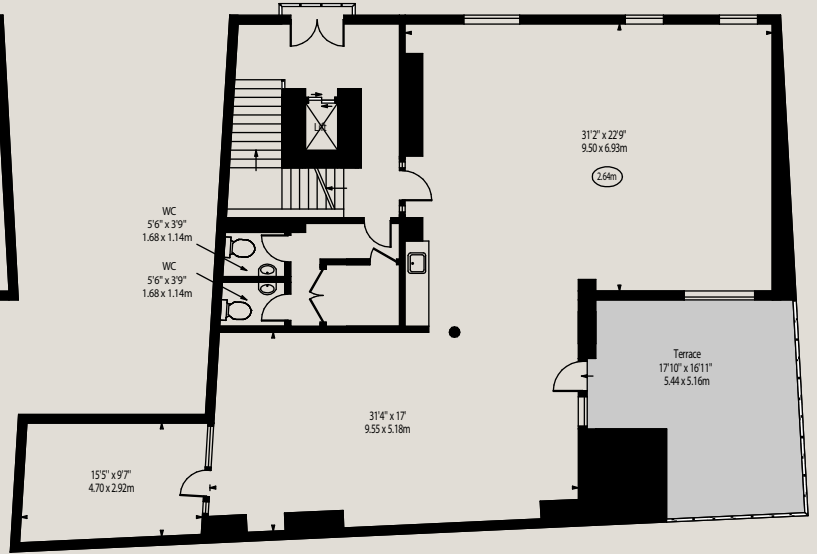
○ Ceiling Height



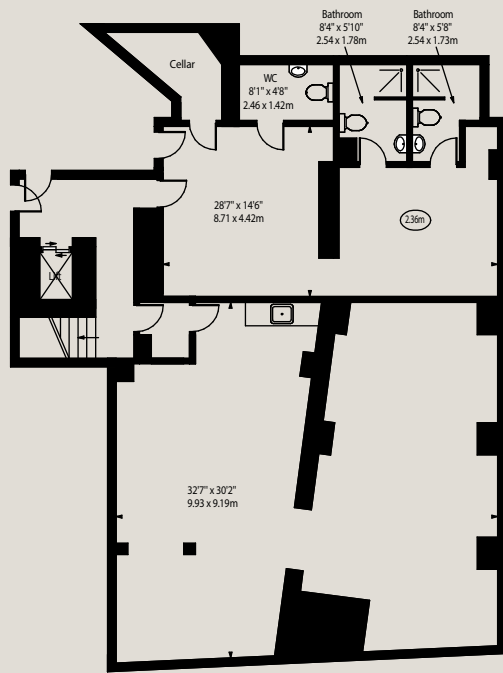
Third Floor



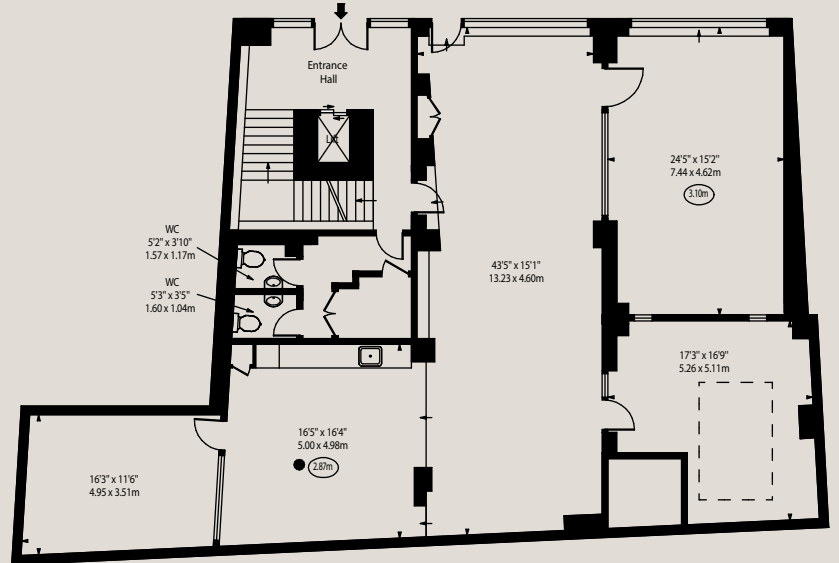
Second Floor



First Floor



Lower Ground Floor



Ground Floor

Every attempt has been made to ensure the accuracy of the floor plan shown. However, all measurements, fixtures, fittings, and data shown are approximate interpretations and for illustrative purposes only. Measured according to the RICS. Not To Scale.
www.goldilocks.co.uk
Ref. No. 029497E