

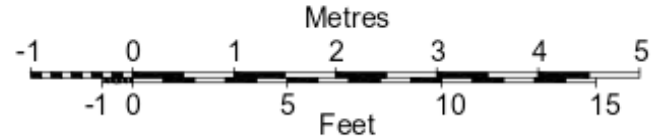
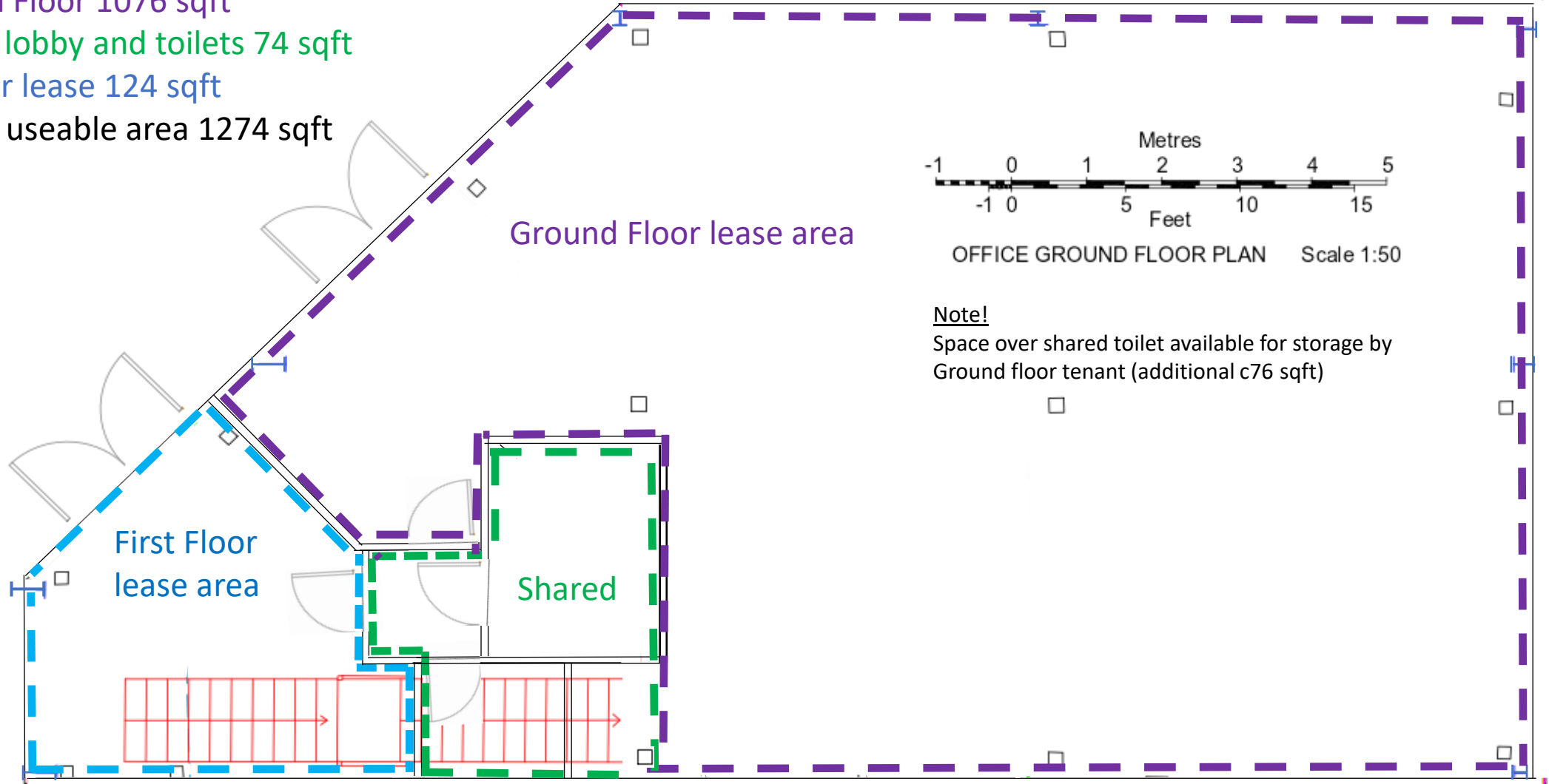
1a Broadfields Court, Aylesbury

Ground Floor 1076 sqft

Shared lobby and toilets 74 sqft

1st Floor lease 124 sqft

Overall useable area 1274 sqft



OFFICE GROUND FLOOR PLAN Scale 1:50

Note!
Space over shared toilet available for storage by Ground floor tenant (additional c76 sqft)