

LETTICE STREET, SW6

Approximate Net Internal Area of Tenancy 1: 88 Sq. metres
947 Sq. feet

Approximate Net Internal Area of Tenancy 2: 67 Sq. metres
721 Sq. feet

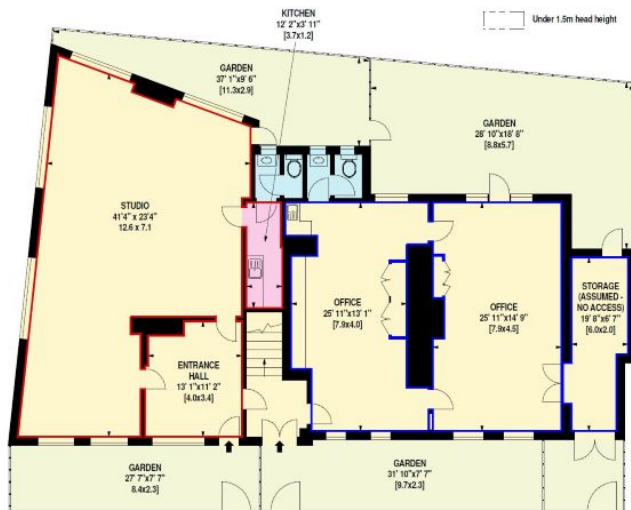
Approximate Net Internal Area of Tenancy 3: 87 Sq. metres
937 Sq. feet

Approximate Net Internal Area of Tenancy 4: 70 Sq. metres
754 Sq. feet

Excluding Storage Area of Approximately: 11 Sq. metres
118 Sq. feet

Excluding Mezzanine Area of Approximately: 12 Sq. metres
129 Sq. feet

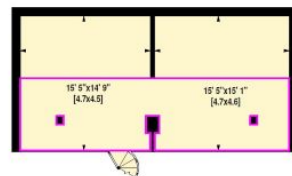
Excluding Mezzanine Area of Approximately: 23 Sq. metres
248 Sq. feet



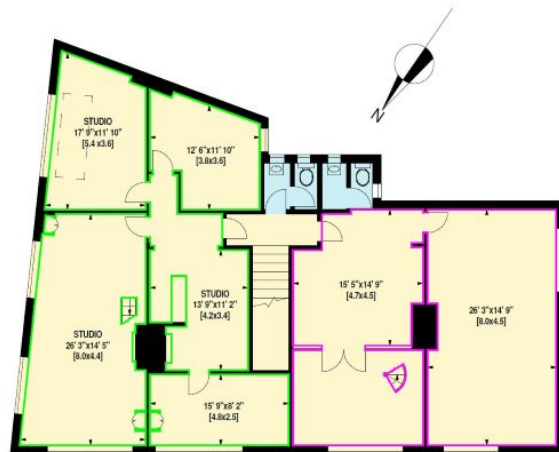
GROUND FLOOR



MEZZANINE



MEZZANINE



FIRST FLOOR