

12a Charterhouse Square EC1

Characterful self-contained building
overlooking Charterhouse Square





Character & style

12A Charterhouse Square is a Grade II listed building providing 3,233 sq ft of self-contained office space. Behind its historic façade, the property is undergoing a full refurbishment to the highest standard, carefully preserving its distinctive period character. The offices are bright and airy, benefiting from abundant natural light and views over the picturesque Charterhouse Square. The finished space will feature kitchenettes, breakout areas, new LED lighting, high-speed fibre connectivity and dedicated meeting rooms.

12a Charterhouse Square, EC1



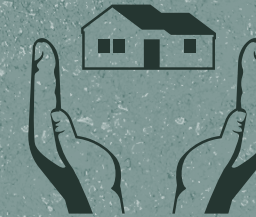


12a Charterhouse Square, EC1

Specification



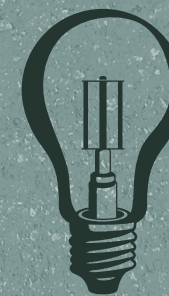
Under refurbishment



Self-contained building



2x Kitchenettes



New LED lighting



Fibre connected



G & LG meeting room
and breakout area

First floor workspace CGI



	sq ft	sq m
	466	43.3
	586	54.4
	574	53.3
	779	72.4
	828	76.9
Total	3,233	300.3



12a Charterhouse Square, EC1

First floor workspace CGI



Lower Ground WC CGI

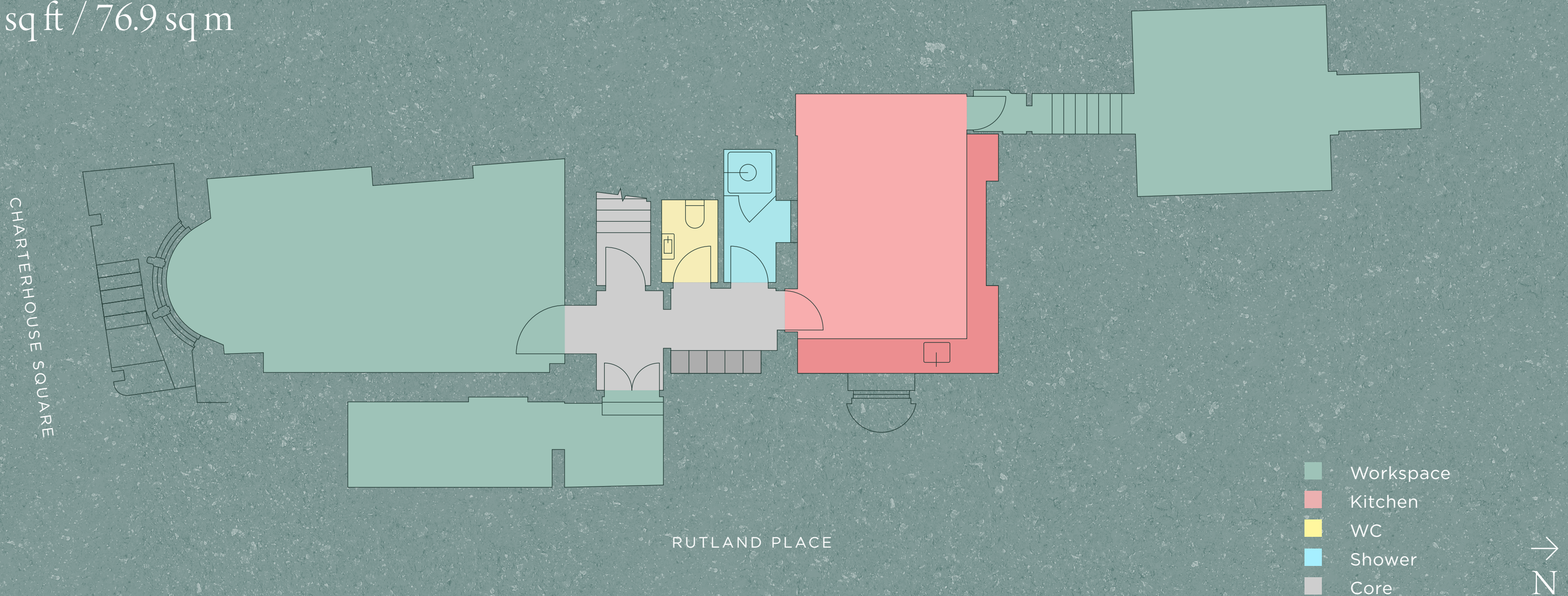
Lower Ground kitchen CGI





Lower Ground floor

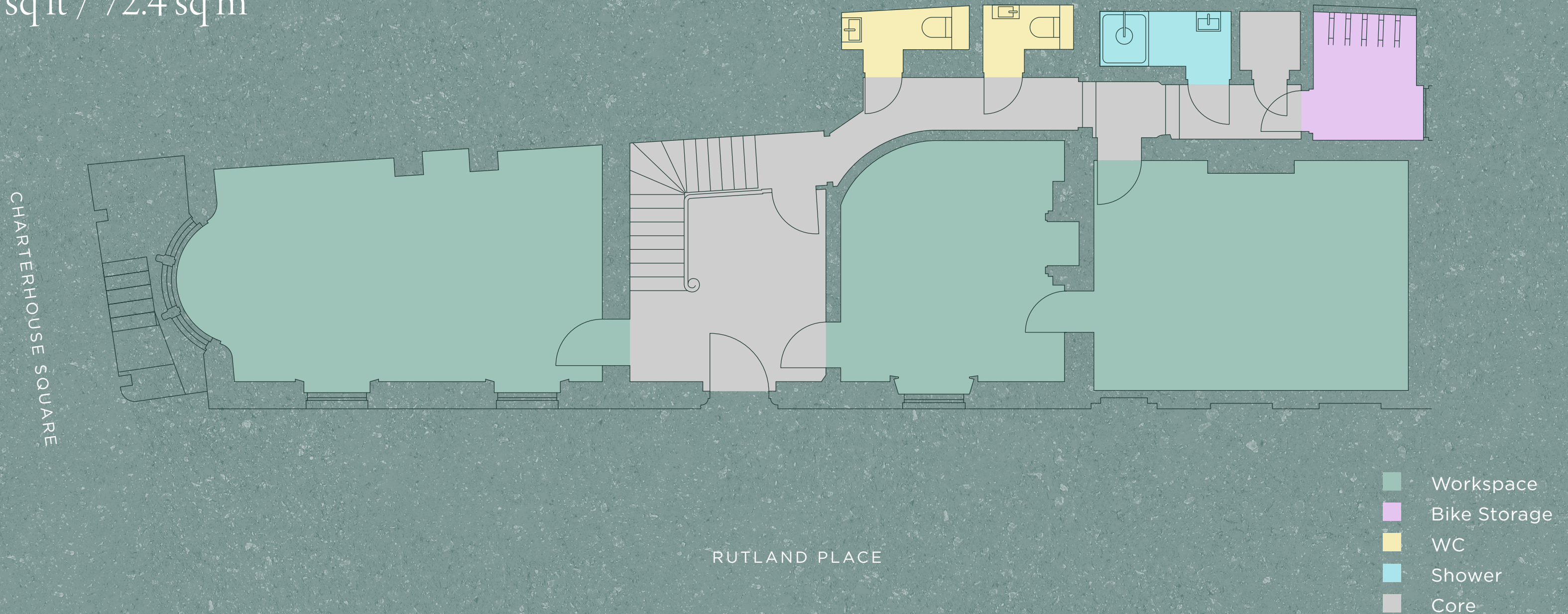
828 sq ft / 76.9 sq m





Ground floor

779 sq ft / 72.4 sq m

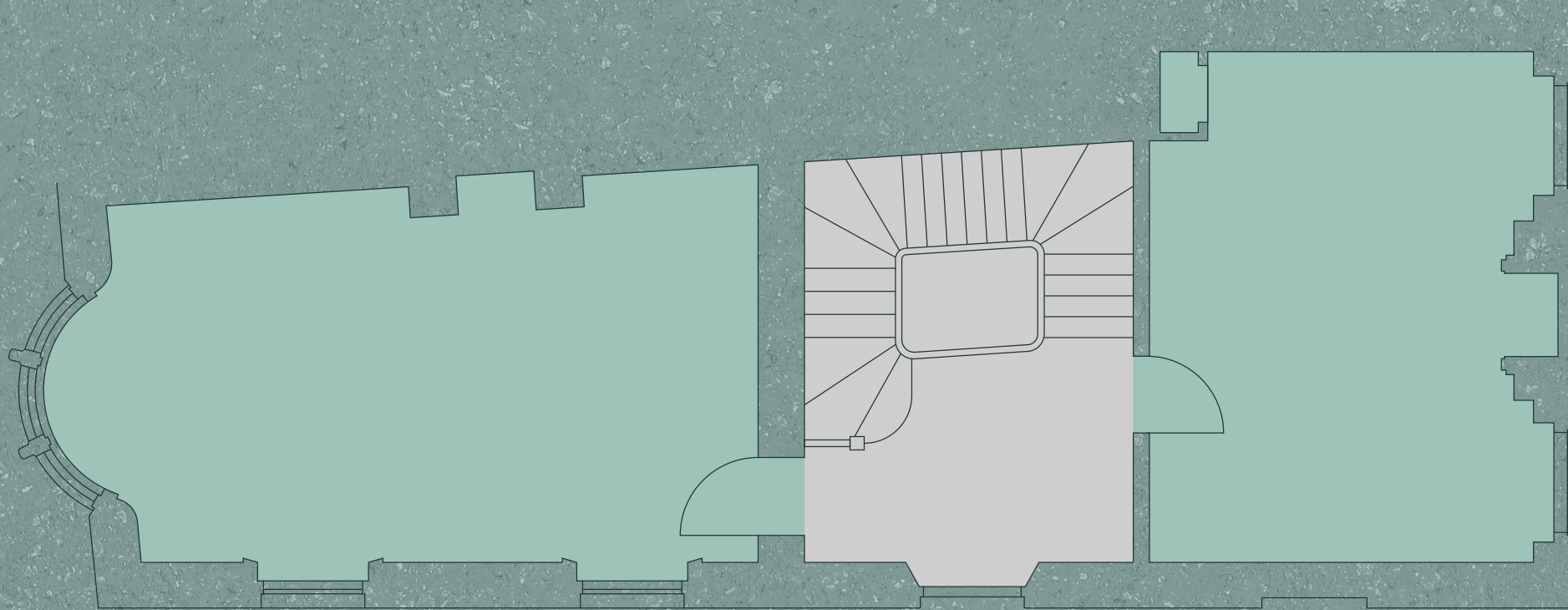




First floor

574 sq ft / 53.3 sq m

CHARTERHOUSE SQUARE



RUTLAND PLACE

Workspace
Core

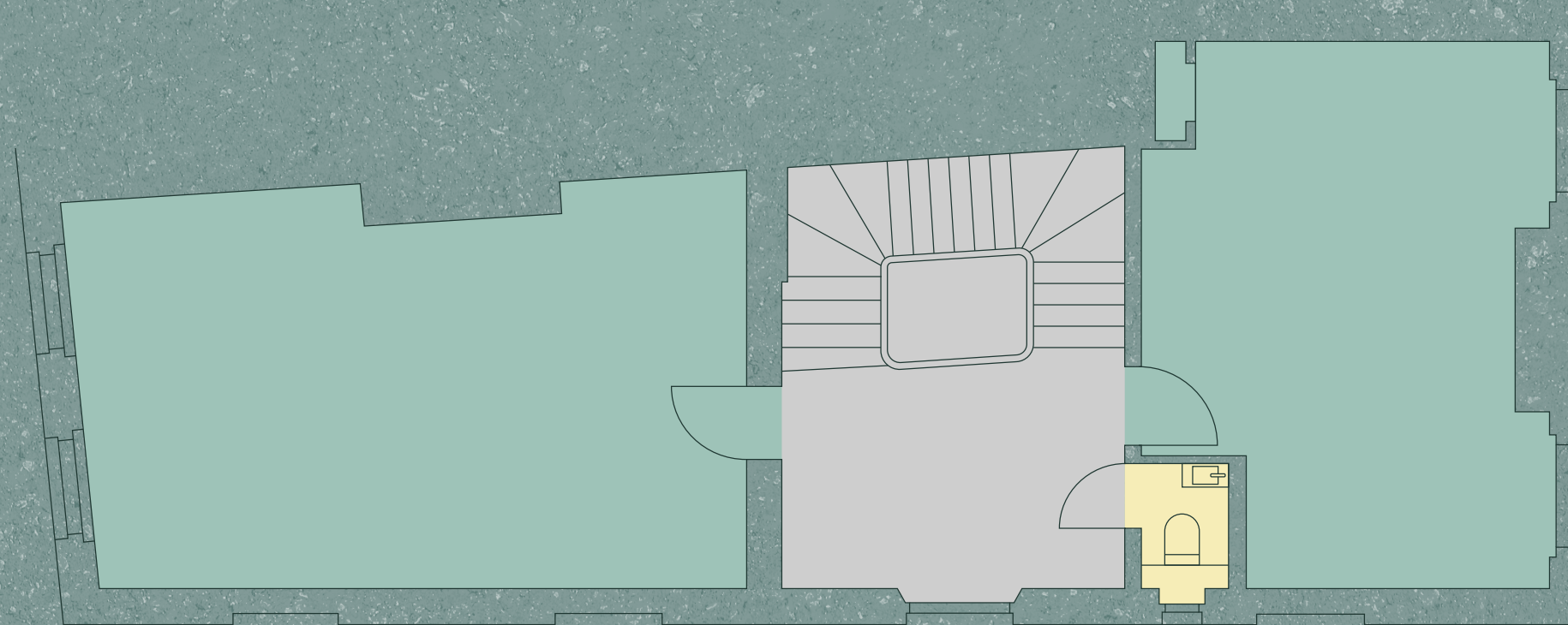




Second floor

586 sq ft / 54.4 sq m

CHARTERHOUSE SQUARE



RUTLAND PLACE

Workspace
WC
Core

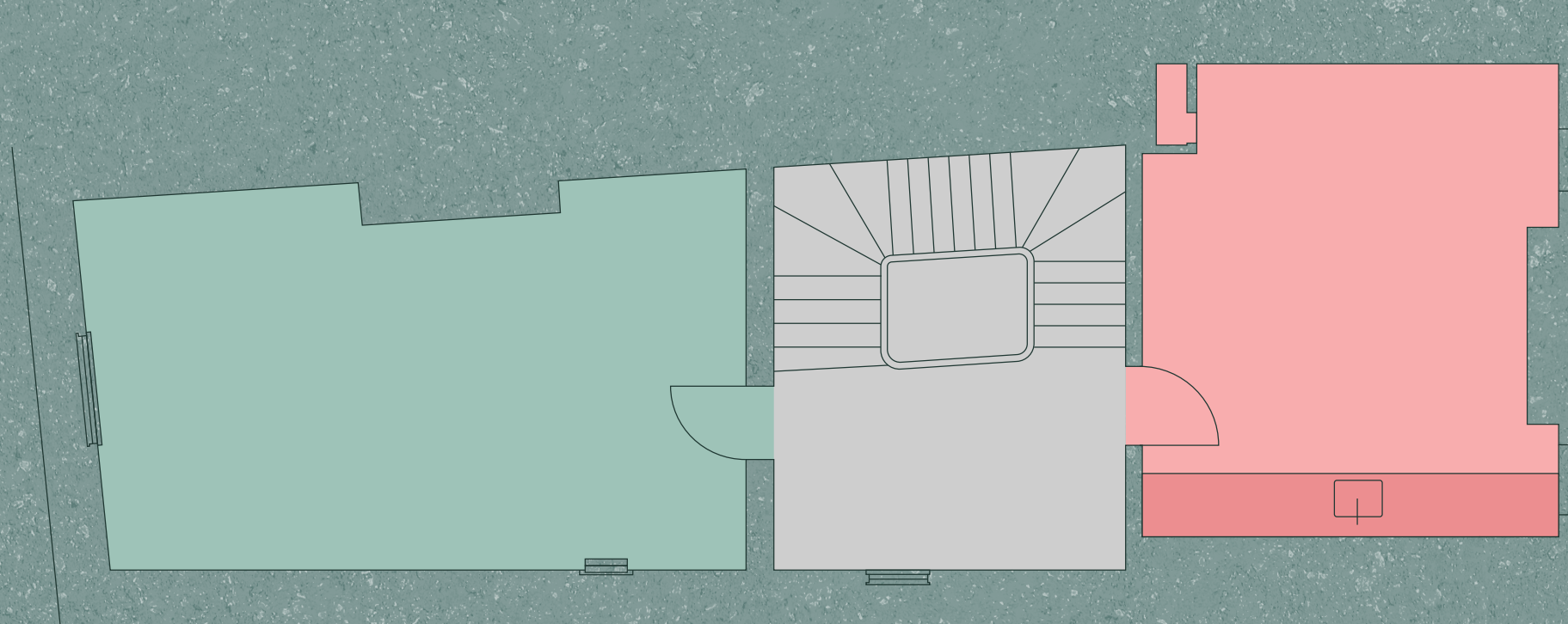




Third floor

466 sq ft / 43.3 sq m

CHARTERHOUSE SQUARE



RUTLAND PLACE

- Workspace
- Kitchen
- Core





Timeless location

12A Charterhouse Square enjoys an enviable location, overlooking the beautiful Charterhouse Square while being just moments from the vibrant Old Street and Barbican areas. It offers the perfect balance between work and lifestyle, surrounded by an abundance of restaurants, cafés, and bars in the lively Farringdon and Clerkenwell neighbourhoods. The building is exceptionally well connected, with Barbican and Farringdon stations both within a five-minute walk and the new Farringdon Elizabeth line entrance is only seconds away.



Charterhouse Square



12a Charterhouse Square, EC1



Barbican Centre





Local Amenitites

Restaurants

- 1. 1920 Bar
- 2. Drip
- 3. Laksa
- 4. Golden Baggers
- 5. Luca
- 6. Dans le Noir ?
- 7. Charles Artisan Bread
- 8. Gusto
- 9. Korean BBQ House
- 10. Côte Barbican
- 11. Vecchio Parioli
- 12. Le Café du Marché
- 13. St. John
- 14. Vinoteca
- 15. Brutto
- 16. Buy & Bite
- 17. Ceru
- 18. Bouchon Racine
- 19. Camino
- 20. Origin City
- 21. Balfour St. Barts
- 22. Apulia
- 23. Alfonsina
- 24. Club Gascon
- 25. Kurumaya
- 26. Mayura
- 27. Barbican Kitchen
- 28. Whitecross Street Market
- 29. Fare
- 30. The Salad Kitchen

Bars

- 1. The Slaughtered Lamb
- 2. Hat & Feathers
- 3. Brewdog
- 4. Clerkenwell & Social
- 5. The Holy Tavern
- 6. The Shakespeare
- 7. The Two Brewers
- 8. The Castle
- 9. Smiths of Smithfield
- 10. Hope Smithfield
- 11. Space Talk
- 12. Fox & Anchor
- 13. The Sutton Arms
- 14. The Hand and Shears
- 15. Martini Bar
- 16. Wood Street Bar

Hotels

- 1. The Zetter
- 2. Malmaison London

Cafés

- 1. Roni's Cafe
- 2. Bench Café
- 3. Paul's
- 4. h.o.m.e

Gyms

- 1. Crossfit Farringdon
- 2. Nuffield Health





the Charterhouse



Malcolm Trice

07791 049 792

m.trice@inglebytrice.co.uk

Jonty Robinson

07748 654 997

j.robinson@inglebytrice.co.uk

Important notice relating to the Misrepresentation Act 1967 and the Property Misdescriptions Act 1991: (i) the particulars are set out as a general outline only for guidance of intending purchasers or lessees and do not constitute, nor constitute part of, an offer or contract. (ii) all descriptions, dimensions, references to condition and necessary permission for use and occupation, and other details are given in good faith and are believed to be correct, but any intending purchasers or occupiers should not rely on them as statements or representations of fact, but must satisfy themselves by inspection or otherwise as to the correctness of each of them. November 2025

Marketing: [Stuart Chapman Design](#)

