

**fisher  
german**

# 66 Prescott Street

Leasehold | Offices

London, E1 8HG

9,364 - 110,833 Sq.ft (870 - 10,297 Sq.m)



**To Let** | From £32.50 - £47.50 psf pa excl.





## 66 Prescott Street

9,364 - 110,833 Sq.ft (870 - 10,297 Sq.m)

### Description

A large office building comprised of Lower Ground, Ground and seven upper floors, offering large open plan / fitted floors. The upper floors benefit from wrap around terraces. All floors benefit from views of the atrium running from the seventh floor to the Lower Ground Floor. The entrance comprises a refurbished lounge and manned reception.

### Location

The building is on the corner of Prescott Street and St Mark Street. The street has undergone a transformation in the last 5 years with a range of new hotels, high class residential and office developments. The building benefits from good transport links with Aldgate and Aldgate East Underground Stations circa 300m to the north and Tower Hill 300m to the south west.

### Key information



#### Rent

From £32.50-£47.50  
(per sq ft pa excl.)



#### Business Rates

£23.49 (per sq ft (ye  
April 2026))



#### Service Charge

£10.00  
(per sq ft pa excl.)



#### EPC rating

D

### Amenities



Air Con



Recessed  
Floors



Suspended  
Ceiling



LED  
Lighting



End of  
Journey  
Facilities



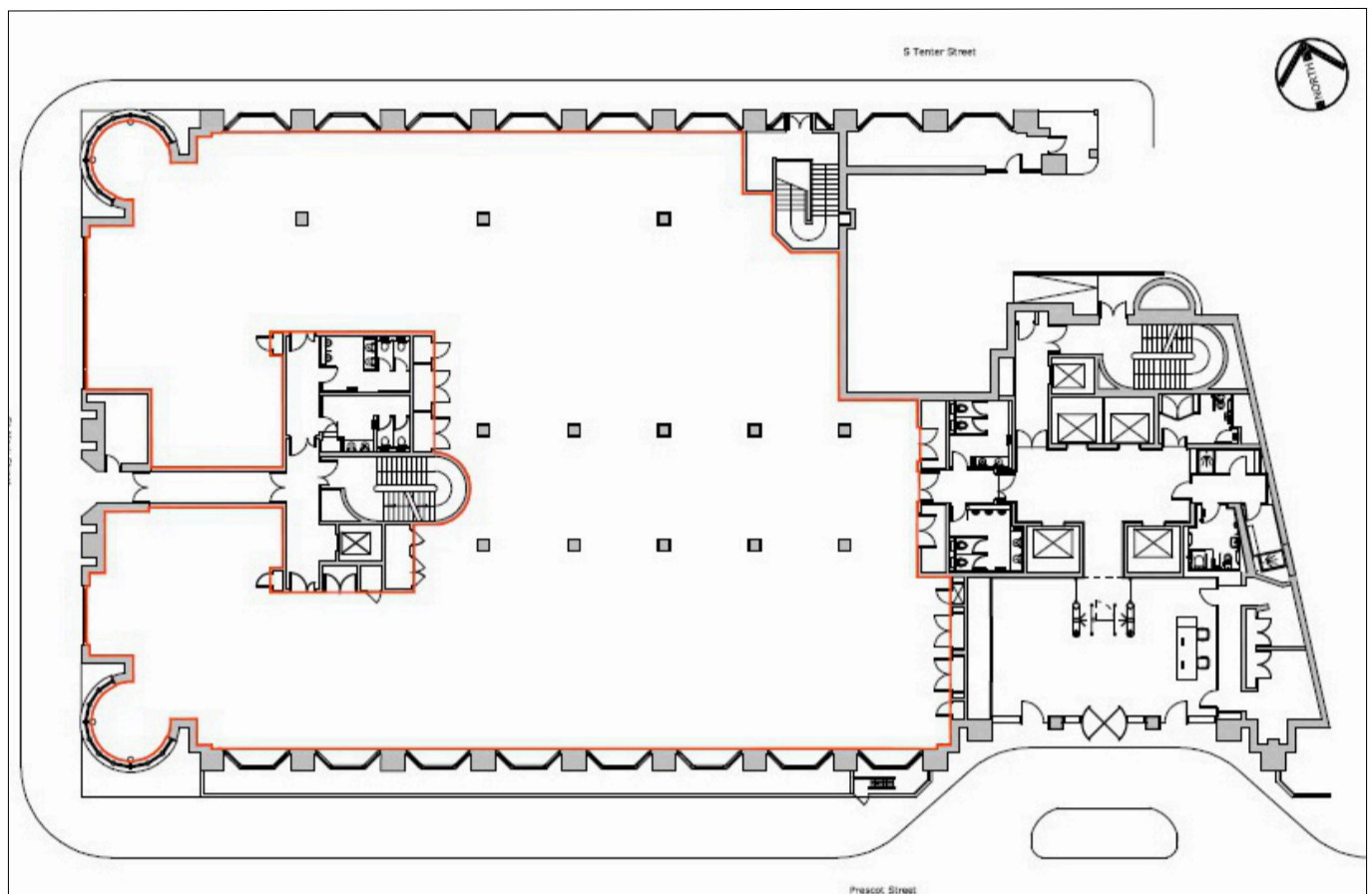
24 Hour  
Access

## Accommodation

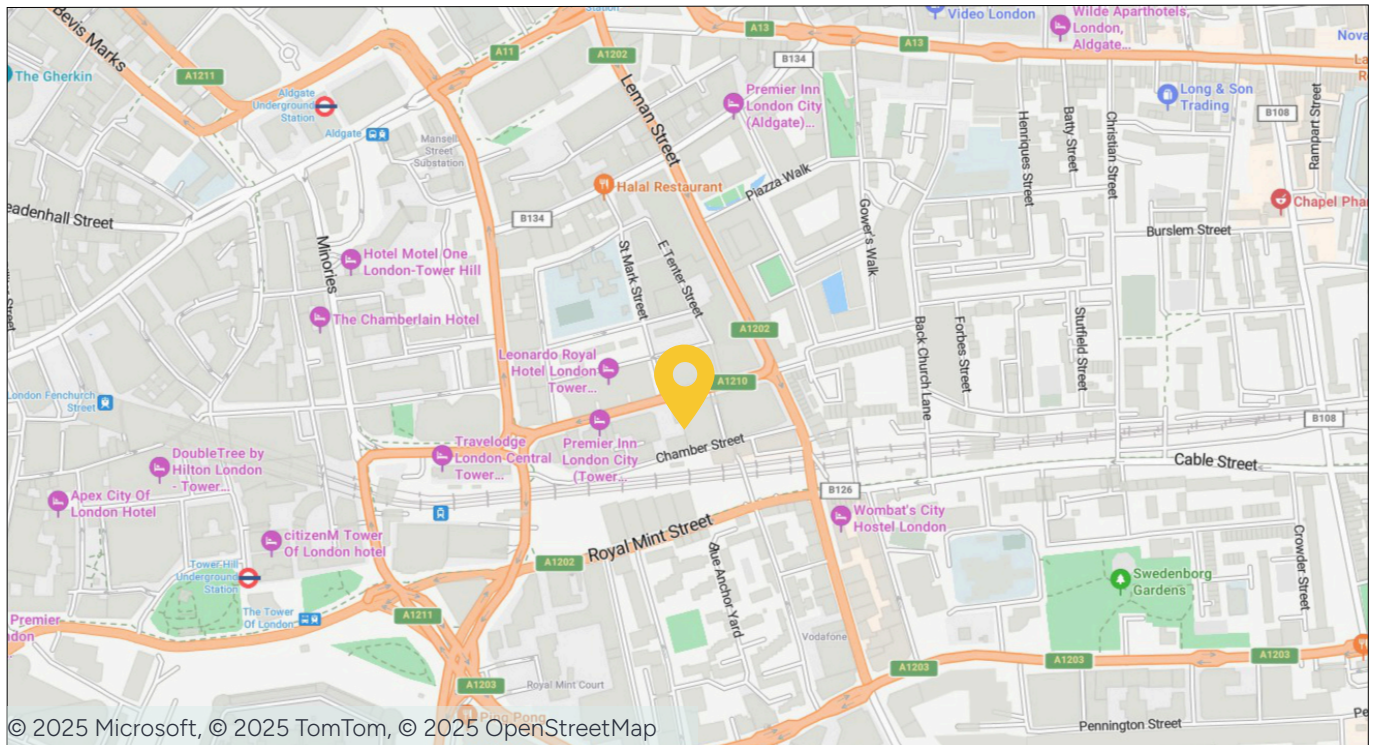
Floor	Sq.ft	Sq.m
Seventh	9,364	870
Sixth	11,851	1,101
Fifth	13,745	1,277
Fourth	12,788	1,188
Third	13,853	1,287
Second	13,088	1,216
First	12,486	1,160
Ground	11,366	1,056
Lower Ground	12,292	1,142
Total	110,833	10,297



## Floorplan



## Location Map



## Further Information

### Lease Terms

A new flexible lease is available from the Landlord for a term by arrangement.

### Rent

From £32.50 to £47.50 per sq ft pa excl.

### Business Rates

Estimated at £23.49 per sq ft for the rating year April 2025 to April 2026. All parties are advised to make their own enquiries with the rating authority.

### Service Charge

The current on account budget is £10.00 per sq ft pa excl.

### Legal Costs

Each party to be responsible for their own legal costs incurred in this transaction.

### EPC

The EPC rating is D.

### VAT

The property is elected to VAT which is therefore payable on rent and service charge.

### Viewings

Viewings strictly by arrangement through sole agents Fisher German LLP and Newton Perkins.

### Nearest Station

Aldgate East Underground Station: 6 min walk

Tower Hill Underground Station: 7 min walk

Aldgate Underground Station: 8 min walk

Fenchurch Street Commuter Rail: 8 min walk



## Contact us



**Doug Gordon**  
020 7367 5530  
[doug.gordon@fishergerman.co.uk](mailto:doug.gordon@fishergerman.co.uk)



**Jessie High**  
0207 747 3142  
[jessie.high@fishergerman.co.uk](mailto:jessie.high@fishergerman.co.uk)



Or our joint agents: Newton Perkins  
**Leo Gough**  
020 7456 0727

Please note: Fisher German LLP and its Joint Agents give notice that: 1. They have no authority to make or give any representation or warranty on any property whether on their own behalf or on behalf of their clients or otherwise. 2. They do not owe any duty of care to you and assume no responsibility for any statements, representations, warranties or otherwise made in the particulars and you should not rely on those in the particulars. 3. The particulars are produced in good faith are set out as a general guide only and do not constitute or form an offer or a contract or part thereof. 4. Any photographs, descriptions, plans, measurements, distances and any other details in the particulars are approximate estimates only taken as the property appeared at the time and should not be relied upon as factually accurate. 5. Fisher German assumes prospective purchasers/tenants have carried out inspections to satisfy themselves that the information in the particulars is correct.

Particulars dated October 2025. Photographs dated June 2024.



This brochure is fully recyclable

[fishergerman.co.uk](https://fishergerman.co.uk)