



INDIGO
— PLACE —

A NEW BENCHMARK FOR WORKSPACE IN BRENTWOOD

**Indigo Place brings a new calibre of office space
to Brentwood - designed for businesses that
expect more from where they work**

INDIGO PLACE | 171 KINGS ROAD | BRENTWOOD | CM14 4EJ



A fully reimagined, Grade A workspace, delivering a modern specification, well-proportioned floorplates and a professional setting that reflects the ambition of the companies within it.

Whether establishing a new base or upgrading from existing space, Indigo Place offers a work environment that supports productivity, presents well to clients, and feels considered in every detail.



Strong natural light across all floors



EPC rating 'A'



New HVAC & Air Handling Systems



Contemporary LED lighting throughout



Generous onsite parking provision across surface and underground levels



Modern passenger lifts serving all levels



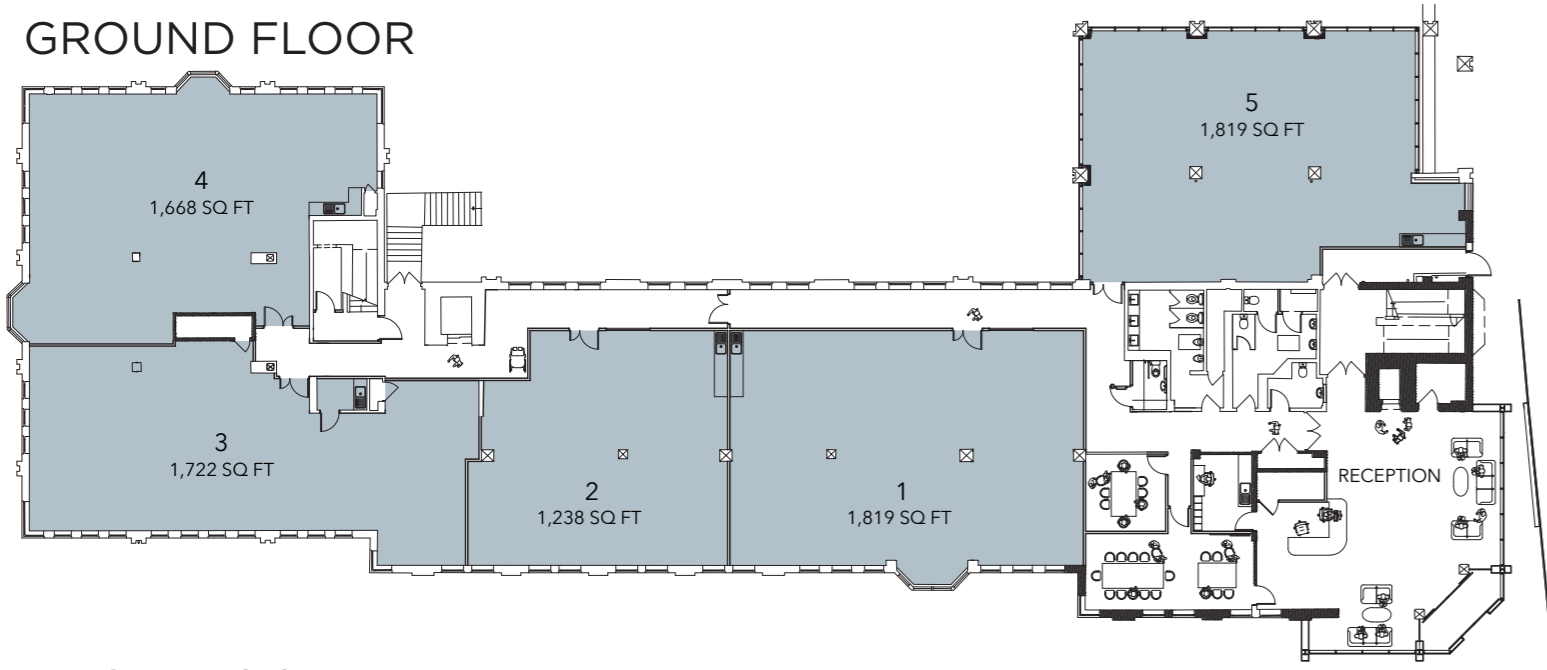
Raised access flooring across all floors to support flexible layouts

The Building

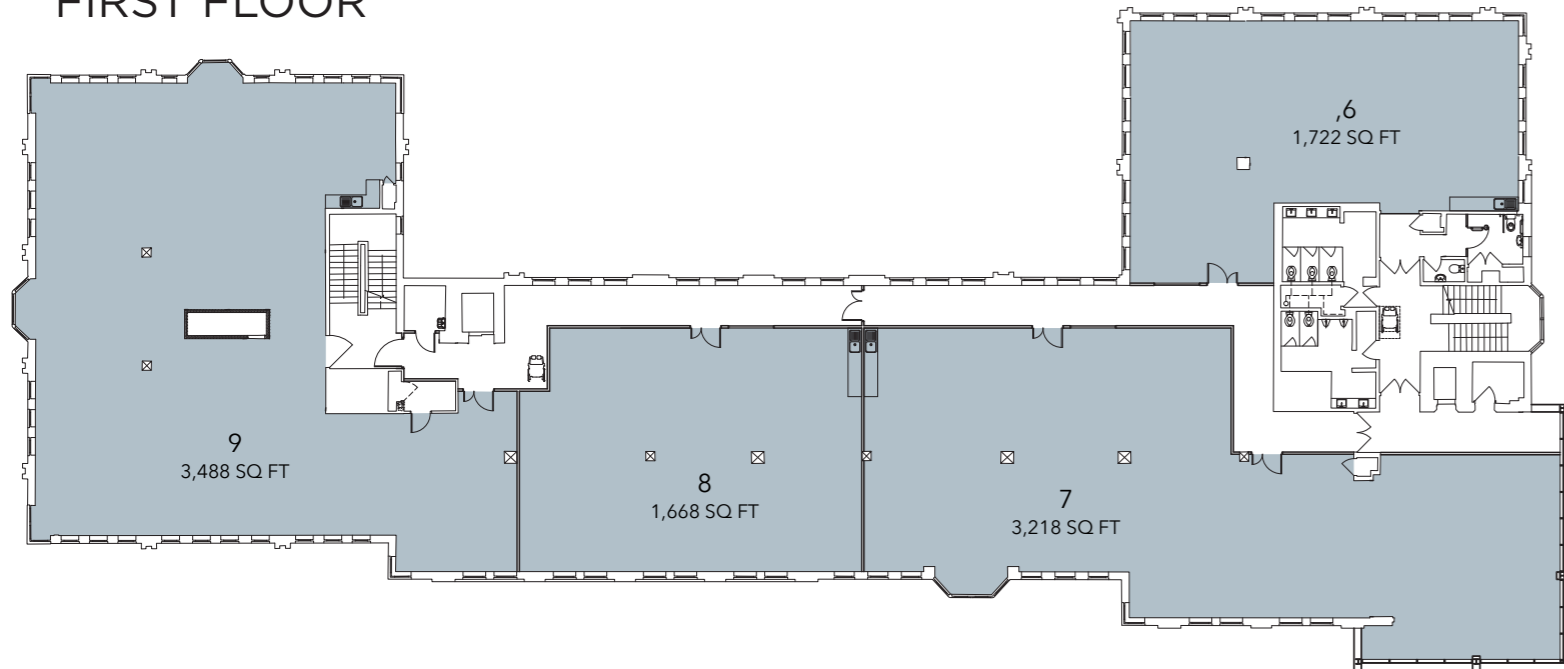
Arranged over ground and two upper floors, Indigo Place combines architectural presence with a clean, contemporary interior. From arrival, the building is designed to make an impression. A striking, design-led reception sets the tone, creating a strong arrival experience for the workspace beyond.



GROUND FLOOR



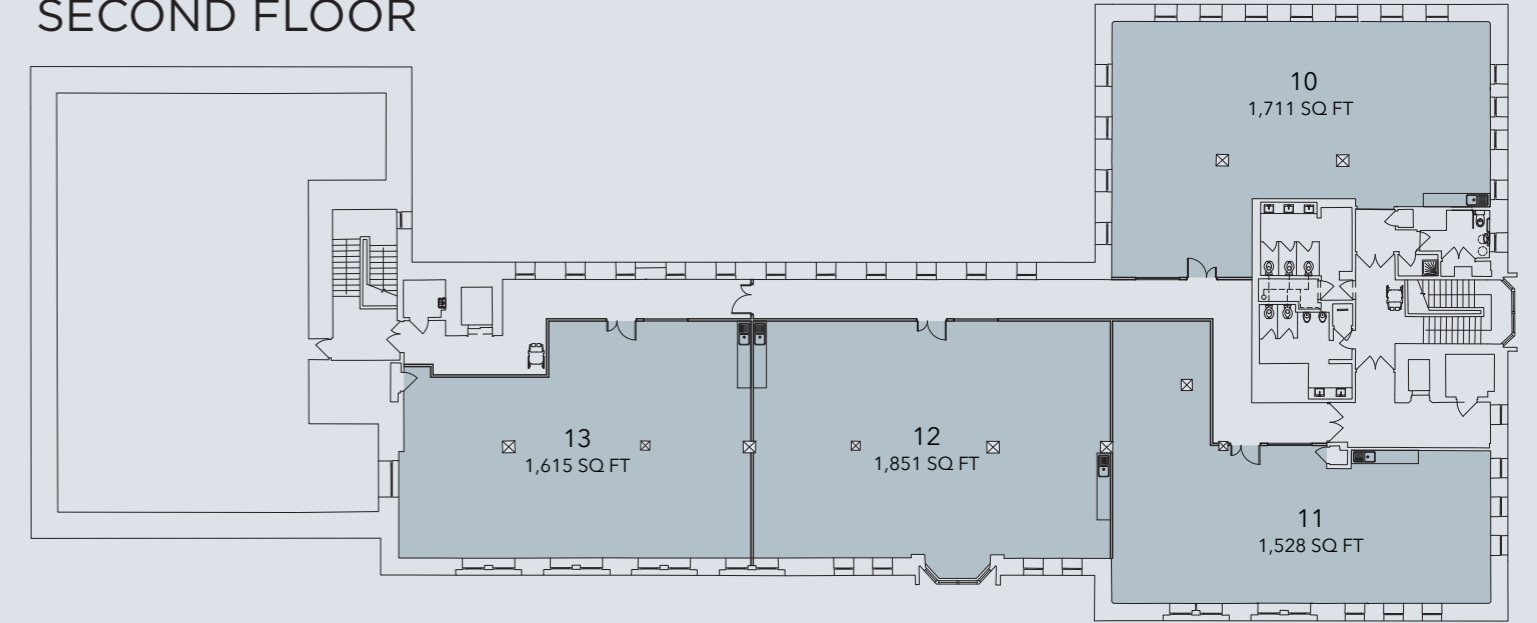
FIRST FLOOR



ACCOMMODATION

Office	sq ft	sq m
1	1,819	169.0
2	1,236	114.8
3	1,722	160.0
4	1,668	154.9
5	1,819	169.0
6	1,722	160.0
7	3,218	299.0
8	1,668	154.9
9	3,488	324.0
10	1,711	159.0
11	1,528	142.0
12	1,851	172.0
13	1,615	150.0
TOTAL	24,645	2,289.6

SECOND FLOOR



A Place to Grow

Indigo Place is more than just an office - it is a setting designed to support ambitious businesses.

Combining strong connectivity, considered design and a high-quality working environment, it offers occupiers a space that works as hard as they do.

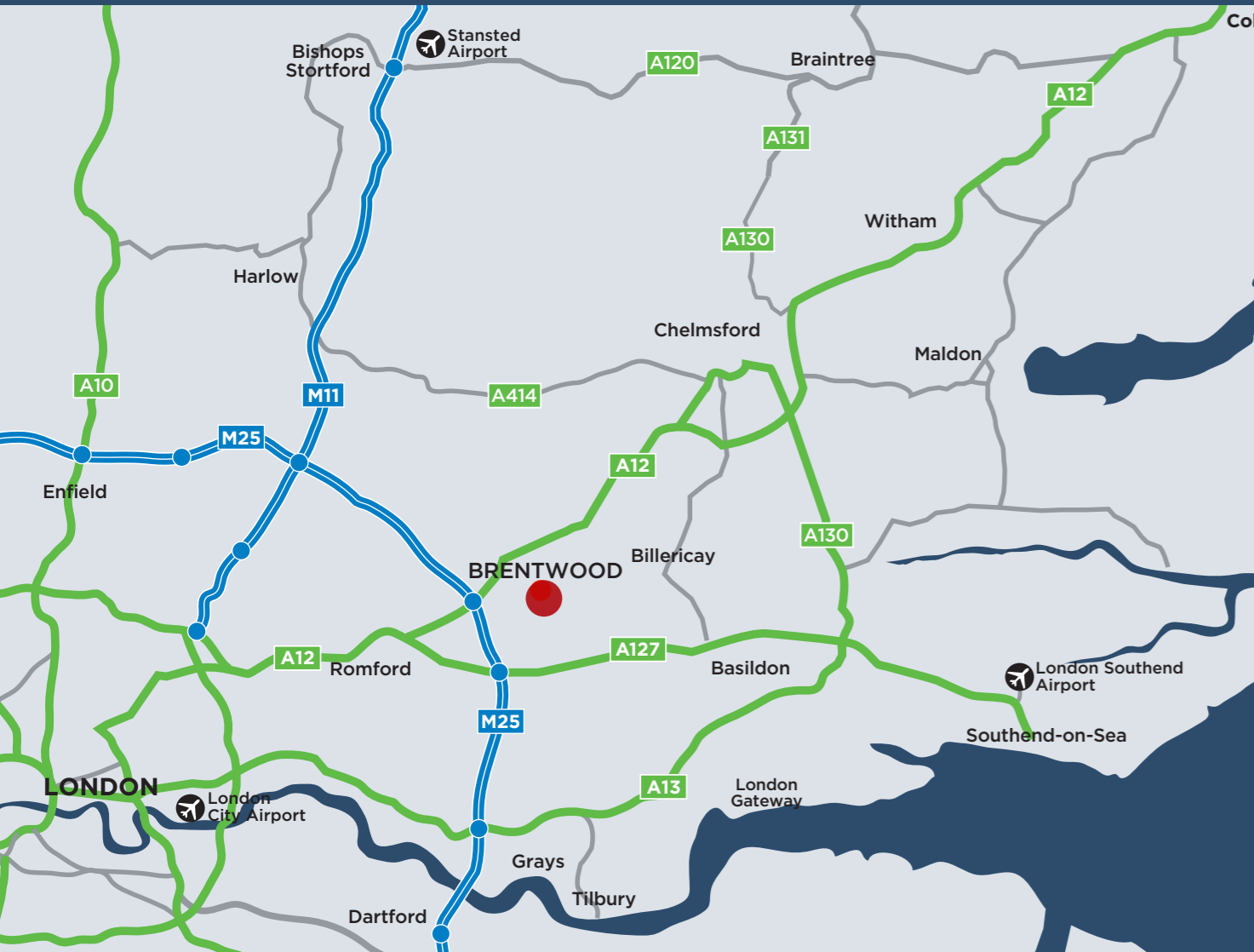
Backed by a team with over 25 years' experience delivering premium office developments, Indigo Place is in capable hands.

Every detail has been approached with a clear understanding of what modern businesses expect - and what they value long term.





THIS CONNECTIVITY MAKES INDIGO PLACE AN IDEAL BASE FOR BUSINESSES BALANCING A LONDON PRESENCE WITH REGIONAL ACCESSIBILITY



Location & Connectivity

Indigo Place sits directly opposite Brentwood station, placing your business at the centre of one of Essex's best-connected commuter towns.

Brentwood offers fast, straightforward access into London while remaining well positioned for road travel across the region:

- Directly opposite Brentwood railway station
- Fast, direct connections across central London via the Elizabeth Line
- Around 30 minutes to London Liverpool Street
- Approximately 25 miles from London
- Just 2 miles from Junction 28 of the M25 motorway
- Immediate access to the A12 road linking London to East Anglia
- Convenient access to London Stansted Airport, London City Airport and London Southend Airport

Workspace

Indigo Place is designed around the needs of modern occupiers, offering high-specification office suites tailored to individual business requirements.

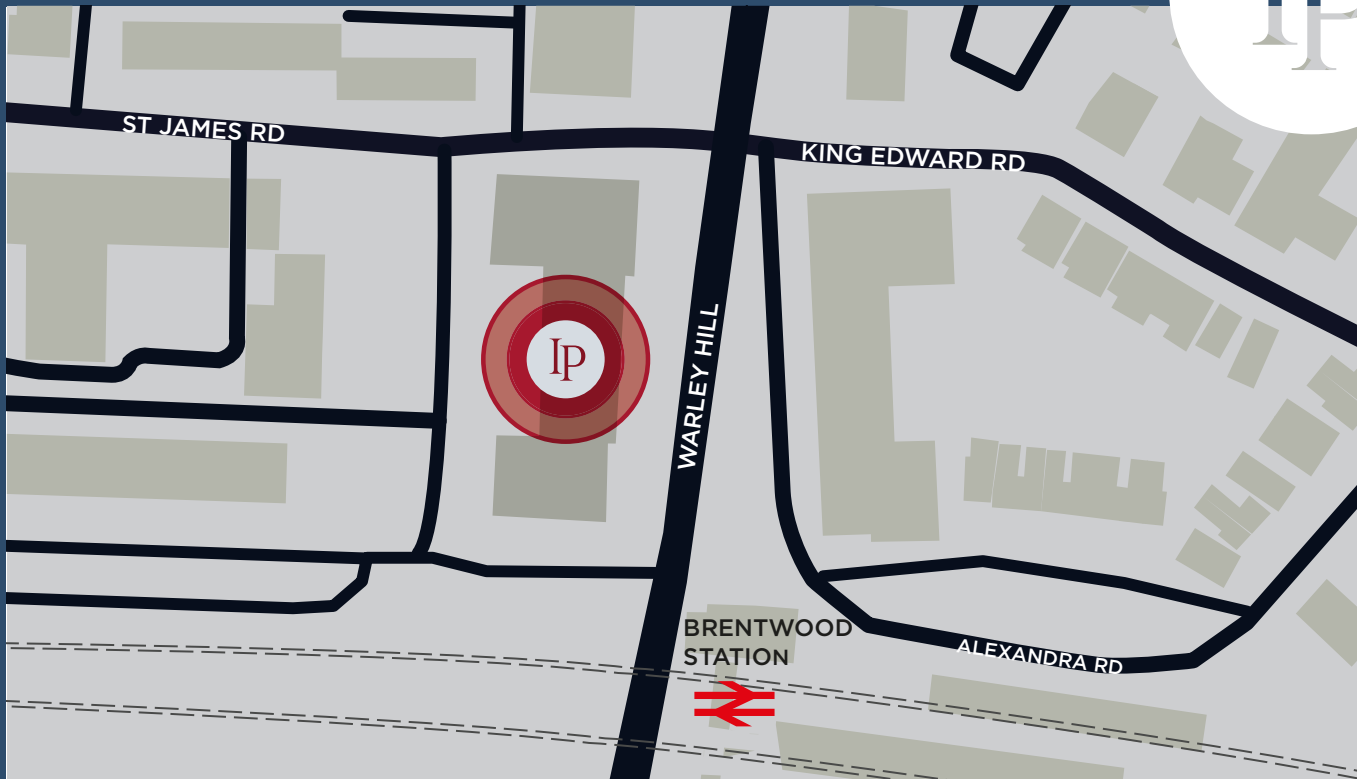
Each space is refurbished ahead of occupation, providing a ready-to-use environment that is both practical and professionally presented from day one.



Amenities

- High-speed fibre connectivity
- Air-conditioned, modern office environments
- Bookable meeting rooms and breakout spaces
- Outdoor breakout and seating areas
- Staffed reception services
- On-site parking with EV charging provision
- Secure bike storage and shower facilities
- Full accessibility throughout
- CCTV and secure access systems





INDIGO — PLACE —



Mike Storrs
mstorrs@savills.com
07881 507 780



Chris Cornhill
chris.cornhill@kemsley.com
07342 038 292

David Sewell
david.sewell@kemsley.com
07837 409 316

The particulars in this brochure have been produced in good faith, are set out as a general guide and do not constitute the whole or part of any contract. All liability, in negligence or otherwise, arising, from the use of the particulars is hereby excluded. Photography has been retouched digitally. June 2026.