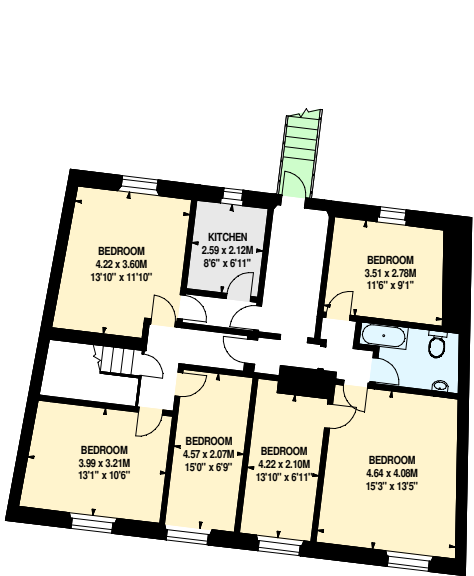
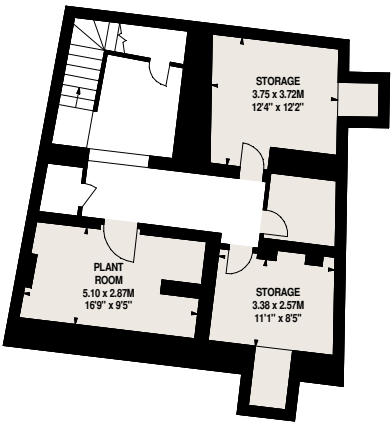


Canteen Axminster,  
Trinity Square,  
Axminster,  
Devon, EX13

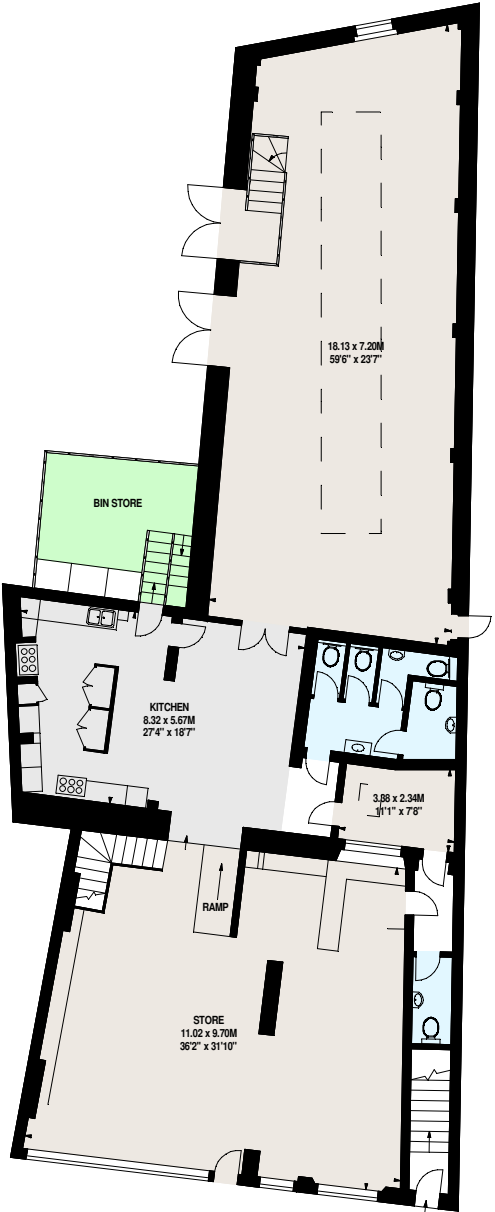
Approximate Gross Internal Area 611 sq m / 6577 sq ft



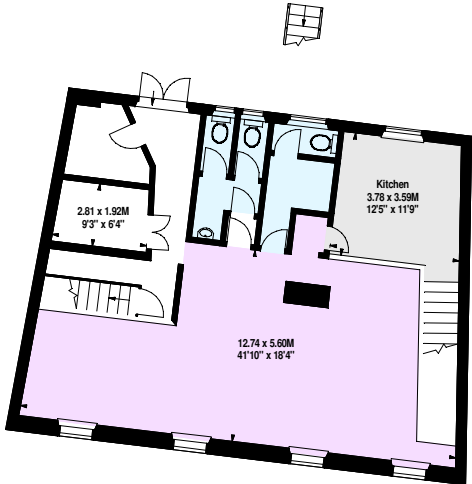
Second Floor



Basement



Ground Floor



First Floor

Floor Plan produced for Chestertons by Mays Floorplans © . Tel 020 3397 4594  
Illustration for identification purposes only. Not to scale.  
Orientation, measurements, and other details are approximate and for guidance only,  
purchasers should verify details independently.  
Where a room has a sloping ceiling the dotted line marks 1.50M height,  
and all measurements shown are at floor level.