







Up to

**12,453** sq ft

**of contemporary workspace for tomorrow's world.**

Available now





# Steeped in History





Work in an  
architectural icon

# A historic façade interwoven with next-generation workspace



16 St Martin's Le Grand boasts a fascinating history, from 1925 it served as the headquarters, showroom and dispatch depot for the burgeoning Courtauld family textile business, later to become the world's largest. This iconic building gives a fascinating insight into the City's history as a powerful centre of commerce, and its elegant period features set the perfect backdrop to this newly refined, contemporary workspace opportunity.





View of the reception





# Local Area



# Restaurants, Cafés and Bars

## Hotels

## Fitness & Green Spaces

## Culture

1. Pret A Manger
2. Millie's Lounge
3. Cabotte
4. Hawksmoor Guildhall
5. Coq D'Argent
6. Barbie Green
7. Pret A Manger
8. Burger and Lobster
9. Black Sheep Coffee
10. Gordon Ramsay Street Burgers
11. Bom Pecado
12. Manicomio
13. Rucoletta
14. Ivy Asia St Paul's
15. Sea Horse Fleet Street
16. Coco di Mama
17. Wren Coffee
18. Dion Bar and Restaurant
19. Mangio Pasta & Bottega
20. Sabien Rooftop Bar





## Culture

1. Threadneedles, Autograph Collection
2. The Counting House
3. Montcalm
4. South Place Hotel
5. Apex London Wall
6. The Ned
7. Vintry and Mercer
8. The Westin London City
9. Leonardo Royal London
10. Malmaison
11. Lost Property, St Paul's
12. Club Quarters Hotel
13. The Zetter Townhouse
14. Hyatt Regency London Blackfriars





## Restaurants, Cafés, Bars

## Hotels

## Fitness & Green Spaces

## Culture

1. Finsbury Circus Gardens
2. Digma Fitness Moorgate
3. St Mary Aldermanbury Garden
4. St Alphage Gardens
5. Churchyard of St John Zachary
6. Barry's
7. WIT Training
8. Fitness First Queen Victoria Street
9. Festival Gardens
10. Nuffield Health
11. Postman's Park
12. PureGym
13. Charterhouse Square
14. Virgin Active
15. Smithfield Rotunda Garden
16. Christchurch Greyfriars Church Garden





## Restaurants, Cafés, Bars

## Hotels

## Fitness & Green Spaces

## Culture

1. Guildhall Art Gallery
2. Roman Wall
3. Barbican Centre
4. Shakespeare's Globe
5. St Paul's Cathedral
6. Tate Modern
7. Carter Lane Gallery
8. Southbank Centre
9. Dr Johnson's House
10. The Ingram Collection







Postman's Park

Relax and unwind

# Abundant green spaces, all within a short walk



Greenhouse,  
The Barbican







St Alphege Garden





Festival Gardens



The Barbican

Culture on  
your doorstep

# A remarkable location, immersed in culture



Guildhall Art Gallery



Enjoy the hustle &  
bustle of the City

# Surrounded by diverse opportunities for food & drink

Ivy Asia



Club Gascon



The Rising Sun



Barbie Green





# Discover the details





7  
6  
5  
4  
3  
2  
1  
G

View of the reception





View of the main entrance facing St Paul's



View of the rear Foster Lane entrance



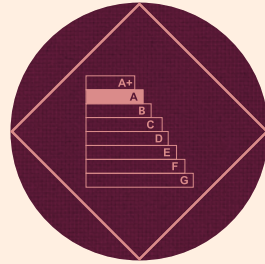
# Summary Specification



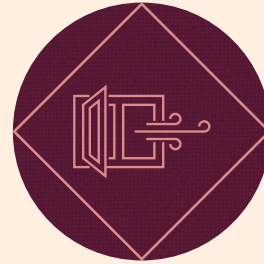
BREEAM  
Excellent



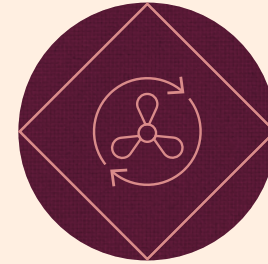
WiredScore  
Platinum



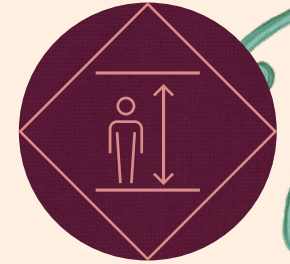
EPC A



Openable  
windows



High efficiency VRF heat  
pump system for heating  
and cooling



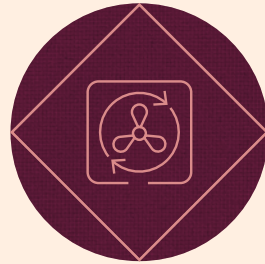
3040–3680mm Floor  
to ceiling height



High efficiency LED  
lighting with occupancy  
controls throughout



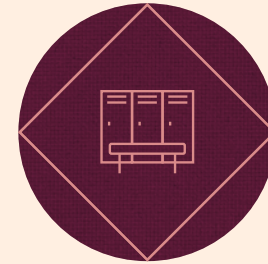
100% Electric  
building



Low energy central fresh  
air distribution system  
with demand control



Circular economy  
measures



9 Showers, 103 lockers,  
and 81 cycle spaces with  
Brompton lockers



1:10  
Occupational  
density



# The Building



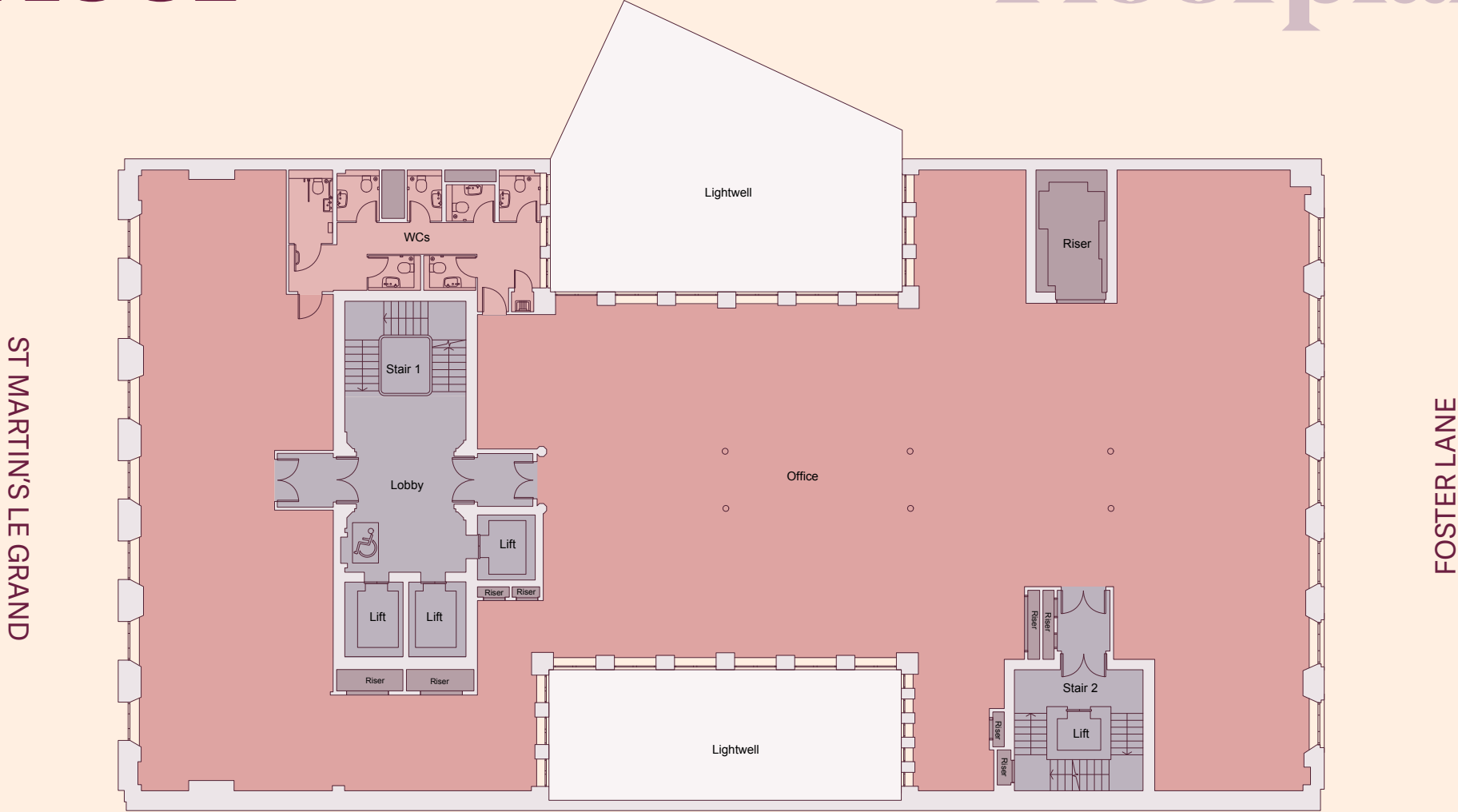


# Third Floor

6,226 sq. ft  
578 m<sup>2</sup>

- Available
- WCs
- Landlord Demise
- Core

# Floorplan







View of the 3rd Floor

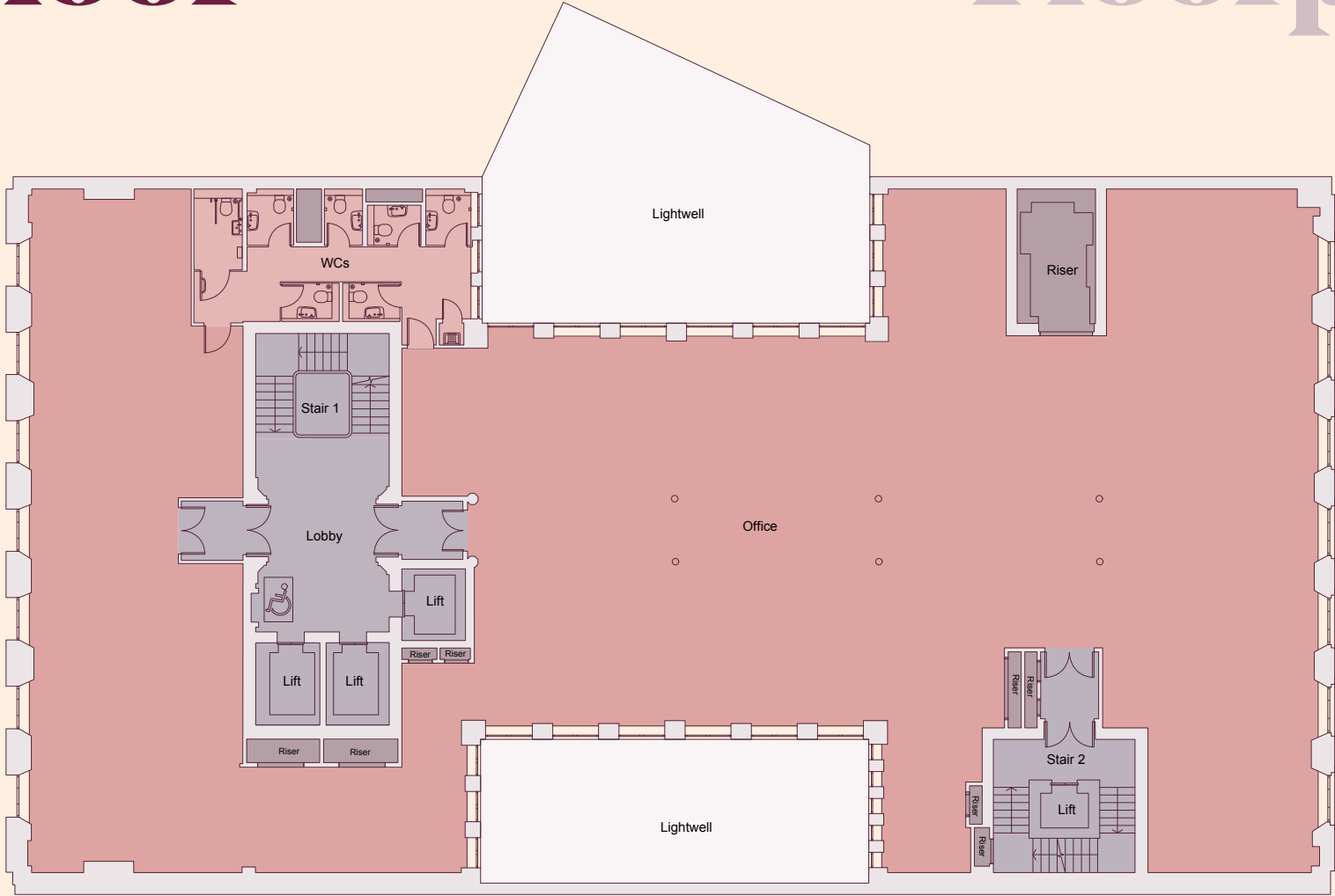


# Second Floor

6,227 sq. ft  
579 m<sup>2</sup>

- Available
- WCs
- Landlord Demise
- Core

ST MARTIN'S LE GRAND



FOSTER LANE

# Floorplan



# Basement

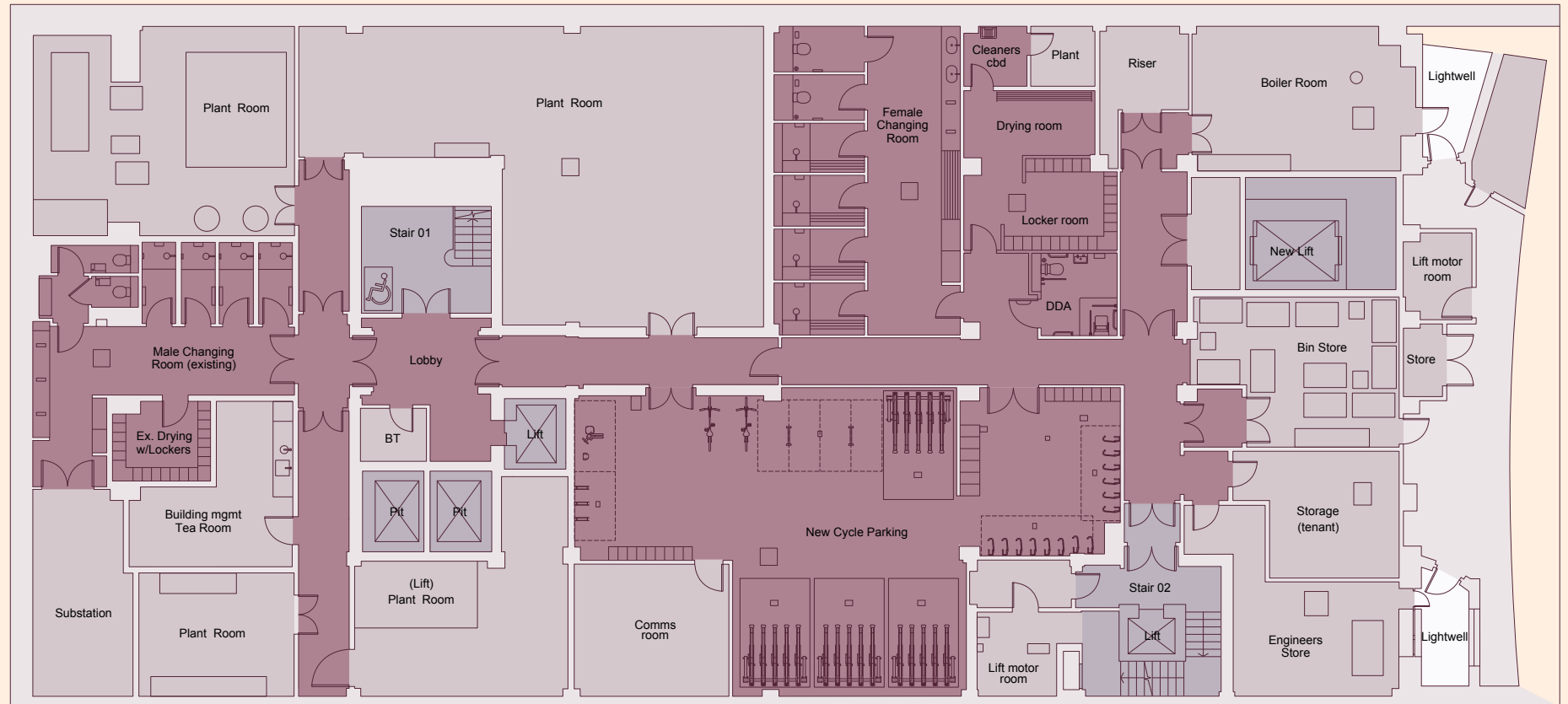
# Floorplan

● Tenant Facilities

● Landlord Area

- 9 showers
- 103 lockers
- 81 cycle spaces with Brompton lockers

ST MARTIN'S LE GRAND







View of the women's changing room





View of the bike storage entrance





View of the bike storage space





ST. MARTIN'S LE GRAND

16

16

View of the façade



A Development By

**ST  
MARTINS**



**Rob Macnab**

rob.macnab@knightfrank.com  
+44 (0)7905 300 160

**Ben Player**

ben.player@knightfrank.com  
+44 (0)7814 066 311

**Eloise Wordie**

Eloise.Wordie@knightfrank.com  
+44 7976 668 506

**AVISON  
YOUNG**

**Jamie Major**

jamie.major@avisonyoung.com  
+44 (0)7799 341 569

**James Walker**

james.walker@avisonyoung.com  
+44 (0)7957 388 184

**Daniel Gilbert**

daniel.gilbert@avisonyoung.com  
+44 (0)7879 475112

Important notice relating to the Misrepresentation Act 1967 and the Property Misdescriptions Act 1991: (i) the particulars are set out as a general outline only for guidance of intending purchasers or lessees and do not constitute, nor constitute part of, an offer or contract (ii) all descriptions, dimensions, references to condition and necessary permission for use and occupation, and other details are given in good faith and are believed to be correct, but any intending purchasers or occupiers should not rely on them as statements or representations of fact, but must satisfy themselves by inspection or otherwise as to the correctness of each of them. Published Q4 2025.