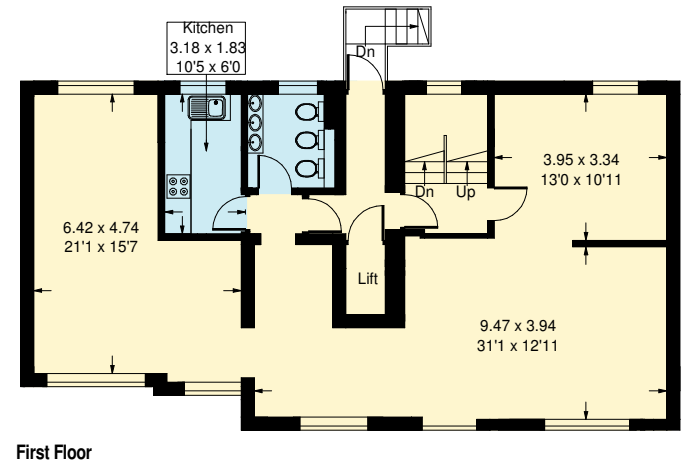
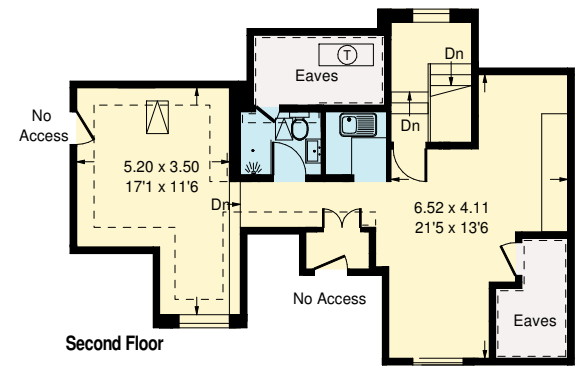
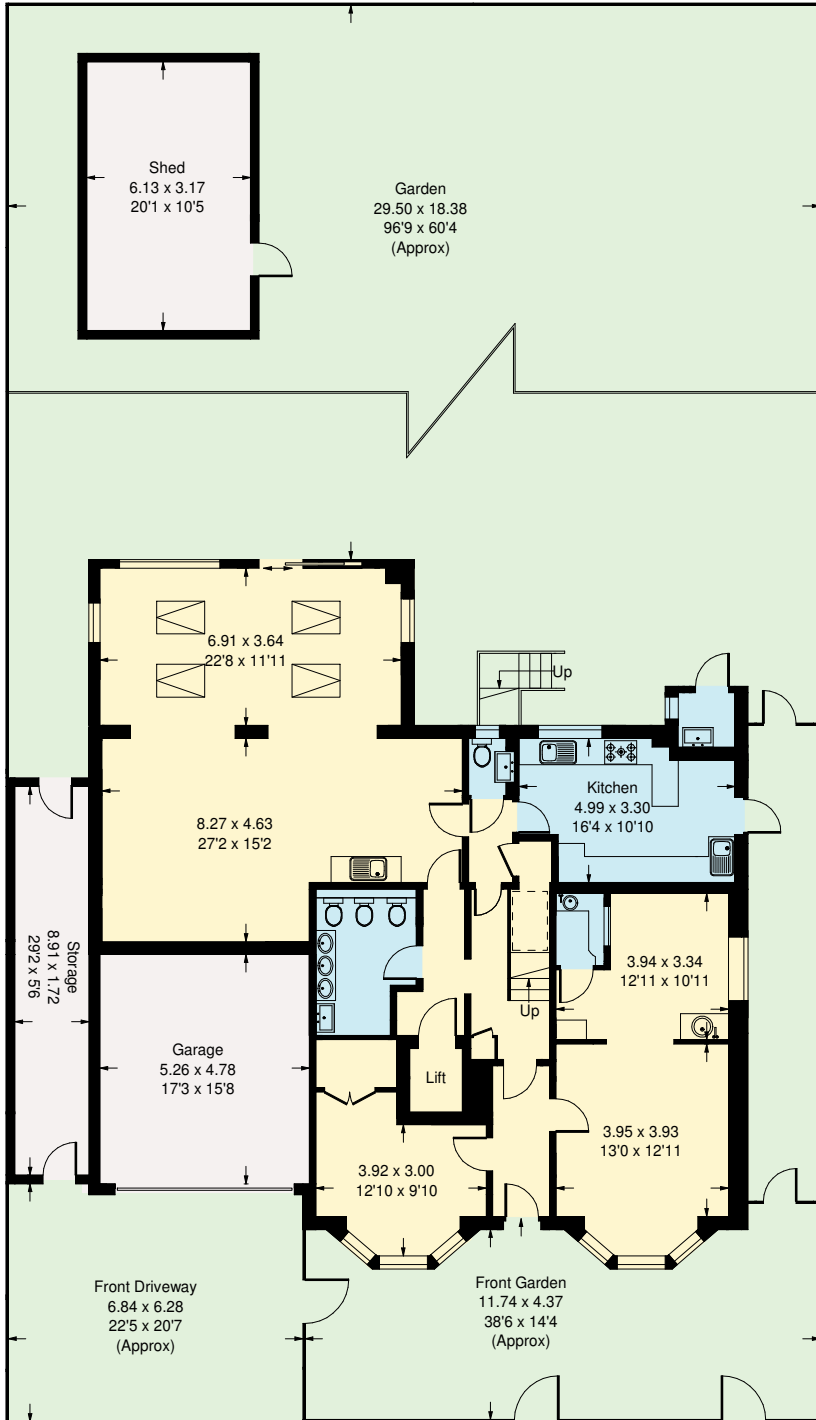


Blair Athol, TW13

Approx Gross Internal Area = 317 sq m / 3412 sq ft
 Eaves = 8.6 sq m / 93 sq ft
 Storage = 15 sq m / 161 sq ft
 Garage = 25.2 sq m / 271 sq ft
 Shed = 19.4 sq m / 209 sq ft
 Total = 385.2 sq m / 4146 sq ft
 (Including lift)



Ground Floor

Whilst every attempt has been made to ensure the accuracy of the floor plan, measurements are approximate and not to scale. No guarantee is given on the total square footage of the property quoted on the plan. Figures given are for guidance. Plan is for illustration purposes only, not to be used for valuations.