

Bredbury Park

Bredbury Park Way, Bredbury,
Stockport SK6 2TJ

Modern Warehouse
Available to let | 79,259 sq ft

Immediately available



Fully Refurbished space



Modern industrial warehouse

The unit comprises open plan warehousing , benefitting from 11.5M eaves height, LED lighting throughout, complete with a small mezzanine area and ancillary accommodation.

The property provides office accommodation and welfare facilities over two floors, including staff canteen / kitchenette area on ground and first floor.

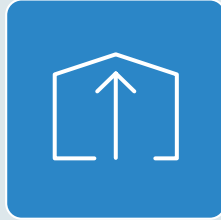
Externally the unit benefits from a large, roof mounted PV installation, the energy from which can be utilized onsite. The service yard is accessed via the western elevation of the building with ample circulation space and a yard depth up to 65M. Separate customer/ onsite car parking is available via the southern entrance with the inclusion of 6 EV charge points. Both access points benefit from secure sliding electronic gates.

Modern industrial warehouse

79,259 sq ft



Circa 70 car parking spaces



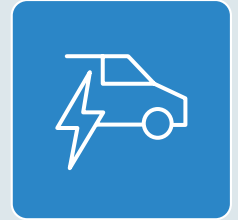
11.5 m eaves height



6 docks doors/
3 level access doors



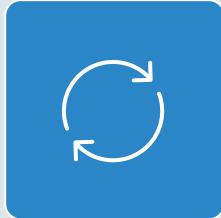
Two storey office accommodation



6 EV charging points



Up to 65M yard depth



565 PV panels with an estimated output of 248.35MWh



Secure self-contained site



A rated EPC



Fully sprinklered

Site plan & accommodation

Bredbury Park

Area (sq ft)

Area (sq m)

Warehouse

71,066

6,602

Office/ ancillary

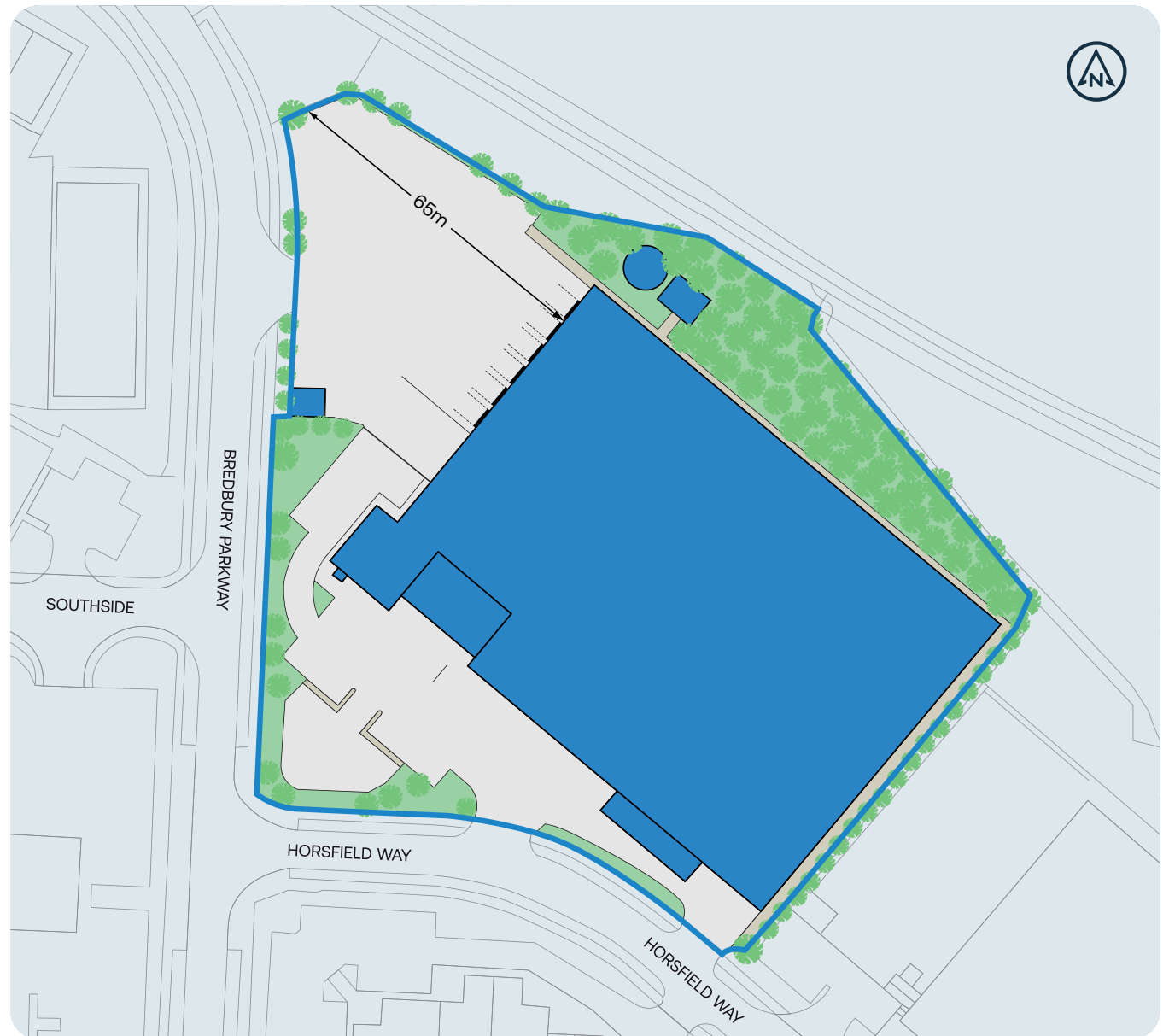
8,193

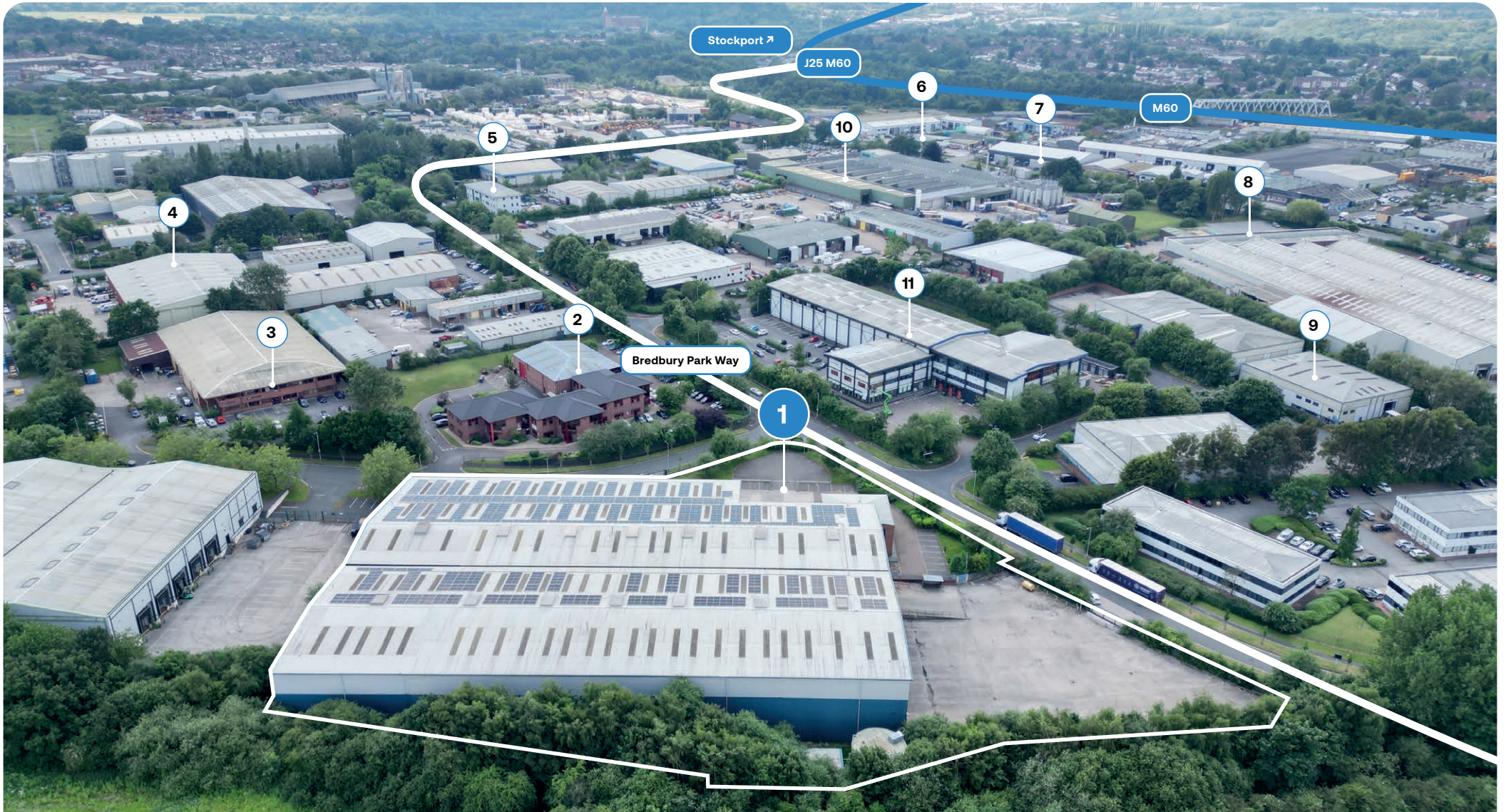
761

Total

79,259

7,363





- | | | | |
|--------------------------------|-------------------|--------------|----------------------|
| 1 Bredbury Park | 4 Rethal | 7 Screwfix | 10 Frederic Robinson |
| 2 Emerson Automation Solutions | 5 Chapel Press | 8 Renold plc | 11 David Luke |
| 3 Satake Europe Ltd | 6 Darren Wood BMW | 9 DEXL Ltd | |





Location



Bredbury Park is located on Bredbury Industrial Estate which has a reputation in the market as a key location for industrial and logistics occupiers in the North West region.

The estate lies approximately 3 miles to the east of Stockport town centre and 9 miles to the south of Manchester City Centre. Manchester Airport is circa 8 miles away.

Travel times



By Road

Located less than a mile to Junction 25 of the M60, Bredbury Park benefits from excellent access to the regional road network. The subject property's position close to the M60 also provides access to the M56, M62 and M6 motorways further establishing its prominence.



By Rail

Bredbury has a local train station with frequent services running to Manchester Piccadilly which provides intercity rail services to all major UK cities.



By Air

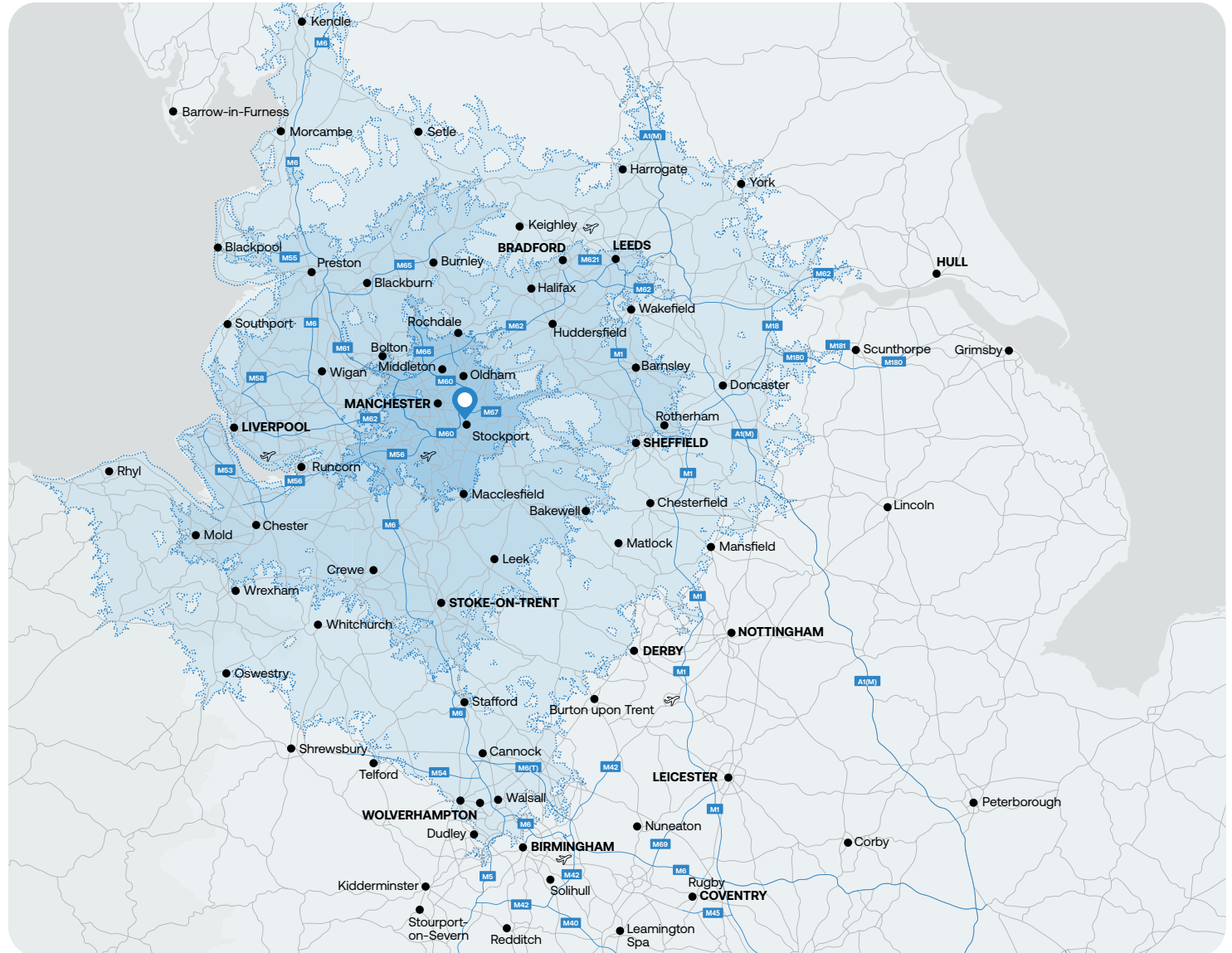
Liverpool John Lennon is 1 hour away and Manchester International Airport is 15 mins away.

Car drive times

30mins

60mins

90mins



Bredbury Park

Bredbury Park Way, Bredbury, Stockport SK6 2TJ
Warehouse
Available to let | 79,259 sq ft

[Book a viewing](#)

Mileway

Tristan Boulter
T: 01925 358160
northwest@mileway.com



Will Kenyon
T 07802 869 279
will@b8re.com



Mark Sillitoe
T 07970 072 128
ms@willsill.co.uk

Further information:

EPC

EPC is available upon request.

VAT

VAT will be payable where applicable..

Legal Costs

All parties will be responsible for their own legal costs incurred in the transaction.

Anti-Money Laundering Regulations

Anti-Money Laundering Regulations In order to discharge its legal obligations, including under applicable anti-money laundering regulations, the successful applicant will agree to provide certain information when Heads of Terms are agreed.

This document (together with any attachments, appendices, and related materials, the "Materials") is provided on a confidential basis for informational due diligence purposes only and is not, and may not be relied on in any manner as legal, tax, investment, accounting or other advice or as an offer or invitation to lease the property referred to herein or otherwise enter into any other transaction, agreement or arrangement, nor shall it or the fact of its distribution form the basis of, or be relied on in connection with, any lease or other contract or any commercial or investment decision. If such offer is made, it will only be made by means of heads of terms (collectively with any additional documents, the "Heads of Terms"), which would contain material information not contained in the Materials and which would supersede and qualify in its entirety the information set forth in the Materials. In the event that the descriptions or terms described herein are inconsistent with or contrary to the descriptions in or terms of the Heads of Terms, the Heads of Terms shall control. None of Mileway nor any of its respective affiliates makes any representation or warranty, express or implied, as to the accuracy or completeness of the information contained herein and nothing contained herein should be relied upon as a promise or representation of any kind.