

# 92 COMMERCIAL STREET, E1

1,158 SQ. FT.

PRIME SPITALFIELDS RETAIL OPPORTUNITY FOR RENT

92 COMMERCIAL STREET, E1



## DESCRIPTION

This prime retail unit is arranged over ground & lower ground floors, forming part of a period mixed-use building,

Located directly opposite Spitalfields Market, the property, which has an E Class Use, ideally suits a wide variety of retail occupiers, also benefitting from a prominent return frontage.

## PRIME SPITALFIELDS RETAIL / CLASS E OPPORTUNITY



## AMENITIES



WC FACILITIES



EXCELLENT  
TRANSPORT LINKS



E CLASS USE



GOOD FRONTAGE



EXCELLENT  
NATURAL LIGHT



GOOD FOOTFALL



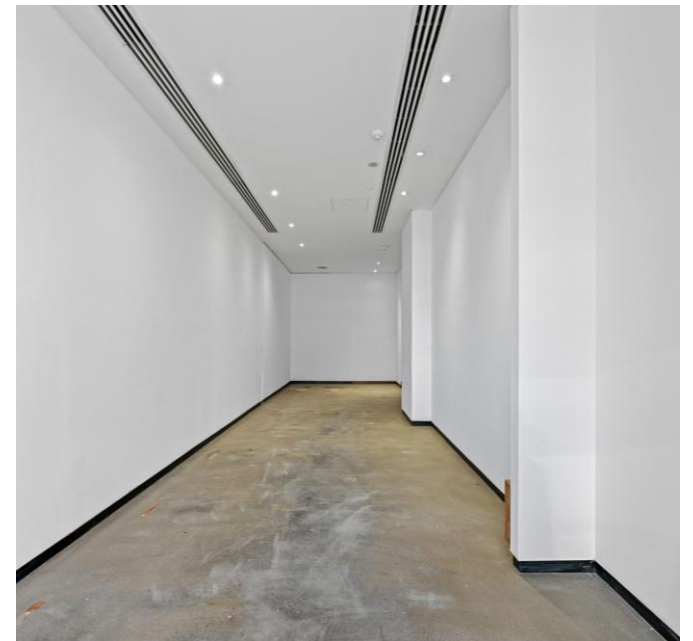
SELF-CONTAINED



7 DAY TRADE



AIR  
CONDITIONING



## TRANSPORT

Shoreditch High Street - 5 mins



Liverpool Street – 6 mins



Old Street – 15 mins



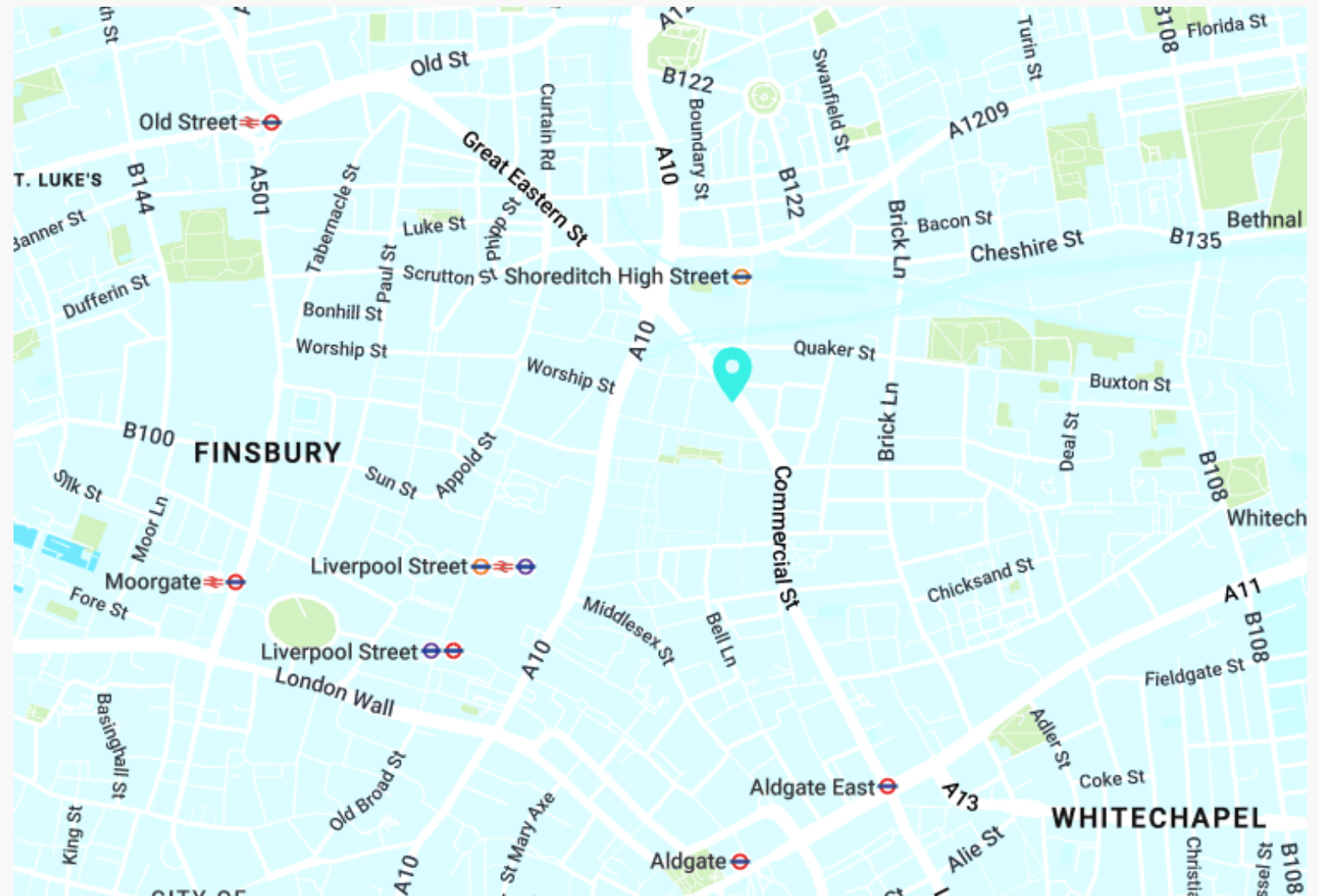
## AREA

Occupying a prominent position in this sought after 7-Day trading location, directly opposite Spitalfields Market,

Spitalfields is now an established tourist destination being the natural route from Liverpool Street to Brick Lane & the Truman Brewery site.

Adjacent & notable occupiers include, All Saints, Hawksmoor, Watch House, Uniqlo and Aesop.

## LOCATION



## AVAILABILITY

FLOOR	SIZE (SQ FT)	STATUS	RENT (PA)	RATES (PA)	SERVICE CHARGE (PA)	TOTAL (PCM)
GF	479					
LG	679					
<b>TOTAL</b>	1,158	Under Offer	£100,000	£23,108	n/a	£10,259

### LEASE

A new lease to be contracted outside the Landlord & Tenant Act

### TIMING

Available immediately

### CONTENT

View on our website



### RATES

The rates given are a guide and interested parties should make their own enquiries with the local authority.

### VAT

VAT is applicable.

# VIEWINGS VIA SOLE AGENTS

## **BELCOR**

020 7375 3444  
agency@belcor.london  
www.belcor.london

## **TEAM**



**LUCY STEPHENS**  
**DIRECTOR**  
ls@belcor.london  
07789 843 729



**DANIEL JACKSON**  
**AGENCY**  
dj@belcor.london  
07725 253 254

020 7375 3444  
www.belcor.london