

**fisher  
german**

**Farringdon**

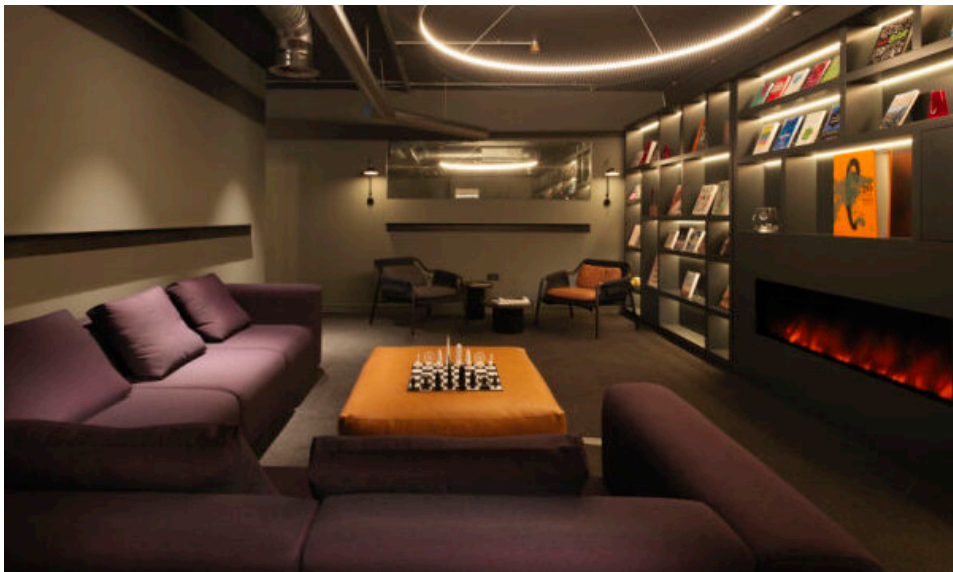
71 Central Street  
London, EC1V 8AB

40 - 107 Desks  
Self Contained Offices

2,567 - 5,828 Sq.ft



**Licence** | £27,900 - £63,140 + VAT pcm



## Accommodation

### Description

71 Central Street is a modern, serviced office and coworking space located on the border of Clerkenwell and Old Street, offering a variety of workspace solutions and amenities. It is designed to cater to businesses of all sizes with fully furnished offices, meeting rooms, breakout areas, and event spaces. The building also features a wellness suite, kitchens, and access to an on-site Italian restaurant, Palatino. It's well-connected, with excellent transport links and is close to Old Street, Barbican, and Farringdon stations.

### Licence Term

New Licences are available for a term by arrangement.

Desks	Size Sq.ft	Price (Monthly)	Available
40	2,567	£27,900	Now
55	3,261	£35,330	Now
107	5,828	£63,140	Now

### Amenities



Meeting  
Rooms



Showers



Bike  
Rack



Phone  
Booths



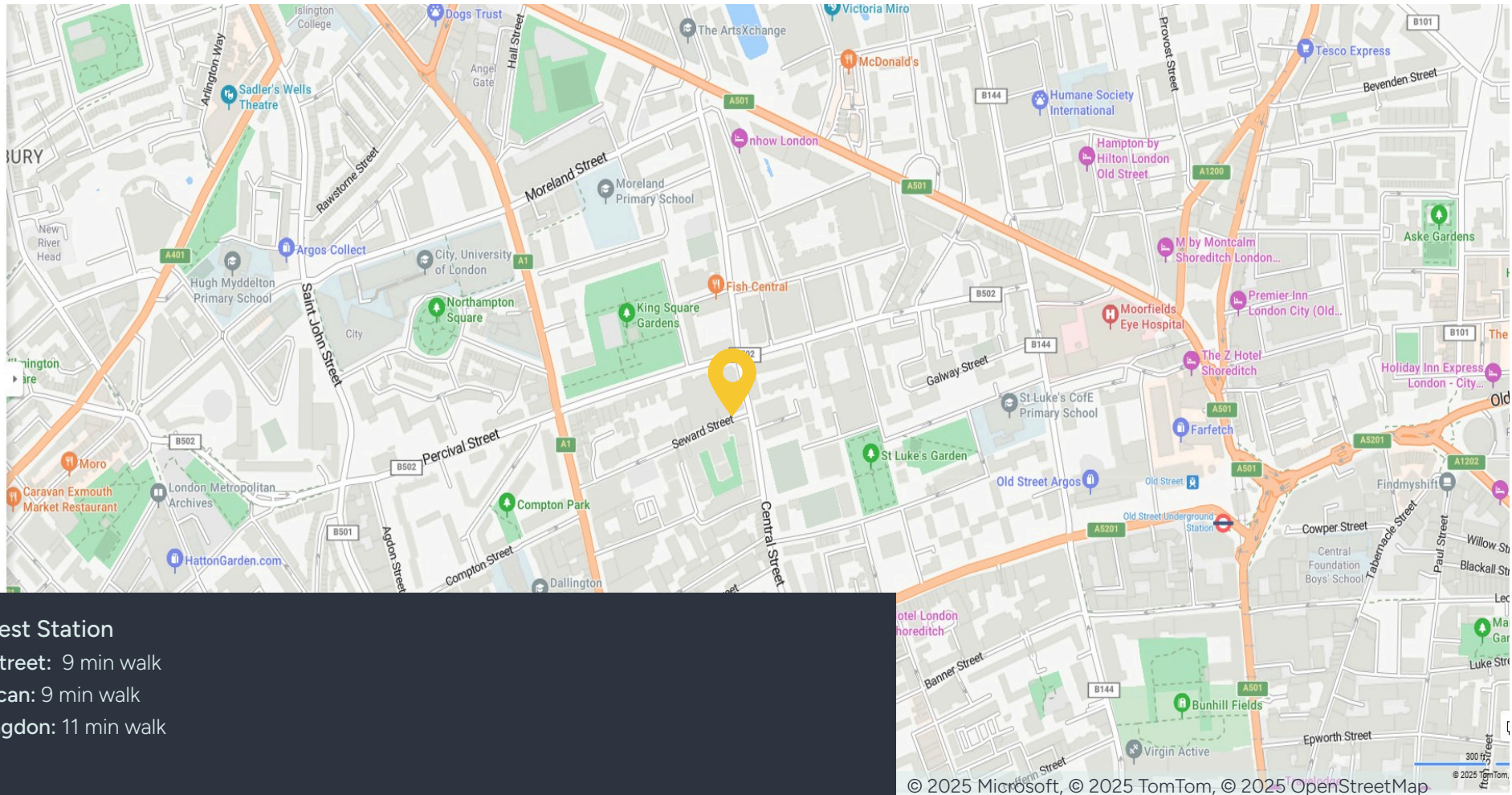
Gym



Dog  
Friendly



## Location



### Nearest Station

Old Street: 9 min walk

Barbican: 9 min walk

Farringdon: 11 min walk

## Contact us

Viewings by appointment only.

To arrange a viewing, please contact:



**Doug Gordon**

020 7747 3117

[Doug.gordon@fishergerman.co.uk](mailto:Doug.gordon@fishergerman.co.uk)



**Jessie High**

020 7747 3142

[Jessie.high@fishergerman.co.uk](mailto:Jessie.high@fishergerman.co.uk)

Please note: Fisher German LLP and its Joint Agents give notice that: 1. They have no authority to make or give any representation or warranty on any property whether on their own behalf or on behalf of their clients or otherwise. 2. They do not owe any duty of care to you and assume no responsibility for any statements, representations, warranties or otherwise made in the particulars and you should not rely on those in the particulars. 3. The particulars are produced in good faith are set out as a general guide only and do not constitute or form an offer or a contract or part thereof. 4. Any photographs, descriptions, plans, measurements, distances and any other details in the particulars are approximate estimates only taken as the property appeared at the time and should not be relied upon as factually accurate. 5. Fisher German assumes prospective purchasers/tenants have carried out inspections to satisfy themselves that the information in the particulars is correct.

Particulars dated July 2025. Photographs dated 2025.



This brochure is fully recyclable