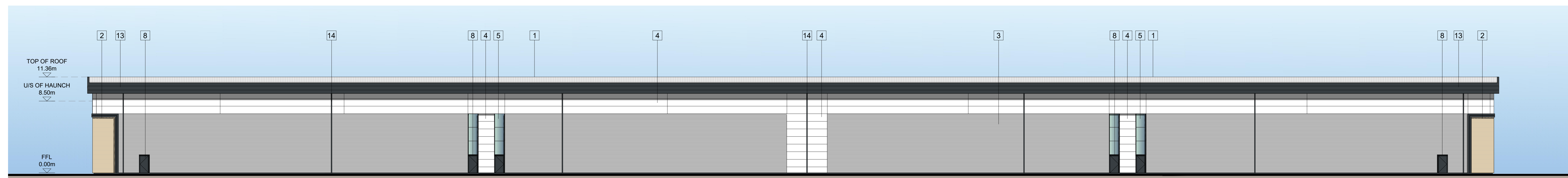
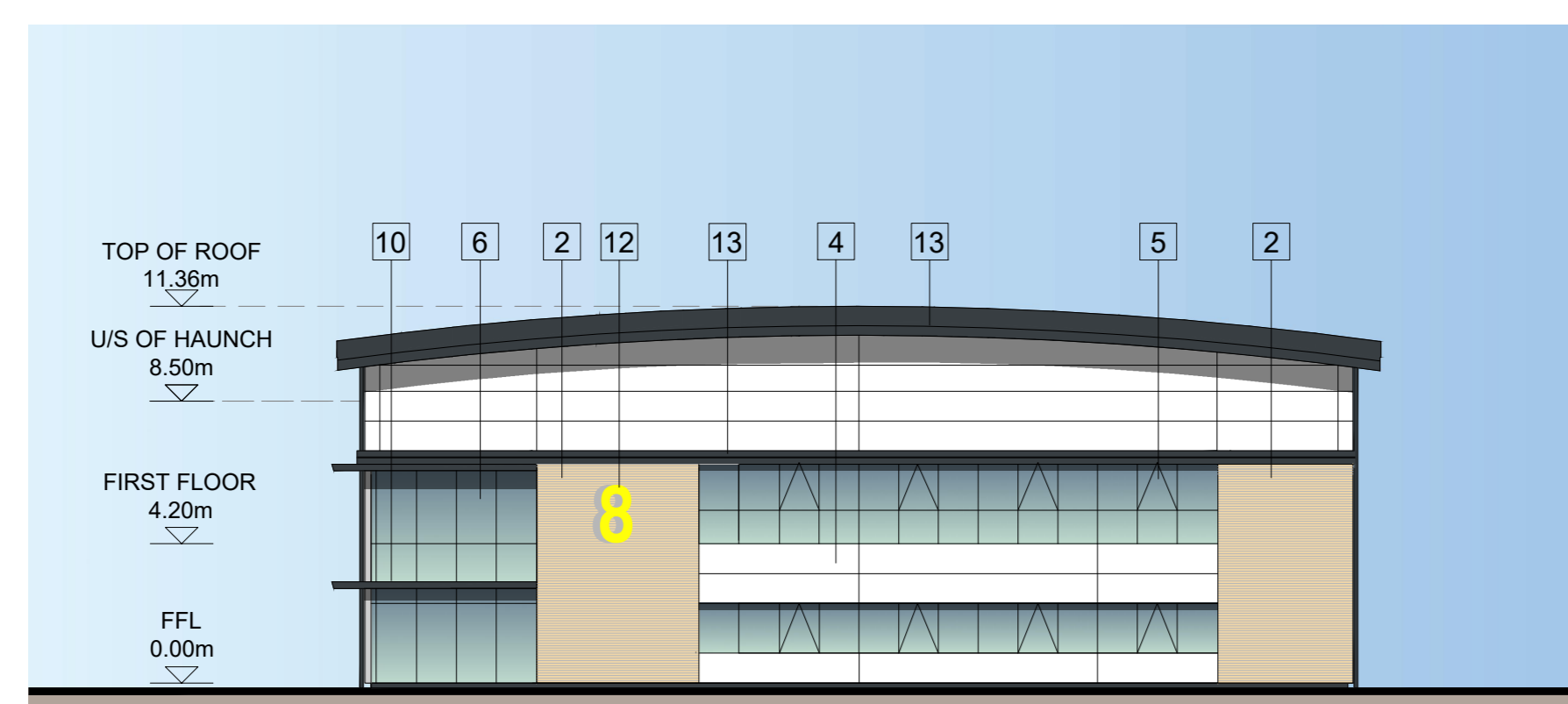


NORTHERN ELEVATION

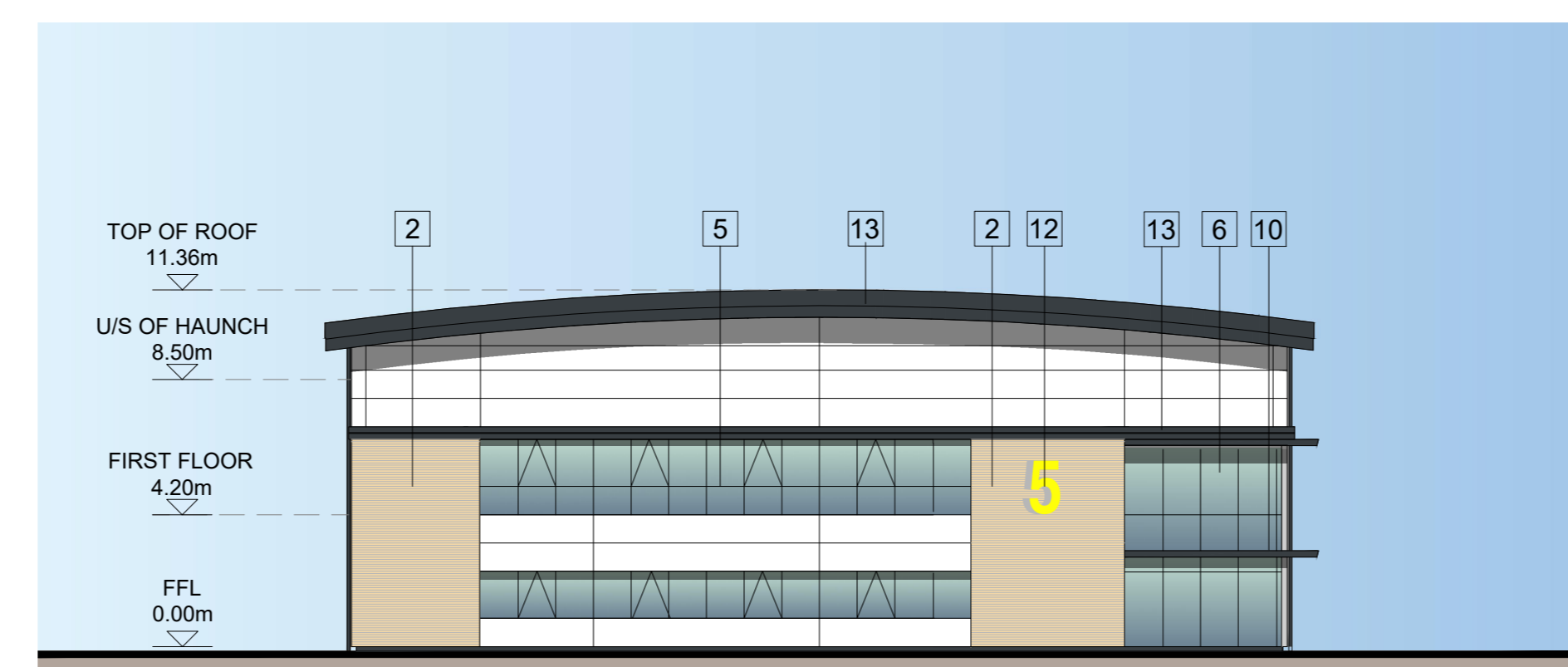
- MATERIALS KEY
- ① PROFILED ROOF CLADDING (GOOSEWING GREY RAL 7038)
  - ② BRICKWORK
  - ③ HORIZONTAL ARC PROFILE CLADDING (METALLIC SILVER RAL 9006)
  - ④ MICRO-RIB CLADDING (WHITE RAL 9010)
  - ⑤ ALUMINIUM FRAMED WINDOWS (ANTHRACITE RAL 7016)
  - ⑥ ALUMINIUM FRAMED DOUBLE ENTRANCE DOORS AND FULL HEIGHT GLAZING (ANTHRACITE RAL 7016)
  - ⑦ LOADING BAY DOORS (ANTHRACITE RAL 7016)
  - ⑧ STEEL PERSONNEL DOORS (ANTHRACITE RAL 7016)
  - ⑨ STEEL BOLLARD
  - ⑩ MAIN ENTRANCE BRISE-SOLEIL
  - ⑪ SIGNAGE ZONE, INDICATIVE
  - ⑫ ALUMINIUM UNIT NUMERAL
  - ⑬ FLASHING (ANTHRACITE RAL 7016)
  - ⑭ RAINWATER PIPE (ANTHRACITE RAL 7016)



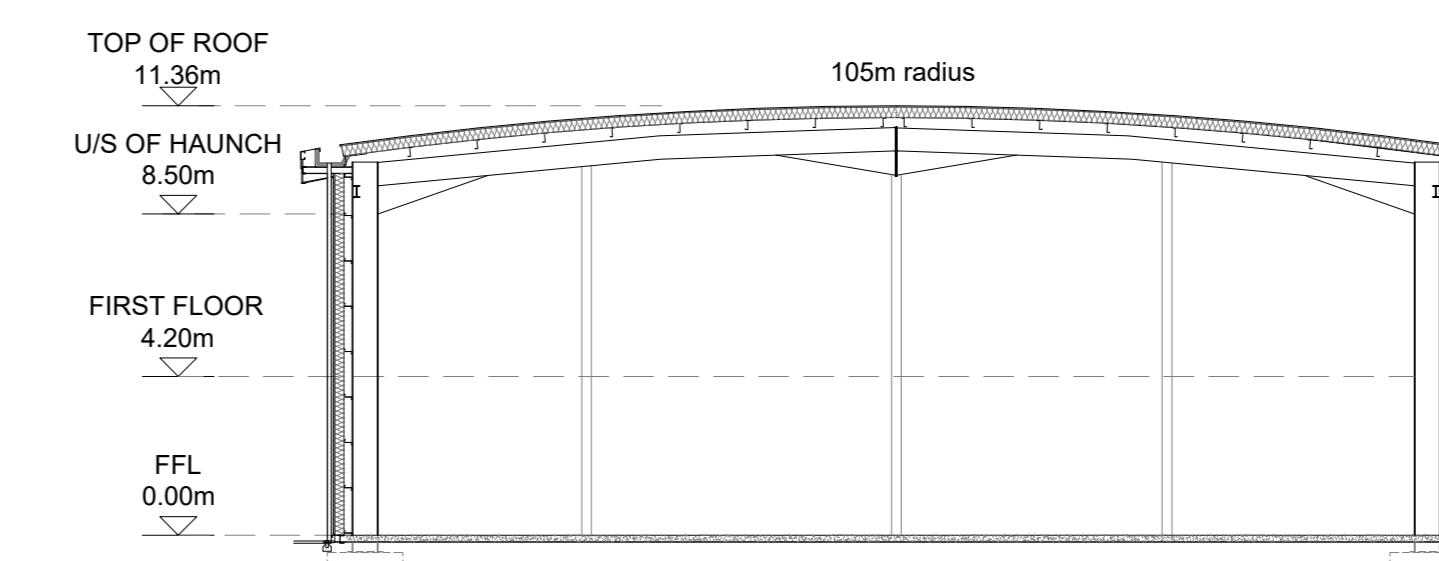
SOUTHERN ELEVATION



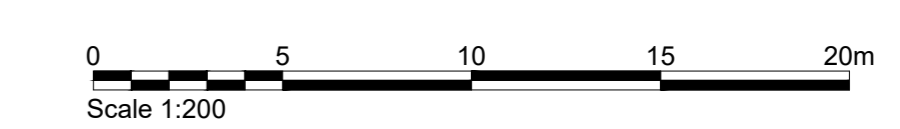
WESTERN ELEVATION



EASTERN ELEVATION



TYPICAL CROSS SECTION



Client:  
 XLB PROPERTY & PATRON HOOK LTD



Project:  
 BARTLEY WOOD BUSINESS PARK, HOOK

12 Warren Yard,  
 Warren Park,  
 Milton Keynes,  
 MK12 2BW  
 01889 389248  
 info@prcgroup.com  
 www.prcgroup.com

Drawing Title:  
 UNITS 5-8  
 PROPOSED ELEVATIONS & SECTION

Scale @ A0: 1:200  
 Checked by: ME  
 Date: MAY 21

Stage: PL 122  
 Drawing No: B  
 Rev: B

Issue Status:  
 Construction  Preliminary   
 Information  Approval   
 Tender

Offices:  
 Working London  
 Milton Keynes  
 Warsaw