

# 100 BROOK DRIVE 2,166-11,363 SQ FT



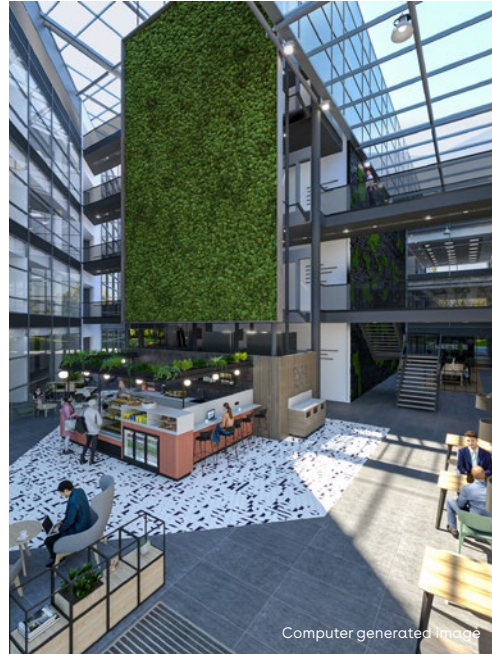
**GreenPark**   
a mapletree property

# 100 BROOK DRIVE

100 Brook Drive is a lakeside corporate headquarters which offers maximum impact. It's laid out neatly over four storeys around a full-height atrium.

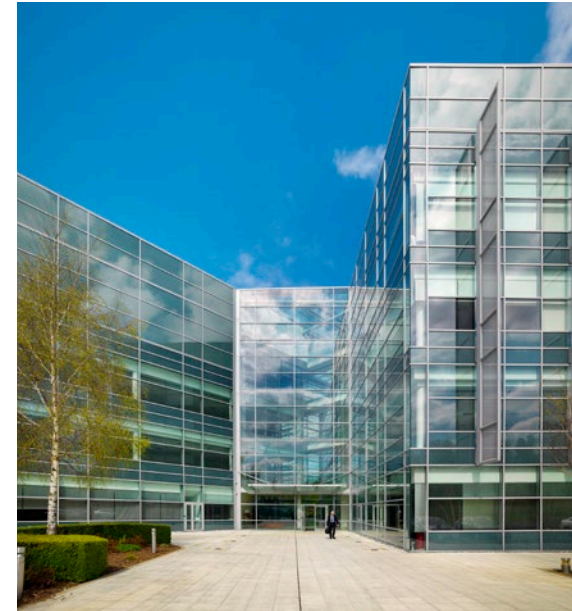
The building is available for multi-let and benefits from great on-site amenities.

The reception and atrium are currently being refurbished to offer a brand new entrance, café and break-out spaces.



## SPECIFICATION INCLUDES

- Four pipe fan coil air conditioning system
- Fully accessible raised floors - 450mm void
- Finished floor to ceiling height 2.6m
- Suspended ceiling
- On-site car parking
- Showers and bike racks
- Three x 13 person glass scenic lifts
- One goods lift
- Manned reception
- Imposing full height atrium
- On-site coffee and light snack service point
- 24 hour security on the Park
- EPC - E (117)



# AVAILABLE SPACE



Schedule of availability		sq ft	sq m	Parking
Ground floor	North Wing B	5,357	498	23
	South Wing	3,840	357	16
	West Wing	2,166	201	9
<b>Total</b>		<b>11,363</b>	<b>1,056</b>	<b>48</b>

Current occupiers of 100 Brook Drive



For indicative purposes only. Not to scale.

