



GATWICK
INTERNATIONAL
DISTRIBUTION CENTRE

2,995 sq ft




TO LET

**REFURBISHED LOGISTICS & TRADE
COUNTER WAREHOUSE UNIT**
UNIT 9 : 2,995 SQ FT (278.24 SQ M)

COBHAM WAY | CRAWLEY | RH10 9RX

GIDC.CO.UK

 hungry.highs.intro



DESCRIPTION

GIDC comprises a substantial estate of 29 modern units arranged in six terraces. Unit 9 is of concrete portal frame construction with part profile steel cladding and part brick elevations under a pitched roof with translucent roof panels. The Unit has been fully refurbished.



COMpletely REFURBISHED



6.9m MIN EAVES HEIGHT



LEVEL LOADING DOOR



ON SITE PARKING



LED LIGHTING



3 PHASE POWER



PROMINENT LOCATION



FAST ACCESS TO M23



CLOSE TO GATWICK AIRPORT



9

UNIT 9	SQ FT	SQ M
OFFICE	432	40.13
WAREHOUSE	2,563	238.11
TOTAL	2,995	278.24

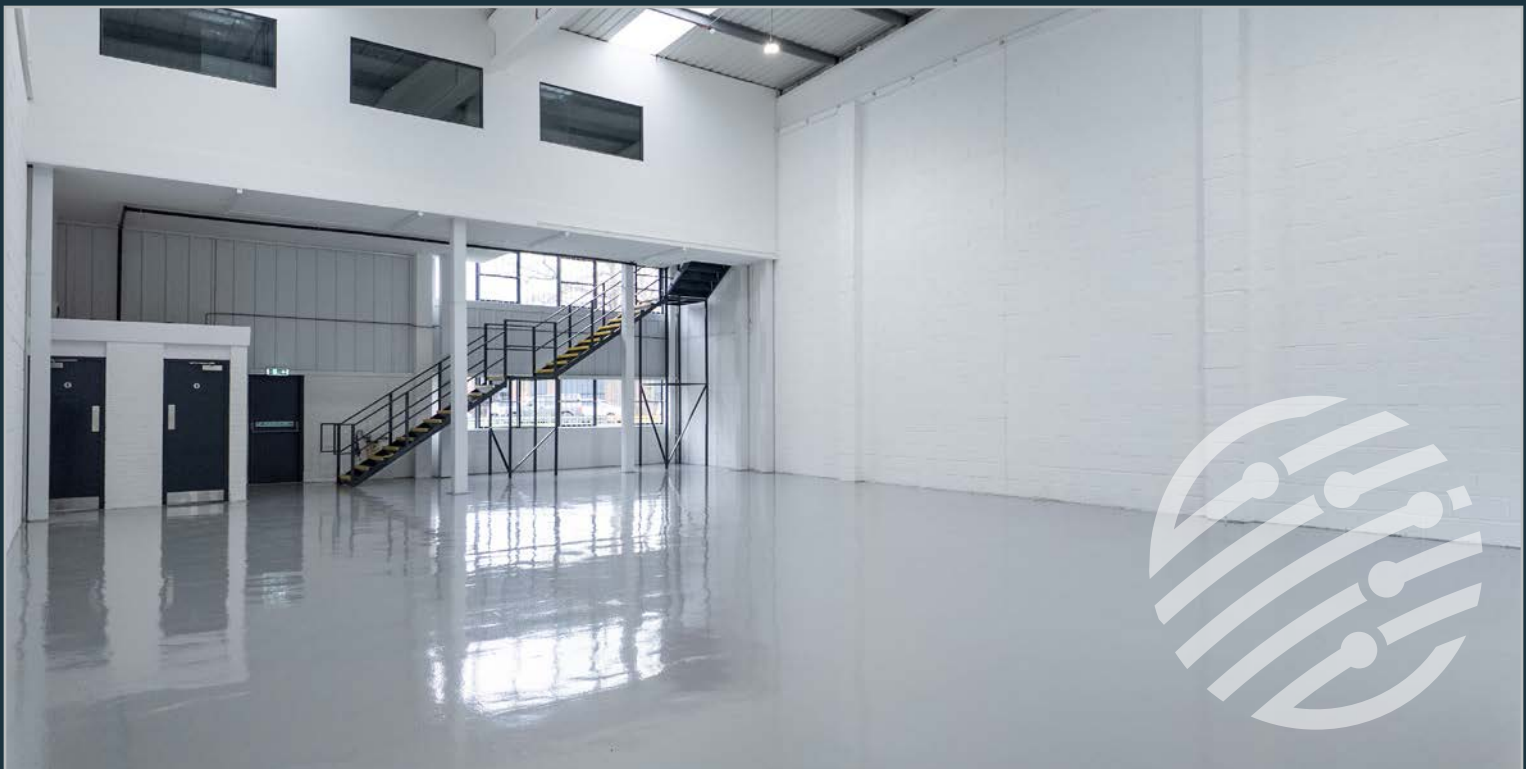
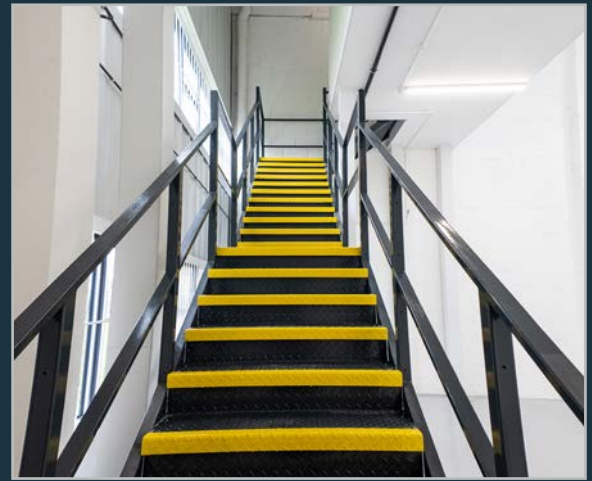
ROAD

M23 J10	2.2 miles	5 mins
M23 J9	4.0 miles	10 mins
M23/M25 J7	10.8 miles	15 mins
Gatwick Airport	2.7 miles	7 mins
Three Bridges Station	1.9 miles	7 mins
Crawley Town Centre	3.0 miles	12 mins

RAIL

Three Bridges	4 mins
East Croydon	15 mins
London Bridge	29 mins
London Victoria	31 mins
Brighton	26 mins
Crawley	9 mins

GATWICK
INTERNATIONAL
DISTRIBUTION CENTRE



Michael Deacon-Jackson
E: mdj@ftdjohns.co.uk
T: 07939 136 295

Harry Deacon-Jackson
E: hdj@ftdjohns.co.uk
T: 07907 483 182



Edward Thomason
E: et@tlre.co.uk
T: 07818 065 276

Paul Londra
E: pl@tlre.co.uk
T: 07779 269 290

Misrepresentation Act: Every care has been taken in the preparation of these details, however any intending tenant should satisfy themselves of the correctness of each statement contained herein. They are expressly excluded from any contract. All measurements and distances are approximate. VAT may be applicable to rent/price quoted.

DMA March 2026