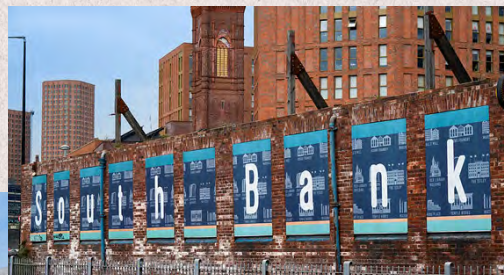


SOUTH BANK - LEEDS

TWO CITY WALK

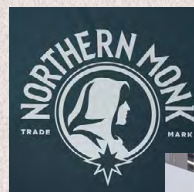




WALK ON THE SOUTH SIDE

Located on the South Bank of Leeds, 2 City Walk is a landmark building, undergoing comprehensive refurbishment to provide Grade A office accommodation for the future.

With unrivalled connectivity by road and rail and a provision of amenities on the doorstep, 2 City Walk provides an ideal business location.



SPLIT FLOORS FROM 5,119 - 15,914 SQ FT



UNDERGOING
REFURBISHMENT
COMPLETION Q3 2025



SOUTH BANK
LOCATION



LEEDS RAILWAY
STATION
8 MIN WALK



STRONG ESG
CREDENTIALS
(EPC B)



CONTEMPORARY WELCOME AREA

STEP INTO THE NEW

2 City Walk is undergoing an extensive refurbishment to the reception and common areas.

The remodelled reception will deliver a high quality arrival experience for both occupiers and clients.



REDESIGNED 1ST FLOOR LOBBY



RE-MODELLED RECEPTION SPACE

TWO CITY WALK

AIRE PARK

CROWN POINT

ASDA HOUSE

LEEDS CITY OFFICE PARK

EMBANKMENT

RAILWAY STATION

BRIDGEWATER PLACE

VICTORIA PLACE

GRANARY WHARF

THE MINT

TEMPLE LEEDS

GLOBE POINT

MARSHALL'S MILL



M621

1 MIN DRIVE TO
M621 JUNCTION 3

8 MIN WALK TO
LEEDS RAILWAY STATION



2.8M FLOOR TO
CEILING HEIGHTS



150MM RAISED
ACCESS FLOORS



REFURBISHED
RECEPTION WITH
FULL HEIGHT
GLAZED ATRIUM



26 ON-SITE
CAR PARKING
SPACES



3X 8 PERSON
PASSENGER LIFTS



SHOWER
FACILITIES



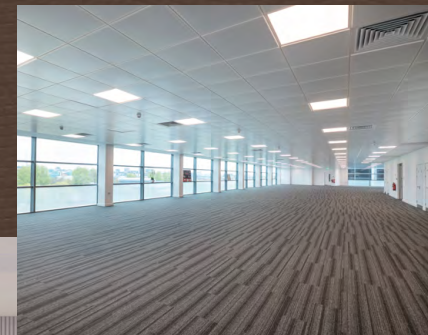
4 PIPE FAN COIL
AIR CONDITIONING



CYCLE
STORAGE



MODERN WC
FACILITIES



SET TO A HIGH
SPECIFICATION

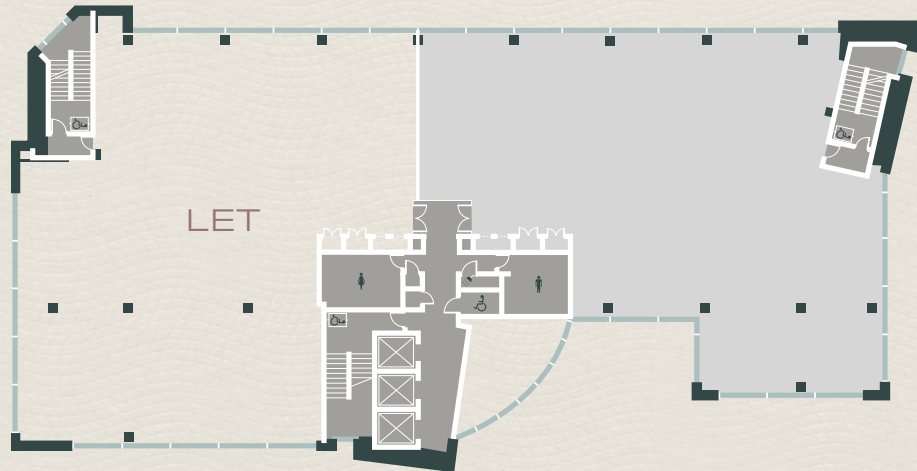


SHAPE YOUR SPACE

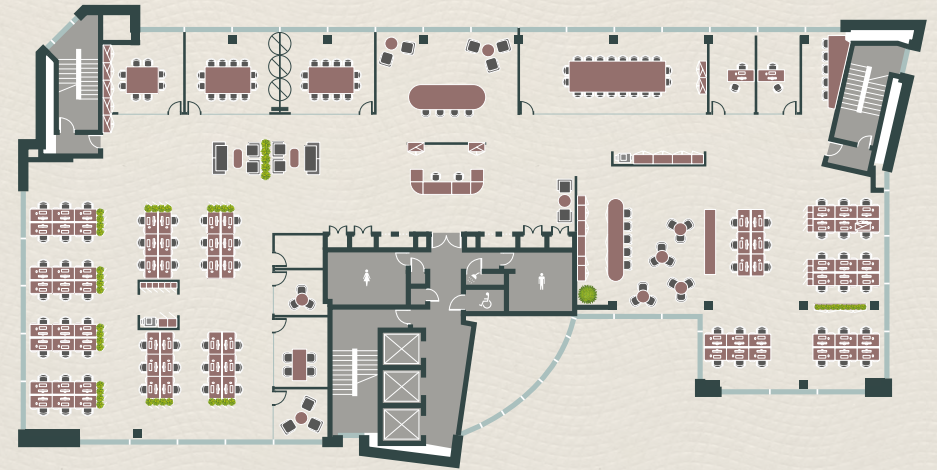
**TWO
CITY
WALK** SOUTH BANK
LEEDS
LS11 9AR

FLOOR	SQ FT	SQ M
Third (Suite B)	5,119	476
Fourth	10,795	1,003
Total	15,914	1,479

THIRD FLOOR –
SPLIT PLAN



TYPICAL FLOOR –
SPACE PLAN



78 workstations / 7 meeting rooms / 2 private offices / casual meet room /
reception area / business lounge / 2 print hubs / kitchen & diner / tea point

IN GOOD COMPANY

City Walk puts you just minutes from Leeds Station, a short stroll that connects you to the region and beyond. With direct rail links to Manchester, London, and key business hubs, commuting is effortless and client meetings feel closer.

On your doorstep, you'll find everything from artisan coffee spots and after-work bars to gyms, green spaces, and lunchtime favourites.

- 1 Crown Point
- 2 Northern Monk
- 3 The Midnight Bell
- 4 The Cross Keys
- 5 Water Lane Boathouse
- 6 Bake
- 7 Anytime Fitness
- 8 Tesco Express
- 9 Clayton Hotel
- 10 Fazenda



TWO CITY WALK
SOUTH BANK
LEEDS
LS11 9AR



TWO CITY WALK

VIEWINGS

For further information or to arrange a viewing please contact our joint letting agents.

EPC

The property has an Energy Performance Certificate rating of band B (47).

TERMS

The accommodation is available by way of a new effective Full Repairing and Insuring lease for a term of years to be agreed. Further information on request.

VAT

All prices/rents are deemed to be exclusive of VAT.

LEGAL COSTS

For the avoidance of doubt each party will be responsible for their own legal costs incurred in the preparation and completion of the legal documentation.



0113 244 6440

property.jll.co.uk

Sam Jamieson

sam.jamieson@jll.com
07385 411 183

Emma Scutt

emma.scutt@jll.com
07704 672 838

**Lambert
Smith
Hampton**

0113 245 9393

Matt Procter

mprocter@lsh.co.uk
07514 311 590

Richard Corby

rcorby@lsh.co.uk
07774 652 413

IMPORTANT NOTICE RELATING TO THE MISREPRESENTATION ACT 1967 AND THE PROPERTY MISDESCRIPTION ACT 1991 (REPEAL) ORDER 2013
JLL and Lambert Smith Hampton on their behalf and for the sellers or lessors of this property whose agents they are, give notice that: (i) The Particulars are set out as a general outline only for the guidance of intending purchasers or lessees, and do not constitute, nor constitute part of, an offer or contract; (ii) All descriptions, dimensions, references to condition and necessary permissions for use and occupation, and other details are given in good faith and are believed to be correct, but any intending purchasers or tenants should not rely on them as statements or representations of fact, but must satisfy themselves by inspection or otherwise as to the correctness of each of them; (iii) No person employed by JLL and Lambert Smith Hampton has any authority to make or give any representation or warranty in relation to this property. Unless otherwise stated prices and rents quoted are exclusive of VAT. The date of this publication is September 2025.