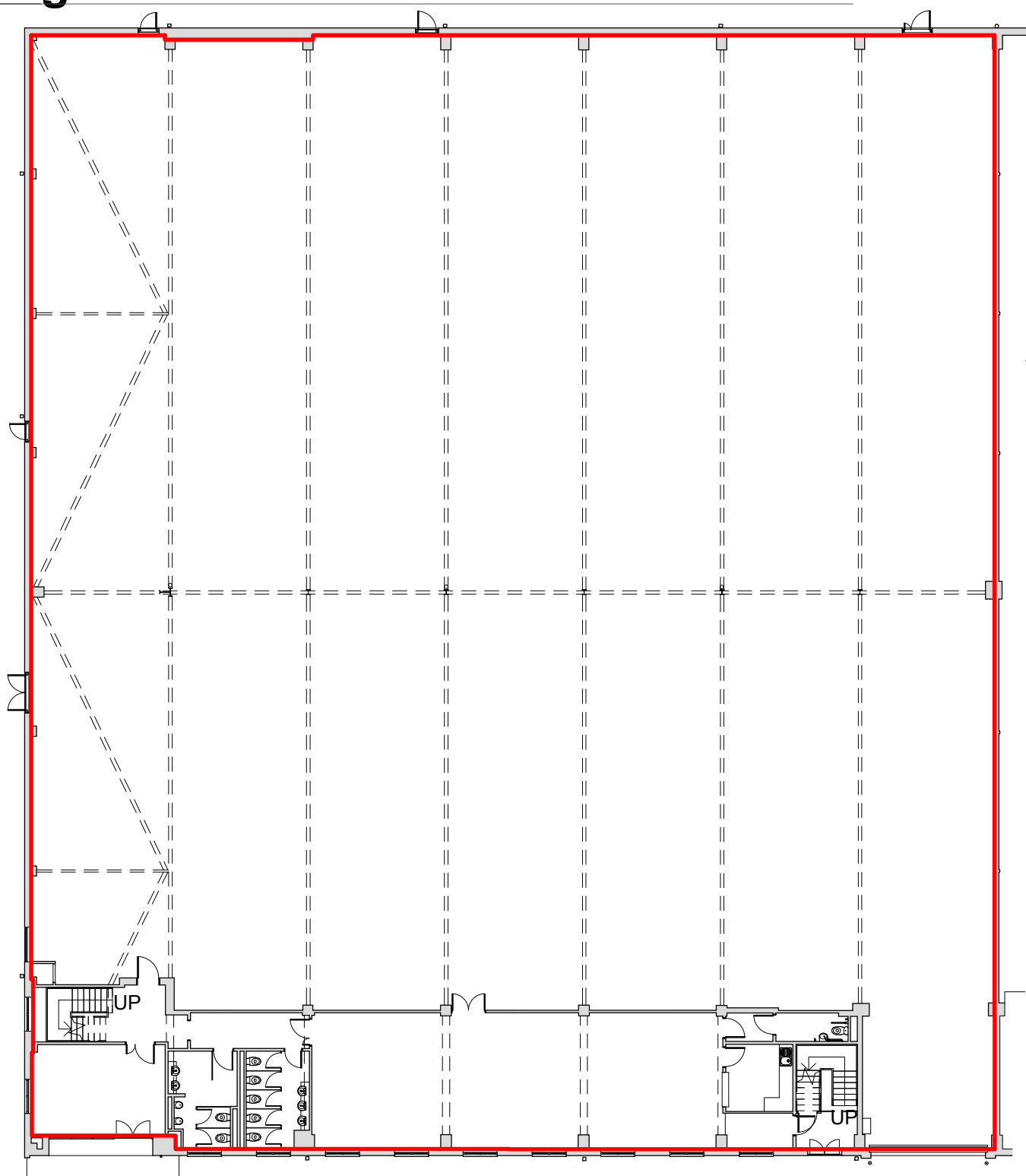


1 unit 1 ground floor

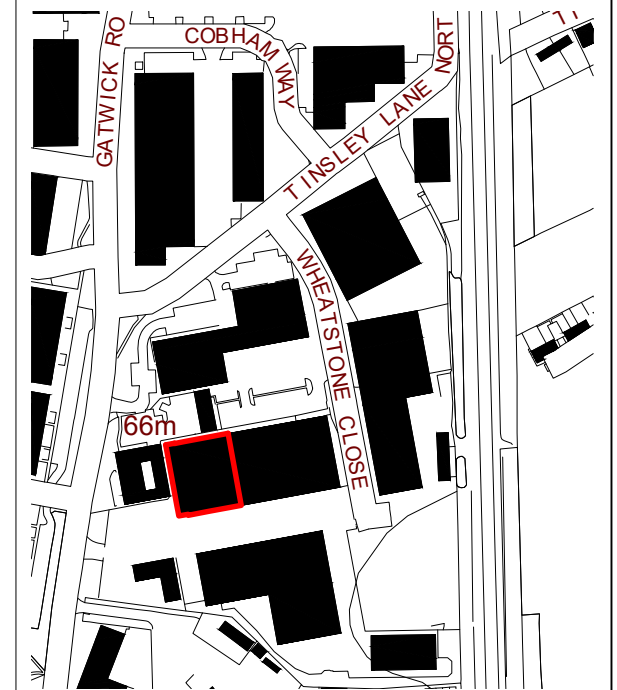
1 : 250



GIA calculation:

ground floor	2,025.12 m ²	21,798.2 ft ²
first floor	216.89 m ²	2,334.6 ft ²
total:	2,242.01 m²	24,132.8 ft²

LOCATION PLAN



SCALE 1 : 5,000

PROJECT

Units 1&2 Sterling Park Industrial Estate
(Change of Use)

ADDRESS

Sterling Park Industrial Estate,
Gatwick Road,
Crawley,
West Sussex RH10 9QT

TITLE

GIA Unit 1

CLIENT

Parham Investment Ltd

DRAWN BY

DH

CHECKED BY

NG

DATE

08.06.26

SCALE (@ A3)

1 : 250

PROJECT NO.

P18082

DRAWING NO.

A502

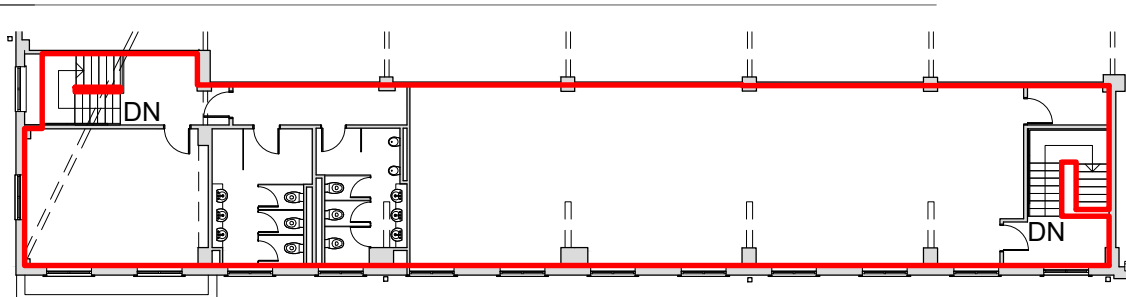
REVISION

A

REV	DESCRIPTION	DATE
	Initial Release	07.05.25
A	GIA Calculation Amended	08.06.26

2 unit 1 first floor

1 : 250



BLACKBOX
BEECH LANE
WILMSLOW
SK9 5ER
T: 01625 444 759
info@sitescanltd.com
www.sitescanltd.com

