

UNDER REFURBISHMENT WITH NEW
INSULATED PROFILE METAL SHEET ROOF



Unit 18 South Hampshire Industrial Park

Eddystone Road, Totton, Hampshire SO40 3SA

TO LET | 664.4sq m (7,147 sq ft) End Terrace Warehouse / Industrial Unit With Mezzanine



HELLIER
LANGSTON

Description

The property comprises an end of terrace steel portal frame industrial unit underneath a new profile metal sheet insulated roof with intermittent daylight panels.

Externally the unit has part brick part clad elevations to the front, rear and side elevations. Loading and parking are via a concrete forecourt with approximately 6/8 cars double parked spaces.

Internally a ground floor lobby leads to a staircase to a showroom or 1st floor office. This is currently open to the roof with a single partitioned office with suspended ceiling. This could be enclosed again if required. Linking to this area is an additional mezzanine floor within the warehouse with a separate staircase to the ground floor.

The lobby on the ground floor also leads through to 3 large rooms which can be used as offices, stores, showroom or kitchen/canteen. There are separate male and female WC blocks.

The warehouse is clear span and lit with LED lighting and has a large mezzanine floor.



Specification (Under Refurbishment
Available September 2025)

Ground floor

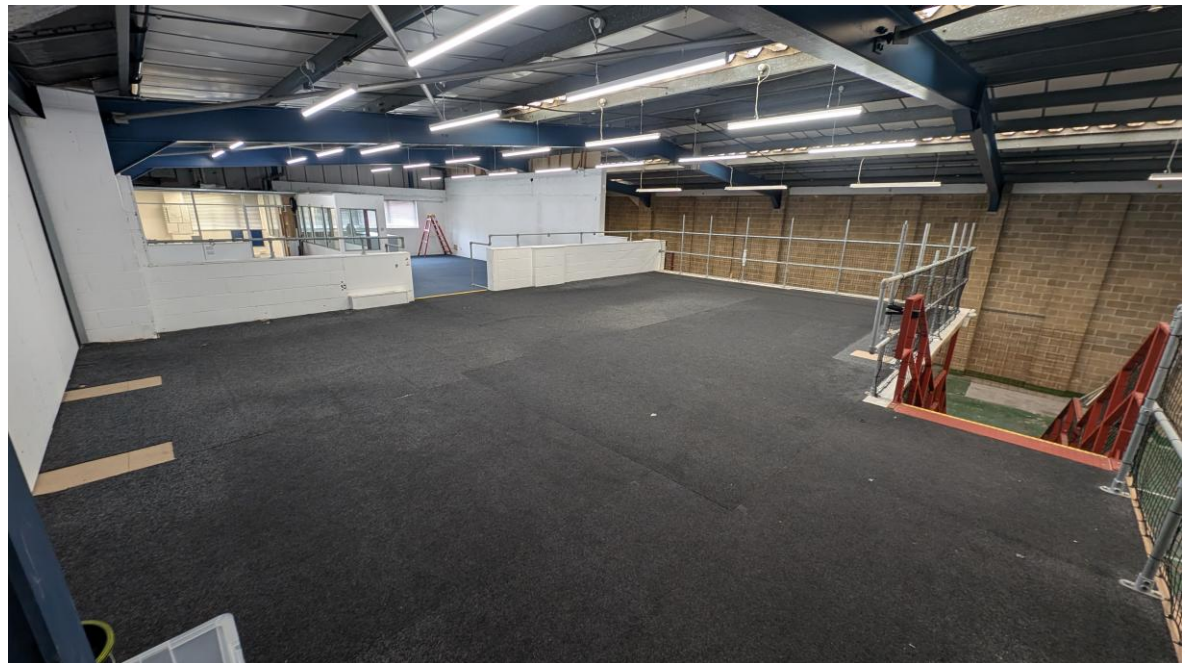
- Ridge height 6.80m
- Eaves height 5.78m
- Haunch height 5.01m
- Concertina sliding loading door 5.52m wide by 4.99m high
- New profile metal sheet insulated roof
- intermittent day light panels
- 3 phase 100amp electric supply
- Warehouse LED lights
- Ground floor male and female WC blocks

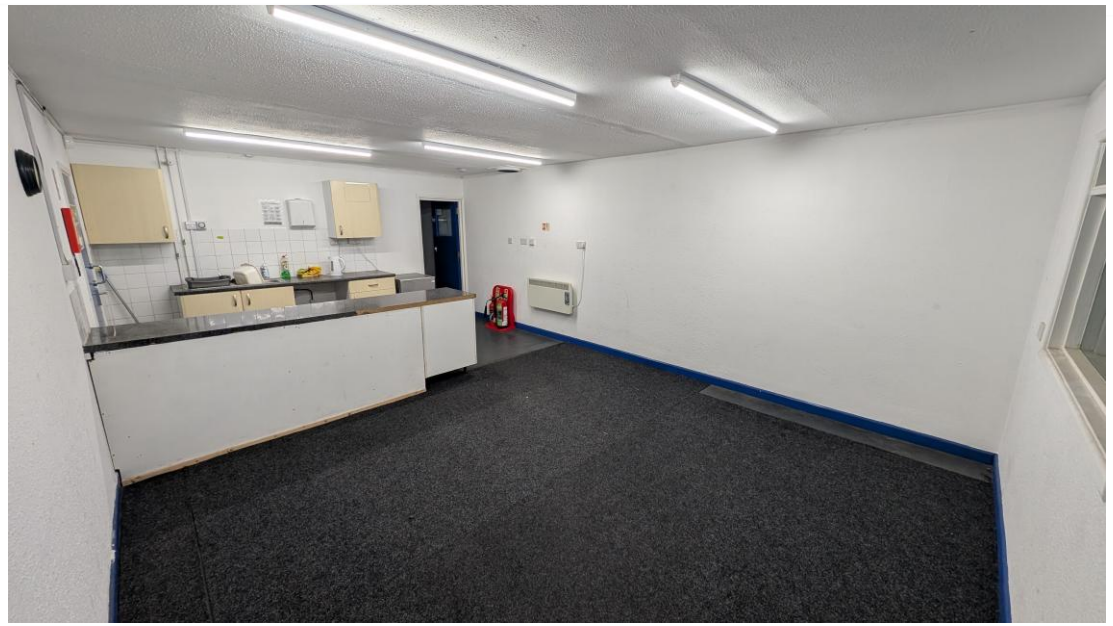
1st Floor

- Open plan showroom/office
- Single partitioned office with suspended ceiling and LED lights
- Roof mounted LED lights
- Carpets
- Single glazed windows

External

- Concrete forecourt for parking, loading and unloading





Accommodation

The premises have been measured to Gross Internal Area as follows:

	Sq M	Sq Ft
Warehouse and GF ancillary areas	538.77	5,799
First floor office / showroom	125.29	1,348
Total	664.06	7,147
Mezzanine	85.70	922

Business Rates

According to the Valuation Office Agency website the Rateable Value is £50,000.

Estate Charge

We understand that there is a service charge for the estate, information on application.

EPC

TBC under refurbishment

Terms

The premises are available by way a new Full Repairing and Insuring Lease

Rent

£75,000 per annum exclusive without mezzanine floor

£79,000 per annum exclusive with mezzanine floor

Viewing

Strictly by appointment with the sole agents.

AML

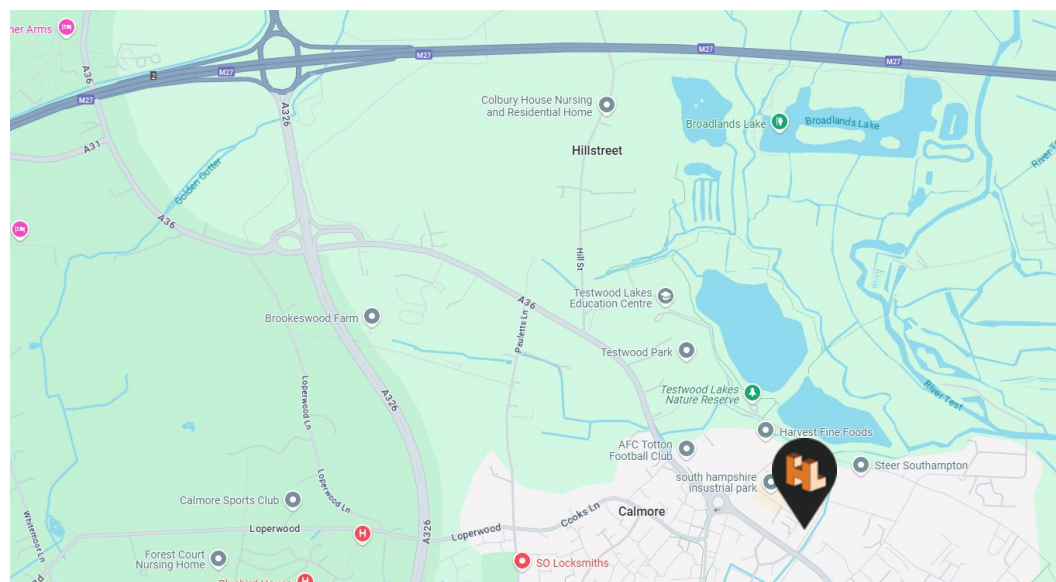
In order to comply with Anti-Money Laundering Regulations 2017 (as amended) and the Proceeds of Crime Act 2002, Hellier Langston are required to identify all prospective purchasers and tenants.

Code for Leasing Business Premises

In England and Wales the Code for Leasing Business Premises, 1st edition, strongly recommends that any party entering into a business tenancy or lease agreement takes professional advice from a surveyor or solicitor. A copy of the Code (1st edition, February 2020) can be found on the RICS website.

Location

The South Hampshire Industrial Park is part of the larger Calmore Industrial Estate. The unit is located on Eddystone Road and can be accessed from Stephenson Road or Brunel Road the main arterial route through the Estate. Calmore Industrial Estate is accessed via the A36 Salisbury Road which links to junction 2 of the M27 to the North and Totton Town Centre and Redbridge Road to the South.



Schedule an appointment

www.hlp.co.uk

T: 01329 220111

E: Fareham@hlp.co.uk

T: 02382 022 111

E: southampton@hlp.co.uk

Contact our agency team

Jason Webb

T: 07989 959 064

E: jason@hlp.co.uk

Matt Poppett

T: 07971 824 525

E: matt@hlp.co.uk

