

**NOTES**  
1. All fire doors must be tested to the criteria set out in BS 5839-1.  
2. All fire doors must be tested to the criteria set out in BS 5839-1.  
3. The fire door must be tested to the criteria set out in BS 5839-1.  
4. All fire doors must be tested to the criteria set out in BS 5839-1.

REV	DESCRIPTION	DATE
A	Lift & stairs amended	21.06.13
B	External wall amended	28.03.13
C	Bin store & stairs amended	29.05.13
D	Lift & stairs amended	21.06.13

<p><b>Purelife UK Ltd</b></p> <p>102 HIGH STREET HOUNSLOW MIDDLESEX TW3 1NH</p>		
<p><b>GROUND FLOOR FIRE PLAN AS PROPOSED</b></p>		
Job No.	064	
Date	JAN 2013	
Drawn By	RJS	
Checked By	SB	
Scale	1:50@A1	

**MEANS OF ESCAPE**

The maximum distance for single direction of escape is 18 metres and the maximum distance for two directions of escape is 25 metres. All escape routes are within protected shafts, with direct access to the outside, leading to a place of safety away from the building.

**EMERGENCY LIGHTING**

Emergency lighting to be provided in each compartment and all routes to final escape door. To be installed in accordance with BS5268 part 1.

**CONTAINMENT**

The minimum fire resistance for all elements of structure is 60 minutes.

**ELEMENTS OF STRUCTURE**

Each floor is a compartment floor. Each floor is divided into compartments.

**SUBDIVISION OF CAVITIES**

Compartment walls are continued to the underside of the floor above and in the case of the top floor, to the underside of the roof.

**EXTINGUISHMENT**

There are to be minimum of 2 number 9 litre water extinguishers for every 300sqm of floor space, or 1 on each floor.

**ACCESS AND FACILITIES FOR THE FIRE BRIGADE**

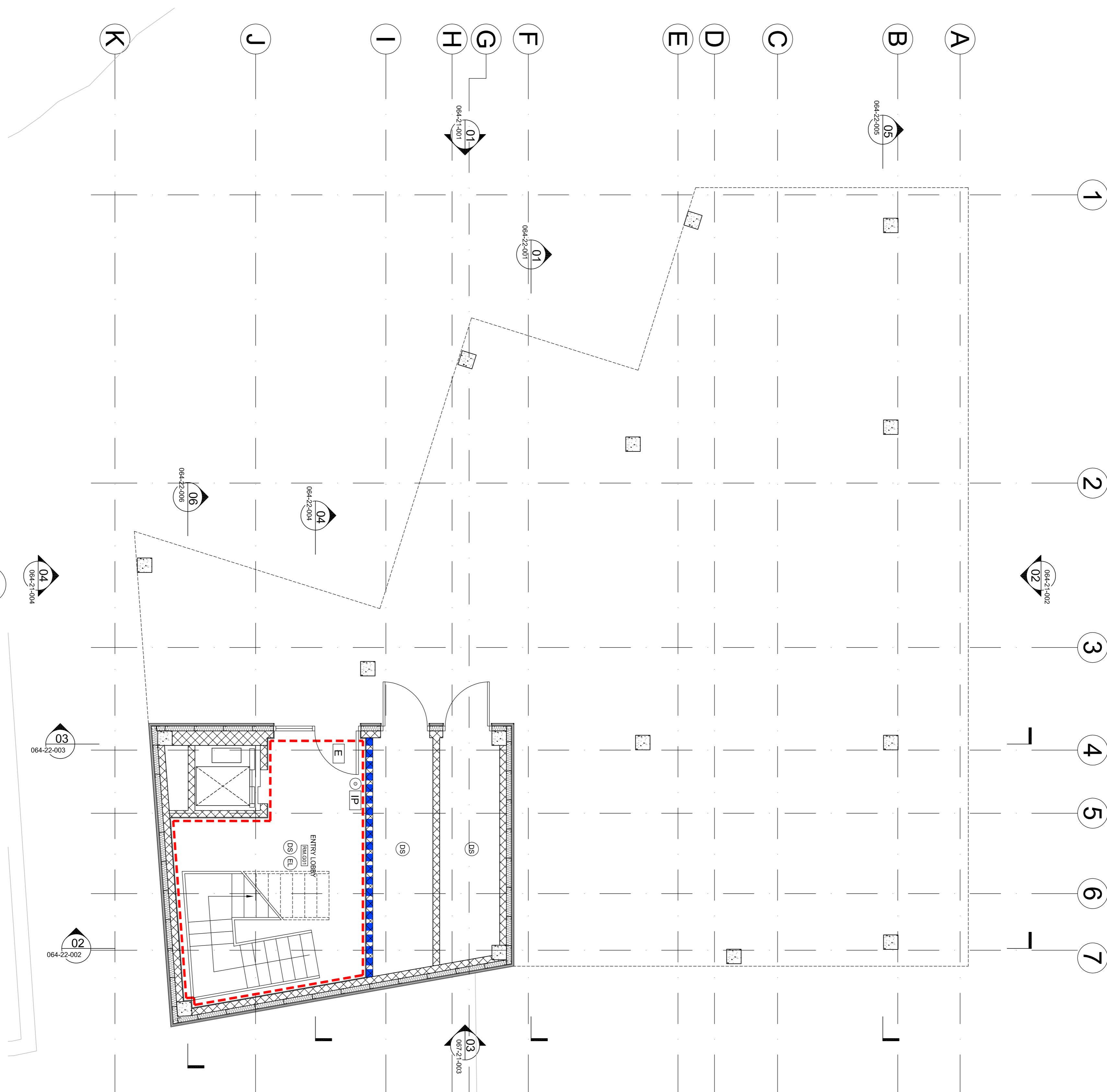
Access for pump appliances is available to within 45 metres of the building.

**COMMUNICATIONS**

Alarm and detection system to be Type L1 designed to comply with the guidance in BS5839-1:2002, part 1:2002 including provision of detection in roof spaces.

Sufficient, audible alarms to be positioned to provide '75(d)(b)' to the individual apartments. Alarm & detection system to be connected to remote monitored centre.

- (DH) Point type heat sensitive detectors to BS 5445
- (SD) Smoke sensitive detectors to BS 5446 (optional)
- (IP) Fire alarm indicator panel.
- (VP) Door fitted with vision panel size 750x200mm with 150mm head and landing edge margins located in hardwood frame. Hand made and retained by handwood batten.
- (EF) Door fitted with push pad or other emergency fastening with restriction in height 50mm high where appropriate
- (FS) Fire alarm sander
- (EL) Emergency lighting system min. 3 hrs duration non maintained & vent fluorescent unit linked to local lighting circuit to BS 5268 Part 1:2005.
- (E) Non illuminated wall mounted 'EXIT' or 'FIRE EXIT' sign 75mm high white letters on green background (directional).
- (FD30) 30 Minute fire resisting door
- (FD60) 60 Minute fire resisting door fitted with self close mechanism and combined intumescent strip/door smoke seal



**01 GROUND FLOOR PLAN**  
SCALE 1:50 @ A1

