



115 PARK STREET

MAYFAIR WI

FULLY FITTED OFFICE TO LET 1,152 SQ FT

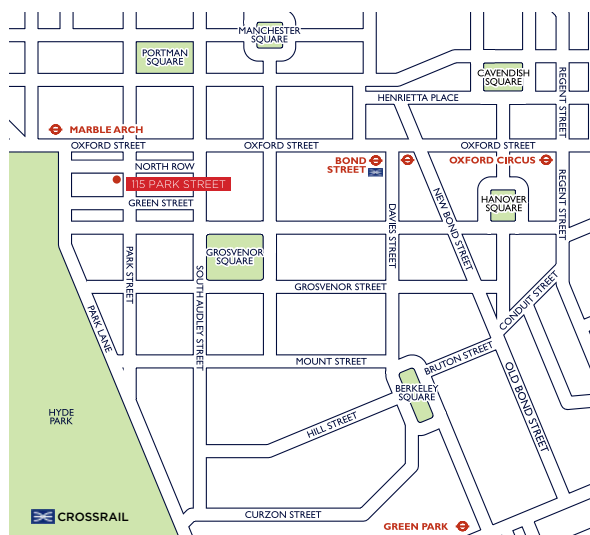
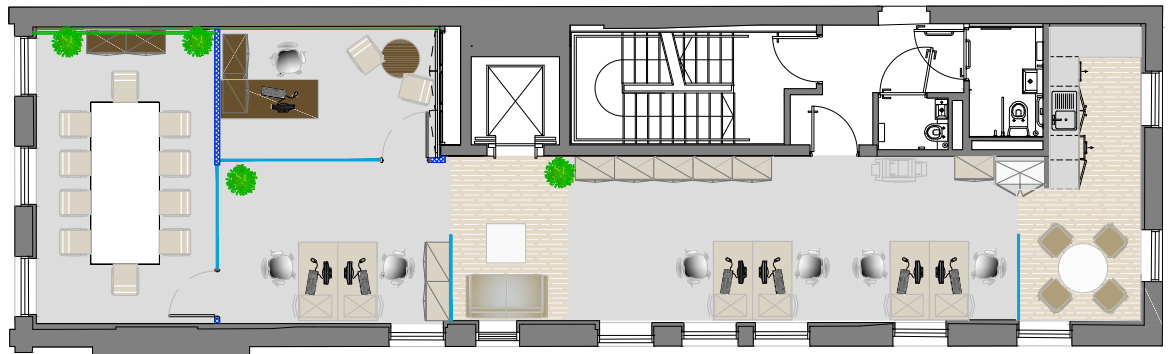


115 Park Street offers Grade A office space behind a period façade. The fully fitted plug and play 3rd floor has recently been refurbished with a kitchen and 10 person board room

AMENITIES

- VRF heating and cooling
- Metal tiled suspended ceilings
- Low energy fluorescent luminaires
- Raised floors
- Kitchen
- Video entry phone
- Shower
- 8 person passenger lift
- Commissionaire
- EPC Rating - E

3RD FLOOR LAYOUT



LOCATION

The building is situated in the north west corner of Mayfair, on the corner of Park Street and North Row. Marble Arch and Bond Street Underground Stations are within a short walk, providing easy access to the Central and Jubilee lines.

World class shopping as well as excellent restaurant facilities are unrivalled and the numerous bus routes of Park Lane and Oxford Street provide excellent connectivity across Central London.

TERMS

Flexible lease terms
Limited dilapidations

RENT

£110,000 per annum
(exclusive)

Viewings strictly by appointment
only through joint agents



Max Kemplen
mkemplen@savills.com
020 7409 8976

Mark Gilbert-Smith
mgsmith@savills.com
020 7409 5925



Daniella Sidoli
daniella.sidoli@eu.jll.com
020 7087 5905

George Reynolds
george.reynolds@eu.jll.com
020 7087 5651