

# 1-2 PRINCES COURT

LDN E1

UP TO 14,770 SQ FT OF FLEXIBLE OFFICE SPACE

## 1-2 PRINCES COURT

# SELF-CONTAINED & VERSATILE

The property comprises a cost-effective, self-contained building of approximately 14,770 sq ft arranged over 4 floors. Each floor benefits from a flexible layout and lift access, and the building includes 4 on-site car parking spaces.

The accommodation is highly adaptable to suit a wide range of business needs, with leasing options available either in its existing condition or customised and refurbished to tenant specifications, with landlord contributions available for improvements.



Floor	Spec	sq ft	sq m	Availability
3rd	Fully fitted	2,360	219	Available
2nd	Fully fitted	4,210	391	Available
1st	Fully fitted	4,300	399	Available
Ground	Fully fitted	3,900	362	Available
Total		14,770	1,371	



1-2 PRINCES COURT

## HIGHLIGHTS



Flexible space



4 car parking spaces



Cost effective



Self-contained building



Leasing options available



Excellent transport links



## 1-2 PRINCES COURT

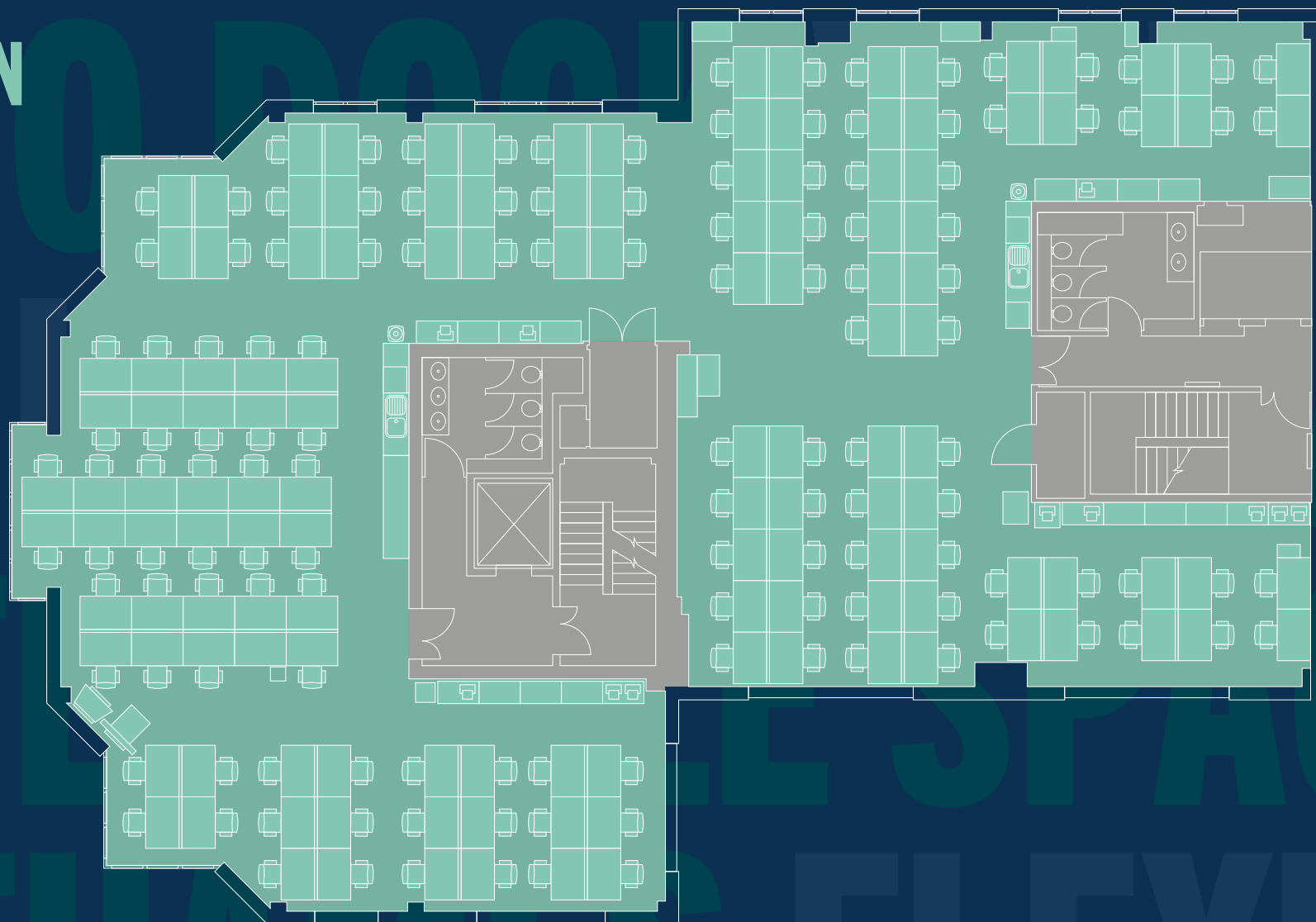
# TYPICAL FLOOR PLAN

4,210 SQ FT  
391.1 SQ M

137x Workstations

2x Teapoints

7x Print stations





## 1-2 PRINCES COURT

# CAFÉ'S, CULTURE & CONNECTIONS

Located in the heart of Wapping, 1-2 Princes Court is surrounded by an excellent range of amenities. From cultural events at Tobacco Dock to historic riverside pubs along the Thames, the area offers a rich local environment. Scenic Thames-side walks and nearby green spaces complement the lively mix of cafés, restaurants and pubs around St Katharine's Dock, with gyms and everyday conveniences within walking distance. Transport links via Wapping and Shadwell stations provide DLR and Overground services, offering swift connections to the City and Canary Wharf.



# 1-2 PRINCES COURT

LDN E1



---

Katie Sommer

07703 608316

[katie.sommer@jll.com](mailto:katie.sommer@jll.com)

Honor Dunning

07999 139511

[honor.dunning@jll.com](mailto:honor.dunning@jll.com)

Important notice relating to the Misrepresentation Act 1967 and the Property Misdescriptions Act 1991: (i) the particulars are set out as a general outline only for guidance of intending purchasers or lessees and do not constitute, nor constitute part of, an offer or contract (ii) all descriptions, dimensions, references to condition and necessary permission for use and occupation, and other details are given in good faith and are believed to be correct, but any intending purchasers or occupiers should not rely on them as statements or representations of fact, but must satisfy themselves by inspection or otherwise as to the correctness of each of them. January 2026

Marketing: Stuart Chapman Design