

Reimagined. Reconfigured. Revitalised.

Three Hundred

Bath Street

Glasgow G2 4JR

Situated at Charing Cross, where the West End meets Sauchiehall Street the building features the largest floor plate in town with column free, light-filled floors of up to 30,000 sq ft.



Rediscover

300 Bath St.



Street Appeal

Our new entrance revealed.

New Arrival

Greeted by our host.





Chat Room

Be welcomed in our lounge.

Lift Off

To our refitted workspaces.

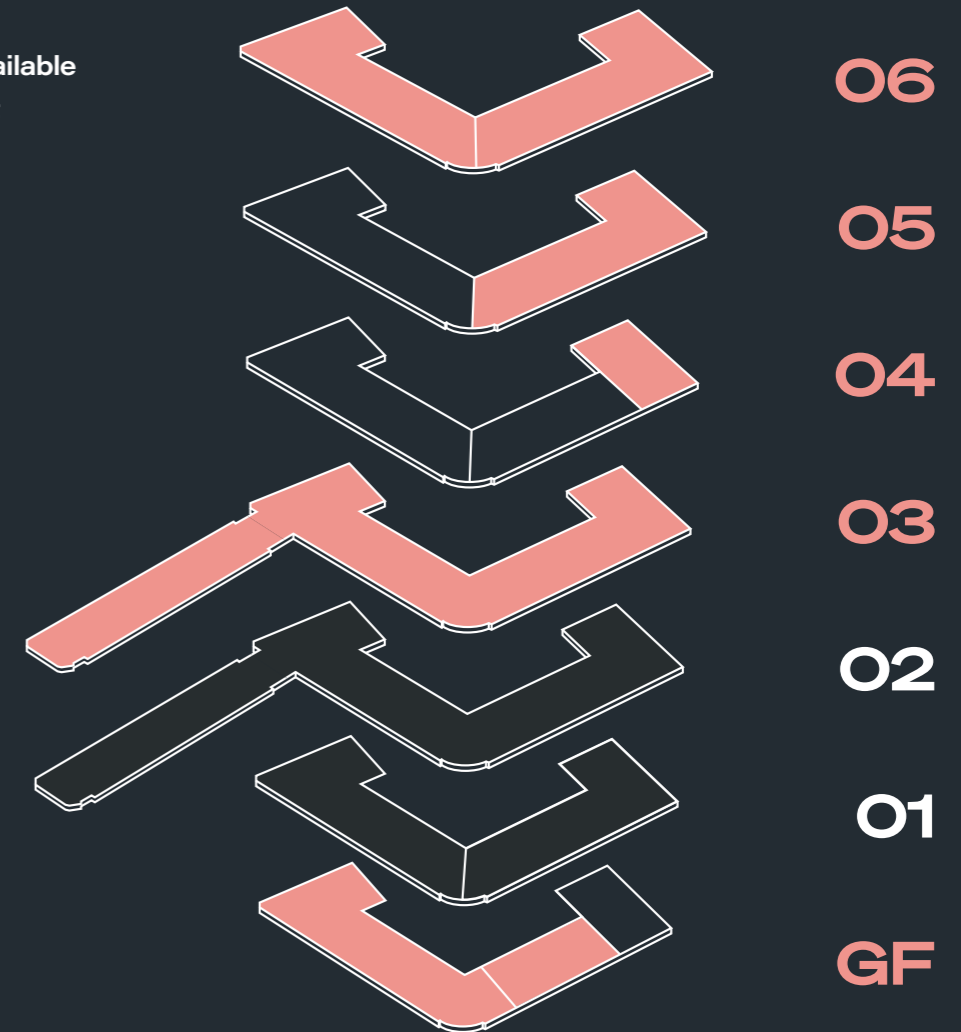


Availability

Floor	sq ft
06 West	11,150
06 East	8,944
05 West	Securigroup
05 East	10,446
04 West	Fairhurst
04 East Suite 1	Charles Scott & Partners
04 East Suite 2	3,815
03	29,375
02	Regus t/a Spaces
01 West	ESR Europe
01 East	University of Glasgow
GF West	9,285
GF East Suite 1	3,740
GF East Suite 2	Securigroup/Blueprint
Total	76,755

Secure parking spaces available

- Available
- Let

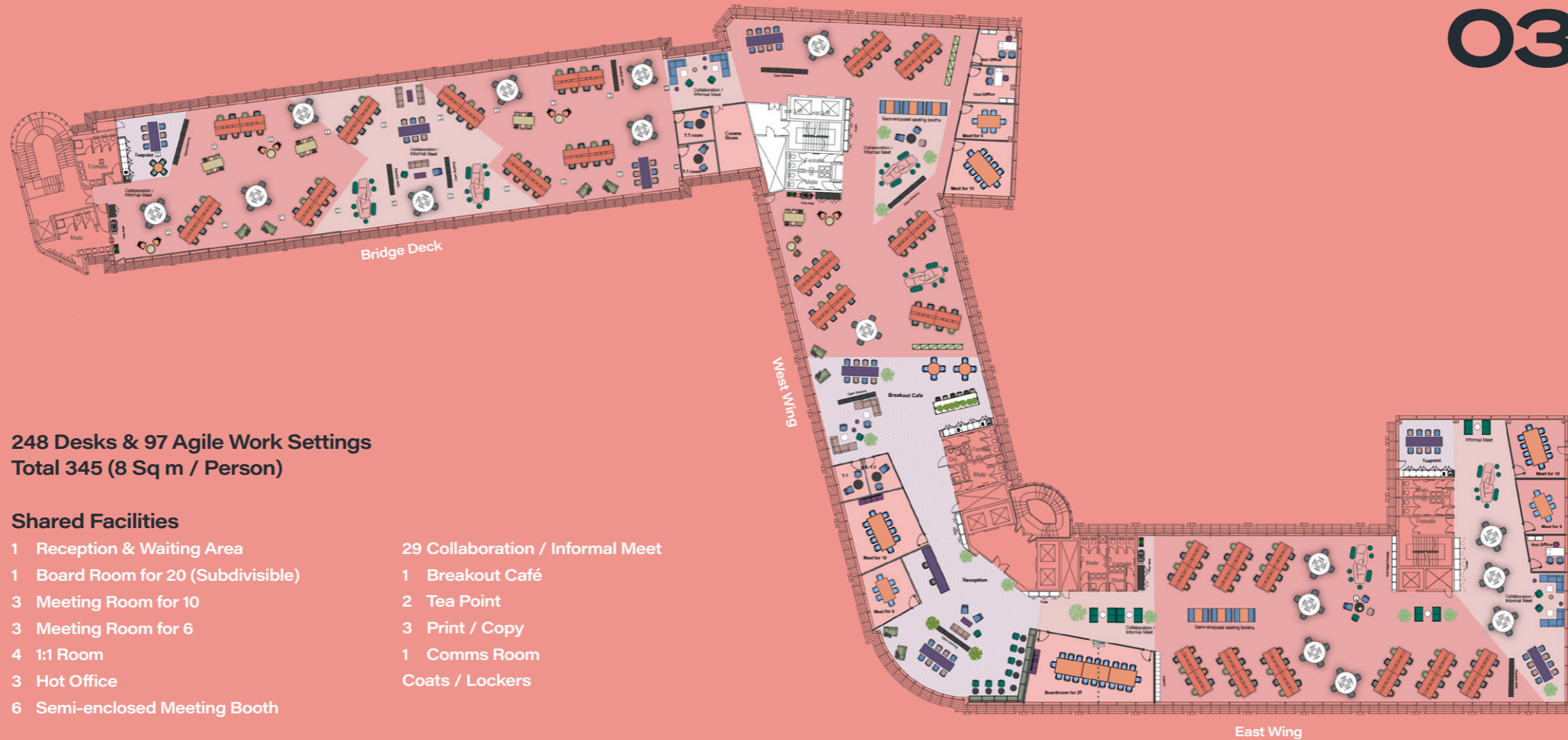


COLUMN

FREE

Custom Workspaces

03



248 Desks & 97 Agile Work Settings
Total 345 (8 Sq m / Person)

Shared Facilities

- | | |
|------------------------------------|----------------------------------|
| 1 Reception & Waiting Area | 29 Collaboration / Informal Meet |
| 1 Board Room for 20 (Subdivisible) | 1 Breakout Café |
| 3 Meeting Room for 10 | 2 Tea Point |
| 3 Meeting Room for 6 | 3 Print / Copy |
| 4 1:1 Room | 1 Comms Room |
| 3 Hot Office | Coats / Lockers |
| 6 Semi-enclosed Meeting Booth | |

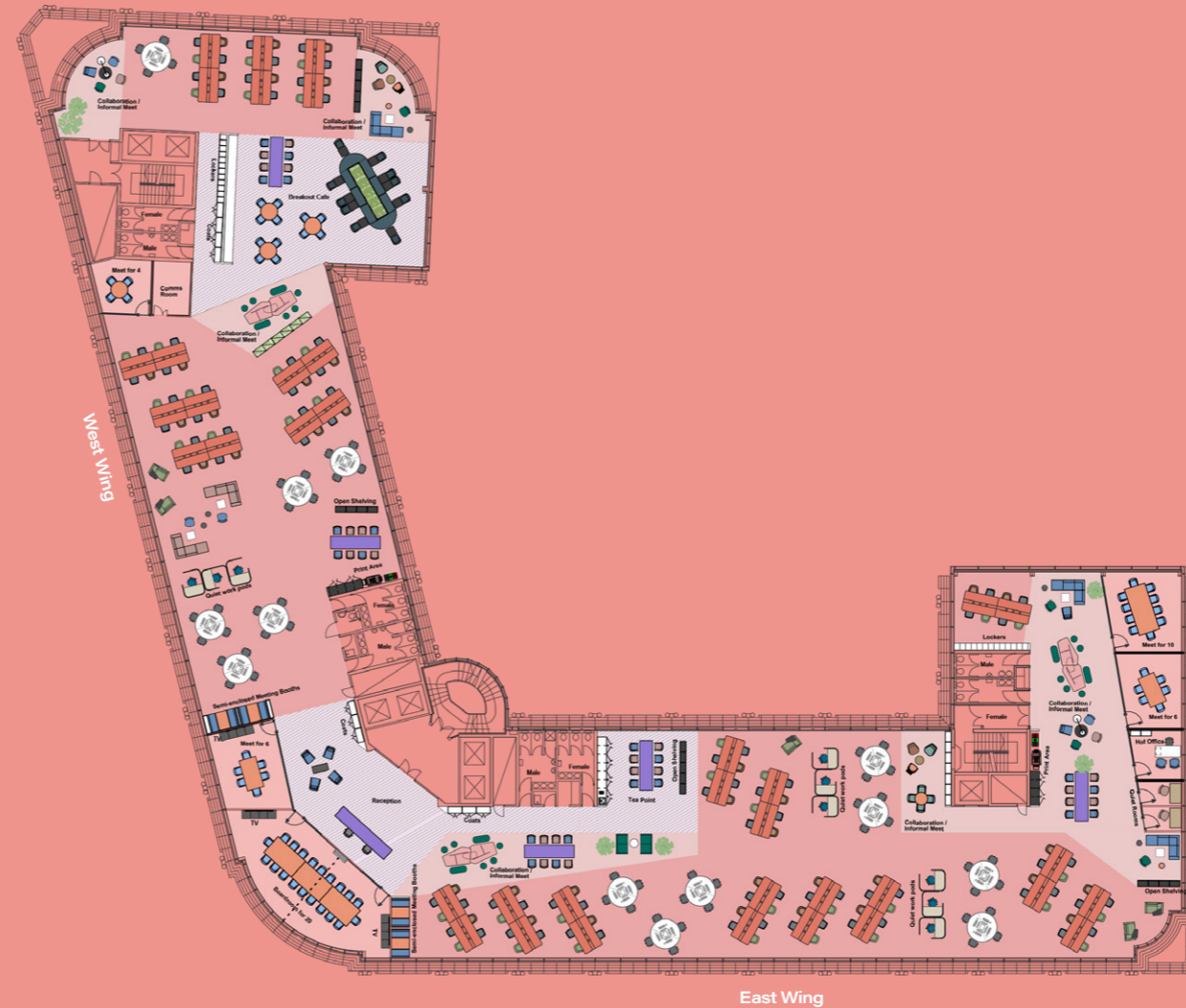
Custom Workspaces

06

213 Desks & 47 Agile Work Settings
Total 260 (8 Sq m / Person)

Shared Facilities

- 1 Reception & Waiting Area
- 1 Board Room for 20 (Subdivisible)
- 1 Meeting Room for 10
- 2 Meeting Room for 6
- 1 Meeting Room for 4
- 2 Quiet Room
- 1 Hot Office
- 9 Quiet Work Pod
- 4 Semi-enclosed Meeting Booth
- 10 Collaboration / Informal Meet
- 1 Breakout Café
- 1 Tea Point
- 2 Print / Copy
- 1 Comms Room
- Coats / Lockers





**Large column
free floor plates**



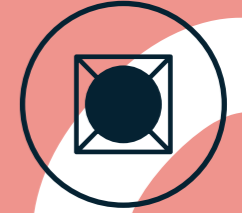
**Air
conditioning**



**Raised
access floor**



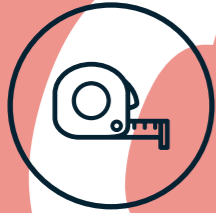
**Metal tiled
ceiling system**



**Recessed
LED lighting**

Specification

at a glance



**4m slab to
slab height**



**Accessible
toilet facilities**



**Seven
passenger lifts**



**BMS for optimum
services control**



EPC rating

Cycling to work or going for a run at lunchtime?

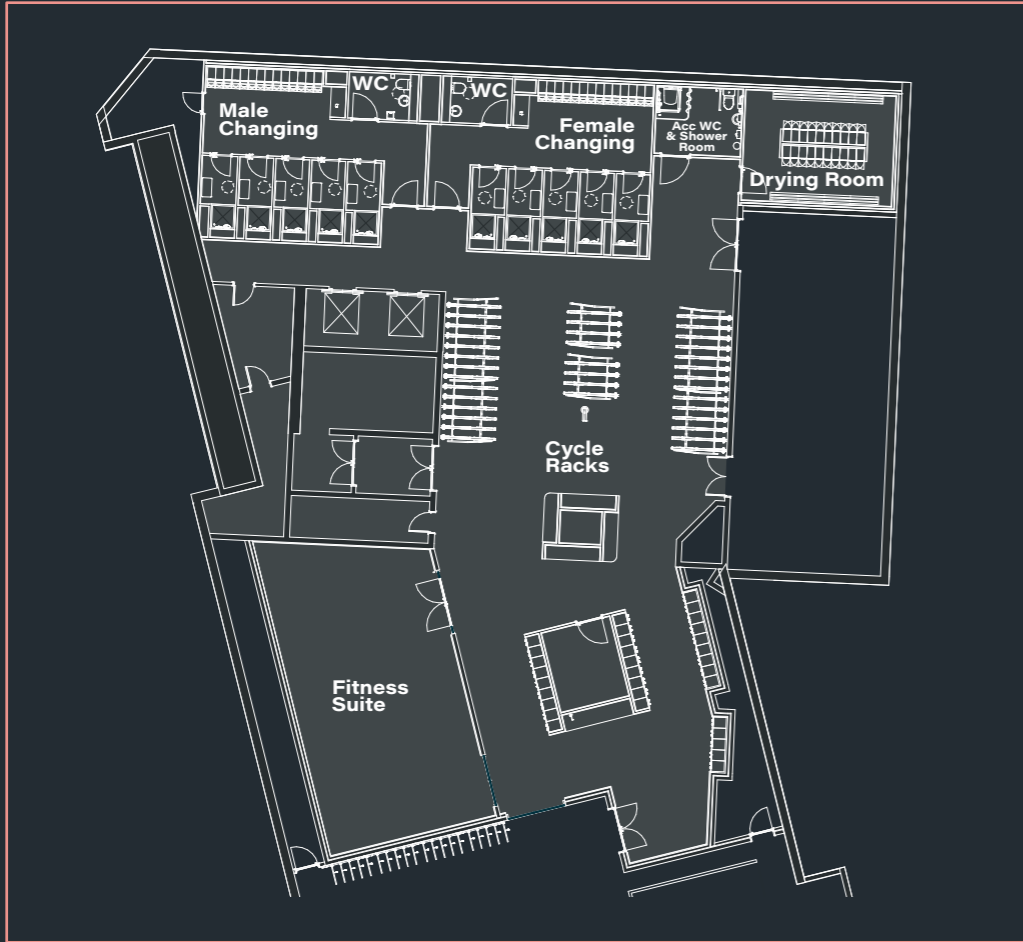
300 Bath Street has a new wellbeing amenity zone with a fully equipped gym, extensive accessible shower facilities, bike storage, lockers and a drying room.

Start your journey

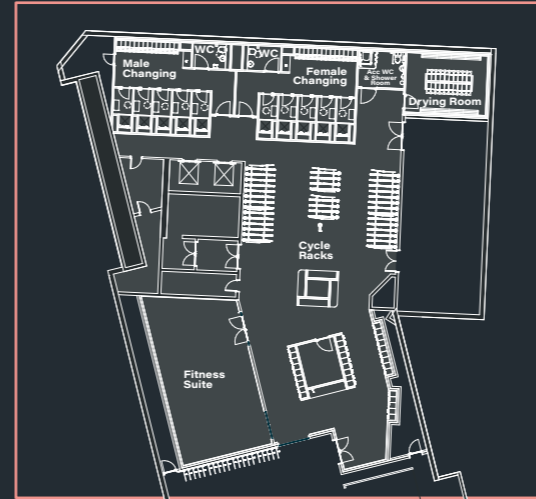


Wellbeing

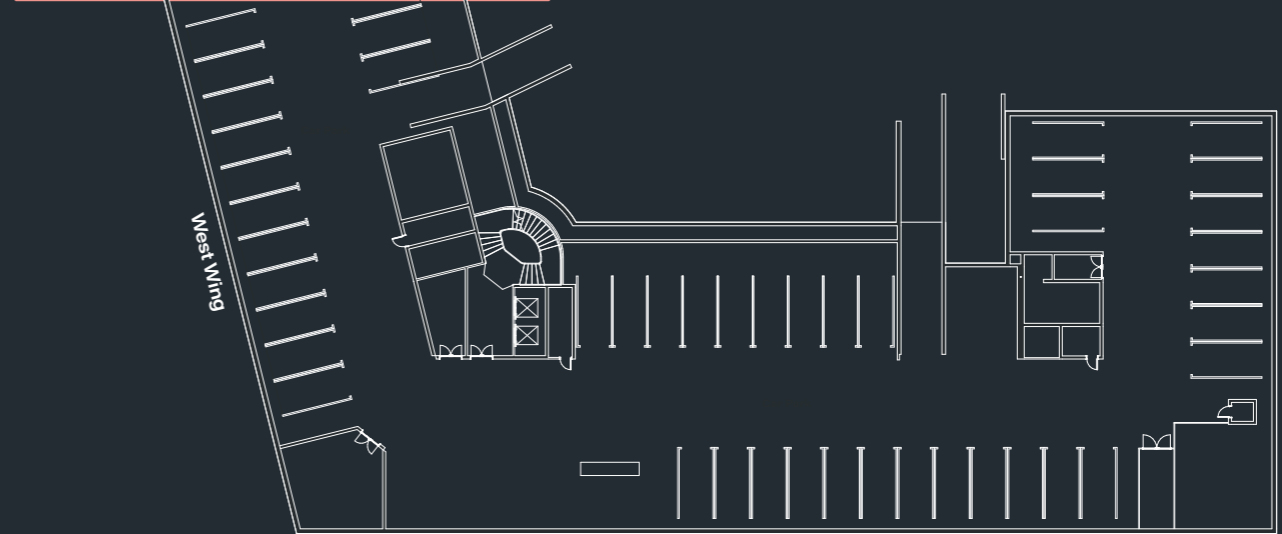
Amenity Zone



Wellbeing Amenity Zone



Basement



East Wing





Wellbeing



120 storage lockers



Designated drying room



Accessible shower and WC



52 cycle racks



Cycle repair and washing station



Fitness suite



10 shower cubicles

at a glance

300 Bath Street is ideally situated at Charing Cross, where Glasgow's thriving West End merges with the city centre.



Where the City meets the West End

On your doorstep

Crema - 2 mins' walk



The King's Theatre - 2 mins' walk



Tesco Express - 9 mins' walk



Charing Cross - 2 mins' walk



Across the road from 300 Bath Street is the conveniently located Charing Cross Station which provides regular rail links to city suburbs, Edinburgh and beyond.

Within a few minutes' walk are lots of great spots for a bite to eat or afterwork drinks including bike friendly Sauchiehall Street just around the corner.

Roya - 2 min walk



PureGym - 5 mins' walk



Dakota Hotel - 5 mins' walk



Stroll 10 minutes West away from the bustle of Sauchiehall Street and you'll discover some of the best cafés, restaurants and bars in Glasgow.

Joia - 10 mins' walk



The Finnieston - 10 mins' walk



Eleven Fifty Five - 12 mins' walk



Kelvingrove Park - 10 mins' walk



Heading West

The Ben Nevis - 12 mins' walk



Silla Korean Restaurant - 13 mins' walk



Ox and Finch - 12 mins' walk



Kelvingrove Café - 12 mins' walk



Six by Nico - 12 mins' walk



El Jefe's - 13 mins' walk

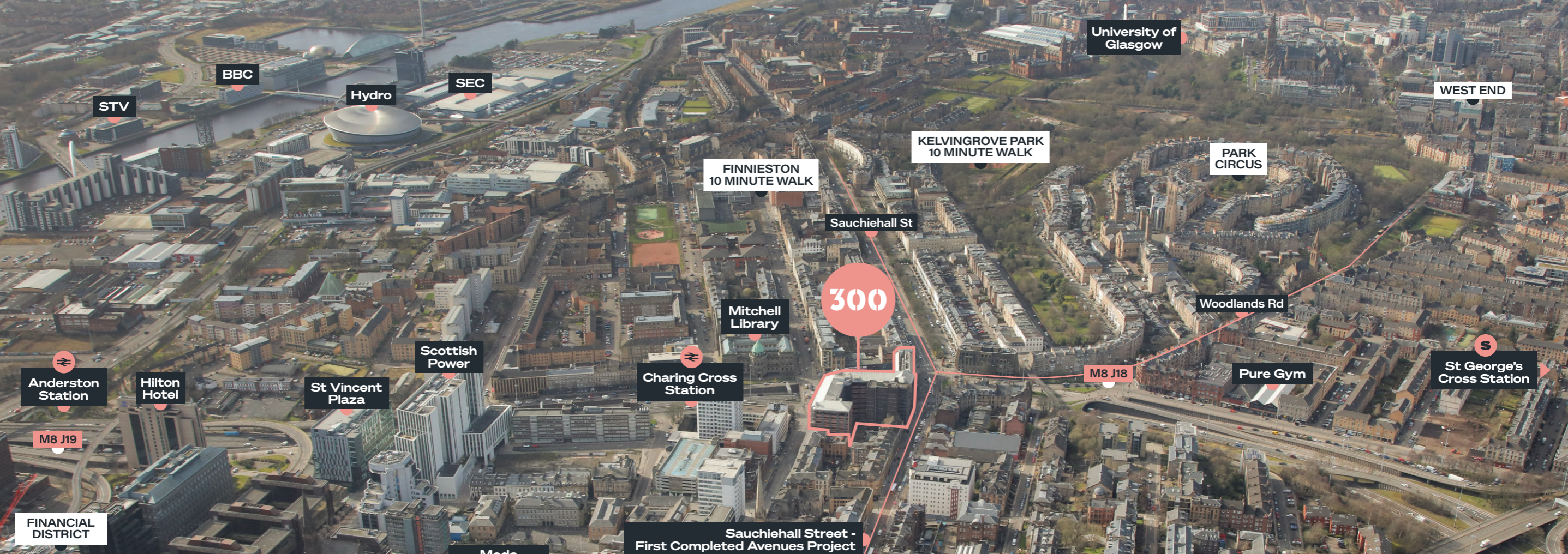


Elegant Park Circus,
Kelvingrove Park and
Art Gallery & Museum.

You're within easy reach of Finnieston

“One of the best places
to live in the UK”

The Times, 2019



STV

BBC

Hydro

SEC

University of Glasgow

WEST END

KELVINGROVE PARK
10 MINUTE WALK

PARK CIRCUS

FINNIESTON
10 MINUTE WALK

Sauchiehall St

Mitchell Library

Woodlands Rd

Anderston Station

Hilton Hotel

St Vincent Plaza

Scottish Power

Charing Cross Station

M8 J18

Pure Gym

St George's Cross Station

M8 J19

FINANCIAL DISTRICT

Sauchiehall Street -
First Completed Avenues Project

Moda Development

Malmaison

Dakota Hotel

BLYTHSWOOD SQUARE

Glasgow School of Art

Connecting Glasgow

- 1 Minute Drive
M8 Motorway
Junction 18
- 2 Minute Walk
Charing Cross
Station
- 10 Minute Walk
Finnieston
- 10 Minute Walk
Kelvingrove Park
- 10 Minute Walk
Anderston Station

- 12 Minute Walk
Cowcaddens &
St George's Cross
Subway
- 14 Minute Drive
Glasgow Airport
- 15-18 Minute Walk
Queen Street and
Central Station

Distances

300 Bath Street is ideally situated at Charing Cross, where Glasgow's thriving West End merges with the city centre.

- Subway Station
- Train Station
- Walking Times
- Cycle Routes



at a glance



Space available to let on flexible lease terms to be agreed.

Further Information



[300bathstreet.com](https://www.300bathstreet.com)

Ryden

Gillian Giles
gillian.giles@ryden.co.uk
07826 946 312

Tim Jacobsen
tim.jacobsen@ryden.co.uk
07787 183 341

NEWMARK

Paul Broad
paul.broad@nmrk.com
07921 933 666

Michael Facenna
michael.facenna@nmrk.com
07500 089 475

CBRE

Sarah Hagen
sarah.hagen@cbre.com
07468 724 253

Martin Speirs
martin.speirs@cbre.com
07590 864 816

Regional REIT

Jo Moroney
jo.moroney@regionalreit.com
07774 679 616

Images in this publication are for indicative purposes only. Misdescriptions: Messrs Ryden LLP / Newmark / CBRE for themselves or lessors of this property whose agents they are give notice that: (i) the particulars are set out as a general outline for the guidance of intended purchasers or lessees, and do not constitute, nor constitute part of, an offer or contract; (ii) all descriptions, dimensions, reference to condition and necessary permissions for uses and occupation, and other details are given without responsibility and any intending purchasers or tenants should not rely on them, as statements of fact but must satisfy themselves by inspections or otherwise as to the correctness of each of them; (iii) no person in the employment of Messrs Ryden LLP / Newmark / CBRE has any authority to make or give any representations or warranty whatever in relation to this property. Prepared April 2026.