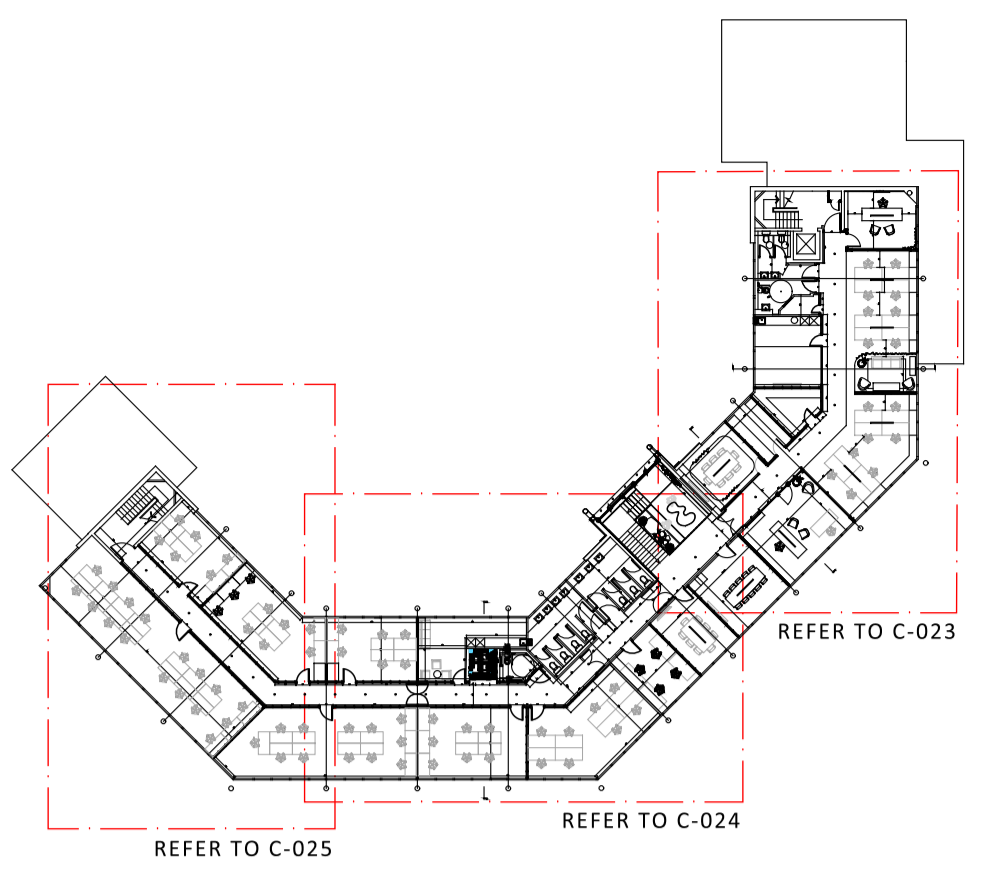


NOTES:
 Drawing is subject to Copyright © and must not be used without prior written consent from Wilson Paul Architects Ltd.
 Do not scale from drawing. Dimensions should be requested in writing to the project Architect.



Total Areas :

- Top floor Right**
- Office 1A = 18.6 SQM
 - Office 1B = 38.8 SQM
 - Office 1C = 32.9 SQM
 - Office 1D = 55.2 SQM
 - Office 1E = 75.2 SQM
 - Office 1F = 23.9 SQM
 - Office 1G = 35.1 SQM
 - Office 1H = 24.4 SQM
- Top floor Left**
- ARB = 120 SQM
 - Letable Unit = 48.75 SQM

Total Upper Floor = 472.85 SQM
Total Ground Floor = 700 SQM

Combined Total = 1172.85 SQM

Project Title : **Tayforth House**
 9 Luna Place, Dundee

Sheet Contents : Proposed First Floor Plan	
Full Plan	
Designed by : MM	Drawing Number :
Drawn by : MM	2082 C 123
Date : 28/09/23	
Scale : 1:100 @ A1	Revision : C02

WILSON / PAUL
 Chartered Architects
 4 Brook Street
 Broughty Ferry
 Dundee
 DD5 1DP
 T 01382 737866
 www.wilsonpaul.co.uk

