

THE DECK SOHO

14 MEARD STREET, LONDON, W1F 0EQ

High-quality, contemporary managed offices with excellent amenities

STYLISH SOHO

Located on Meard Street in the centre of Soho, The Deck offers up to 10,280 sq ft of fully fitted and furnished contemporary office space. The spacious light filled self-contained floors have been finished to the highest standard and benefit from private kitchens.

The building also boasts private outdoor terraces, a large bookable boardroom, bike racks, showers and a communal lounge with on-site barista and beer taps.



Reception and communal lounge



Building exterior





Communal lounge



Communal boardroom

HIGHLIGHTS



New, high-quality managed office space



Self-contained floors with dedicated kitchen and meeting rooms



Spacious light filled communal lounge



Impressive meeting spaces



Buzzing neighbourhood, excellent connectivity



Bike storage and shower facilities



Private outdoor terraces



Communal space with onsite barista and beer taps



1st floor office



1st floor office meeting rooms

AVAILABILITY

FLOOR	AVAILABILITY	DESKS	MAX OCCUPANCY	*MONTHLY RENTAL	SQ FT
4th	Available	24	30	£33,750	1,723
3rd	Available	24	34	£45,500	2,482
2nd	Available	32	44	£55,350	3,019
1st	Available	28	44	£58,500	3,056
G	LET	-	-	-	-
TOTAL					10,280

*Rental figures excluding VAT



2nd floor office with breakout areas



2nd floor office with breakout area and teapoint



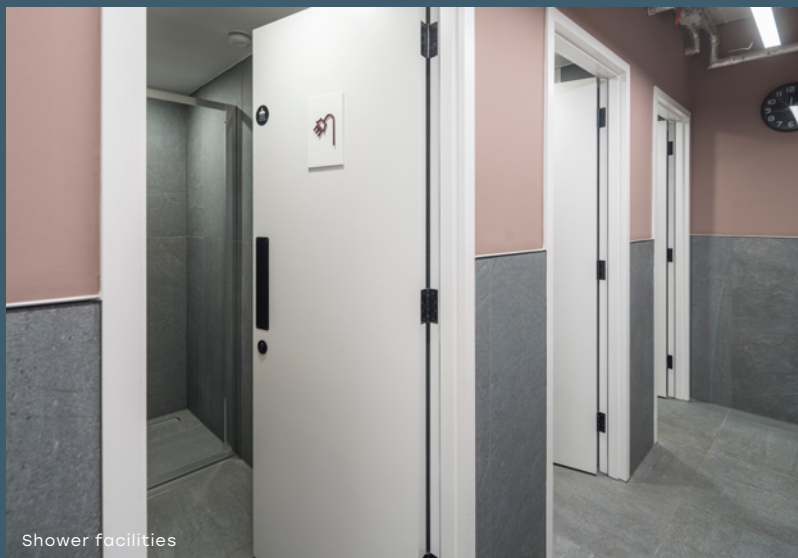
1st floor phone booths



2nd floor office



1st floor office



Shower facilities



Bike storage and lockers

4TH FLOOR

1,723 SQ FT / 160.0 SQ M

Workstations	24
Meeting Rooms	2
Teapoint	1
Breakout Spaces	3



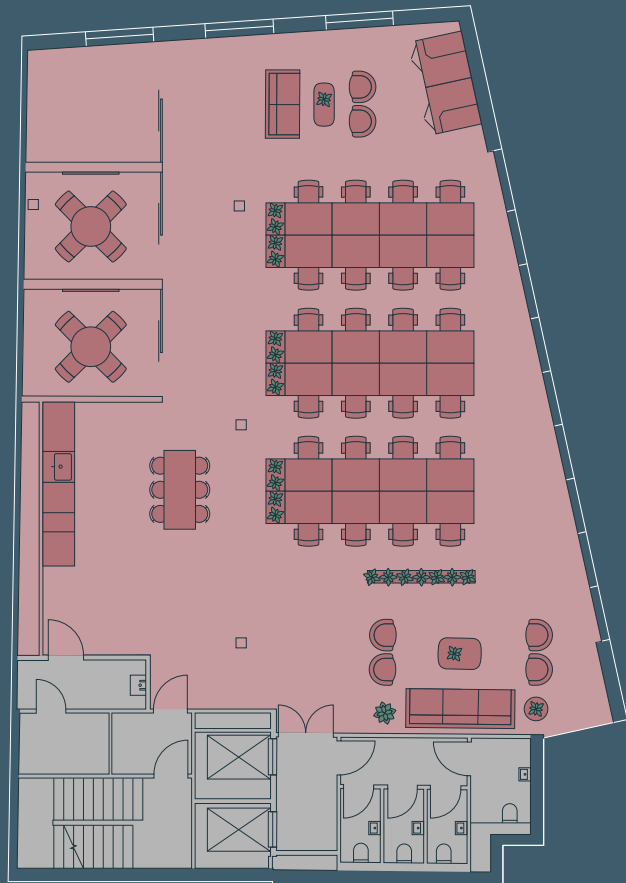
● Office ● Core ● Terrace



3RD FLOOR

2,482 SQ FT / 230.6 SQ M

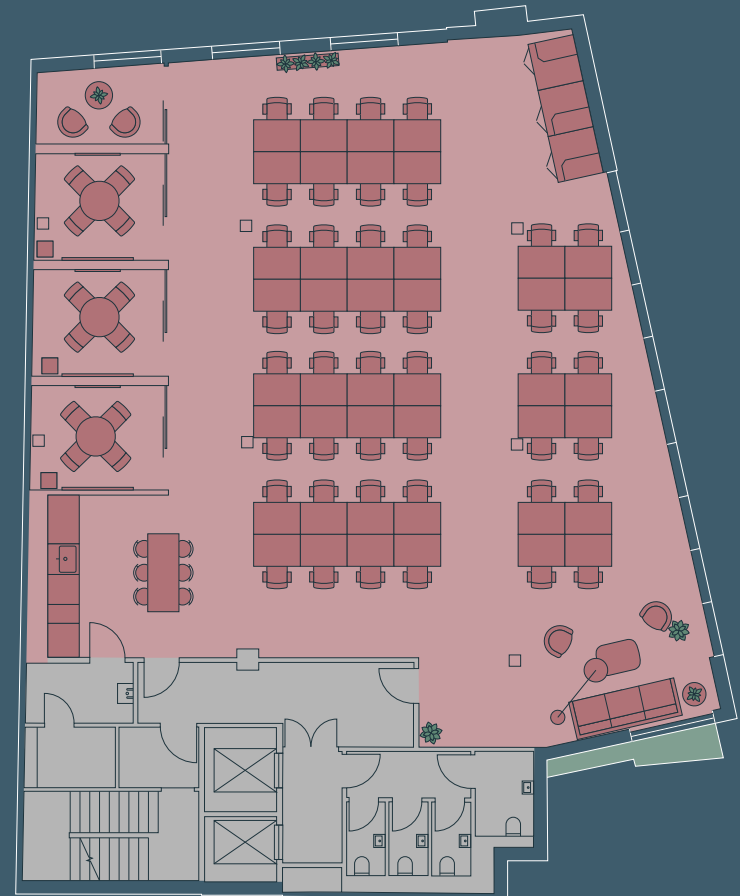
Workstations	24
Meeting Rooms	3
Phone Booths	2
Teapoint	1
Breakout Spaces	3



2ND FLOOR

3,019 SQ FT / 280.5 SQ M

Workstations	44
Meeting Rooms	4
Phone Booths	3
Teapoint	1
Breakout Spaces	2



● Office ● Core ● Terrace

1ST FLOOR

3,056 SQ FT / 283.9 SQ M

Workstations	28
Meeting Rooms	4
Phone Booths	3
Teapoint	1
Breakout Spaces	4



● Office ● Core ● Terrace



1st floor terrace



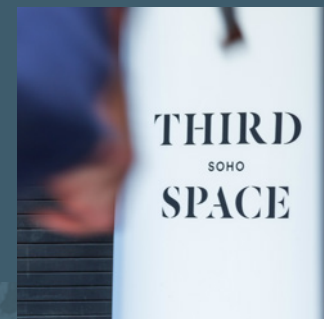
1st floor office

BUZZING SOHO

The building is in the heart of Soho and surrounded by London's most vibrant retail, bars, restaurants and entertainment. For peace and quiet, leafy Soho Square is on your doorstep and transport is excellent with numerous underground lines and the Elizabeth Line moments away.



Soho Square



HOTELS

1. Courthouse Hotel
2. The Soho Hotel
3. Dean Street Townhouse
4. Hazlitt's
5. Ham Yard
6. Broadwick Soho
7. Karma Sanctum

RESTAURANTS

1. 28-50 Oxford Circus
2. Aqua Kyoto
3. Flat Iron
4. Pastaiò Pasta
5. Dishoom
6. Ugly Dumpling
7. Polpo
8. INKO NITO
9. Bob Bob Ricard
10. Andrew Edmunds
11. temper
12. Yauatcha
13. The Ivy
14. The Duck & Rice
15. Blacklock
16. Randall & Aubin
17. 100 Wardour Street
18. Inamo
19. Bubala
20. Obicà
21. Barrafinà
22. Cay Tre
23. Cecconi's
24. La Bodega Negra
25. Eat Tokyo
26. Gunpowder
27. L'Escargot
28. Milk Beach
29. Chin Chin Dessert Club
30. 10 Greek Street
31. BAO

CULTURE

1. The Photographer's Gallery
2. Soho Theatre
3. The Butterfly Trail at Outernet
4. 21 Soho
5. Sondheim Theatre
6. Frith Street Gallery

BARS

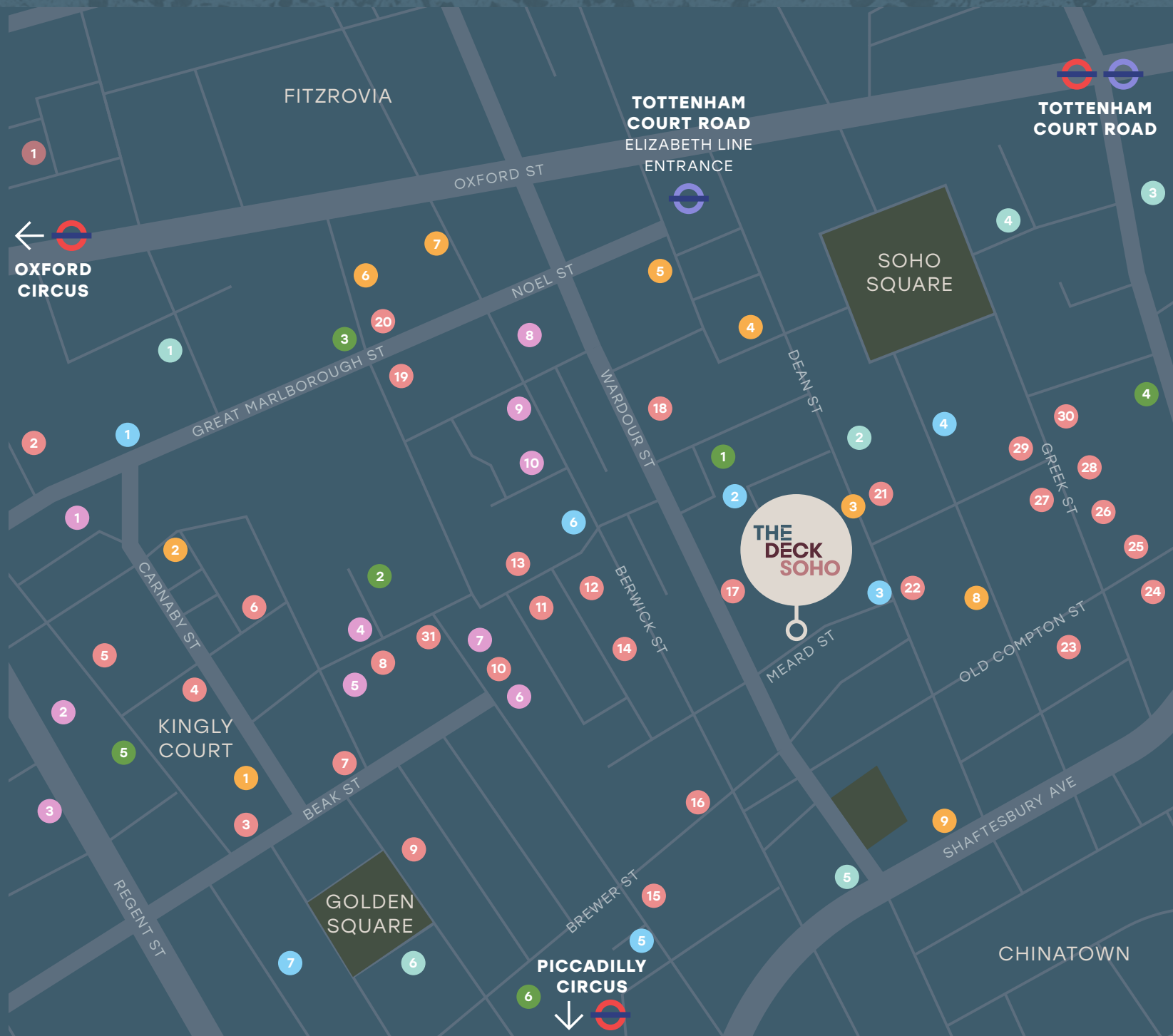
1. Cahoots
2. Antidote Wine Bar
3. Soho House
4. The Piano Bar
5. Mr Fogg's
6. Brewdog
7. Ember Yard
8. Ronnie Scott's
9. Century Club

RETAIL

1. Liberty
2. Breitling
3. Lululemon
4. Percival
5. END.
6. Byredo
7. A.P.C
8. Ted's Grooming Room
9. Sister Ray
10. Oliver Spencer

GYMS

1. Fitness Lab
2. F45
3. SoulCycle
4. UNTIL Soho
5. Barry's
6. Thirdspace





14 MEARD STREET, LONDON, W1F 0EQ

KONTOR

LUKE PARKINSON

luke.parkinson@kontor.com

07464 715644

BEN ORCHARD-SMITH

ben@kontor.com

07557 988115

FREYA DINGWALL

freya@kontor.com

07375 860911

Important notice relating to the Misrepresentation Act 1967 and the Property Misdescriptions Act 1991: (i) the particulars are set out as a general outline only for guidance of intending purchasers or lessees and do not constitute, nor constitute part of, an offer or contract (ii) all descriptions, dimensions, references to condition and necessary permission for use and occupation, and other details are given in good faith and are believed to be correct, but any intending purchasers or occupiers should not rely on them as statements or representations of fact, but must satisfy themselves by inspection or otherwise as to the correctness of each of them. June 2025

Design and production: www.stuartchapmandesign.co.uk 020 3983 1665