

SUMMARY OF INTERNAL AREAS



BELGRAVE COURT, Westferry Circus, Canary Riverside, LONDON, E8

FLOOR	USE	AREA sq m	AREA sq ft	INCLUDED AREAS		EXCLUDED AREAS	
				sq m	sq ft	sq m	sq ft
NIA							
GROUND	Office	51.6	555			Lobby	8.2 88
	Storage	3.7	40			Toilet	3.7 40
	Sub Total	55.3	595				
OVERALL TOTAL		55.3	595				

FLOOR	USE	AREA sq m	AREA sq ft	INCLUDED AREAS		EXCLUDED AREAS	
				sq m	sq ft	sq m	sq ft
GIA							
GROUND	Office/Storage	67.2	723				
OVERALL TOTAL		67.2	723				

BELGRAVE COURT, Westferry Circus, Canary Riverside,
LONDON, E8

Ground Floor Internal Area Plan

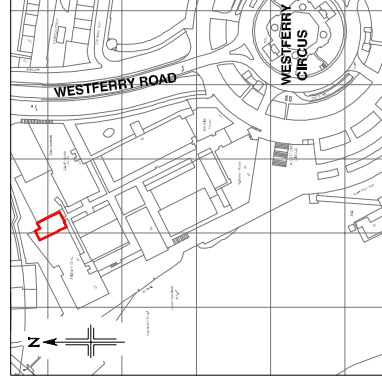
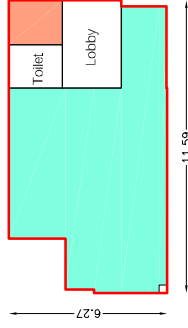
	OFFICE	51.6 sq m	555 sq ft
	STORAGE	3.7 sq m	40 sq ft

TOTAL AREA: 55.3 sq m 595 sq ft

The following areas have been EXCLUDED from the TOTAL Area:

Lobby	8.2 sq m	88 sq ft
Toilet	3.7 sq m	40 sq ft

	GIA	67.2 sq m	723 sq ft
---	-----	-----------	-----------



Location Plan

Not to Scale

This drawing contains Ordnance Survey data which has been reproduced with the permission of the Controller of Her Majesty's Stationery Office, Crown copyright 2003. PCA Licence Number 100020449

Drawing No.18000-39-BC-WFC-AG

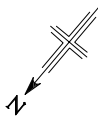
Issue A

July 2007

Scaled for presentation purposes

Plowman Craven PCA

+44(0)1582 765566  info@plowmancraven.co.uk
+44(0)1582 765370  www.plowmancraven.co.uk



Condition of Site:
Occupied
Fit-Out
Shell & Core
Under Construction
Cat A Fit-Out

Note:
This drawing indicates the extent of the areas quoted, produced to an accuracy commensurate with standard presentation scales. It is held in a scaled digital CAD format.

Revisions:
A - Final Issue
C -
D -
E -
F -