

ONE HOOPER'S COURT

KNIGHTSBRIDGE

—
4,098^{sq} FT PART THIRD FLOOR
OFFICE SPACE TO LET

THE KNIGHTSBRIDGE ESTATE.

HYDE PARK

MANDARIN ORIENTAL

HARVEY NICHOLS

ONE HYDE PARK

BULGARI HOTEL

ZUMA

BERKELEY HOTEL

ONE
HOOPER'S
COURT

BELGRAVE SQUARE

JUMEIRAH CARLTON TOWER

SLOANE STREET

HARRODS

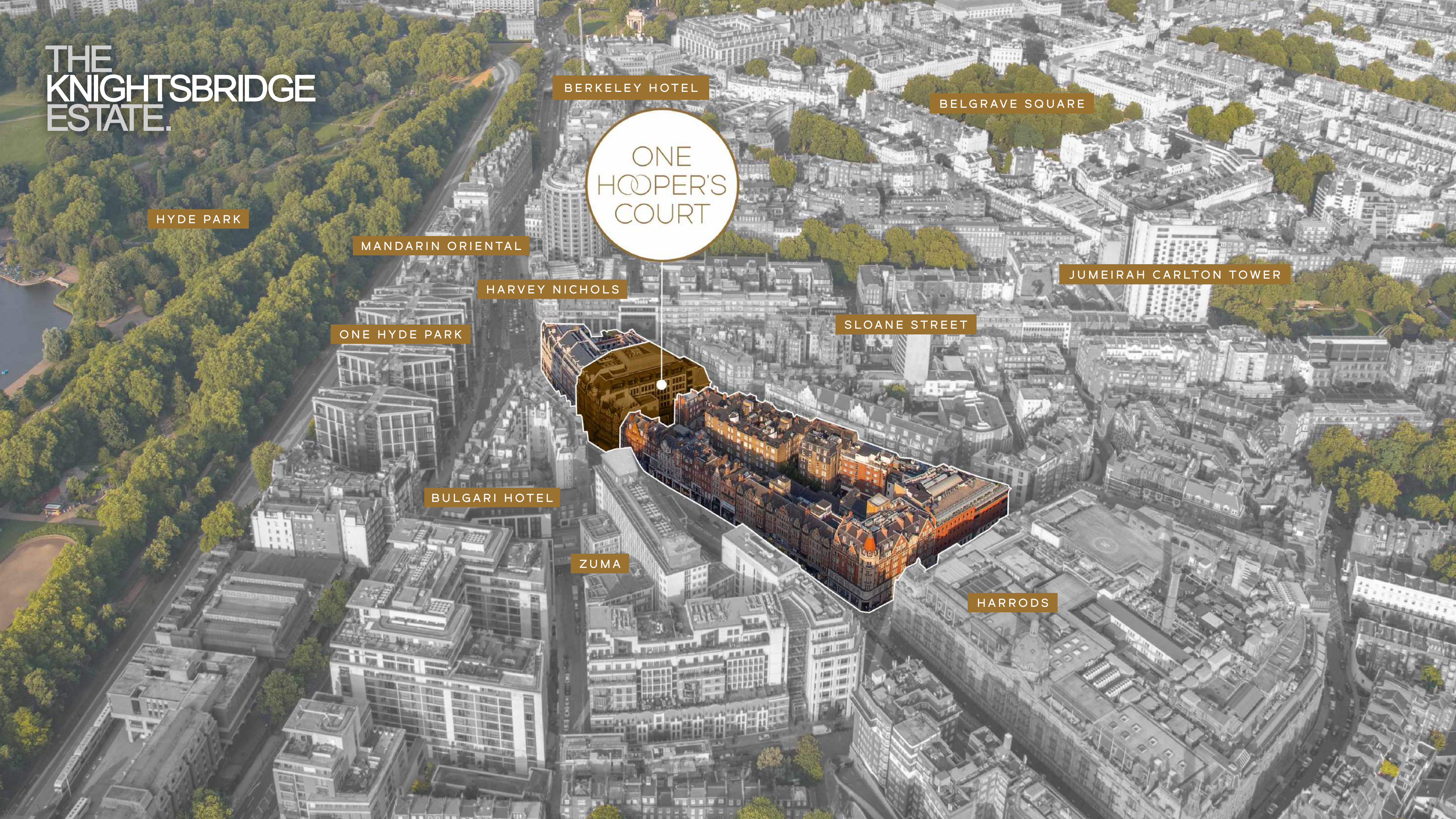




Image of One Hooper's Court



Hooper's Court



Reception of One Hooper's Court



Image of the Ground Floor Club Room

ONE HOOPER'S COURT

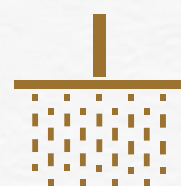
KNIGHTSBRIDGE



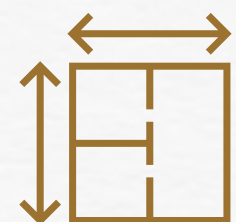
Underground
Servicing



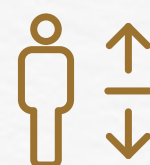
114 Bike spaces



Showers with
Changing Facilities
and Secure Lockers



Floor Area
4,098 SQ FT



4 x 17
Passenger Lifts



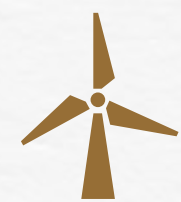
Concierge
Reception



4 Pipe Fan Coil
Air Conditioning



BREEAM
Excellent



All Electricity
Procured from
Renewable Sources



Image of the 3rd Floor





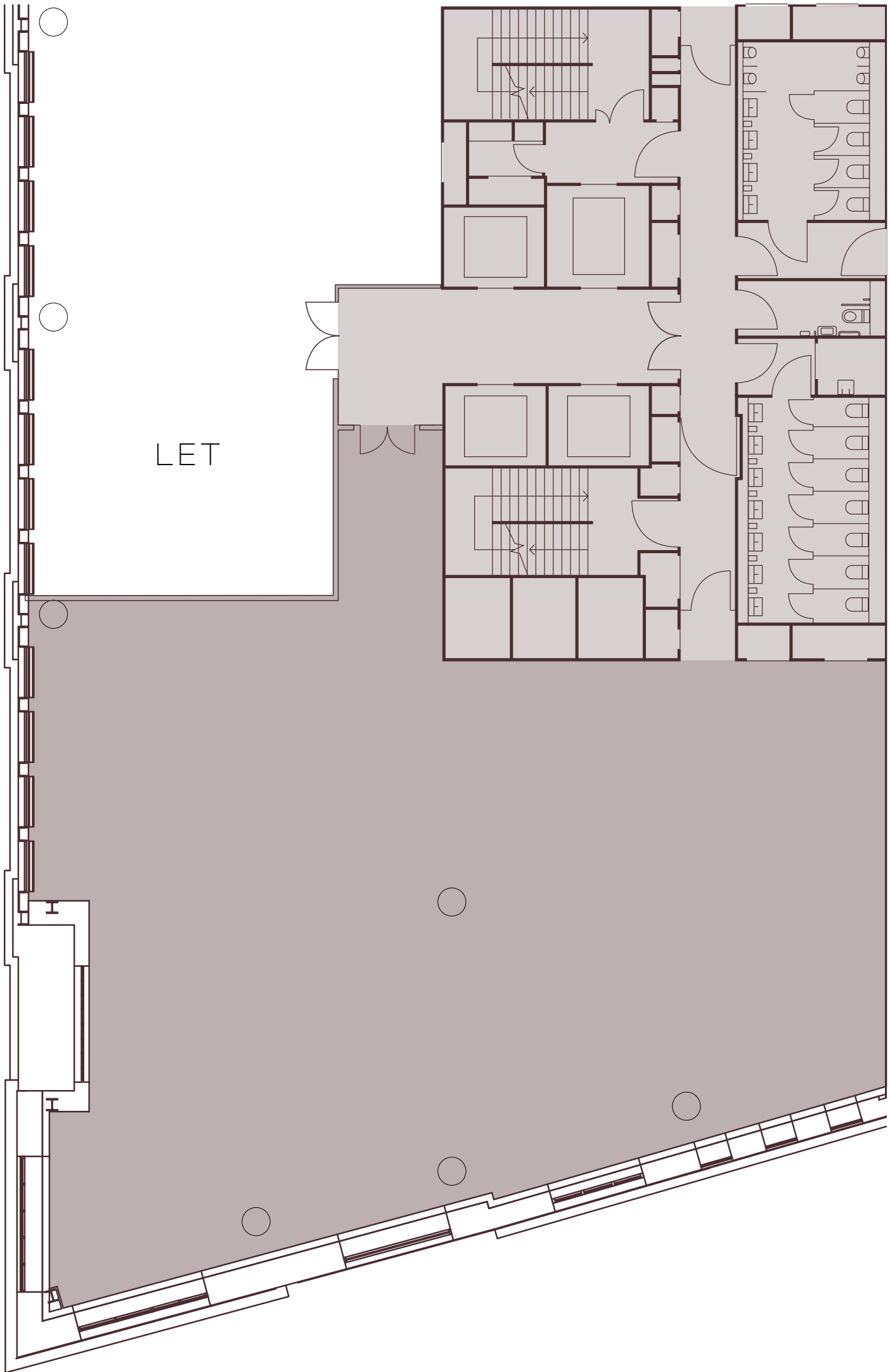
Indicative CGI of office fit out

PART THIRD FLOORPLAN

OPEN PLAN LAYOUT

380.7 SQ M

4,098 SQ FT

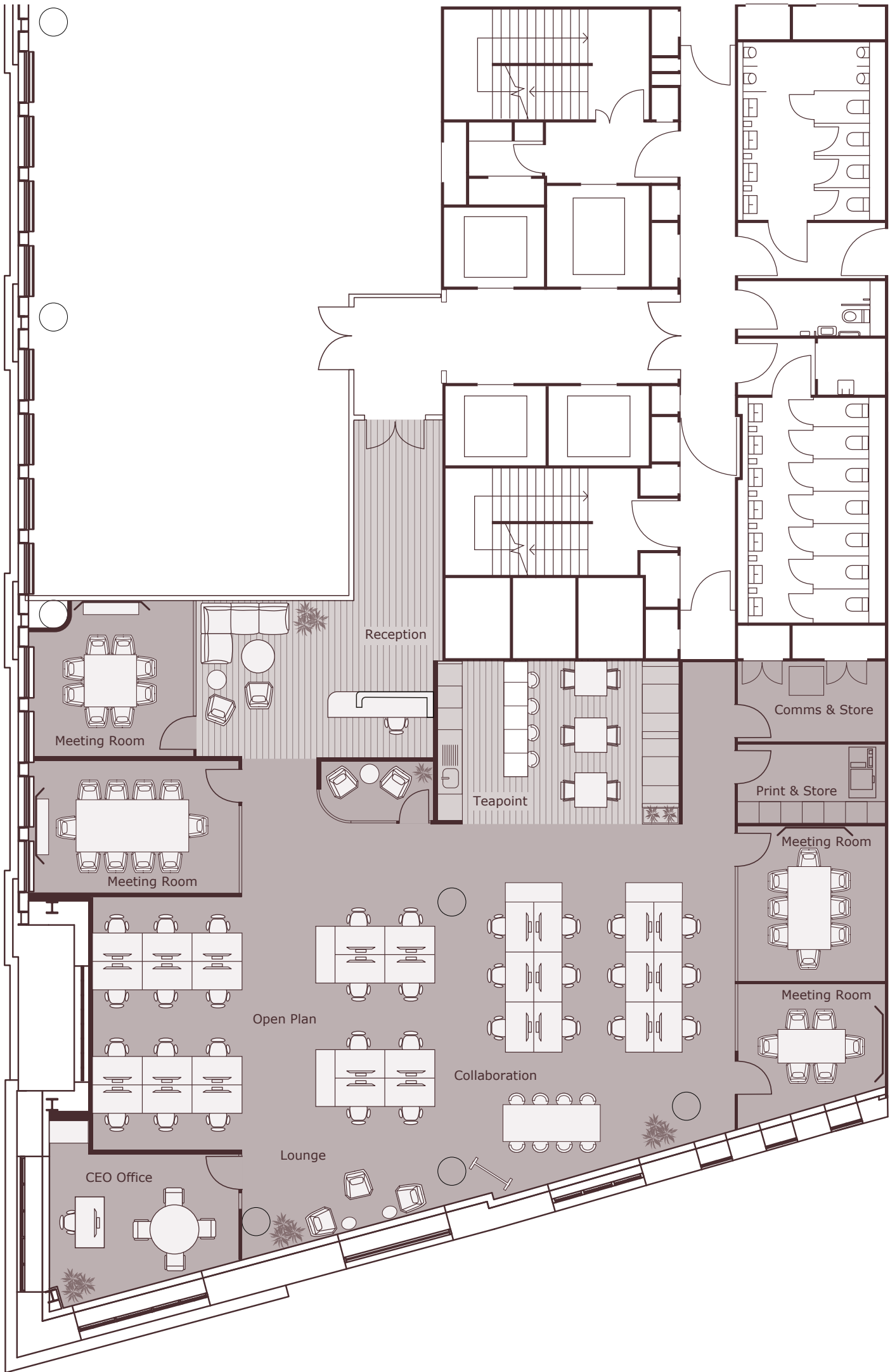


PART THIRD FLOOR SPACEPLAN

OPEN PLAN LAYOUT

380.7 SQ M

4,098 SQ FT



SUBLET AMENITY	QTY
Reception	1
Waiting Area	1
Meeting Room - 10	1
Meeting Room - 8	2
Meeting Room - 6	1
Conversation Room	1
Workstations (1800x800)	32
Hot Desks	6
Collaboration Area	1
Lounge	1
Tea Point	1
Comms Room	1
Print Point	1
Store Room	1
Total Ocupancy	33

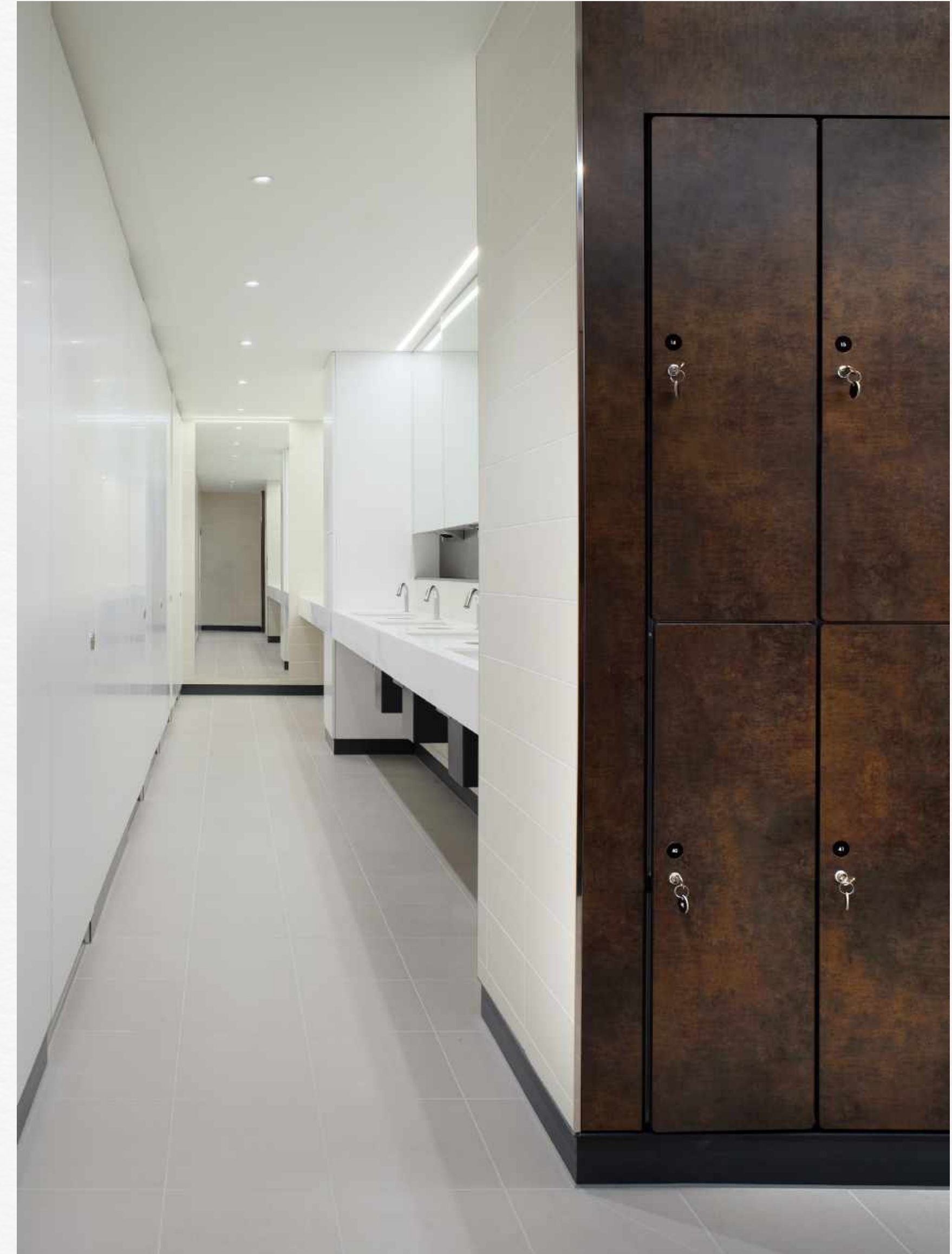
One Hooper's Court







Images of the Bike Storage
Room and Changing Facilities



CONTACT

For further information, please contact:

www.onehooperscourt.com



WILLIAM FOSTER

07748 985 951

DANNY BROWNLEE

07971 061 119

ELIZABETH GALBRAITH

07966 247 607



JAMIE SHUTTLE

07788 414 332

IAN BRADSHAW

07468 525 486

AMY SKIDMORE

07734 924 146



Important notice relating to the Misrepresentation Act 1967 and the Property Misdescriptions Act 1991: (i) the particulars are set out as a general outline only for guidance of intending purchasers or lessees and do not constitute, nor constitute part of, an offer or contract (ii) all descriptions, dimensions, references to condition and necessary permission for use and occupation, and other details are given in good faith and are believed to be correct, but any intending purchasers or occupiers should not rely on them as statements or representations of fact, but must satisfy themselves by inspection or otherwise as to the correctness of each of them. Q1 2024.