



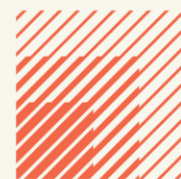
Unit 21 Glenmore Business Park

Lime Kiln Lane, Hardley Industrial Estate,

Holbury, Southampton SO45 2AR

FOR SALE /TO LET

125.72 sq m (1,352 sq ft)



**HELLIER
LANGSTON**

www.hlp.co.uk

02382 022111 southampton@hlp.co.uk

Industrial/ Warehouse Unit

Description

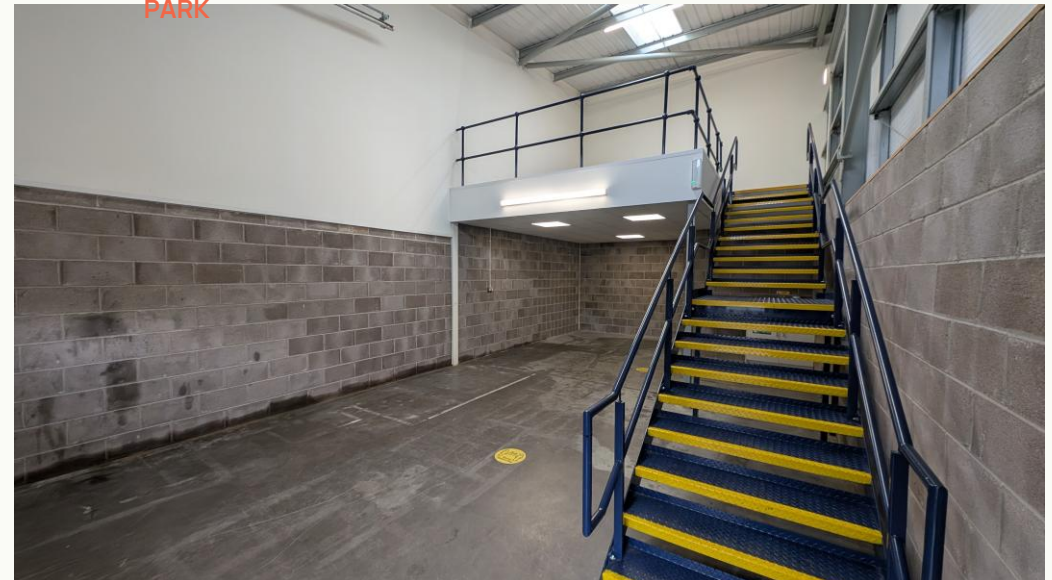
End of terrace unit provides a mix of light industrial and warehouse space with 1st floor mezzanine. The unit is built on a steel portal frame with low-level brick fascia with micro-rib cladding system above under an insulated profile metal sheet roof.

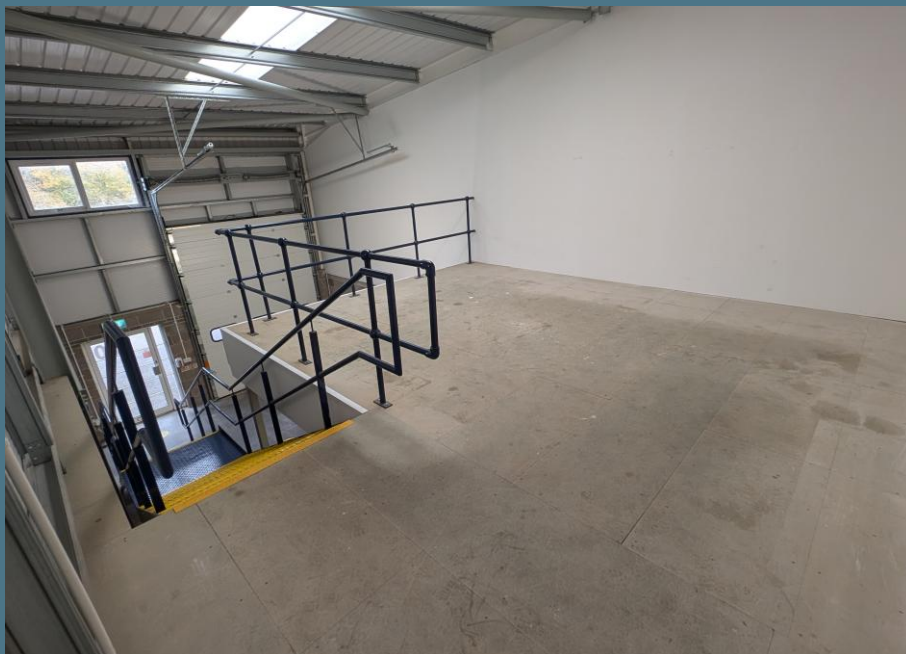
Specification

- 6m internal eaves height
- 15 kN/m² ground floor loading capacity
- Sectional up and over loading door
- 10% Daylight Roof Panels
- 2 Allocated Car Parking Spaces
- B8, B2 and Class E(g) (iii) use
- Large mezzanine floor
- Mains Gas, 3 Phase Electric and Water with BT Fibre Installed
- Suspended Ceiling with LED lighting beneath mezzanine
- Ground Floor Accessible WC
- Ground Floor Tea Point

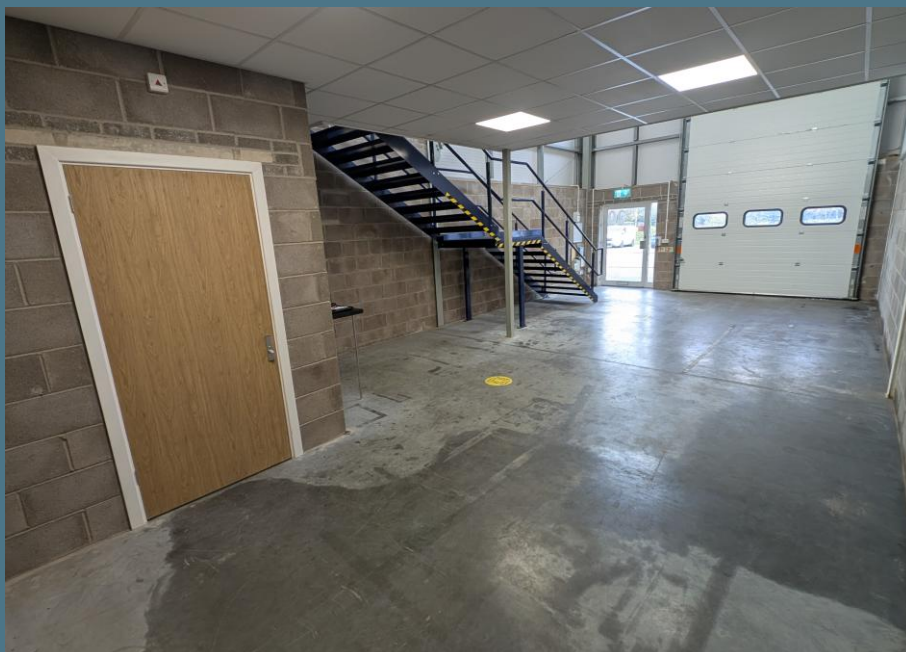


EXAMPLES OF A TYPICAL INTERIORS AT GLENMORE BUSINESS PARK





EXAMPLES OF A TYPICAL INTERIORS AT GLENMORE BUSINESS PARK



Industrial/ Warehouse Unit

Accommodation

The accommodation has been measured in accordance with the RICS Code of Measuring practice (6th Edition) to GIA as follows:

	Sq m	Sq ft
Warehouse and ancillary areas	81.06	872
First floor office and ancillary areas	44.66	480
Total	125.72	1,352

Business Rates

The premises are assessed in the April 2023 Rating List as Warehouse and Premises with a Rateable Value £13,250.

Estate Charge

We understand there is an estate service charge which is estimated at £670 per annum

EPC

B-43

Freehold Price

£358,280

Terms

The premises are available by way of a new Full Repairing and Insuring lease on terms to be agreed.

Rent

£21,632 per annum

VAT

Unless otherwise stated terms are strictly exclusive of Value Added Tax and interested parties must satisfy themselves.

AML

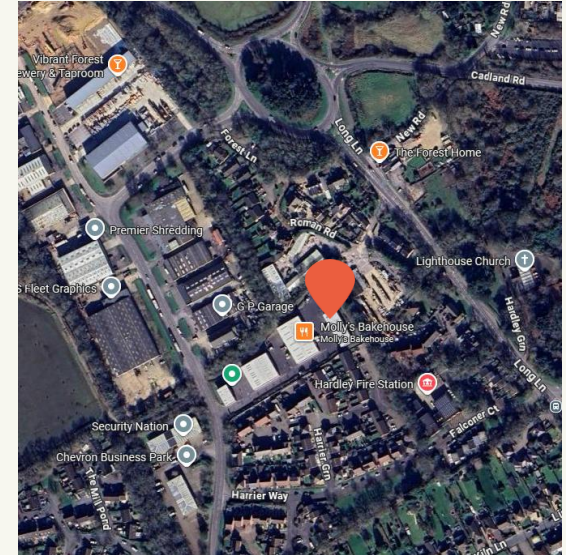
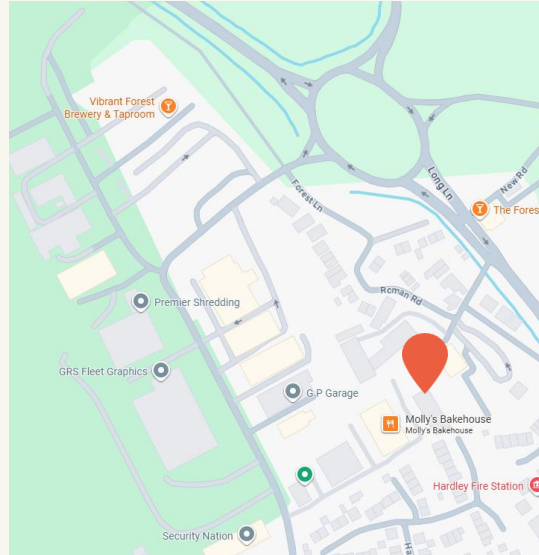
In order to comply with Anti-Money Laundering Regulations 2017 (as amended) and the Proceeds of Crime Act 2002, Hellier Langston are required to identify all prospective purchasers and tenants.

Code for Leasing Business Premises

In England and Wales the Code for Leasing Business Premises, 1st edition, strongly recommends that any party entering into a business tenancy or lease agreement takes professional advice from a surveyor or solicitor. A copy of the Code (1st edition, February 2020) can be found on the RICS website.

Location

The Glenmore Business Park comprises a new development of 24 units in a landscaped setting within an established commercial area in Holbury, near Fawley, Southampton. The site is within easy reach of Southampton city centre, benefits from proximity to the Fawley oil refinery, is well served by local roads and has good access to the M27 and wider UK motorway network.



HELLIER LANGSTON

www.hlp.co.uk

02382 022111 southampton@hlp.co.uk

Disclaimer: Hellier Langston Limited gives notice that these particulars are set out as a general outline only for the guidance of intending Purchasers or Lessees and do not constitute any part of an offer or contract. Details are given without any responsibility and any intending Purchasers, Lessees or Third Party should not rely on them as statements or representations of fact but must satisfy themselves by inspection or otherwise as to the correctness of each of them. No person employed or engaged by Hellier Langston Limited has any authority to make any representation or warranty whatsoever in relation to this property.



Contact us

Direct your viewing requests and enquiries to:



Matthew Poppett

07971 824525
matt@hlp.co.uk



Jason Webb

07989 959064
jason@hlp.co.uk



Strictly by appointment with sole agents Hellier Langston