

No. 11

WATERLOO PLACE

WATERLOO  
PLACE SW1  
CITY OF WESTMINSTER

WATERLOO  
PLACE SW1  
CITY OF WESTMINSTER

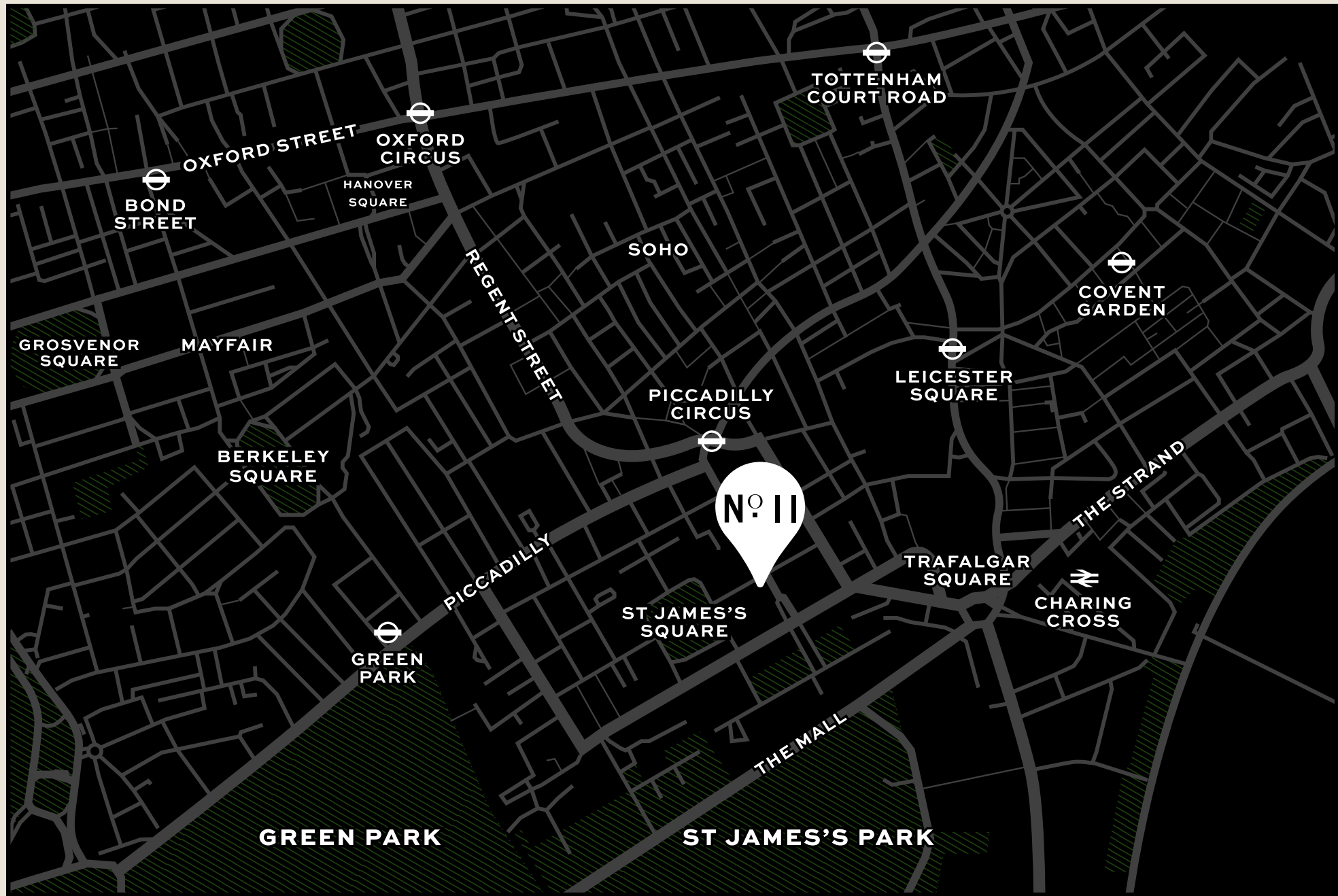
WATERLOO  
PLACE SW1  
CITY OF WESTMINSTER

WATERLOO  
PLACE SW1  
CITY OF WESTMINSTER



# A NEW VIEW OF LONDON

A rare opportunity to occupy 5,014 sq ft of exceptional, newly refurbished office space in an enviable position with views towards St James’s Park.



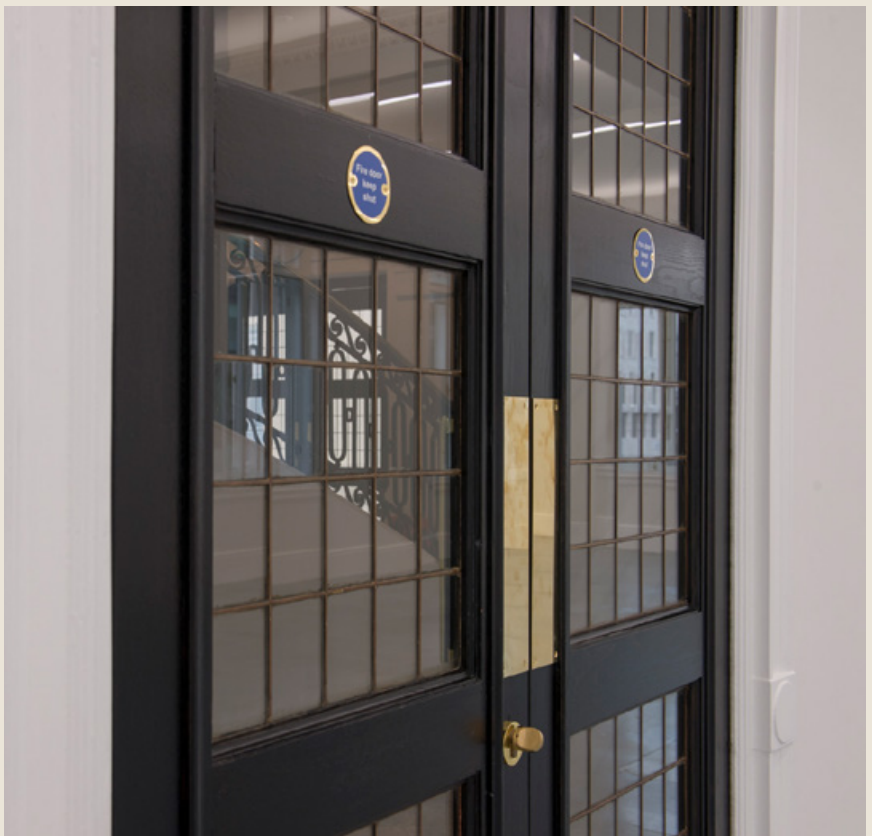
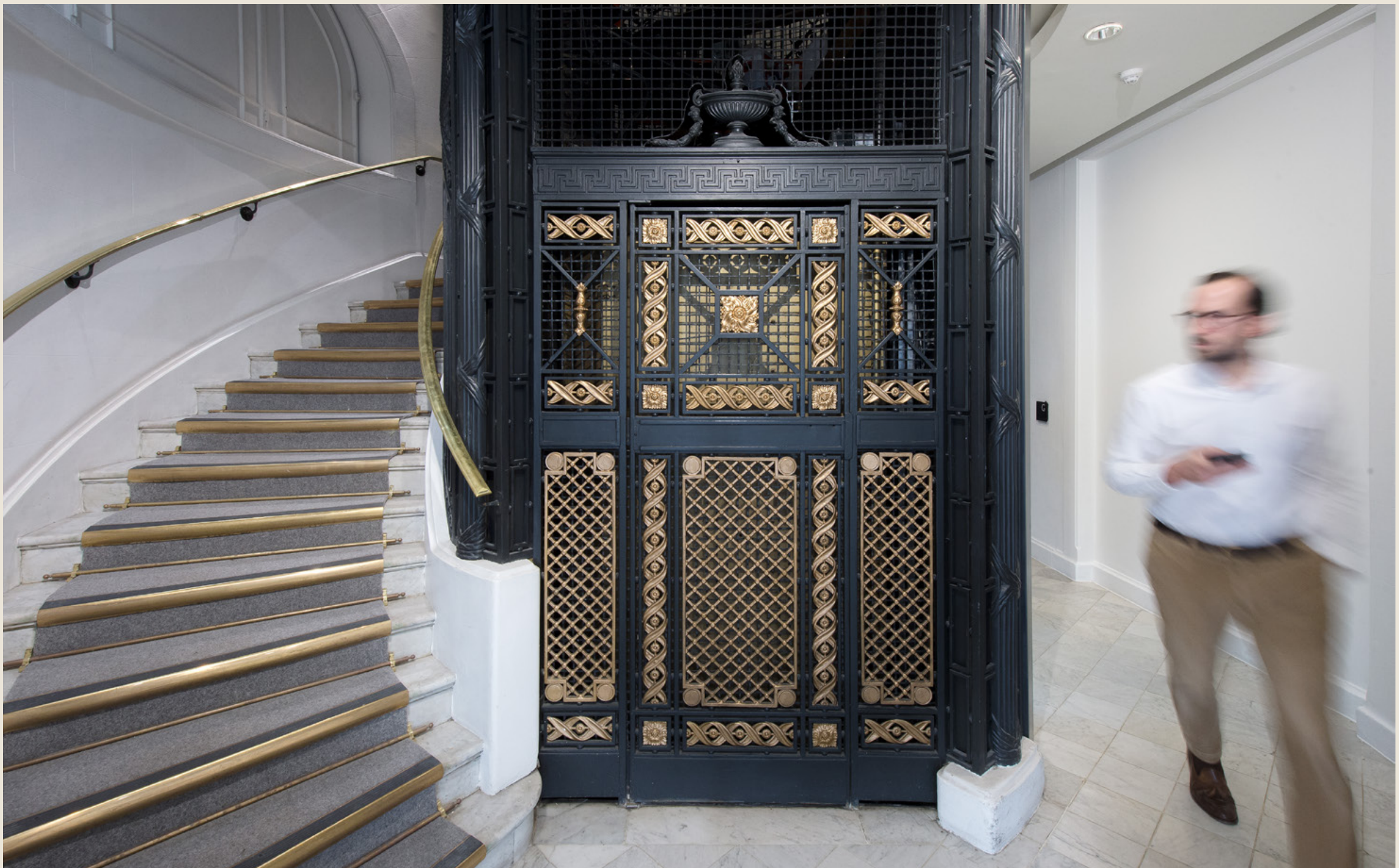
A 5 minute walk to **COVENT GARDEN**, a few minutes from the buzz of **SOHO** and a short stroll from the green spaces of **ST JAMES’S PARK**, this is a location that champions everything Central London has to offer.





# THE REFURBISHMENT

The manned reception has been sensitively and tastefully refurbished in keeping with the heritage of the architecture and original design of the building.



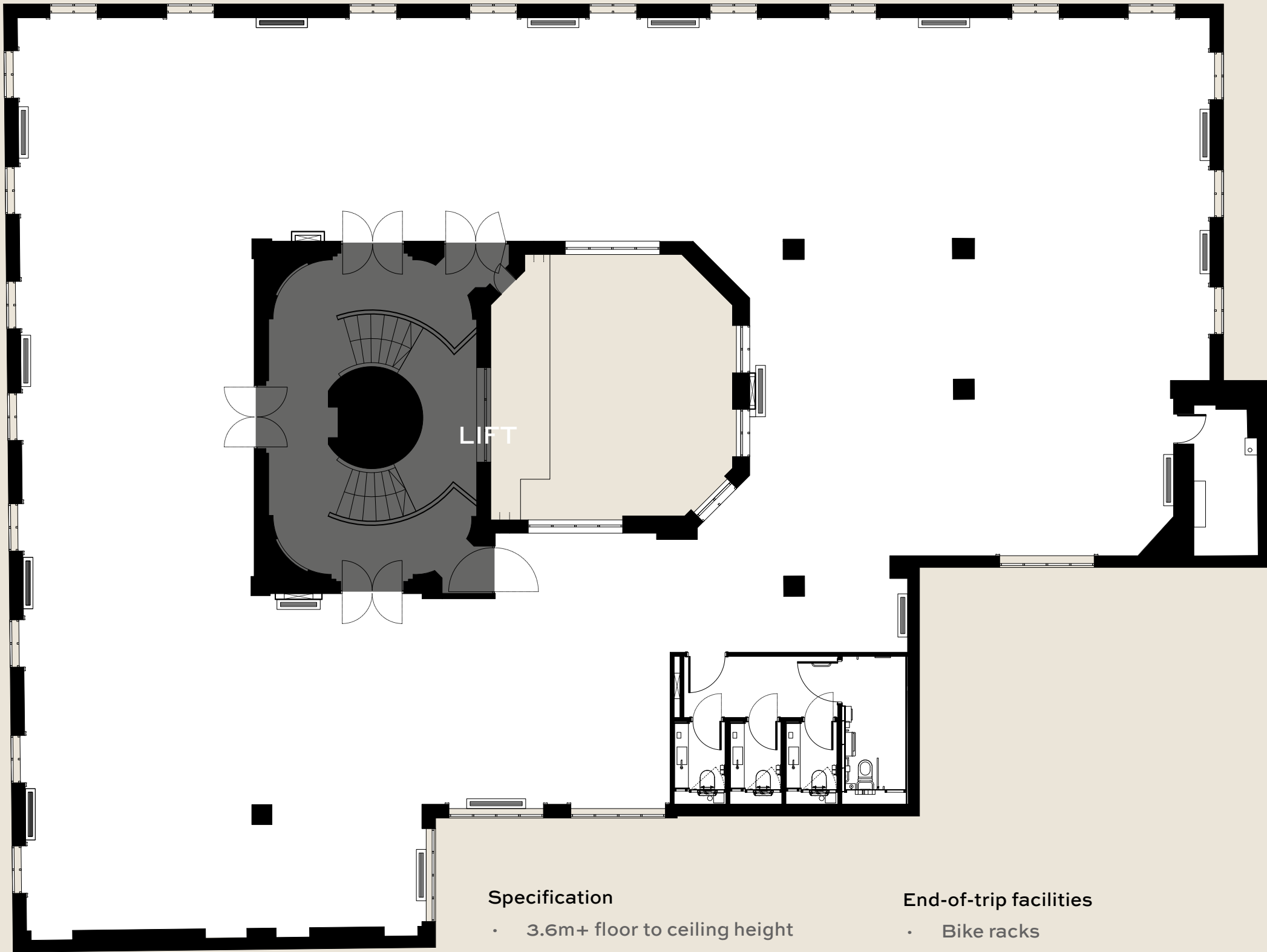






# SPACEPLAN

SIZE: 5,014 SQ FT



Specification

- 3.6m+ floor to ceiling height
- LED lighting
- Original period cornicing
- Air conditioning with fresh air ventilation
- Timber casement windows with secondary glazing
- New WCs
- Lift

End-of-trip facilities

- Bike racks
- Showers and changing facilities
- Secure lockers
- Bike repair station

## CELLULAR



Office could be swapped for additional 6no desks

Meeting rooms open into larger boardroom

Accommodation Schedule

• Open plan desking	30-36	• Management Office	2
• Reception lounge area (12+)	1	• Collaboration / area (10+)	1
• Meeting room (10)	2	• Open sofa booths	2
• Combined boardroom (22)	1	• Phone booth	2
• Meeting room (6)	1	• Teapoint	1
• Soft meeting room (4)	1	• Breakout area (30+)	4
• Executive office	2		

Plans show indicative layout and are subject to further site survey



# SPACEPLAN

## LOW DENSITY



Accommodation Schedule			
• Open plan desking	38	• Collaboration / hot desks (6)	1
• Reception lounge area (12+)	1	• Open sofa booths	2
• Boardroom (14)	1	• Teapoint	1
• Meeting room (8)	2	• Breakout area (30+)	1
• Meeting room (2)	1	• WC's	4
• Executive office	1		

Plans show indicative layout and are subject to further site survey

## HIGH DENSITY



Accommodation Schedule			
• Open plan desking	46	• Collaboration / hot desks (6)	1
• Reception lounge area (12+)	1	• Open sofa booths	2
• Boardroom (14)	1	• Teapoint	1
• Meeting room (8)	2	• Breakout area (30+)	1
• Meeting room (2)	1	• WC's	4
• Executive office	1		

Plans show indicative layout and are subject to further site survey



# GET IN TOUCH

## BLUEBOOK

TOR CUMING

E: [tor@bluebooklondon.co.uk](mailto:tor@bluebooklondon.co.uk)  
T: 07714 089 823

ROBBIE ROWAN

E: [robbie@bluebooklondon.co.uk](mailto:robbie@bluebooklondon.co.uk)  
T: 07973 267 435



ELEVENWATERLOOPLACE.COM

