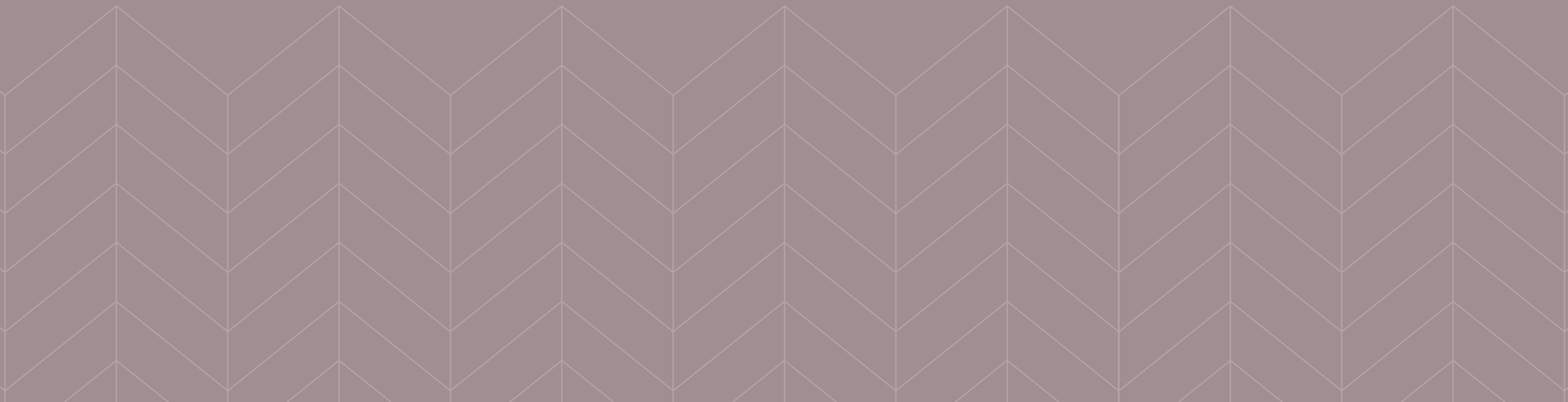


ONE KING STREET



Welcome to One King Street

Premium workspace in the heart of Central Manchester.

Perfectly positioned on the corner of King Street and Deansgate, One King Street places your business at the centre of one of Manchester's most established and well-connected locations. This prominent address benefits from excellent transport links, a strong professional community and an unrivalled selection of retail, hospitality and leisure on the doorstep.

Inside, One King Street has been newly remodelled to offer modern, beautifully designed workspace with high-quality finishes throughout. Light-filled floors, efficient layouts and stylish communal areas combine to create an environment where people feel inspired to do their best work.

Whether you're seeking fully fitted and furnished suites or open-plan space to tailor to your needs, One King Street provides flexible solutions to support ambitious, forward-thinking businesses.



City Centre
location



2 passenger
lifts



Ground floor
loading bay



LED
lighting





One King Street has been remodelled with wellbeing at the forefront.

Our basement facilities include brand new showers, changing rooms and lockers, alongside ample cycle storage with a bike workstation to encourage a greener commute to the office.



Showers



Changing rooms + lockers



Cycle storage



Bike workstation



3rd Floor Availability

Suite C	1,071 sq ft	Available
Suite E	1,672 sq ft	Available

Suite E - 1,672 sq ft
Fully-fitted + Furnished



16 Workstations



1 Boardroom



4 Informal
meeting areas



Raised floors



Sensor LED
lighting



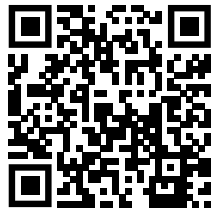
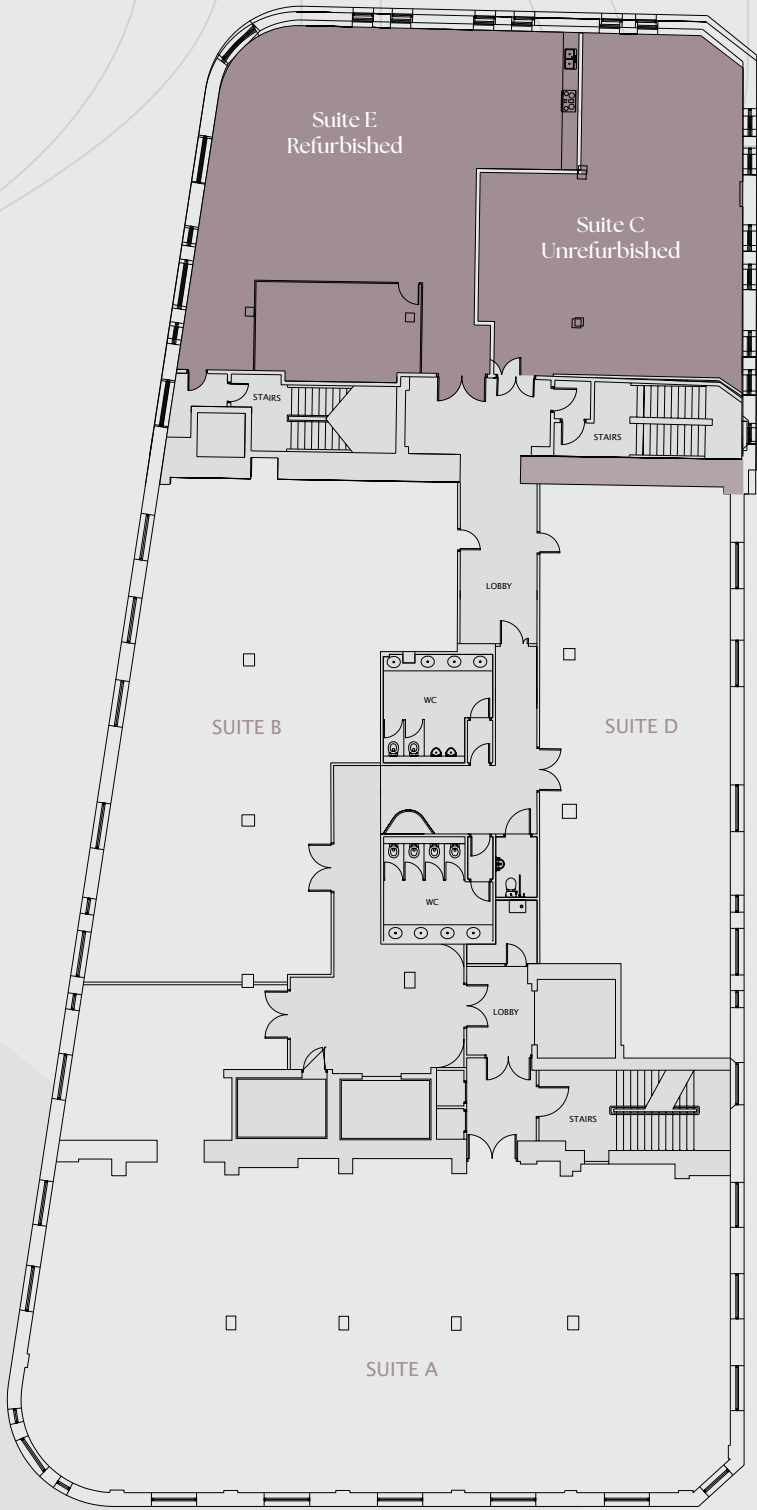
VRF Air
Conditioning



Kitchen &
breakout space



High-quality fixtures
& fittings



Interactive Tour



5th Floor Availability

4,302 sq ft (CAT A+)



3 Meeting rooms



Kitchen & breakout space



Exposed brick walls



Raised floors



Sensor LED lighting



VRF Air conditioning



Spectacular views across Manchester city centre



Interactive Tour



LOCATION

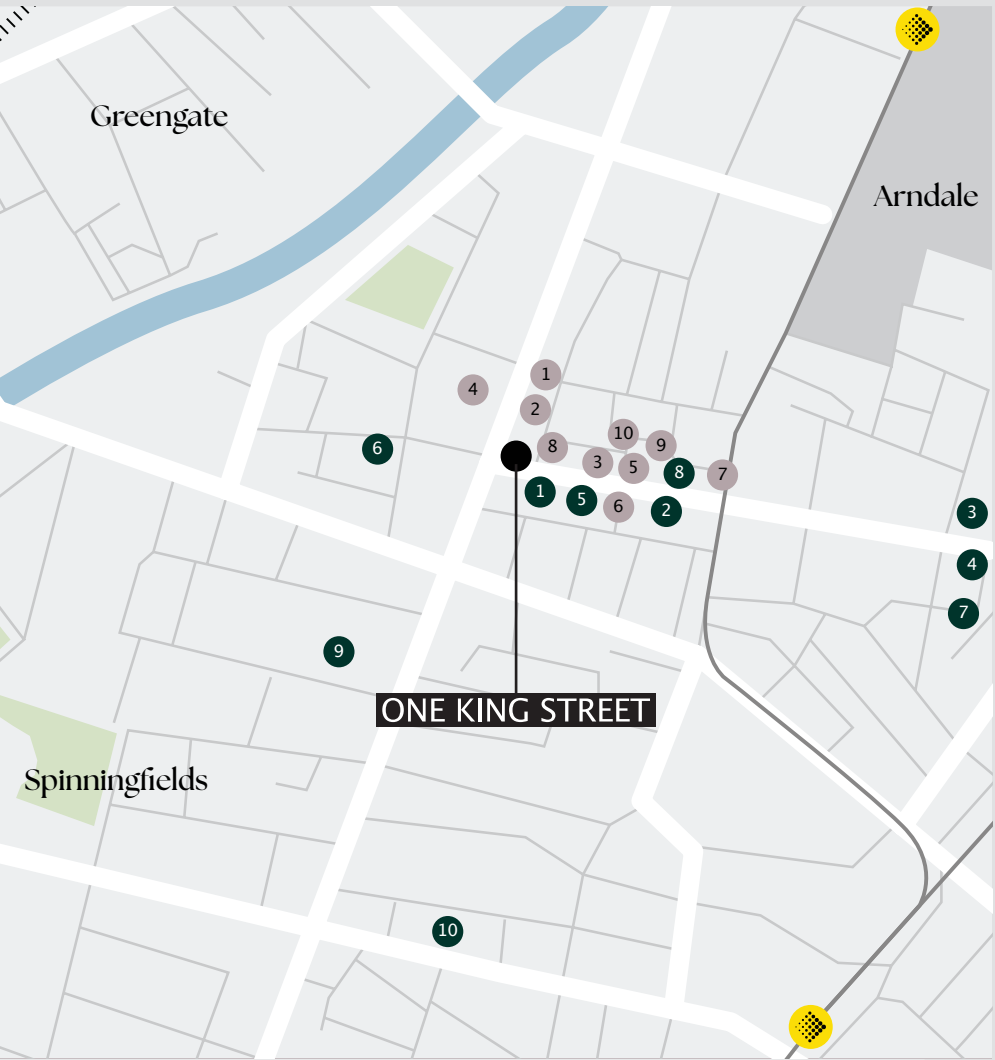
The building is easily accessible from both Piccadilly and Victoria Railway stations with the Metrolink close by at both St Peter’s Square, Market Street and Exchange Square.

Walk Times to Train Stations

Salford Central	10 minutes
Victoria Station	11 minutes
Piccadilly	16 minutes

Walk Times to Tram Stations

Exchange Square	7 minutes
St Peter’s Square	7 minutes
Market Street	10 minutes



Retail

- 1. Waterstones
- 2. Hobbs
- 3. Boodles
- 4. House of Fraser
- 5. The White Company
- 6. Charles Tyrwhitt
- 7. Patagonia
- 8. Jo Malone
- 9. Loake
- 10. Neals Yard

Food & Drink

- 1. Gails
- 2. El Gato Negro
- 3. Lucky Cat
- 4. SixByNico
- 5. Tast
- 6. San Carlo
- 7. Flight Club
- 8. Franco Manca
- 9. Sexy Fish
- 10. Albert Schloss



ONE KING STREET



Fionnuala McCallion
fionnuala@canningoneill.com
0776 520 5652



Rosie Veitch
rosie@sixteenrealestate.com
07746 249 920

MISREPRESENTATION ACT

Sixteen for themselves and for the vendors or lessors of this property, whose agents they are give notice that: a) all particulars are set out as general outline only for the guidance of intending purchasers or lessees, and do not comprise part of an offer or contract: b) all descriptions, dimensions, references to condition and necessary permissions for use and occupation, and other details are given in good faith and are believe to be correct but any intending purchasers or tenants should not rely on them as statements or representations of fact but must satisfy themselves by inspection or otherwise as to the correctness of each of them. c) no person in the employment of Sixteen has any authority to make any representation of warranty whatsoever in relation to this property. July 2025