

**fisher
german**

1st Floor Medical Suite, 65 New Street

Birmingham, B2 4DU

Leasehold
Prime city centre medical
opportunity

2,126 Sq Ft (198 Sq M)





Amenities



Open Plan



City centre
location



New St Station
2 minutes walk

1st Floor Medical Suite, 65 New Street

2,126 Sq Ft (198 Sq M)

Description

The property is accessed via an attractive ground floor reception entrance with concierge service, with passenger lift access to the upper floors.

The available accommodation comprises a self-contained first floor suite extending to approximately 2,126 sq ft.

Currently configured to provide a mixture of open-plan accommodation, meeting facilities, breakout areas and staff welfare provision, the suite offers occupiers the opportunity to adapt the space to suit individual operational requirements.

The flexible floorplate is capable of accommodating consulting rooms, treatment suites, counselling facilities, administration offices, patient waiting areas and healthcare support functions, subject to occupier requirements and any necessary consents.

Occupiers will benefit from a professional working environment within a building that has already established itself as a recognised healthcare destination within Birmingham city centre.

Specification

- First floor medical and healthcare opportunity
- Extending to 2,126 sq ft (198 sq m)
- Existing healthcare occupiers within the building
- NHS Blood Donor Centre and NHS Blood & Transplant in occupation
- Suitable for medical, healthcare and clinical uses (subject to planning)
- Passenger lift serving all floors
- DDA compliant accommodation
- Concierge reception
- Kitchen and staff welfare facilities
- Shower and WC facilities
- Flexible internal layout
- Excellent public transport connectivity
- 2 minute walk from Birmingham New Street Station
- Flexible lease terms available

Suitable For

- | | |
|---|------------------------------------|
| • Private Medical Practices | • Diagnostic & Screening Operators |
| • Specialist Consultants | • Dental Consultation Centres |
| • Physiotherapy Providers | • Wellbeing & Therapy Providers |
| • Occupational Health Services | • Healthcare Charities |
| • Mental Health & Counselling Providers | • Medical Administration Centres |
| • Aesthetic & Cosmetic Clinic | • Healthcare Training Providers |



Location

The property is prominently situated on New Street, close to Victoria Square. It therefore has all of the advantages of the city centre's numerous retail and leisure facilities and is also in close proximity to its excellent transport infrastructure.

Accommodation

Description	Sq Ft	Sq M
1 st Floor Medical Suite	2,126	198

Locations

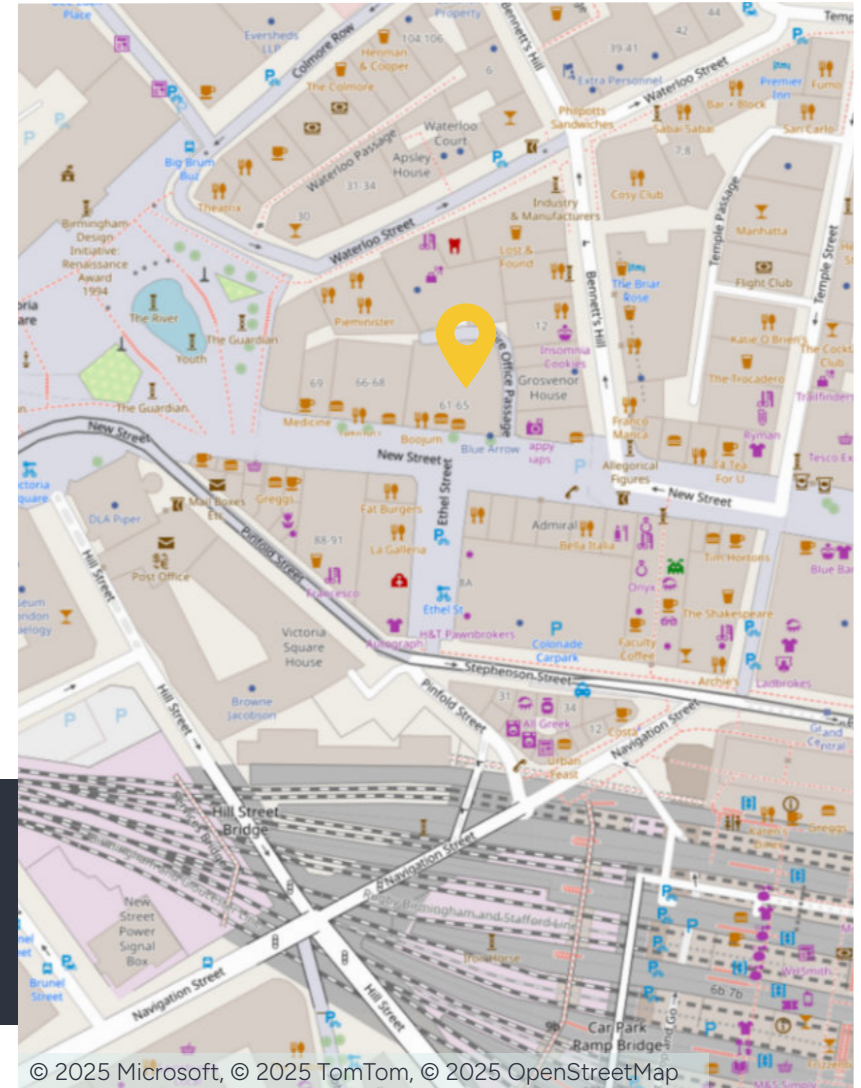
Bull Ring: 0.4 miles
Colmore Row: 0.1 miles
Brindleyplace: 0.6 miles

Nearest station

Birmingham New Street: 2 minute walk

Nearest airport

Birmingham International: 14.9 miles



Further information

Rent

On application.

Lease Terms

The accommodation is available by way of new lease on terms to be agreed.

Business Rates

Occupiers will be responsible for paying business rates directly to the local authority.

Services

We confirm we have not tested any of the service installations and any occupiers must satisfy themselves as to the state and condition of such items.

Service Charge

A service charge will be levied for the landlord's services provided.

Legal Costs

Each party to be responsible for their own legal costs incurred in this transaction.

Fixtures & Fittings

Any fixtures and fittings not expressly mentioned within these particulars are excluded from the letting.

EPC

The EPC for this suite is available on request.

Anti Money Laundering

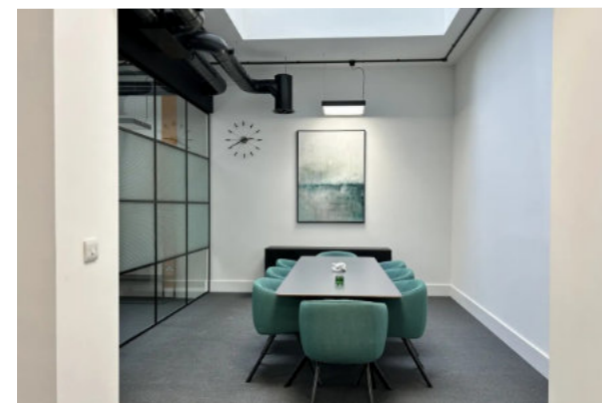
The successful tenant will be required to submit information to comply with Anti Money Laundering Regulations.

VAT

Unless otherwise stated, all prices and rents quoted are exclusive of Value Added Tax (VAT). Any intending tenant should satisfy themselves independently as to VAT in respect of this transaction.

Viewings

Strictly by prior arrangement with Fisher German or our joint agents FHP Property Consultants.



Contact us



Charles Warrack

07977 512 965

charles.warrack@fishergerman.co.uk



James Allison

07974 519 507

james.allison@fishergerman.co.uk



Or our joint agents: FHP Property Consultants

Caine Gilchrist

07538 606 880

caine.gilchrist@fhp.co.uk

Please note: Fisher German LLP and its Joint Agents give notice that: 1. They have no authority to make or give any representation or warranty on any property whether on their own behalf or on behalf of their clients or otherwise. 2. They do not owe any duty of care to you and assume no responsibility for any statements, representations, warranties or otherwise made in the particulars and you should not rely on those in the particulars. 3. The particulars are produced in good faith are set out as a general guide only and do not constitute or form an offer or a contract or part thereof. 4. Any photographs, descriptions, plans, measurements, distances and any other details in the particulars are approximate estimates only taken as the property appeared at the time and should not be relied upon as factually accurate. 5. Fisher German assumes prospective purchasers/tenants have carried out inspections to satisfy themselves that the information in the particulars is correct.

Particulars dated June 2026. Photographs dated June 2026.



This brochure is fully recyclable