



# SIXTY LOMBARD

BANK • LONDON

EC3





A TRULY DISTINCTIVE ADDRESS

# Heritage reimaged

Welcome to Sixty Lombard, 25,500 sq ft of opulent work space just moments from Bank Underground Station.

Inspired by Art Deco elegance, its luxury finishes exude quiet grandeur throughout, complemented by hospitality-style amenities including a restaurant, gym, and roof terrace.

With efficient floors and sublime city views, this is a rare opportunity at the very heart of London's financial district.





Ground floor arrival and reception







# Rich in character

Behind its striking Grade II listed facade, an extraordinary refurbishment has brought the building's rich heritage into the modern age.



Spread across a basement, lower ground, mezzanine and five upper floors, the self-contained building offers 25,500 sq ft of high-specification office accommodation.

Inside, a grand reception welcomes you with double-height ceilings and a sweeping feature staircase, while Art Deco detailing runs throughout.





Bright, spacious interiors provide a refined yet comfortable environment for the mix of private and open-plan workspace. Amenities include a restaurant, a fully equipped gym, luxury changing rooms, a wellness room, and a communal roof terrace.







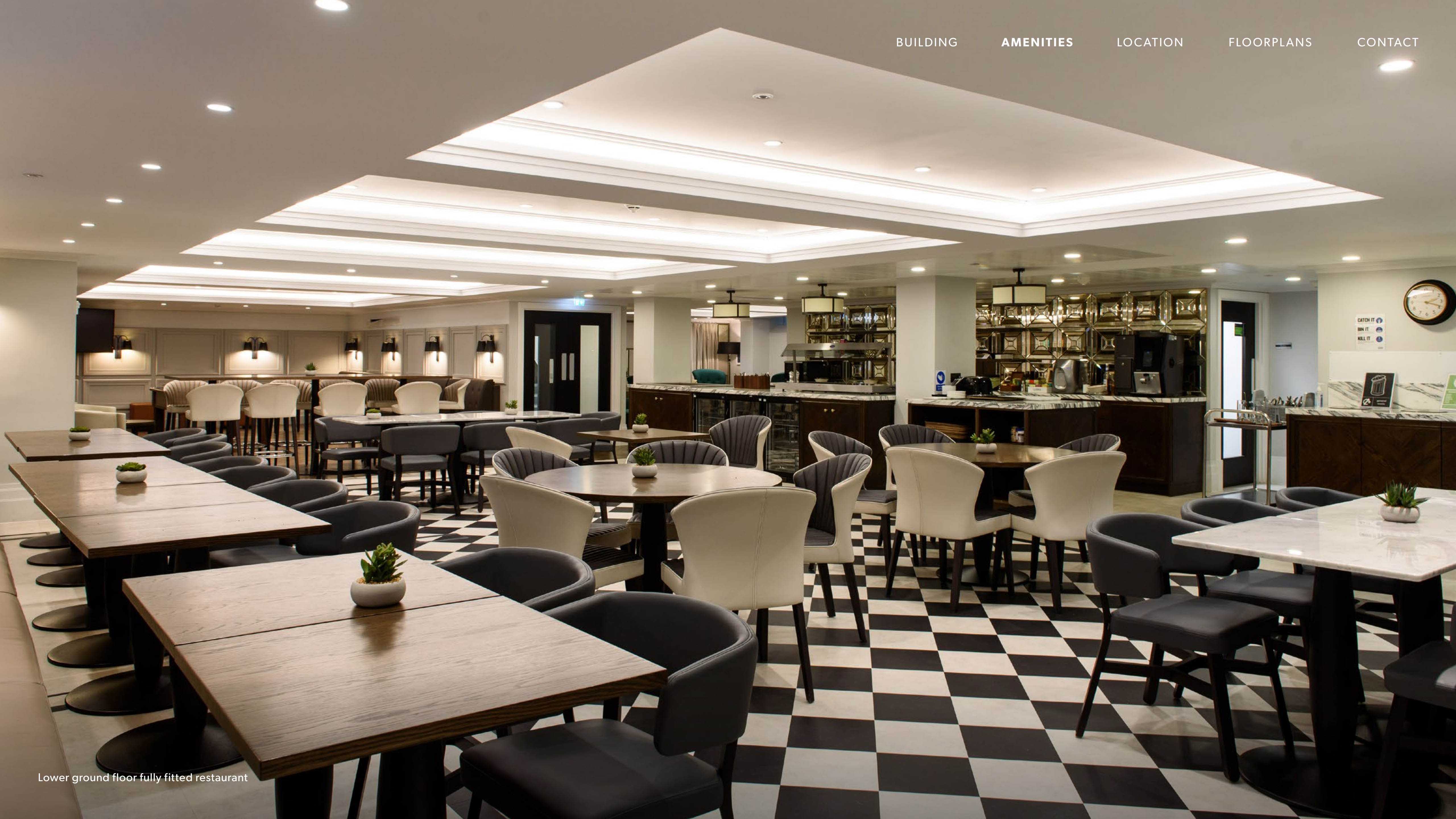
# The finer things

Sixty Lombard has everything you need in one place.

From a relaxation room for a quiet moment, to a fully-equipped gym to re-energise, a restaurant and a showstopping roof terrace to unwind above the city.







Lower ground floor fully fitted restaurant





# Wellness facilities

## ESCAPE THE OFFICE

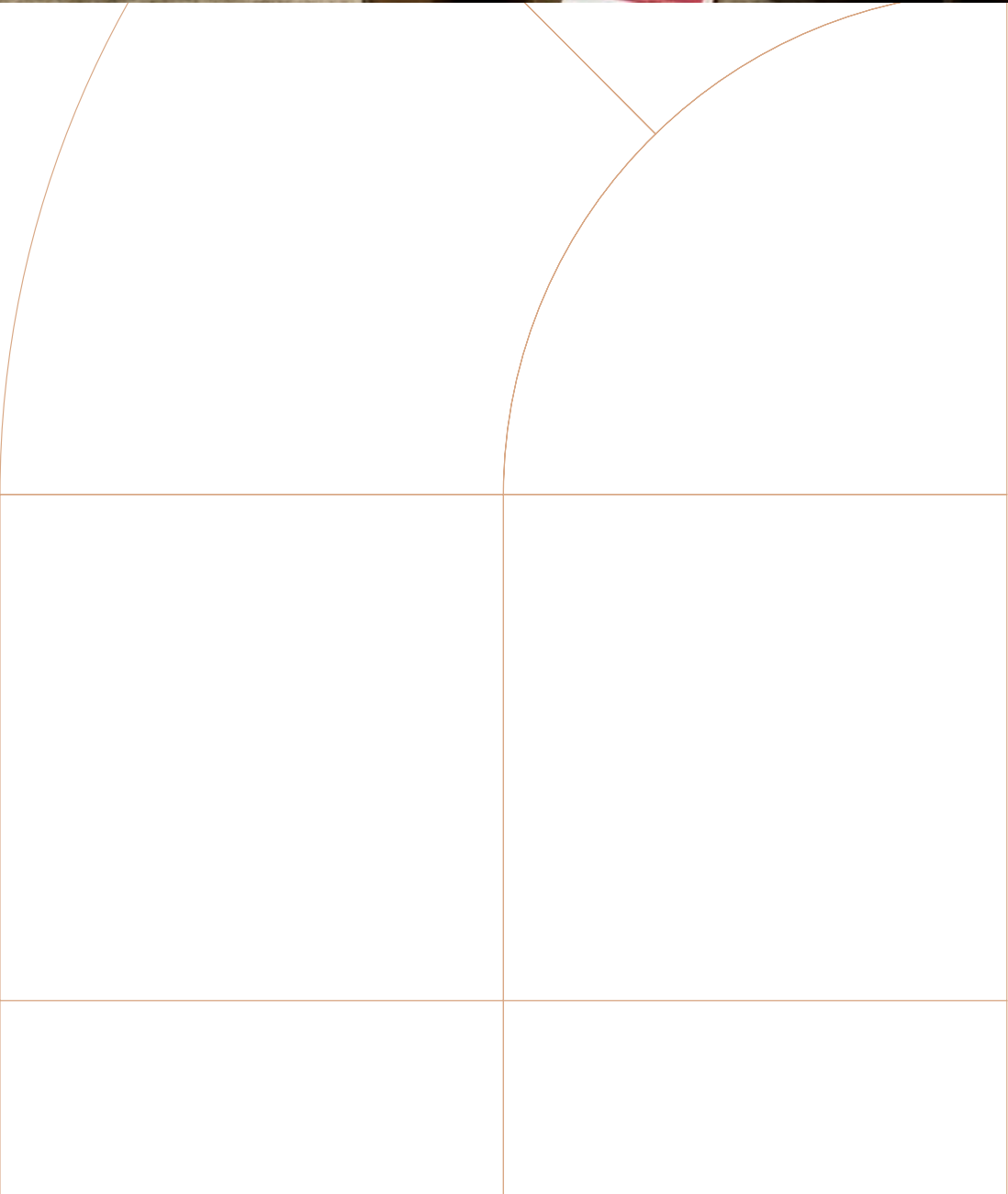
Take in the sunset views over the City as you clock off work and unwind on the roof terrace.

## WORK IN, AND WORK OUT

A state-of-the-art gym with luxury male/female showers and changing facilities.

## PRESS PAUSE ON YOUR DAY

An employee relaxation room to escape the noise and enjoy some peace and quiet.





# London at your fingertips

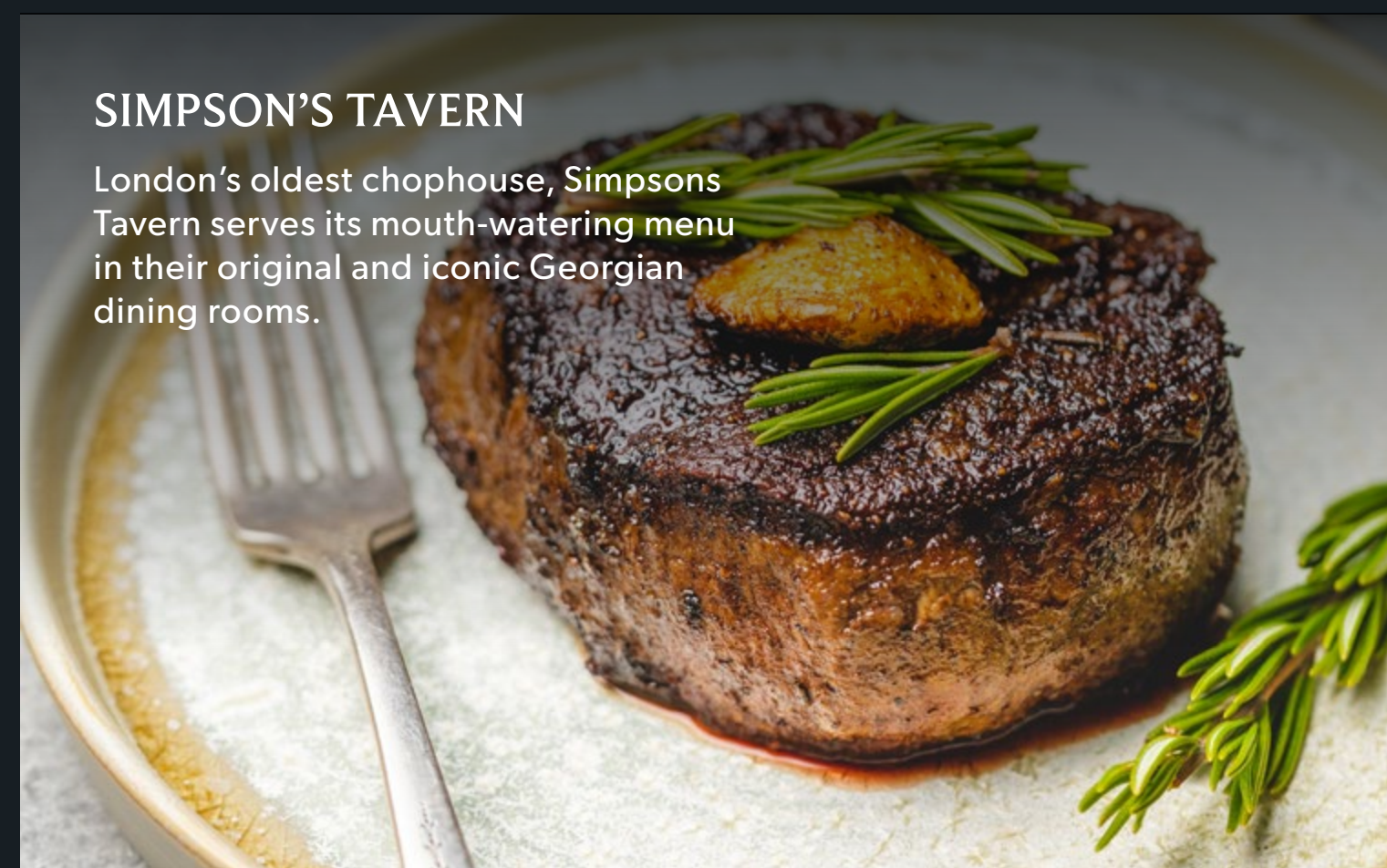
Situated in the City of London,  
Sixty Lombard is at the very heart of  
London's financial district.

Moments from the Bank of England and Bank station,  
Sixty Lombard is perfectly located to enjoy some of the  
capital's finest restaurants and luxury retail destinations.



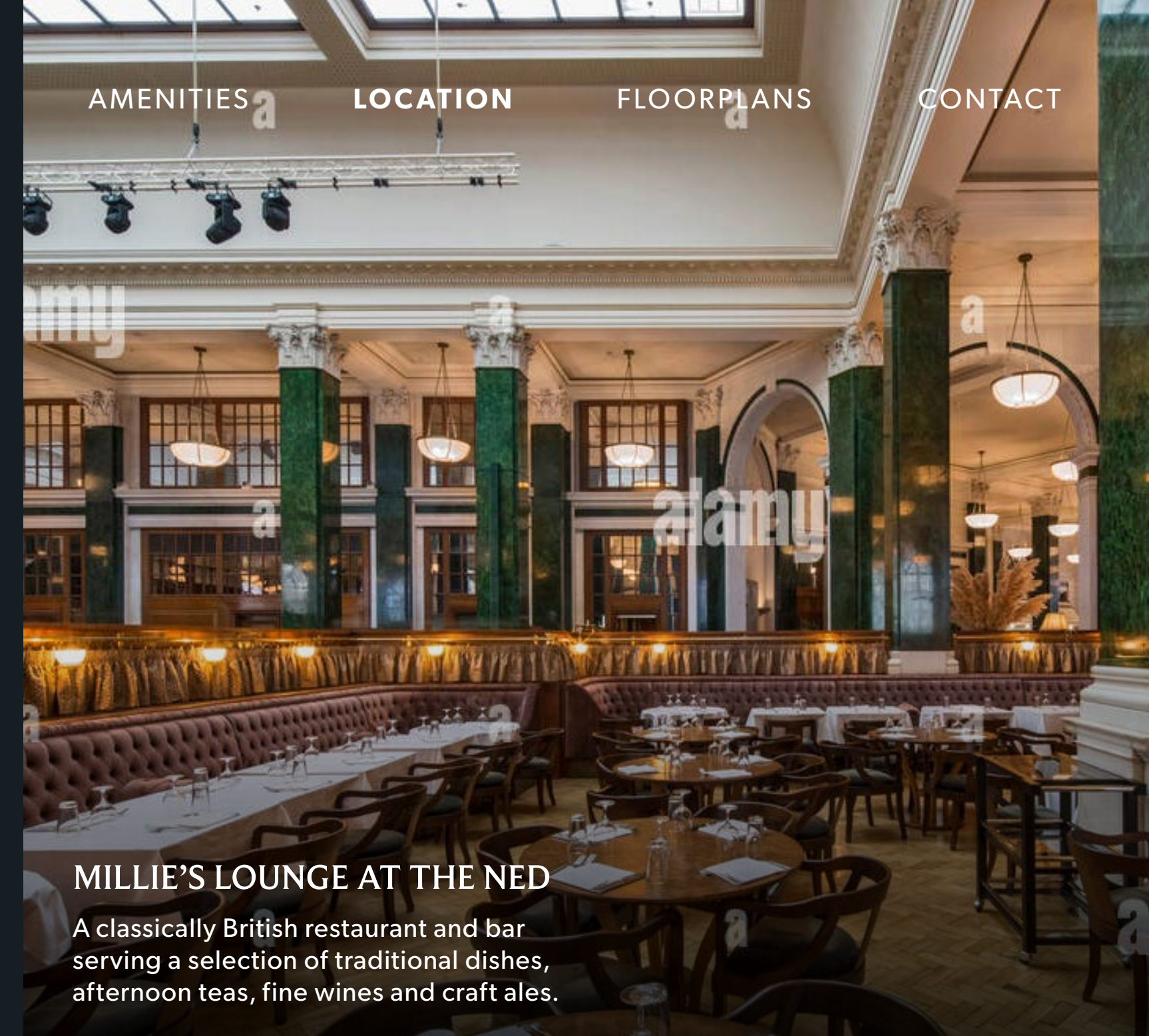
## MERCHANT HOUSE BAR

The award-winning Merchant House is hidden down a charming alley in the heart of the City and is home to over 600 whiskies, 400 rums and 400 gins.



## SIMPSON'S TAVERN

London's oldest chophouse, Simpsons Tavern serves its mouth-watering menu in their original and iconic Georgian dining rooms.



## MILLIE'S LOUNGE AT THE NED

A classically British restaurant and bar serving a selection of traditional dishes, afternoon teas, fine wines and craft ales.



## HISPANIA

Ideal for working lunches, Hispania offers authentic Spanish tapas, cured meats and wide selection of wines and sherries.





# Connections

Perfectly positioned 1 minute walk from Bank Station and 3 minutes to Cannon Street Station, Sixty Lombard offers unbeatable connectivity in the heart of the City.

1 MIN

— **Liverpool Street**



6 MINS

— **Tottenham Court Road**



5 MINS

— **London Bridge**



6 MINS

— **Canary Wharf**



8 MINS

— **King's Cross St. Pancras**



8 MINS

— **Stratford**



9 MINS

— **Bond Street**



21 MINS

— **London City Airport**





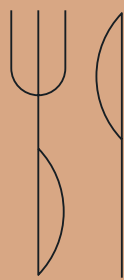
Sixty Lombard comprises of the following accommodation:

FLOOR	AREA (SQ FT)
Fifth	858 + 557 terrace
Fourth	2,948
Third	3,681
Second	3,887
First	3,804
Mezzanine	2,106
Ground	2,522
Lower Ground	3,465
Basement	2,232
TOTAL	25,503

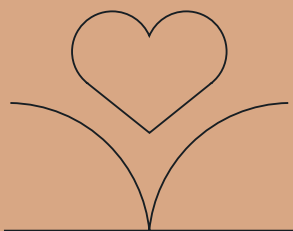




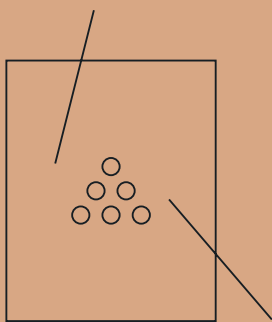
# Specification



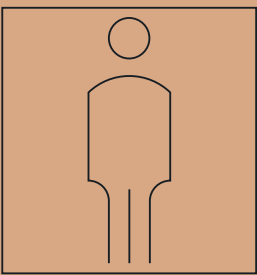
Fully fitted restaurant facilities



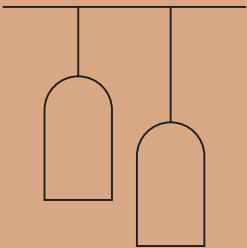
Spacious wellness room



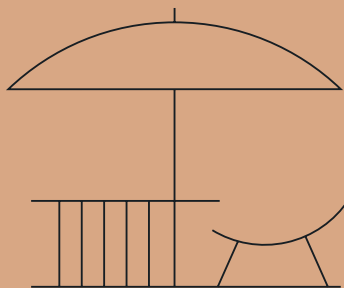
Billiards Room



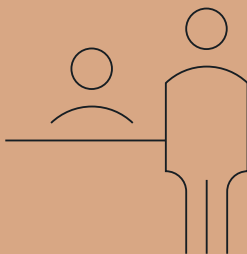
1:10 person per sq m occupancy



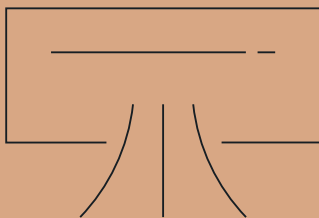
Mix of metal suspended ceiling, feature plaster ceiling and plasterboard ceiling finish with LED lighting.



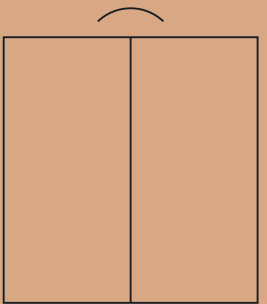
South facing generous roof terrace on Level 5



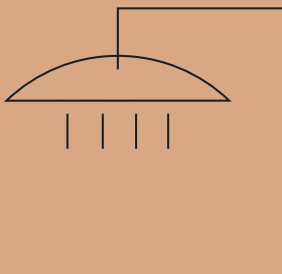
Large entrance reception with concierge furnishing



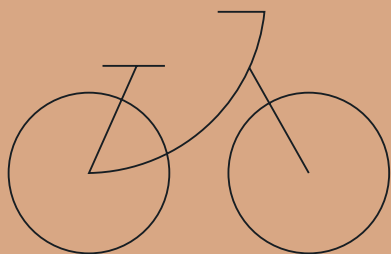
4 pipe fan coil air conditioning natural ventilation



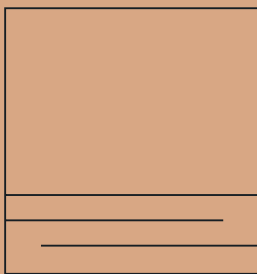
2 passenger lifts and 1 firefighting lift



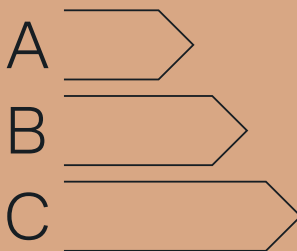
4 showers, WC & changing facilities in basement



24 bike spaces



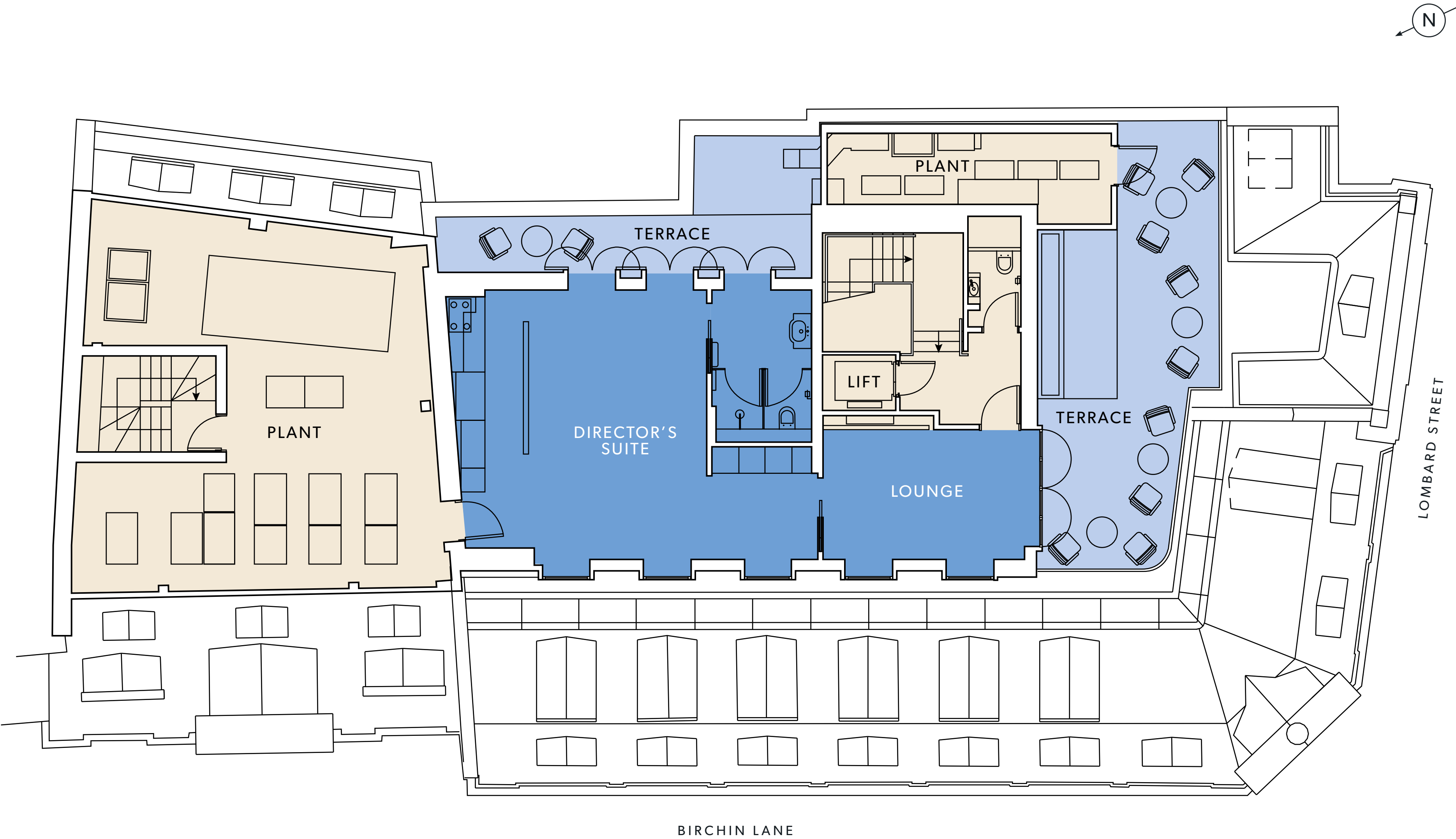
Raised floor (100mm void)



BREEAM Very Good rating EPC Rating B (32)

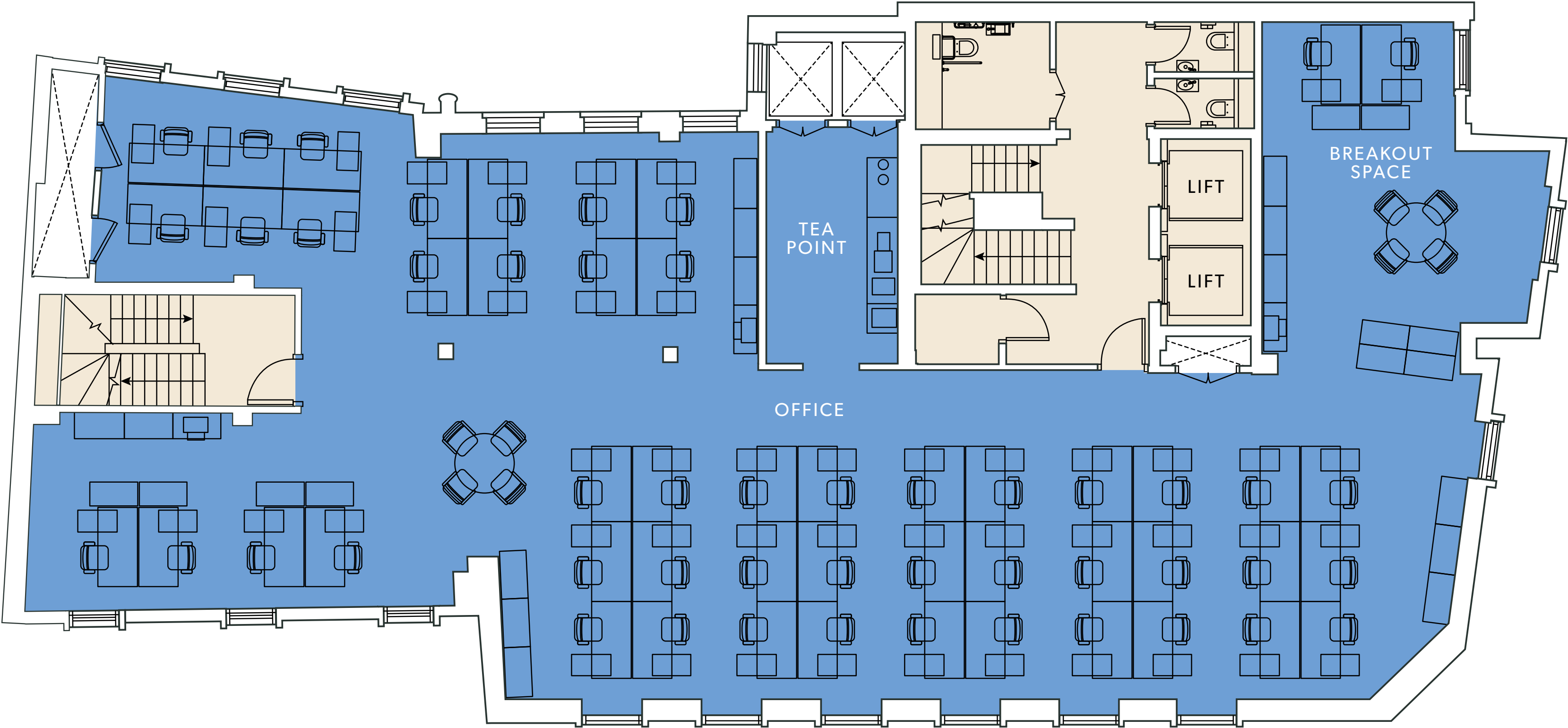


- Fifth
- Fourth
- Third
- Second
- First
- Mezzanine
- Ground
- Lower Ground
- Basement





- Fifth
- Fourth
- Third
- Second
- First
- Mezzanine
- Ground
- Lower Ground
- Basement

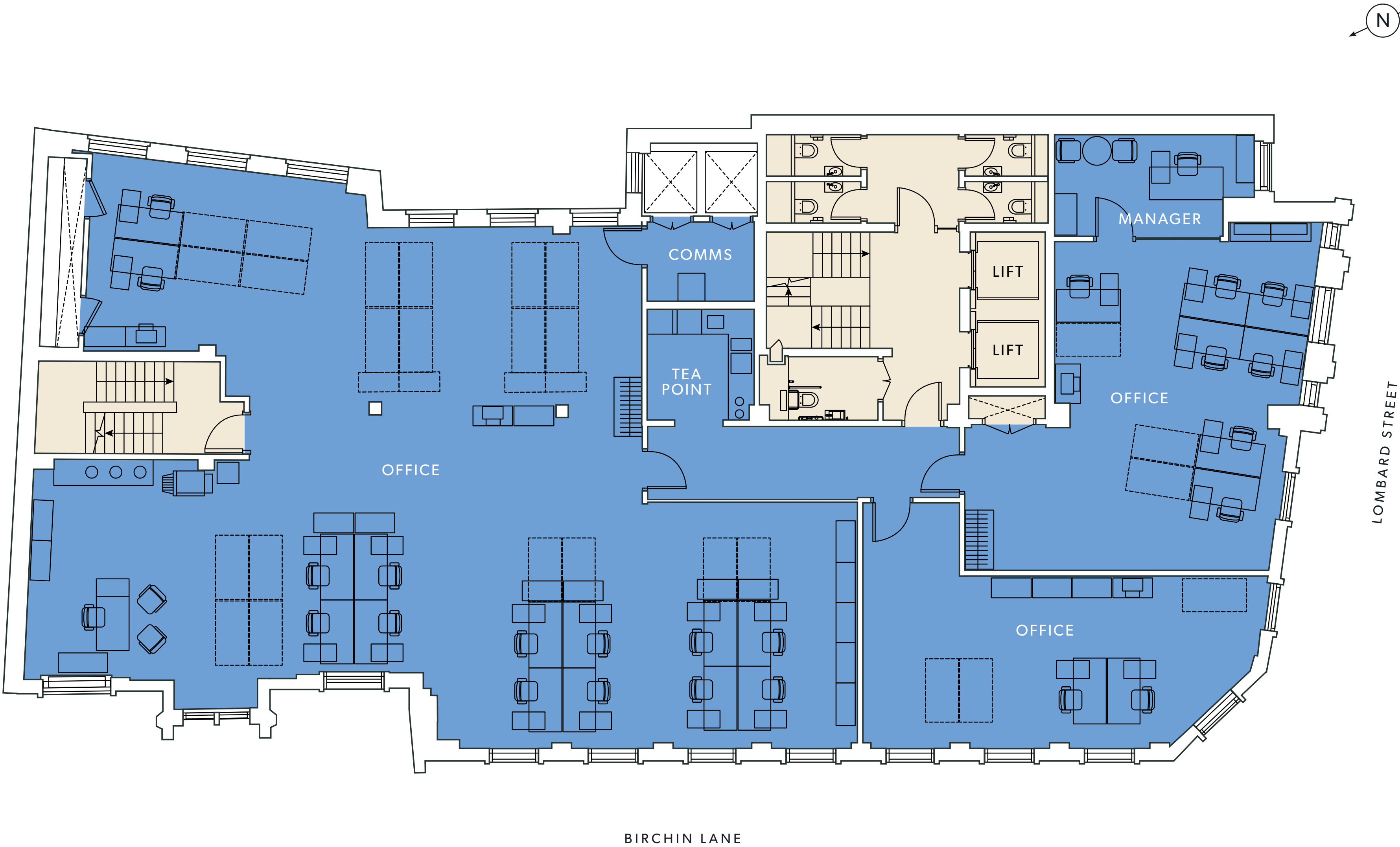


LOMBARD STREET

BIRCHIN LANE

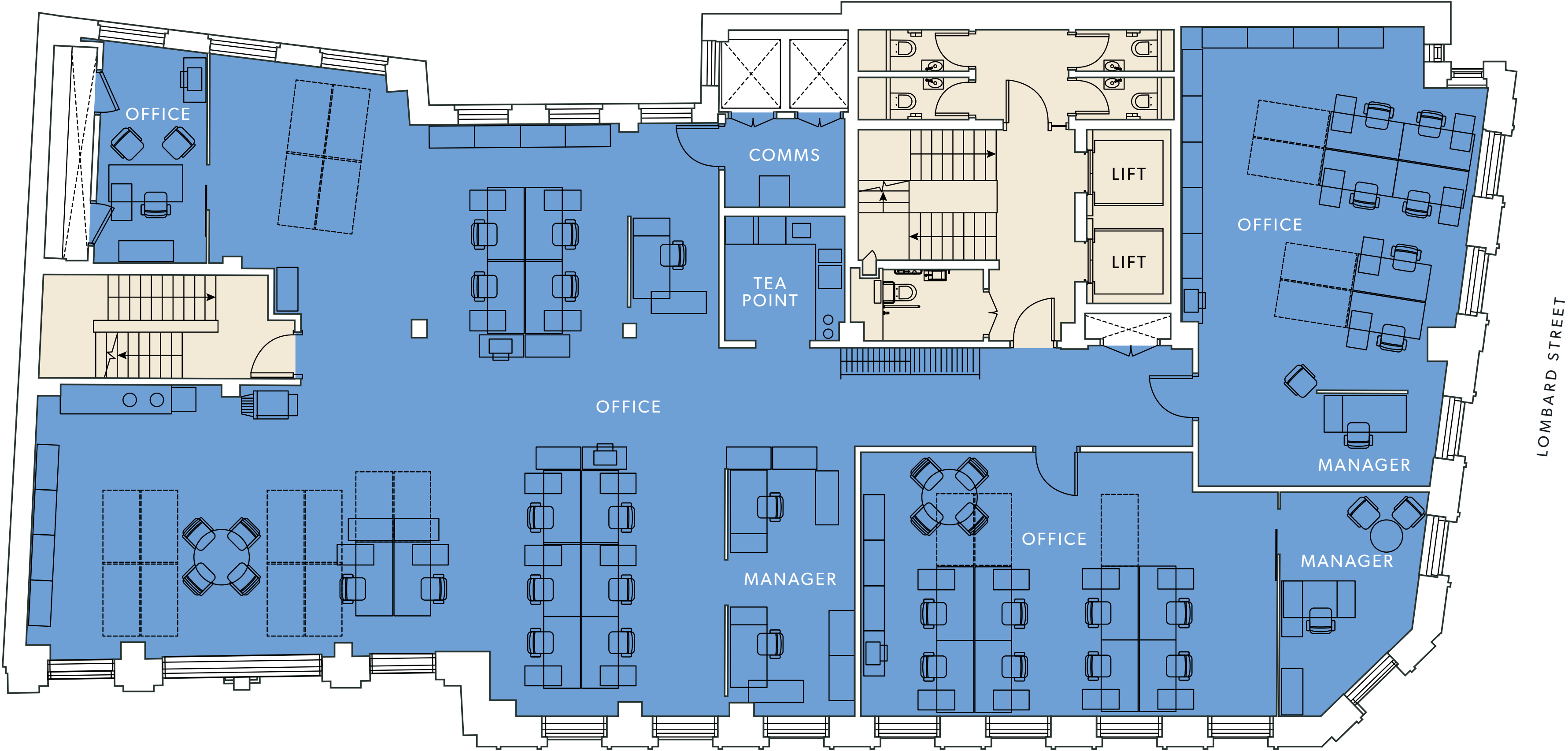


- Fifth
- Fourth
- Third
- Second
- First
- Mezzanine
- Ground
- Lower Ground
- Basement





- Fifth
- Fourth
- Third
- Second
- First
- Mezzanine
- Ground
- Lower Ground
- Basement





- Fifth
- Fourth
- Third
- Second
- First
- Mezzanine
- Ground
- Lower Ground
- Basement

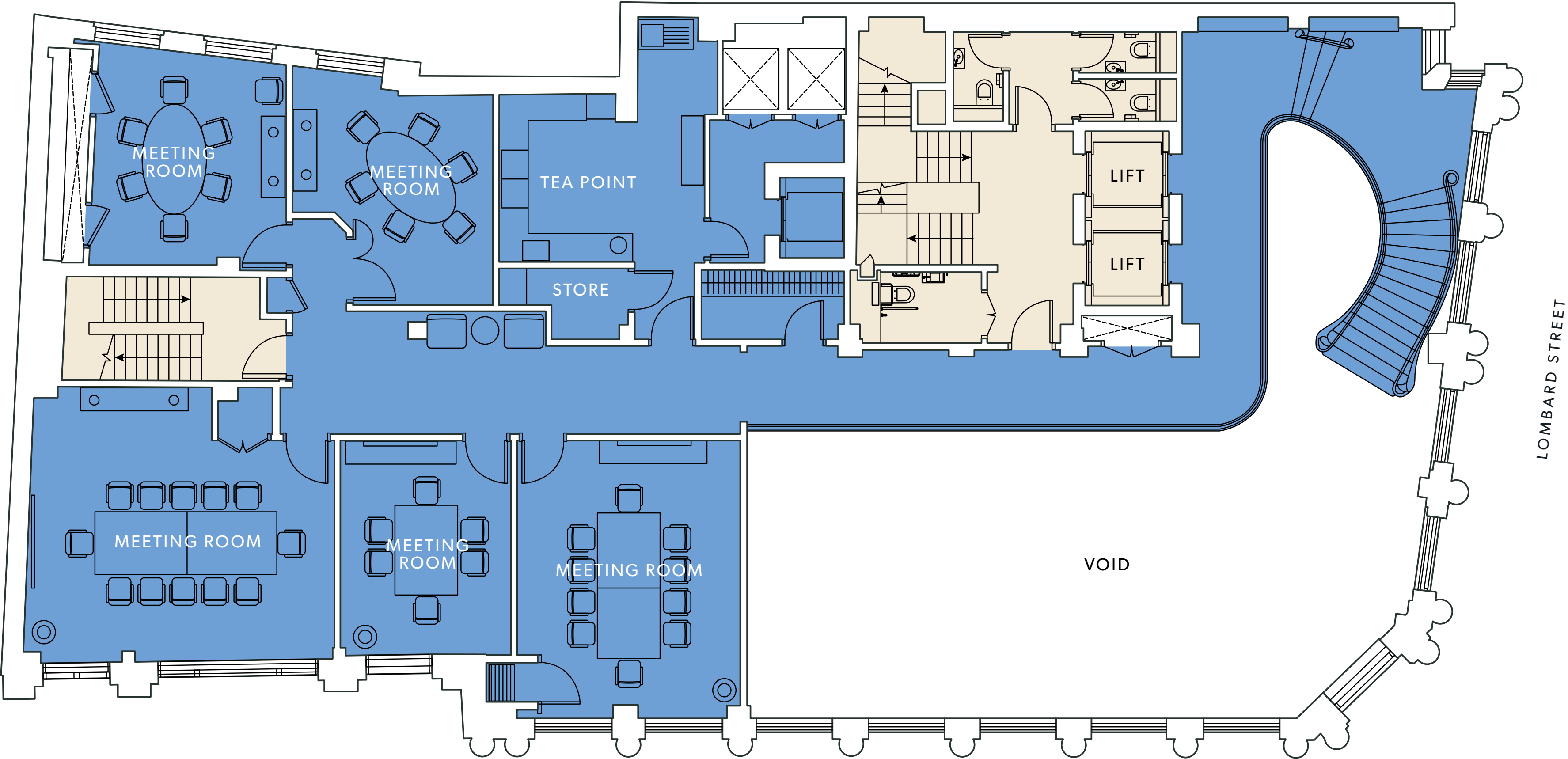


BIRCHIN LANE

LOMBARD STREET



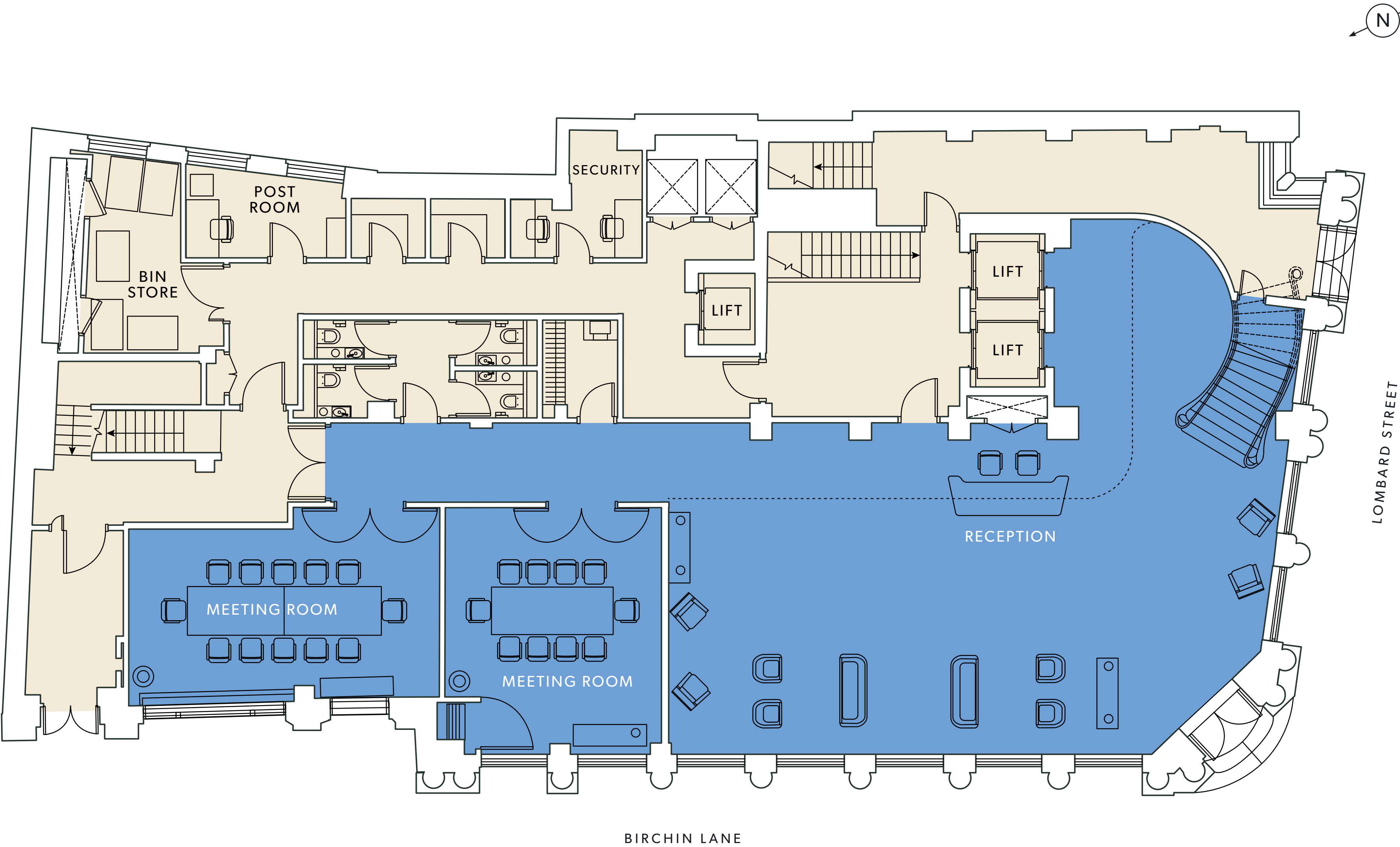
- Fifth
- Fourth
- Third
- Second
- First
- Mezzanine
- Ground
- Lower Ground
- Basement



BIRCHIN LANE

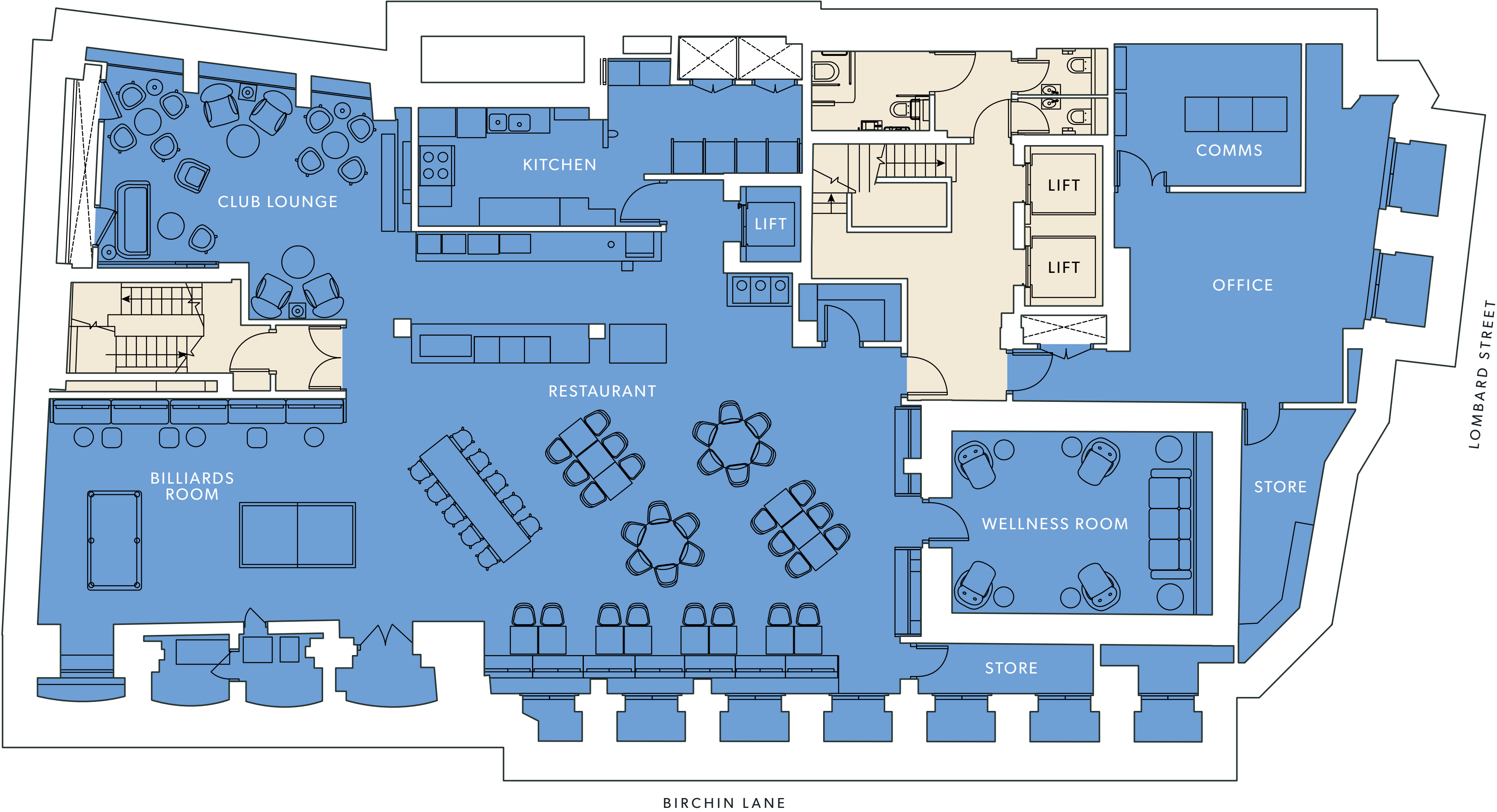


- Fifth
- Fourth
- Third
- Second
- First
- Mezzanine
- Ground
- Lower Ground
- Basement



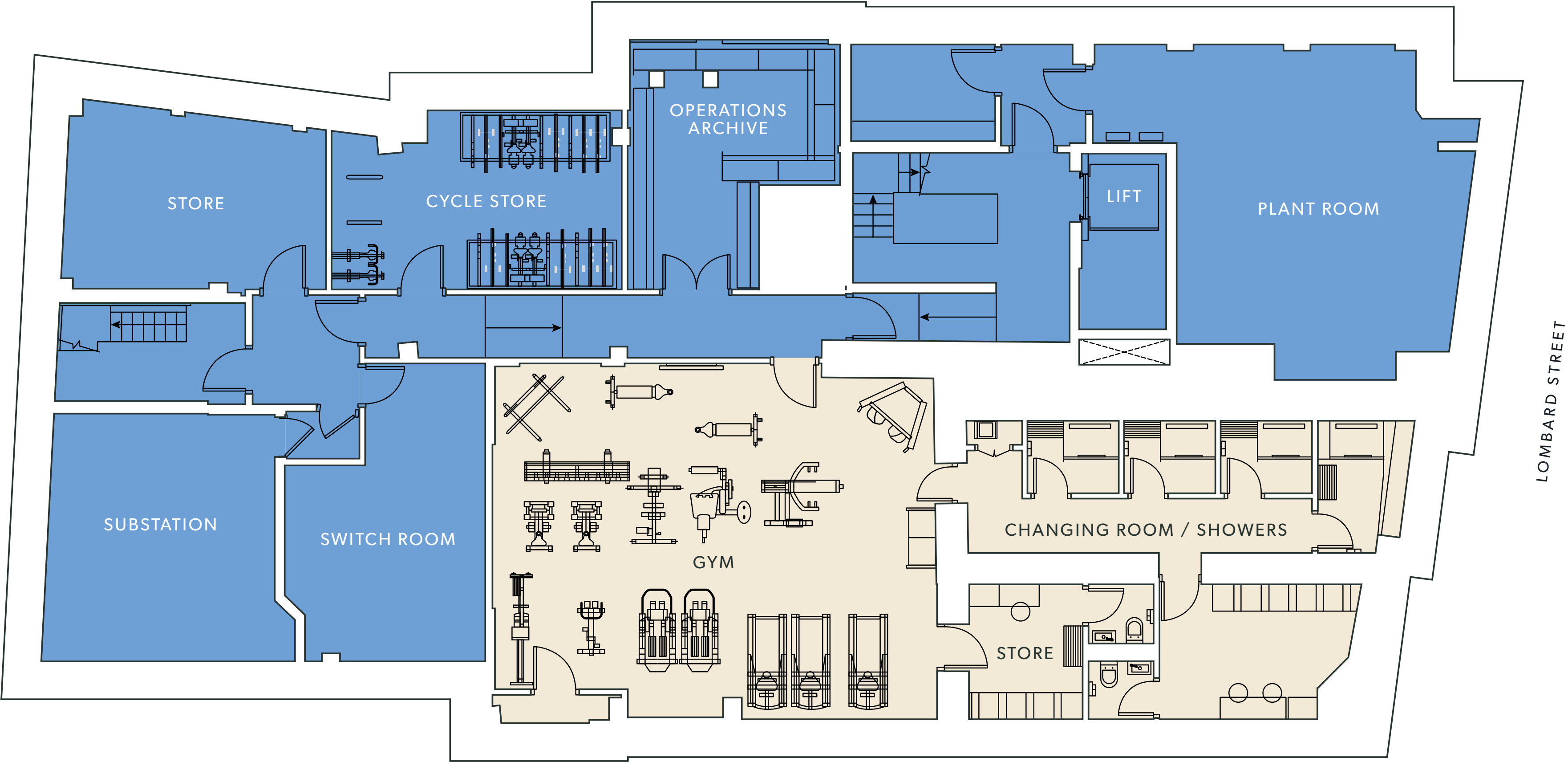


- Fifth
- Fourth
- Third
- Second
- First
- Mezzanine
- Ground
- Lower Ground
- Basement





- Fifth
- Fourth
- Third
- Second
- First
- Mezzanine
- Ground
- Lower Ground
- Basement





# Terms

The property is available to Let as a whole for a term by arrangement. Alternatively, consideration may be given to the sale of the freehold.

For further information please contact Sole Agents:



**Simon Crotty**  
+44 7826 947 267  
Simon.Crotty@jll.com

**Claire Allen**  
+44 7872 107 543  
Claire.Allen@jll.com

All areas are approximate, measured in according with RICS Code of measuring practice 6th edition. The building may present anomalies in relation to survey/drawn plans. This information must not be relied upon to form the basis of any offer or contract. JLL on their behalf and for the Vendors or Lessors of this property whose Agents they are, give notice that: 1. These particulars are set out as a general outline only for guidance to intending Purchasers or Lessees, and do not constitute any part of an offer or contract. 2. Details are given without any responsibility and any intending Purchasers, Lessees or Third Parties should not rely on them as statements or representations of fact, but must satisfy themselves by inspection or otherwise as to the correctness of each of them. 3. No person in the employment of JLL has any authority to make any representation or warranty whatsoever in relation to this property. Subject to contract. Designed by J2.net. October 2025.

