



26 FINSBURY SQUARE EC2

Available now: newly refurbished, fully fitted and furnished office space

# Striking & Stylish

26 Finsbury Square is a striking corner building overlooking the iconic Finsbury Square. There is currently up to 29,129 sq ft of contemporary workspace available across multiple floors including a range of fully fitted spaces. The building features an impressive double height reception with 24-hour commissionaire and end-of-trip facilities.





Diverse rolling events program on the doorstep, including bowls, ice skating, street food, and more.



# Finsbury Square

# Building Credentials



Excellent connectivity to Moorgate, Liverpool St (Crossrail) and Old St



Range of newly refurbished fully fitted and furnished spaces



Bicycle storage, lockers and showers



Direct access to green open space



Finsbury Square rolling events programme and pop up F&B



BREEAM - Very good



Prominent corner position overlooking Finsbury Square



6th floor arrival



Ground floor reception

# Availability

Floor	Sq ft	Availability	Specification
6th	8,320	Available now	Fully fitted and furnished
3rd	8,302	Available now	Fully fitted and furnished
1st	6,858	Available now	Fully fitted and furnished
LG	5,649	Available now	New CAT A
<b>Total</b>	<b>29,129</b>		



6th floor kitchenette



1st floor workspace



3rd floor meeting room



6th floor meeting room



6th floor kitchenette



3rd floor hot desking



3rd floor breakout

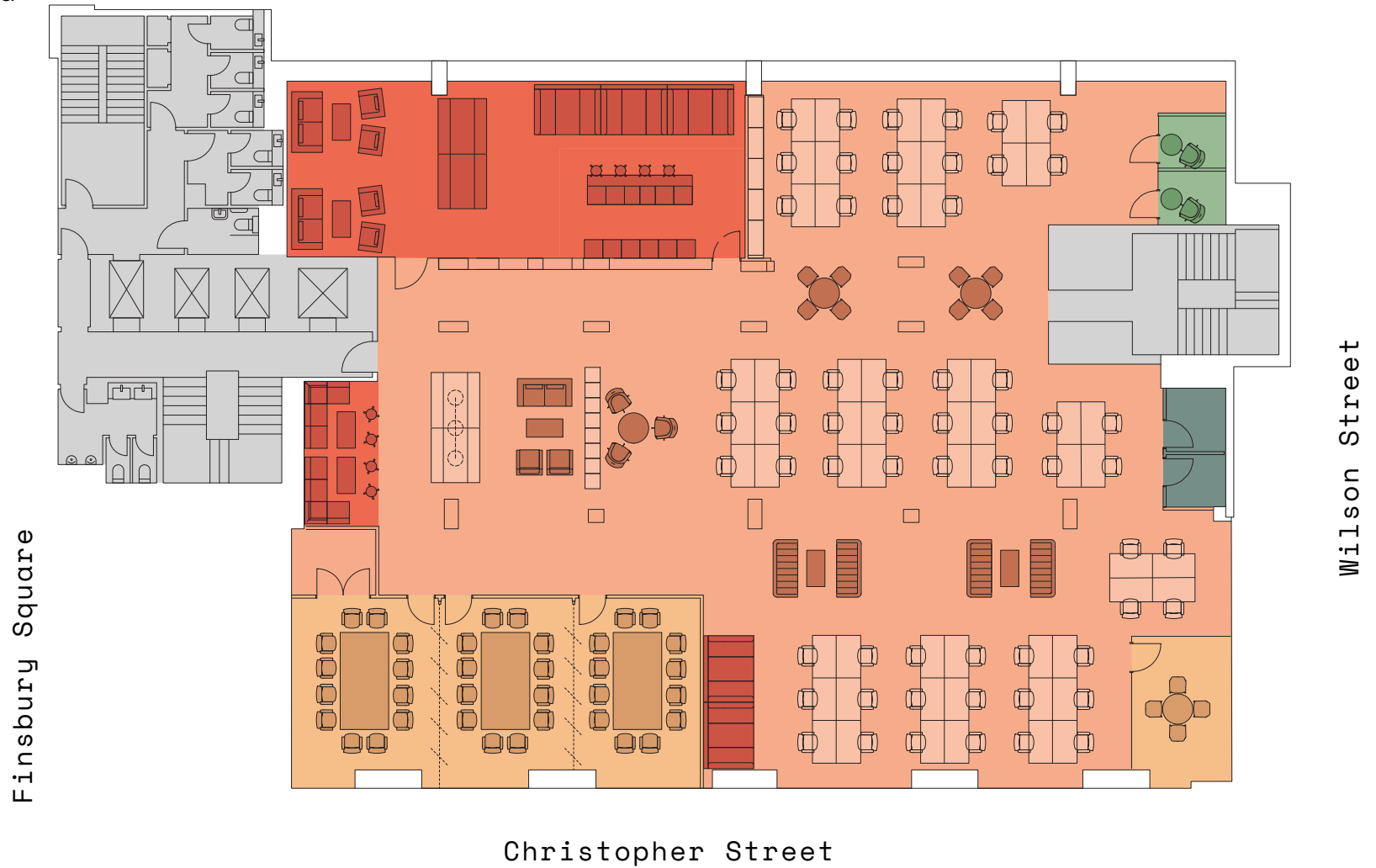


3rd floor workspace

# 1st Floor

Fully fitted and furnished  
6,858 sq ft / 637.1 sq m

- 60 Desks
- 4 Meeting rooms
- 6 Informal meeting areas
- 2 Comms & storerooms
- 2 Phone booths
- 3 Kitchen / breakout areas



N

Christopher Street

Wilson Street

Finsbury Square

# 3rd Floor

Fully fitted and furnished  
8,302 sq ft / 771.3 sq m

- 52** Desks
- 5** Meeting rooms
- 2** Executive offices
- 1** Reception
- 1** Comms & storeroom
- 1** Phone booth
- 2** Kitchen / breakout areas



N

# 6th Floor

Part fitted  
8,320 sq ft / 773 sq m

- 58** Desks
- 3** Meeting rooms
- 1** Executive office
- 2** Comms & storerooms
- 1** Reception
- 2** Kitchen / breakout areas

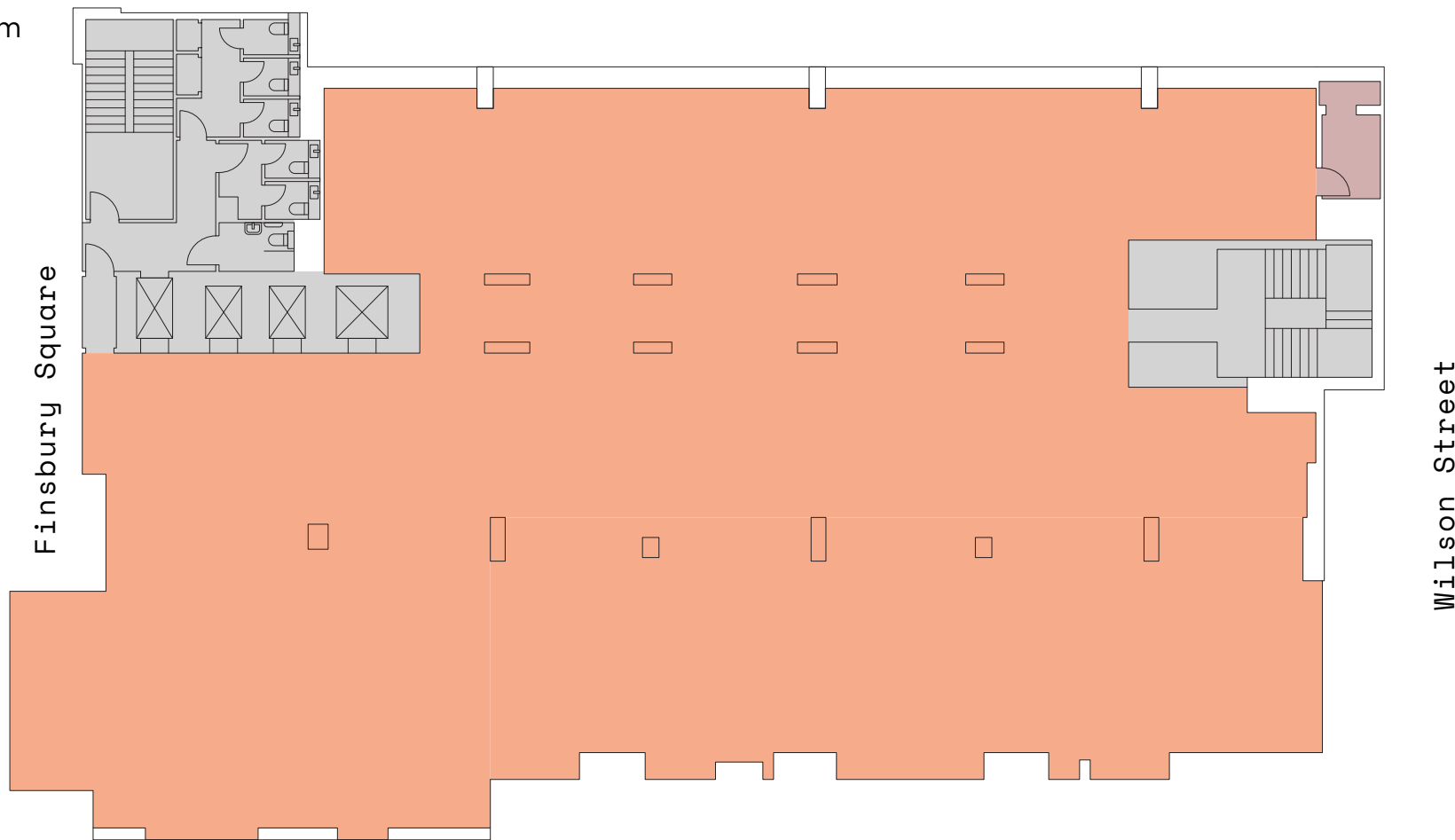


N

# LG Floor

New CAT A  
5,649 sq ft / 524.8 sq m

Available space



N

Christopher Street

Finsbury Square

Wilson Street

The building is perfectly placed between The City and lively Shoreditch. With an eclectic mix of restaurants, street food markets and vibrant cafés, the location is buzzing. The area is home to some of London's best health clubs with Barry's Bootcamp, 1 Rebel and Thirdspace all within close proximity. London Liverpool Street, Moorgate and Old Street Stations are all within a 6-minute walk.



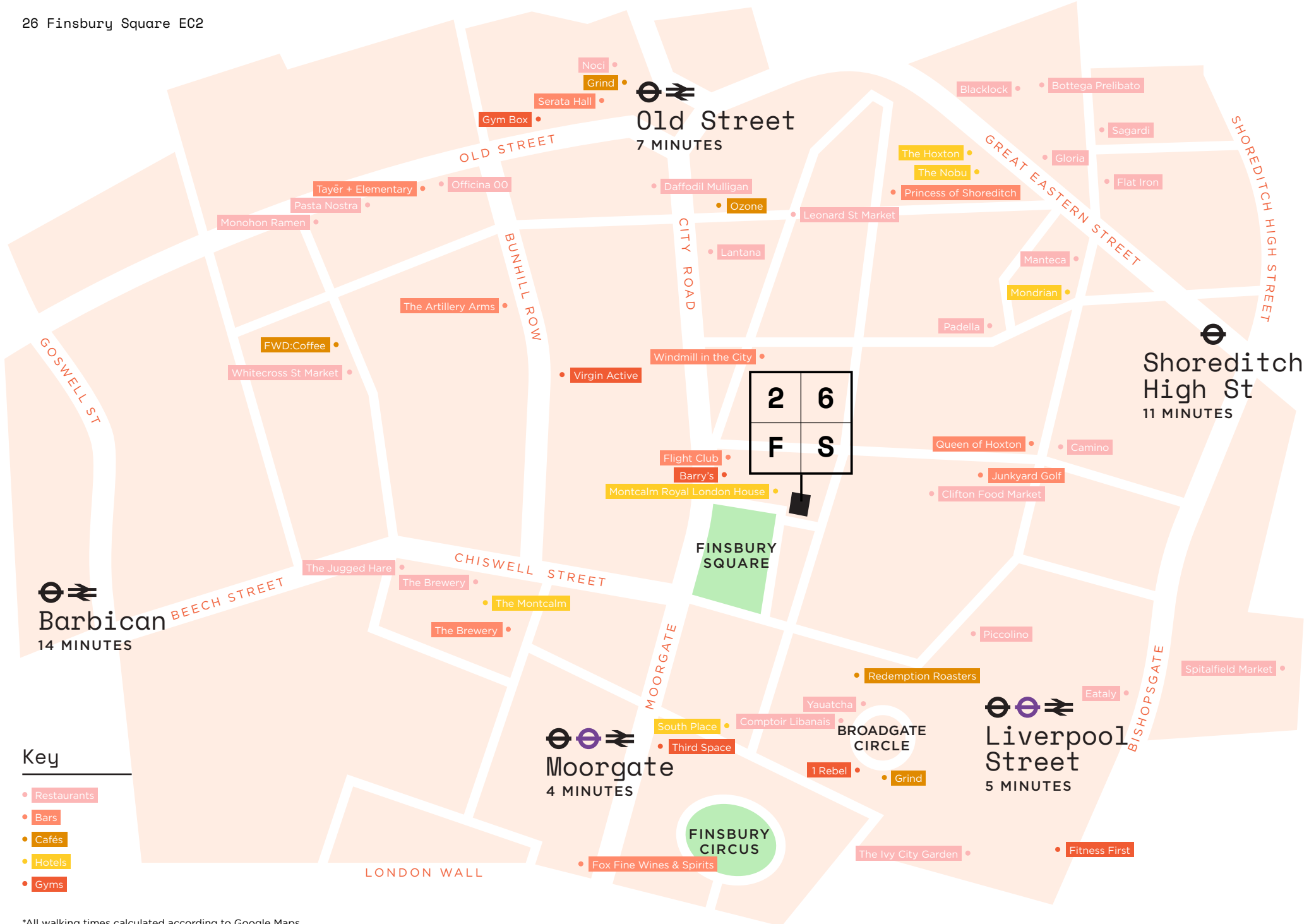
# Shoreditch meets The City



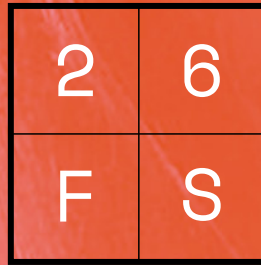
Broadgate Circle

2 6  
F S

26 Finsbury Square EC2



\*All walking times calculated according to Google Maps



26 FINSBURY SQUARE



---

Charlie Collins

07759 121 247

[charlie.collins@colliers.com](mailto:charlie.collins@colliers.com)

Tom Marsden

07904 980 073

[tom.marsden@colliers.com](mailto:tom.marsden@colliers.com)

Matthew Mycock

07976 920 529

[matthew.mycock@jll.com](mailto:matthew.mycock@jll.com)

Hugh Tayler

07801 959 513

[hugh.tayler@jll.com](mailto:hugh.tayler@jll.com)

Ben Rainbow

07909 487 189

[ben.rainbow@colliers.com](mailto:ben.rainbow@colliers.com)

Alfie Barclay

07704 672 934

[alfie.barclay@jll.com](mailto:alfie.barclay@jll.com)

Important notice relating to the Misrepresentation Act 1967 and the Property Misdescriptions Act 1991: (i) the particulars are set out as a general outline only for guidance of intending purchasers or lessees and do not constitute, nor constitute part of, an offer or contract (ii) all descriptions, dimensions, references to condition and necessary permission for use and occupation, and other details are given in good faith and are believed to be correct, but any intending purchasers or occupiers should not rely on them as statements or representations of fact, but must satisfy themselves by inspection or otherwise as to the correctness of each of them. April 2026

Marketing: [Stuart Chapman Design](#)