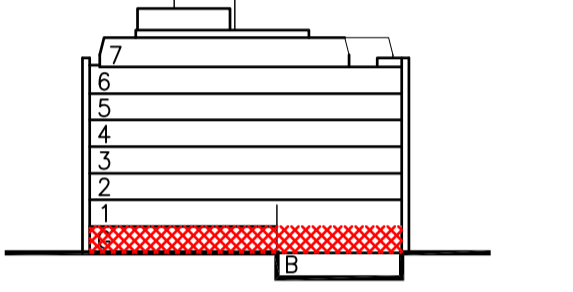
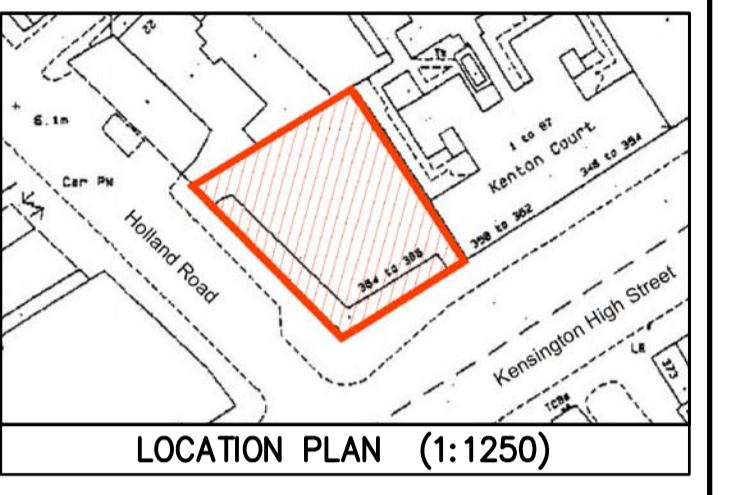


Copyright
 This drawing is the copyright of McFarlane Latter Chartered Architects and reproduction by any means is not permitted without our prior written consent.
 © McFarlane Latter Architects
 3 Clifford Street, London W1S 2LF, UK

- Notes**
1. No responsibility will be accepted for the presentation or accuracy of information reproduced from electronic data exchange.
 2. The electrical installation is to comply with the latest edition of the IEE regulations and current amendments.
 3. The drainage installation is to be completed to the satisfaction of the Local Authority.
 4. Do not scale this drawing. Figured dimensions to be checked on site.



Revisions

No.	Description

CURRENT PLAN: 24/07/14

UNIVERSAL MUSIC GROUP
 364 KENSINGTON HIGH STREET
 LONDON W14

**GROUND FLOOR PLAN
 FURNITURE & PERSONNEL**

File Name	\UNIVERSAL MUSIC\KHS 2014\KH14-81.DWG		
Drawn	DT	Scale	⊙ A1 1:100
Date	24/07/14	Dwg No.	KH14.86

McFARLANE LATTER
 ARCHITECTS

3 Clifford Street, London W1S 2LF
 Tel: 020 7287 5565 Fax: 020 7287 5257
 www.mcfarlanelatter.co.uk

KENSINGTON HIGH STREET

HOLLAND ROAD