

VICTORIA HEALTH CENTRE OFFICES/ MEDICAL



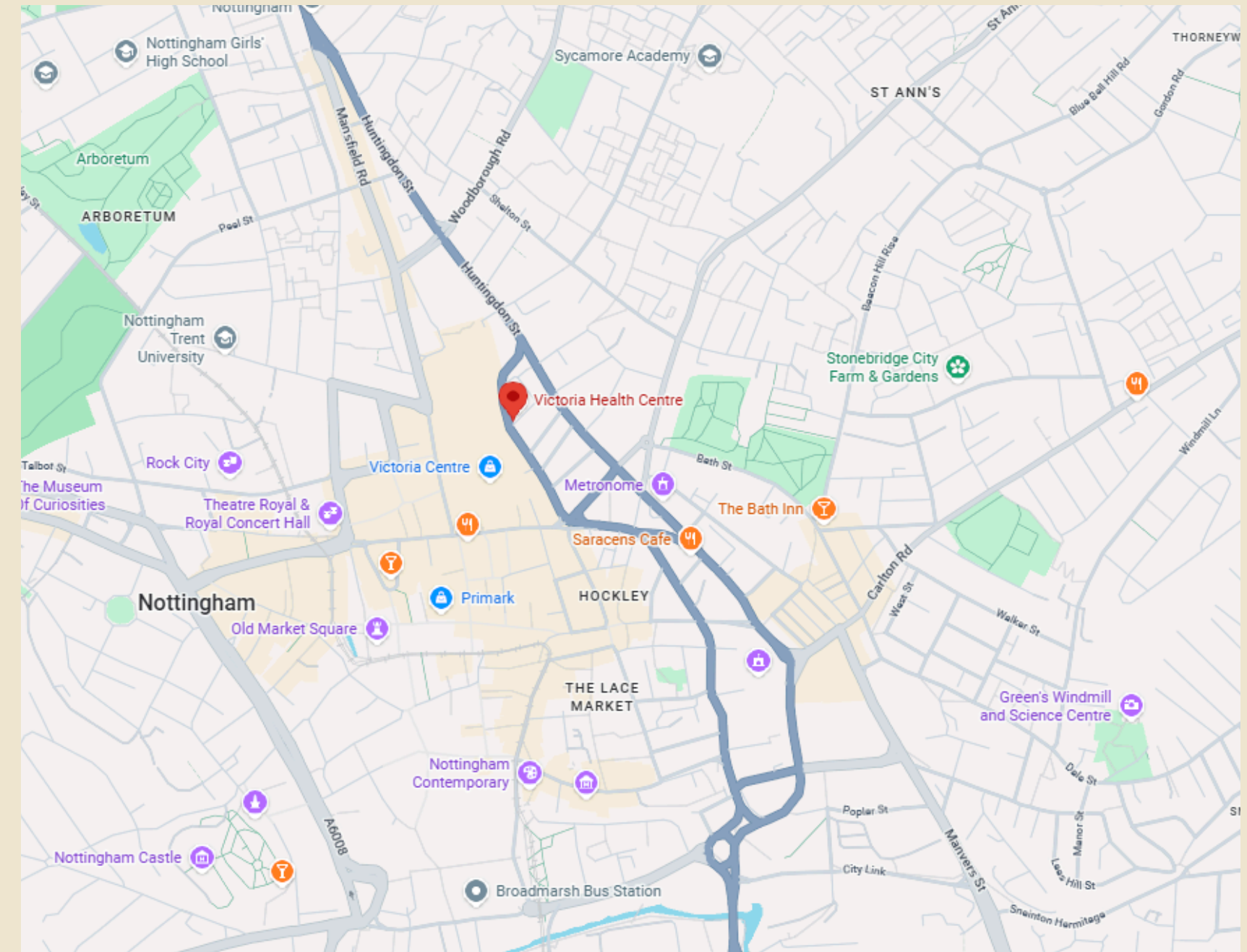
Victoria Health Centre, Glasshouse Street,
Nottingham, NG1 3LW

TO LET

YOUR PROPERTY PARTNER OF CHOICE

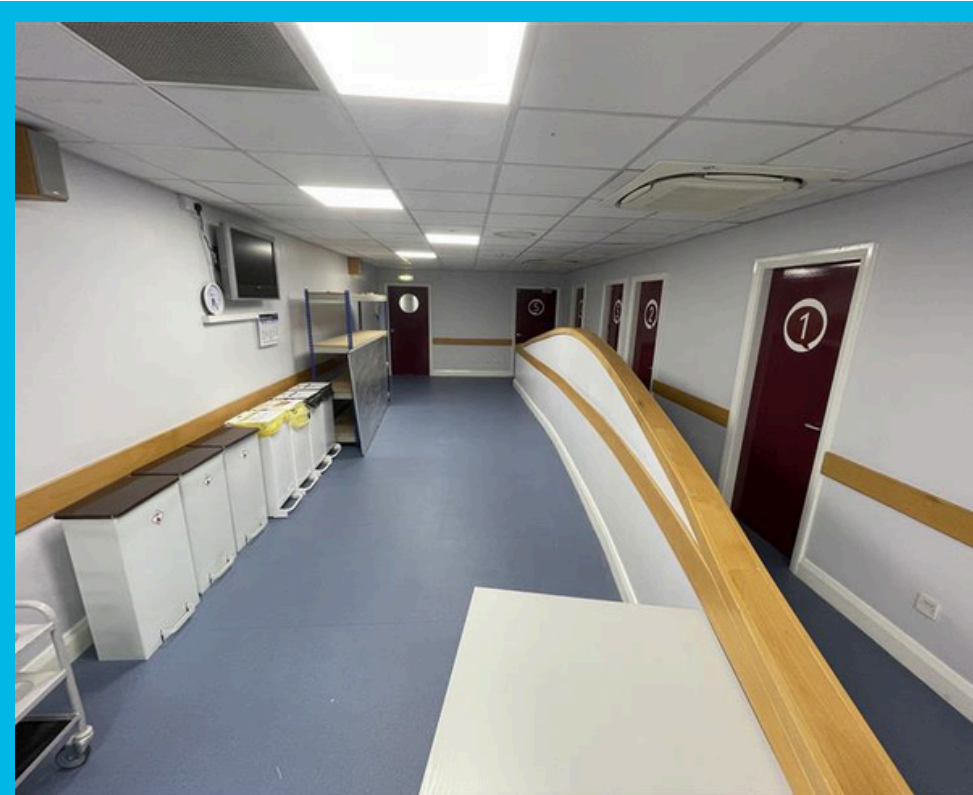
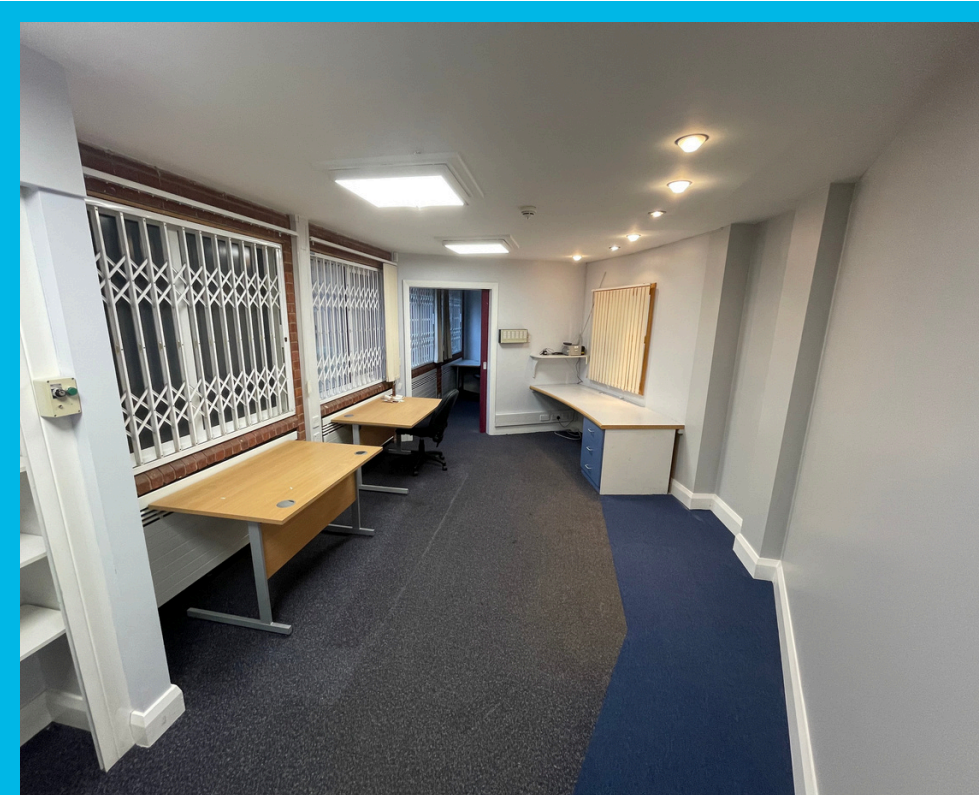
Ground Floor Medical / office accommodation available in a central Nottingham location

- Available Immediately
- Suitable for medical, clinical, office or professional uses
- Secure access with rear gated staff car parking
- Strong connectivity Via A60, A610 and A453 with links to the M1 motorway
- Located in a recognised medical and professional setting
- Ground floor office accommodation
- Excellent motorway access
- <https://w3w.co/supply.activism.cabin>



TO LET

Use Class (E)



PROPERTY OVERVIEW

DESCRIPTION

Ground floor office accommodation is available to let within Victoria Health Centre, offering office and clinical space within an established healthcare building. Internally, the accommodation provides a series of smaller consultancy or treatment rooms alongside staff office accommodation and a dedicated reception. The layout is well suited to a medical, therapy, counselling, or professional occupiers with flexibility for reconfiguration if required. The property benefits from access to a secure rear car park for staff use.

LOCATION

Victoria Health Centre is prominently located on Glasshouse Street in Nottingham city centre, within close proximity to a wide range of amenities. The property benefits from excellent transport connectivity, with Nottingham Railway Station within walking distance providing direct services to major cities and regional centres. The area is well served by Nottingham's tram and bus network, and there is easy access to the A60, A610, and A453, linking to the wider city and the M1 motorway

SUMMARY

Available Size	132.83 sq m / 1,429 sq ft
Rent	POA
Business Rates	Upon Enquiry
Total Service Charge	Upon Enquiry Excluding Business Rates
Car Parking	Car Parking Available
EPC Rating	D

ACCOMMODATION

The accommodation comprises the following areas

Name	sq ft	sq m	Availability
Ground Floor	1,429	132.83	Available
Total	1,429	132.83	





VICTORIA HEALTH CENTRE OFFICES/ MEDICAL

Viewing & Further Information



Daniel Clinch
07947 990224
daniel.clinch@alignpropertypartners.co.uk



Julie Anderson
07968 799 734
julie.anderson@alignpropertypartners.co.uk

View Properties [Here](#)

