

GREAT WESTERN STUDIOS

A space for business &
creativity, in Notting Hill.

Studios available –
1,000 - 7,000 square foot.

A RANGE OF FLEXIBLE LEASING OPTIONS AVAILABLE EITHER AS INDIVIDUAL UNITS OR AS A WHOLE.

Terms upon request.



OUR SPACES

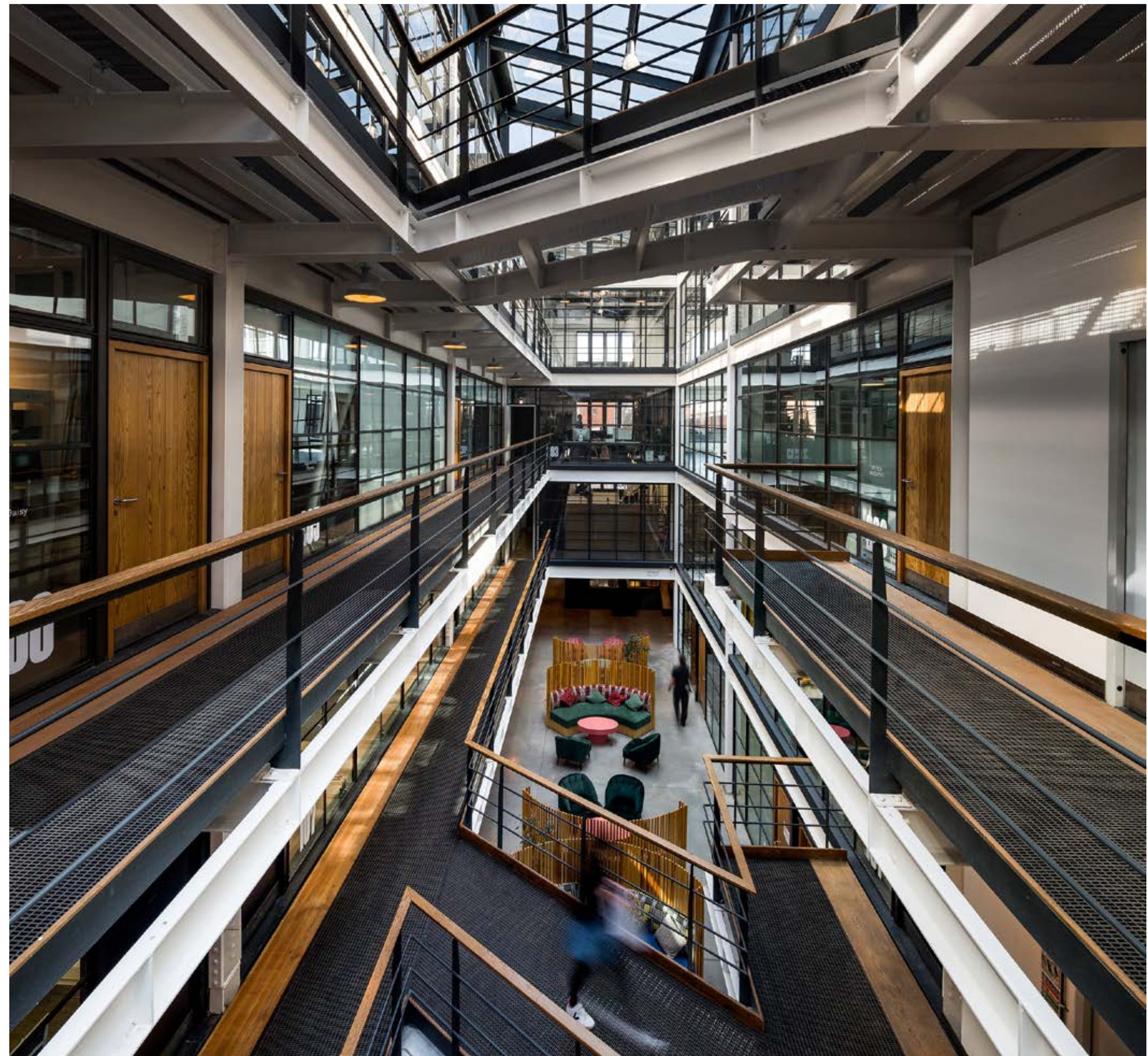
Great Western Studios is a thriving workspace community in West London offering studios, co-working desks, meeting rooms and event space for professionals, artists, designers, tech pioneers, product innovators and the creative industry trail blazers.



Studios available
1,000 - 7,000
square foot

Whatever space you need for your business to thrive, you'll find it here at Great Western Studios.

We offer purpose designed spaces of all sizes so whether you're an artist out-growing your current space or a business looking to be part of the West London creative revolution.



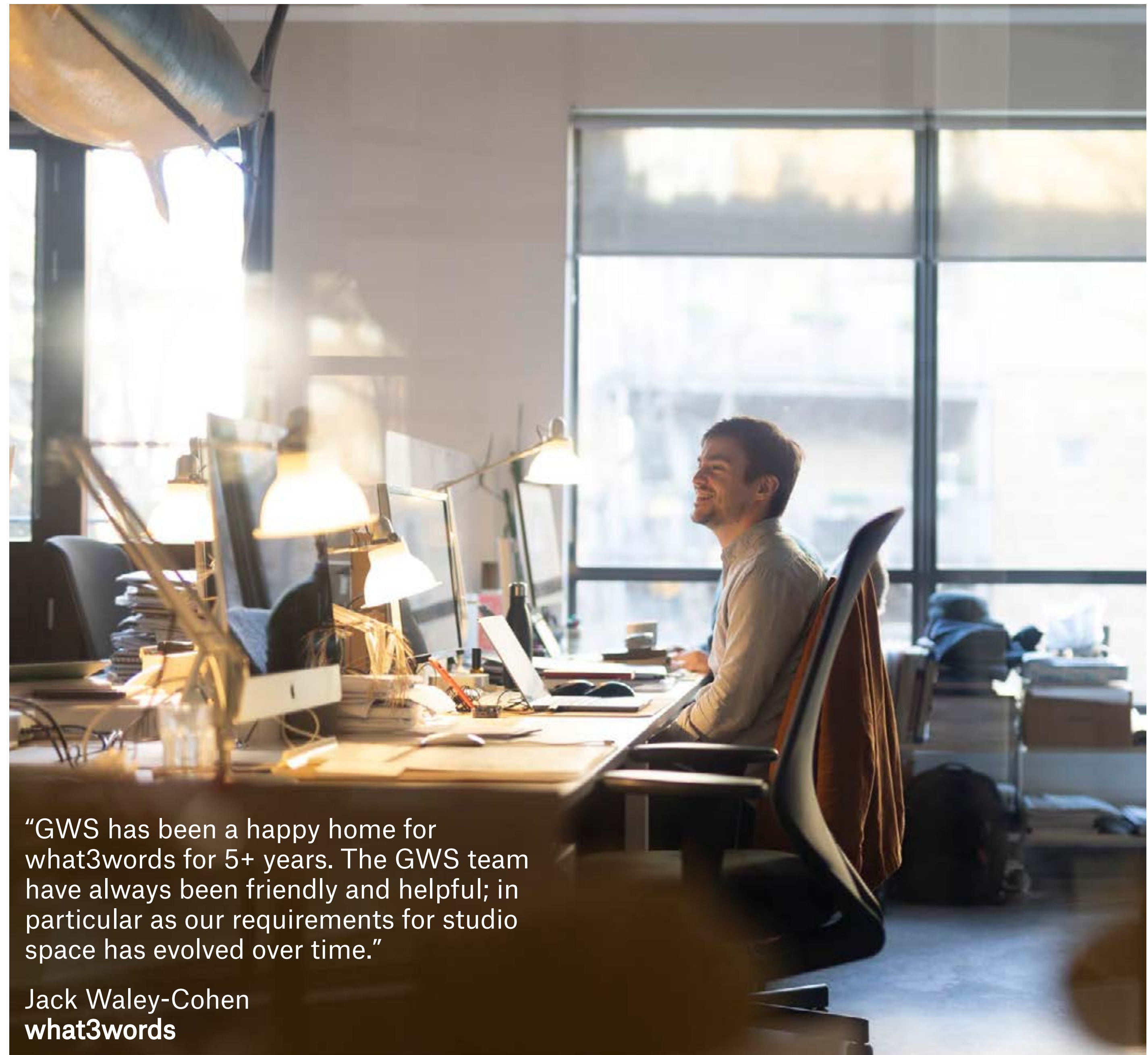


MAKE IT YOURS

FLEXIBLE SPACES

Up to 7,000 sq ft of adaptable studio space, flooded with light, framed by double-height ceilings and uninterrupted canal views.

Location address of GWS - what3words ([///sculpture.boot.avoid](https://www.what3words.com/sculpture.boot.avoid))



“GWS has been a happy home for what3words for 5+ years. The GWS team have always been friendly and helpful; in particular as our requirements for studio space has evolved over time.”

Jack Waley-Cohen
what3words

We also offer The Depot co-working space, which is fully fitted and serviced, with allocated furniture. Members benefit from access to all building facilities including our atrium, meeting room and cafe.

The Depot's licenses offer flexibility to desk users with a 3 month minimum and a rolling monthly contract thereafter. Desk spaces are also available on a daily or weekly basis for studio holders.

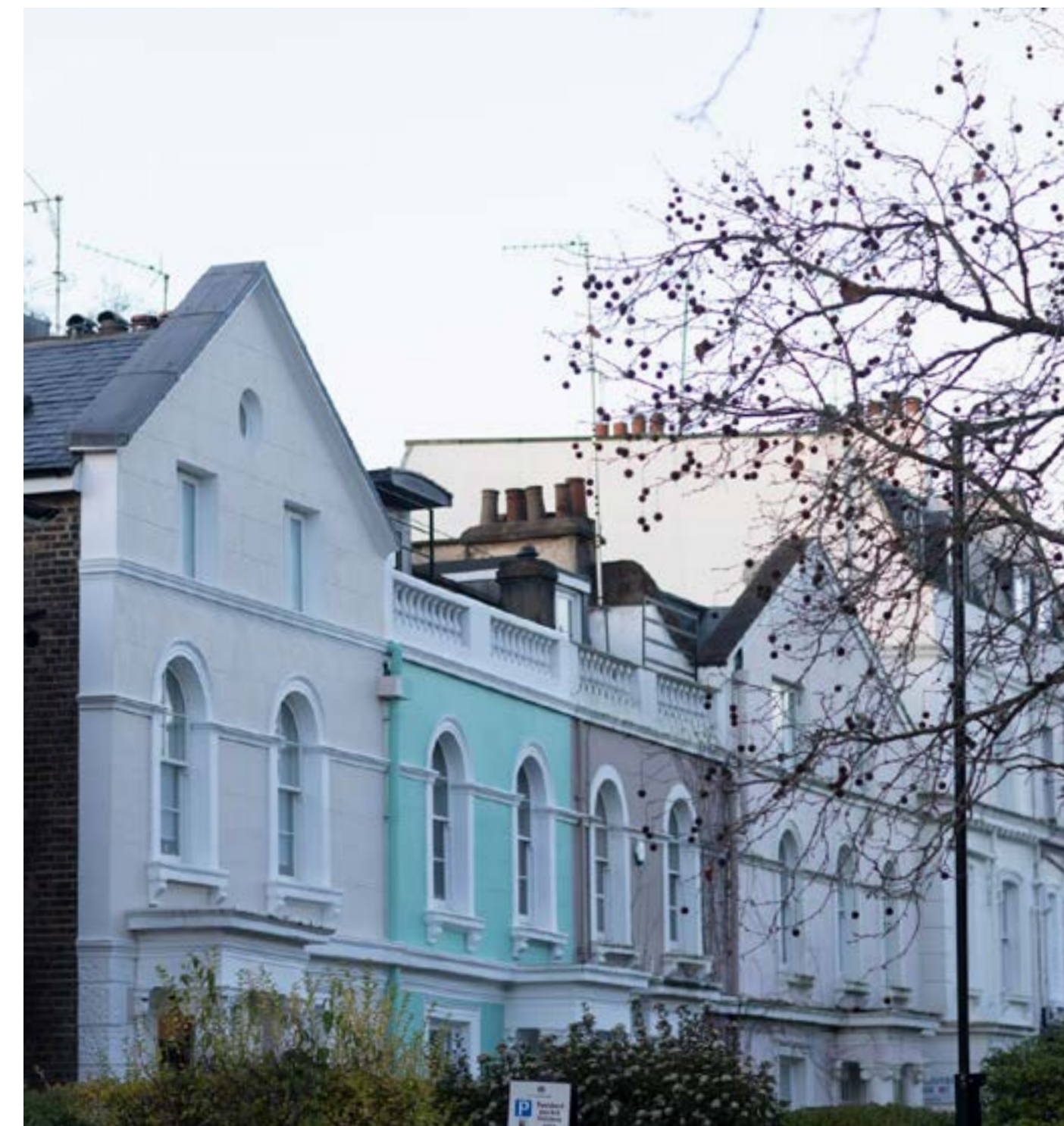


THE LOCATION

The studios are within walking distance of Portobello and Notting Hill, home of 'Museum of Brands' the famous Portobello Market and Electric Cinema. Surrounded by fantastic pubs, restaurants, cafés and supermarkets Great Western Studios is perfectly situated for convenience, leisure and entertainment.

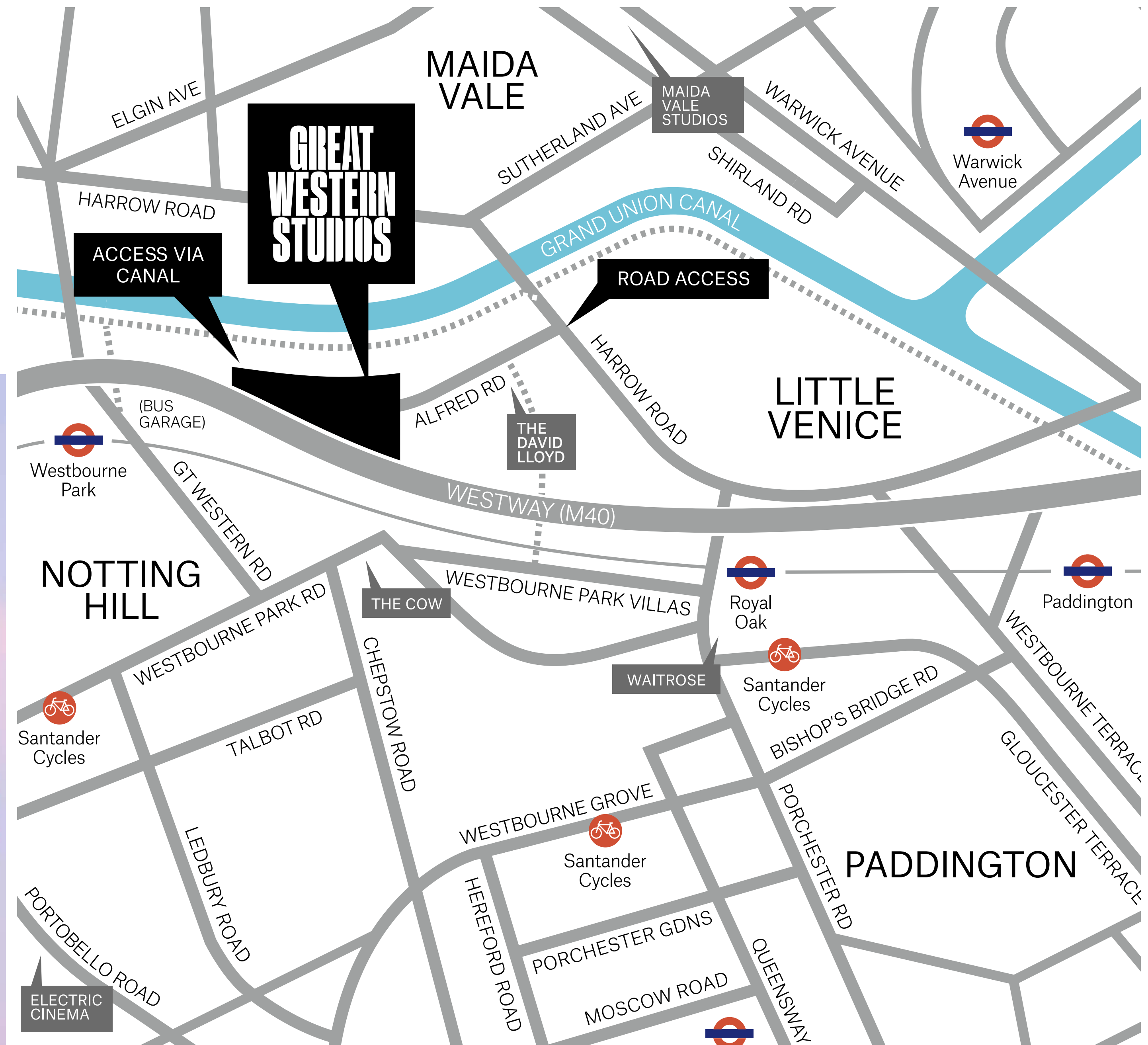


Perfectly positioned with easy access to some of West London's most loved cafés, restaurants and social spots. Enjoy relaxed mornings at local coffee favourites such as Mimos Cafe Bar, explore a diverse dining scene from vibrant Middle Eastern cuisine at Paramount to classic Italian at Bizzarro, and unwind in popular nearby pubs including The Westbourne and The Cow. The Canal Café Theatre and the renowned Portobello and Golborne Road markets are also close by.

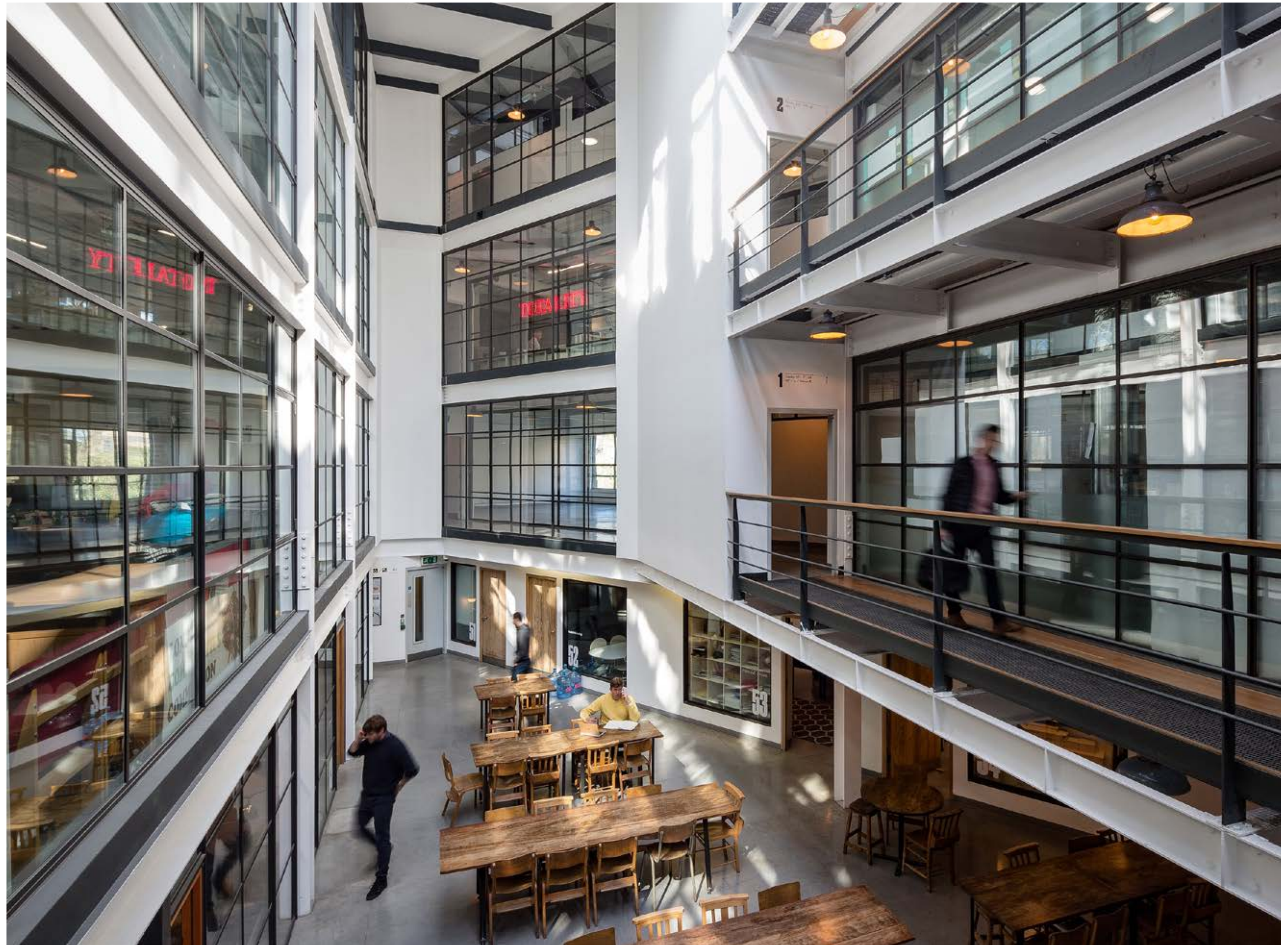


GETTING HERE

Westbourne Park and Royal Oak Underground stations are both within easy reach, providing quick access to the Circle and Hammersmith & City lines, while Paddington Station nearby offers national rail services, the Elizabeth line and Heathrow Express. Multiple bus routes serve the area, and cycling and walking are made easy local streets and canal paths.



WHAT'S ON OFFER?



Our studio spaces are accessible 24 hours a day, 7 days a week and managed by a dedicated and friendly on-site Facility Management team ensuring you have seamless access and assistance whenever you need it.




Our cafe serves breakfast and lunch with a large dining area seating over 120 guests.



At the heart of Great Western Studios is a bright, central atrium serving as a flexible communal hub for informal meetings and events like exhibitions and talks.

AND THERE'S MORE...

 On-site parking

 24hr security

 Marketing support

 Secure bike storage

 Dog friendly

 Wellness classes

 On-site showers

 Super-fast internet

 In-house and partner discounts

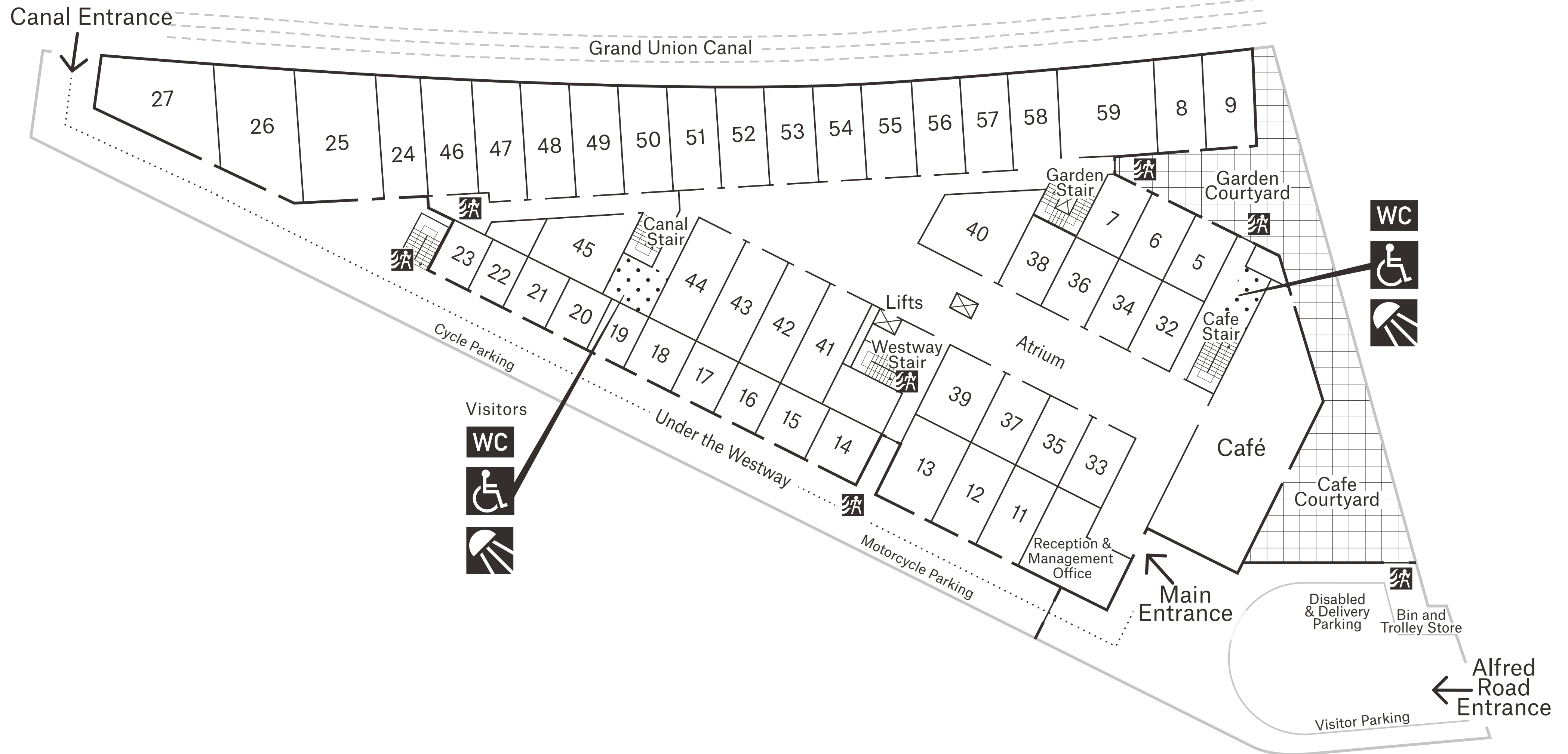
Great Western Studios also benefit from a welcoming courtyard and outdoor spaces, offering a calm spot to take a break, enjoy fresh air or have informal conversations away from the workspace.

Sculpture kindly loaned by Emily Young



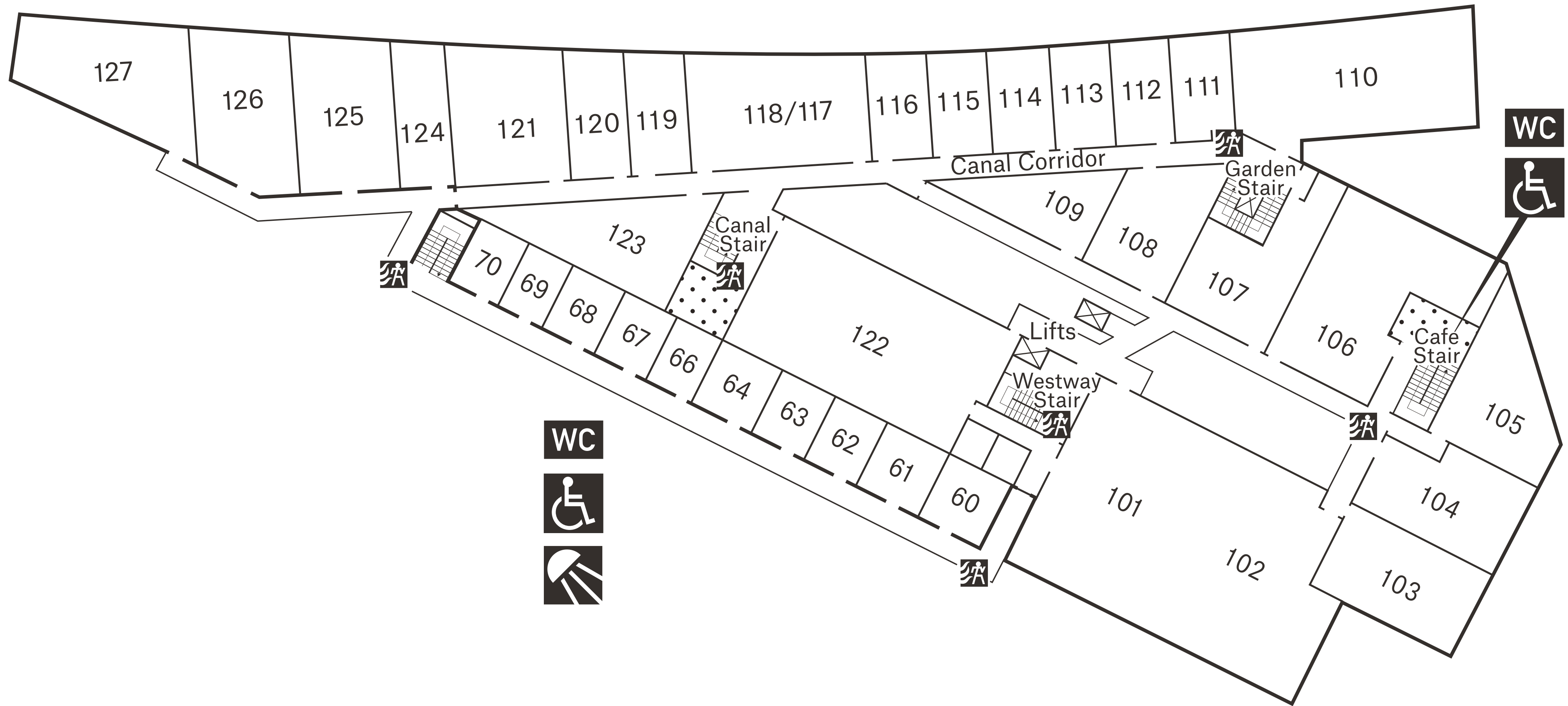
GROUND

Studios from 150 – 950 sq ft



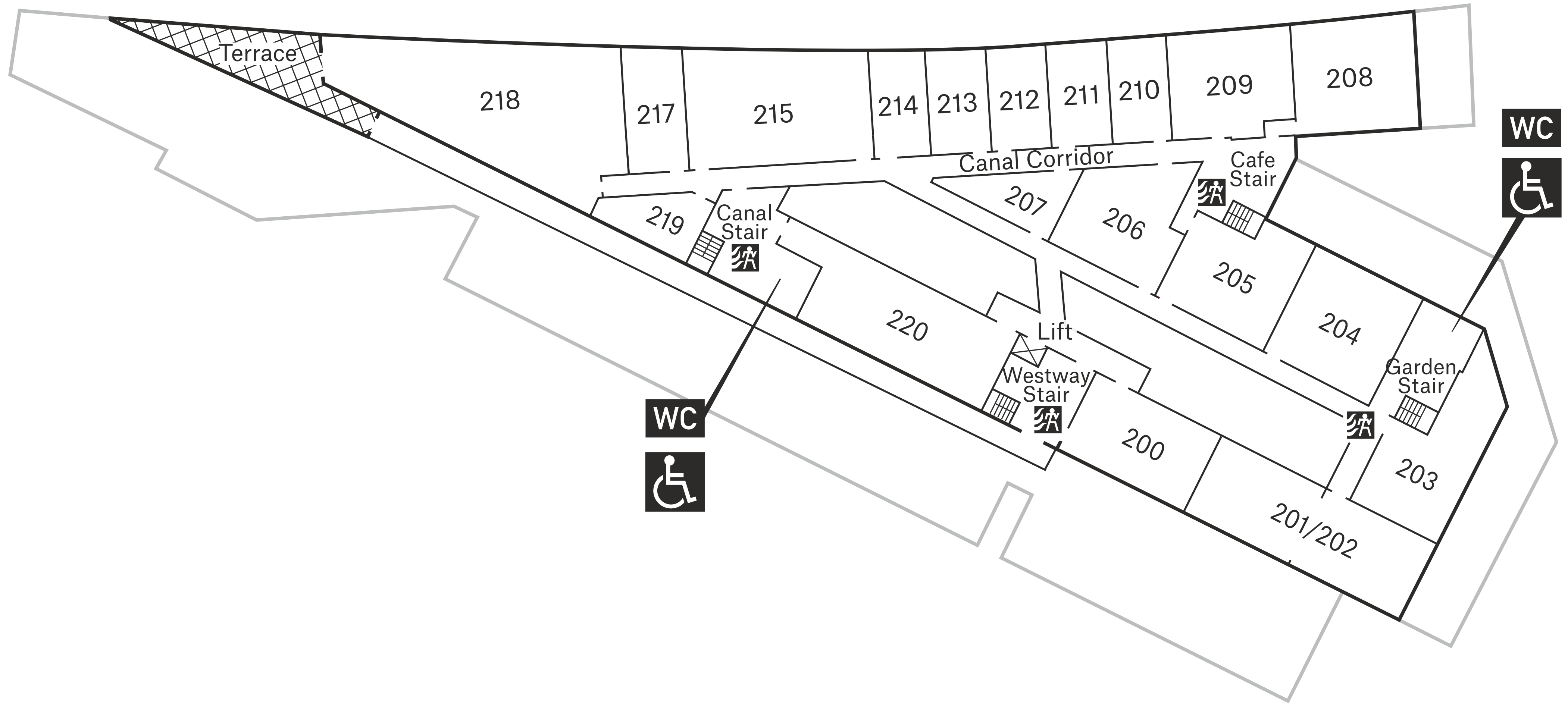
FIRST

Studios from 165 – 1,650 sq ft



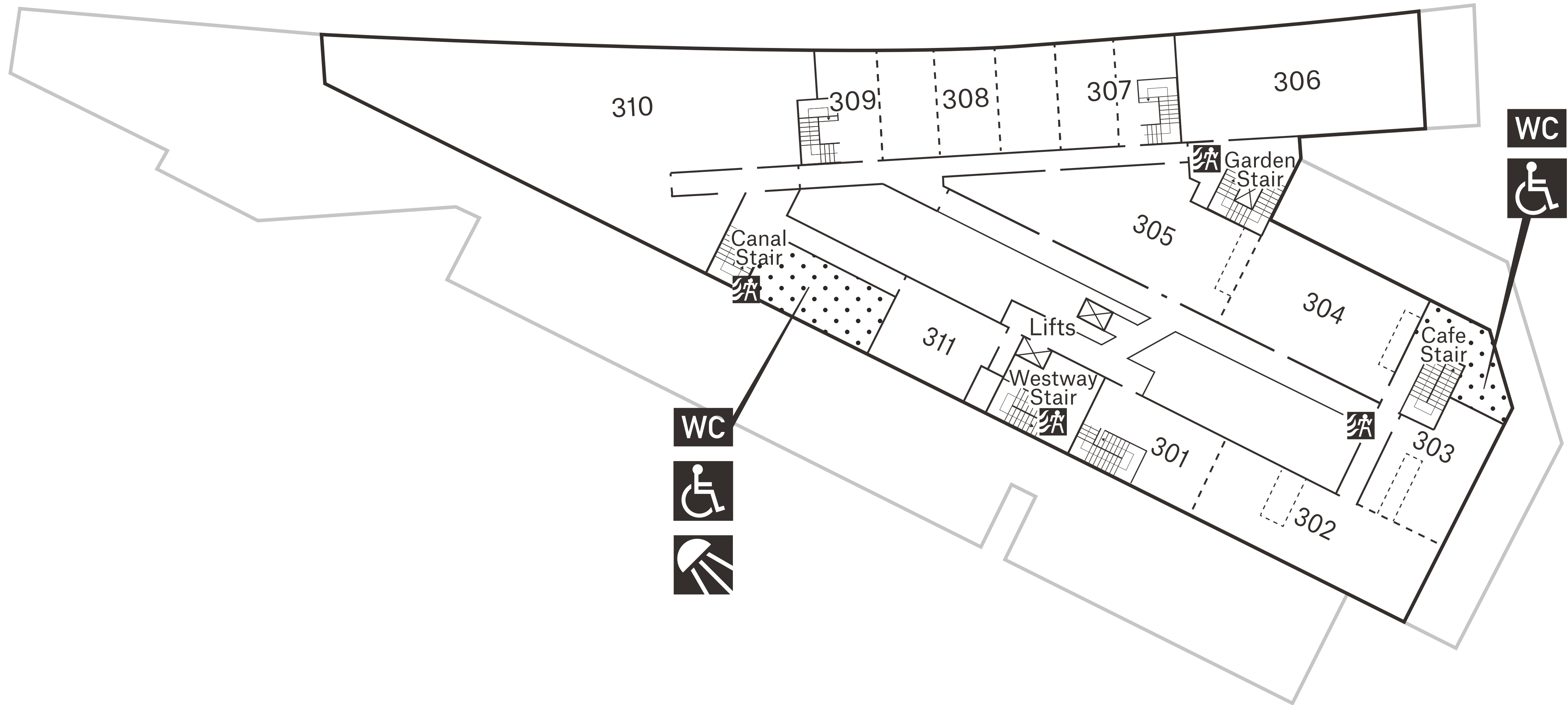
SECOND

Studios from 300 – 2,000 sq ft



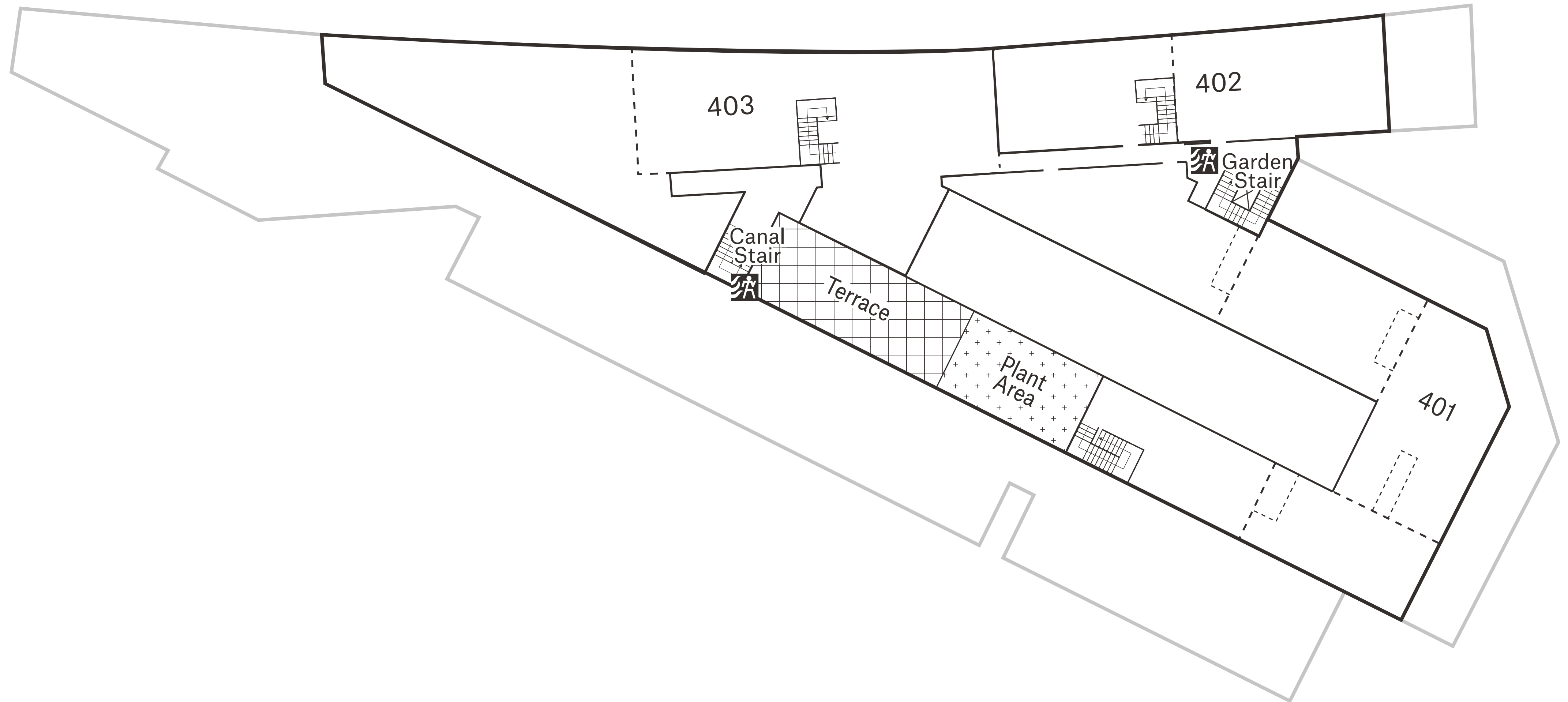
THIRD

Studios from 500 – 7,000 sq ft



FOURTH

Studios from 500 – 7,000 sq ft



GREAT WESTERN STUDIOS

taylorrosen@pilcher.london
tel. 07834 789 346

simonrinder@pilcher.london
tel. 07734 488 286