




Offices To Let

High Point, 4 Sandy Hill Business Park, Amington, Tamworth, B77 4DU

Part Ground Floor | 1,633 sq ft

 **JLL** SEE A BRIGHTER WAY

[jll.com](https://www.jll.com)

High Point/ Tamworth

Description

High Point is a two storey office building built in 2007. The available suite is on the ground floor and is to be upgraded with new LED lighting, new carpeting and redecorated. The building benefits from a reception and male, female and disabled WCs off, all finished to an exceptionally high standard. It is set in a landscaped environment with allocated car parking adjacent. Overspill car parking can be made available by separate negotiation. The suite is offered on a new lease on flexible terms.

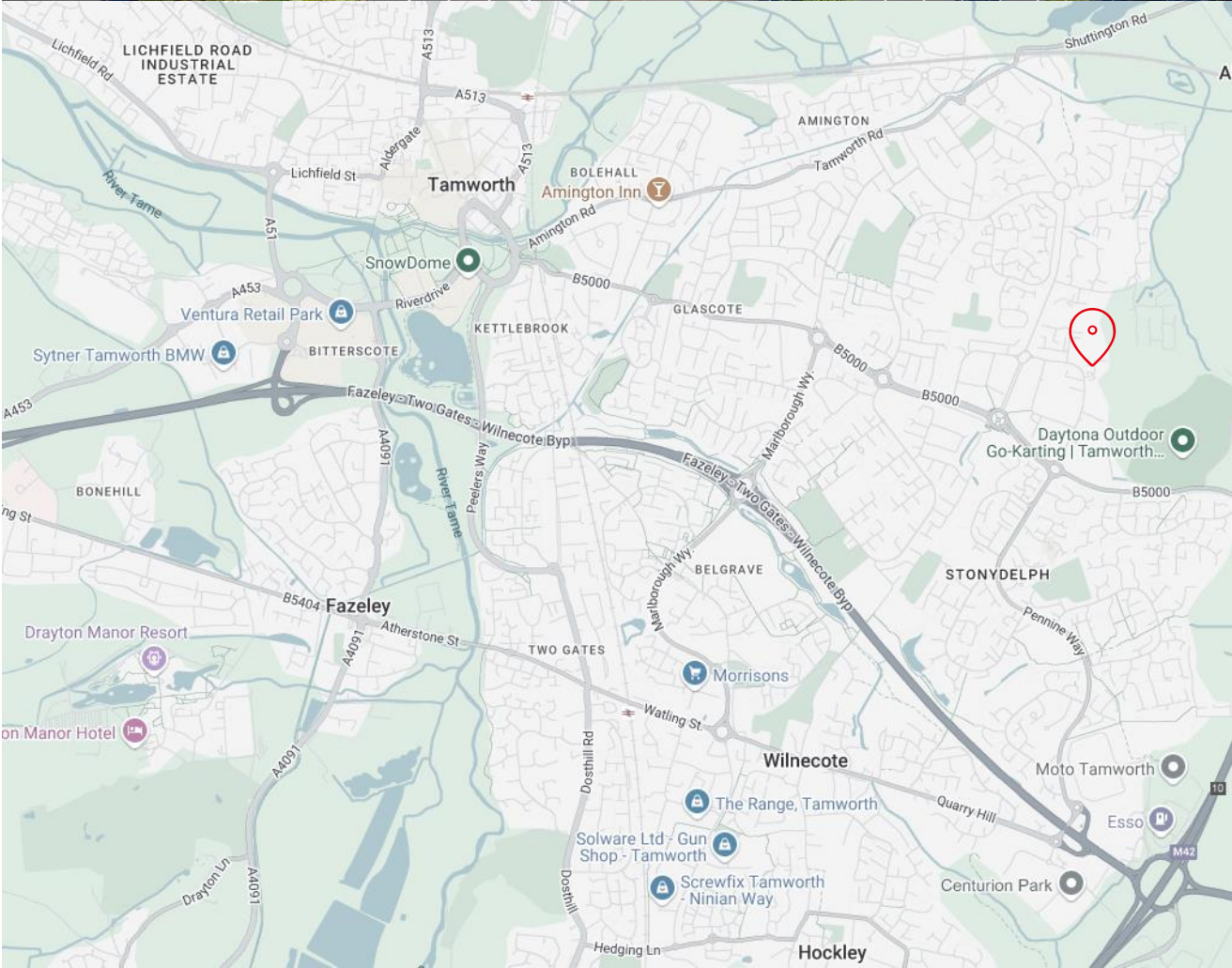
Location

Sandy Hill Business Park lies at the heart of the Midlands, approximately one mile from Junction 10 of the M42 and two miles from Tamworth town centre. The Midlands motorway network provides direct access to East Midlands Airport and Nottingham to the north and Birmingham Airport, Birmingham International Station and the NEC approximately 12 miles to the south. Amington is served by a range of local bus services.

The business park offers office and business space of exceptional quality in an attractive landscaped setting.

Accommodation

	Sq ft (NIA)
Part Ground Floor	1,633
Car Parking: 8 Spaces available	



High Point/ Tamworth

Specification

The premises provide modern office accommodation, and will benefit from:

- Suspended ceilings
- LED lighting
- Fully accessible 150mm raised floors
- Direct expansion split air conditioning system
- Carpeted office space
- High quality fittings and finishes throughout
- High quality WC and shower facilities
- Fully DDA compliant
- On site CCTV

EPC Rating

B(32)

Viewings

JLL

Jonathan Carmalt

jonathan.carmalt@jll.com

+44 (0)7967 184245

Peter J Hicks & Co

Peter Hicks

peter@pjhicks.co.uk

+44 (0)1827 60519

Disclaimer

JLL for themselves and for the vendors or lessors of this property whose agents they are, give notice that:- a. the particulars are set out as a general outline only for guidance and do not constitute, nor constitute part of, an offer or contract; b. all descriptions, dimensions, references to condition and necessary permissions for use and occupation, and other details are believed to be correct, but any intending purchasers, tenants or third parties should not rely on them as statements or representations of fact but satisfy themselves that they are correct by inspection or otherwise; c. no person in the employment of JLL has any authority to make or give any representation or warranty whatever in relation to the property; d. Any images may be computer generated. Any photographs show only certain parts of the property as they appeared at the time they were taken.

© 2025 Jones Lang LaSalle IP, Inc.

