


AREA PLAN
CANONBURY BUSINESS CENTRE
 New North Road, LONDON, N1

Building Two - Ground Floor

Net Internal Area

	NIA - Office	471.9 sq m	5079 sq ft
---	---------------------	-------------------	-------------------

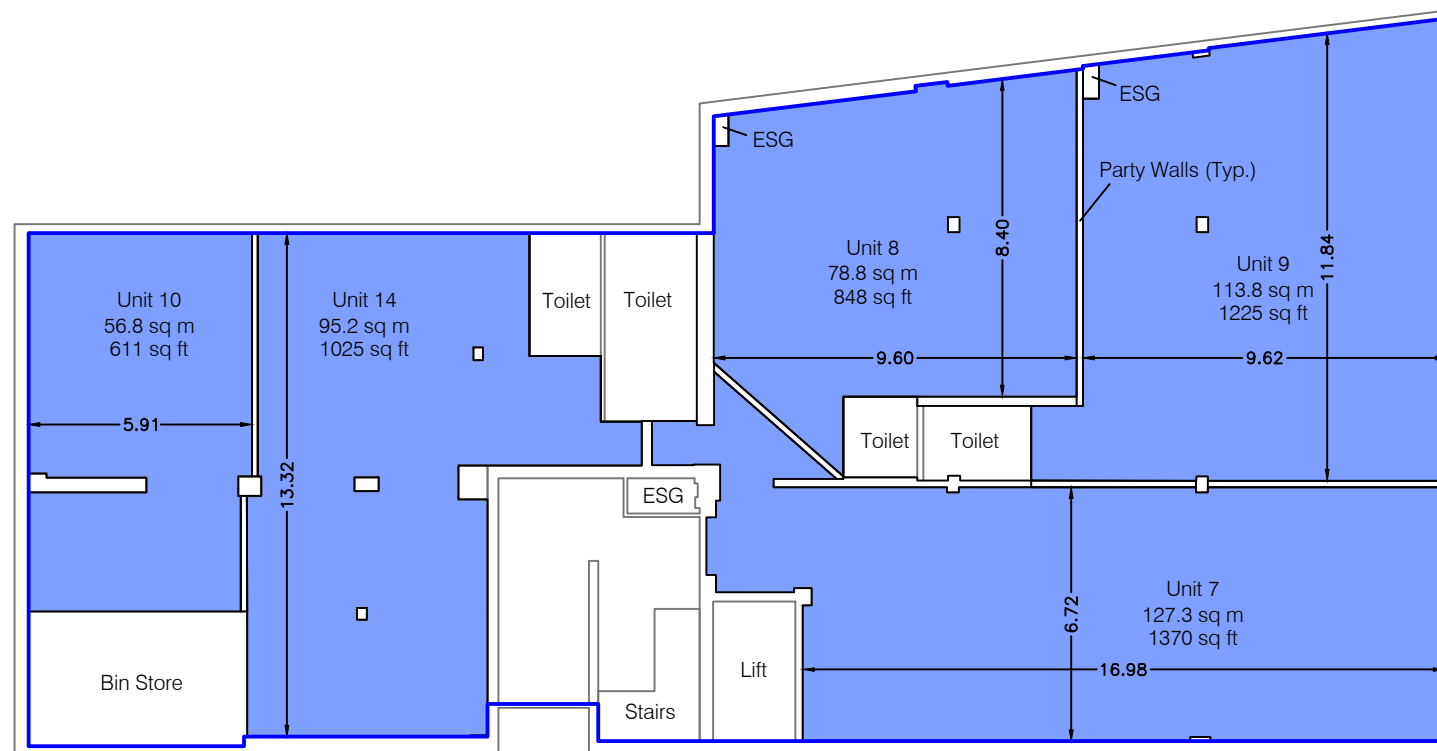
TOTAL NIA: 471.9 sq m 5079 sq ft

The following has been EXCLUDED from the TOTAL NIA:

ESG	0.7 sq m	8 sq ft
Party Walls	5.6 sq m	60 sq ft
Toilets	28.9 sq m	311 sq ft

Gross Internal Area

	GIA	586.0 sq m	6308 sq ft
---	------------	-------------------	-------------------



CANONBURY YARD

A dashed line denotes assumed - inaccessible due to fit out.
 This drawing indicates the extent of the areas quoted,
 produced to an accuracy commensurate with standard
 presentation scales. It is held in a scaled digital CAD format.

Dwg No. LF2107-B2-AREA-G
 Issue A September 2019
 Scaled for presentation - 1:200 @ A3

