

DUBLIN ONE

493-511 NORTH CIRCULAR ROAD
DUBLIN D01 A2Y5

FOR SALE BY PRIVATE TREATY



INTRODUCTION

JLL has been appointed as exclusive selling agents for the modern and contemporary Dublin One Hotel.

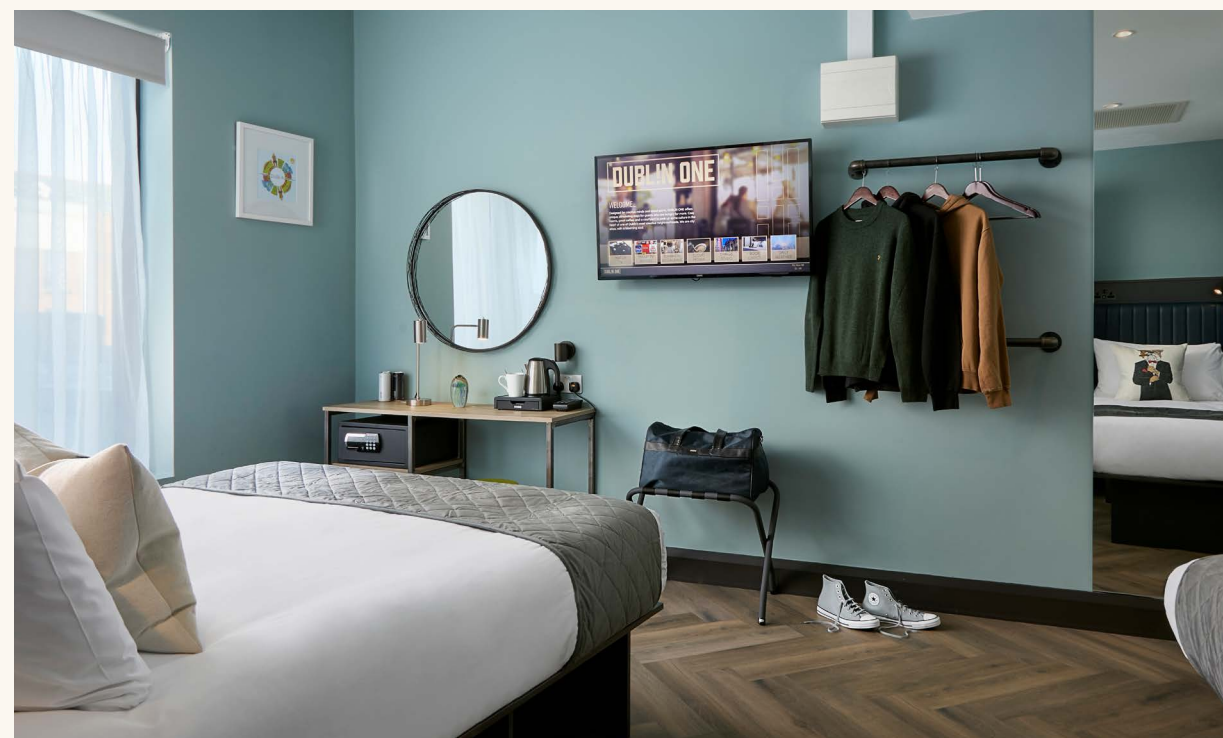
This exceptional hotel property, situated in a prime north city centre location, is almost brand new, having opened in Q2 2022.

Offered for sale free of existing hotel operating agreement, if desired, this modern 163-guestroom four-star hotel boasts an enviable Dublin City Centre location, all positioned on a large 0.5-acre freehold site.

The large scale hotel, which importantly is rated A2 BER and LEED Gold, also includes a popular restaurant and bar, the famous traditional Big Tree Irish pub and an expansive rear terrace.



An established trading location, just 950 metres from Dublin's famous O'Connell Street.





INVESTMENT HIGHLIGHTS



Occupying a prime location in Dublin City Centre, just minutes' walk from O'Connell Street and with approx. 413,000 residents living within a 5km radius.



A full service 163-guestrooms lifestyle hotel, with a large ground floor restaurant and bar, popular coffee dock, the famous Big Tree Irish pub and an expansive rear terrace.



Numerous demand drivers nearby including the 650 bed Mater Hospital, which is located just 300 metres walk away and Croke Park Stadium (82,300 capacity), which is only 600 metres away.



Significant F&B offering, comprising a unique blend of the contemporary Botanical restaurant and popular rear terrace, with the traditional and timeless Big Tree pub.



Extensive and high specification hotel, extending to approx. 5,554 sq. m (59,782 sq. ft), all on a 0.5-acre freehold corner site.



With full flexibility to rebrand the hotel and operate it directly, this asset has high levels of registered interest from leading international brands.



Built to the latest modern specifications and with fully air-conditioned bedrooms, the development is rated A2 BER and LEED Gold.



The Dublin hotel market is one of the most attractive markets in Europe, having posted an impressive +11% RevPAR growth rate in 2023.



DUBLIN ONE

Thriving location, close to numerous large scale demand drivers

Distance from Hotel

Inhabitants

1km	37,000
2km	104,000
5km	413,000

A PRIME & HIGHLY ACCESSIBLE LOCATION

Dublin One Hotel is located on a busy and high-profile corner site, between the neighbourhoods of Phibsborough and Drumcondra and just 950m north of O'Connell Street. The high profile 0.5-acre freehold corner site boasts approx. 90 meters of frontage onto both Dorset Street and the North Circular Road.

The locality is a densely populated commercial and residential district of Dublin City, with over 400,000 residents living within a 5km radius. The property is located just 600 meters from Croke Park, Ireland's largest sports stadium (and Europe's third largest stadium) and home to the GAA. There are currently six concerts happening in Croke Park in 2024.

The property is situated just 300 metres from the Mater Hospital, which is a major public and private hospital with over 700 beds, and over 3,000 employees. In 2023, the Mater catered for almost 420,000 patients, including 240,000 through their out-patient service.

Plans for a new Metro North interchange at the nearby Mater Hospital, which once constructed will carry 50 million passengers annually, will also boost the long-term accessibility of the site, linking it directly to Dublin Airport. Finally, the hotel is located less than 20 minutes from Dublin Airport by car, 10 minutes' walk from O'Connell Street and just 20 minutes walking distance from Temple Bar.





Just 950 metres
north of O'Connell
Street in Dublin
City Centre

DUBLIN ONE

BOASTING STYLISH MODERN GUESTROOMS

The hotel offers a total of 163 high quality, modern and fully air-conditioned guestrooms ranging from 14.4 sq. m to 24.6 sq. m in size. Catering to both corporate and leisure guests, the sleek guestrooms boast an average room size of 16.1 sq. m.

All guestrooms offer full air conditioning and highest specification en-suites.

Room Type	# Keys	Average Area (Sq. M)
Double Room	90	14.4
Twin Room	46	14.6
Family Room	17	24.6
Family Suite	1	22.4
Accessible Room	9	23.7
TOTAL	163	16.1

A rare opportunity to acquire a profitable stylish lifestyle hotel with expansion potential, in the heart of Dublin City



DUBLIN ONE

EXTENSIVE RESTAURANT, BAR & TERRACE OFFERING

With over 400,000 local residents in the neighbourhood and limited quality food and beverage (F&B) competition, the hotel boasts and expansive F&B offering, spanning a traditional pub, all day restaurant and bar (Botanical), an attractive outdoor terrace area and a popular coffee dock.

Botanical comprises the hotel's large all day casual dining restaurant, which includes a feature bar, private meeting area and boasts 4-metre ceiling heights.

To the rear, the hotel benefits from a large outdoor rear terrace, with further potential for outdoor dining, drinks, and BBQs, which can be highly lucrative on match and concert days.



**Expansive F&B
facilities, with no direct
competition nearby**

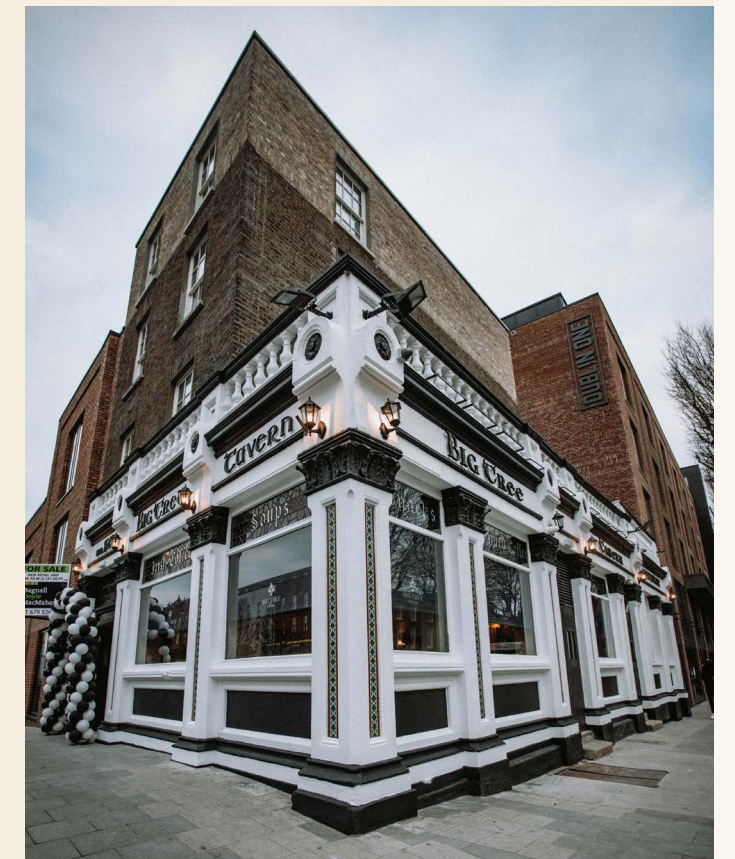


THE FAMOUS BIG TREE PUB

One of Dublin's oldest and best-known traditional pubs, The Big Tree was retained as part of the development and is included in the sale.

The standalone pub is accessed via a separate entrance and is located at the western corner of the site, boasting attractive corner frontage.

Spanning ground and basement levels, it presents an opportunity to own an authentic and much loved neighbourhood pub, attracting local residents, visitors to Croke Park and hotel guests alike.



DUBLIN IS A HIGHLY ATTRACTIVE HOTEL MARKET

Dublin is a highly attractive hotel investment location, supported by solid trading performance fundamentals. Tourism demand is buoyed by strong passenger traffic at Dublin Airport, which catered for a total of 32 million passengers during 2023.

Dublin is also a popular destination for business travellers, hosting numerous conferences, trade shows, and corporate events throughout the year.

Furthermore, there was no major concert held in nearby Croke Park in 2023, whilst in 2024 the venue will welcome major music acts, including Coldplay, Bruce Springsteen and AC/DC.

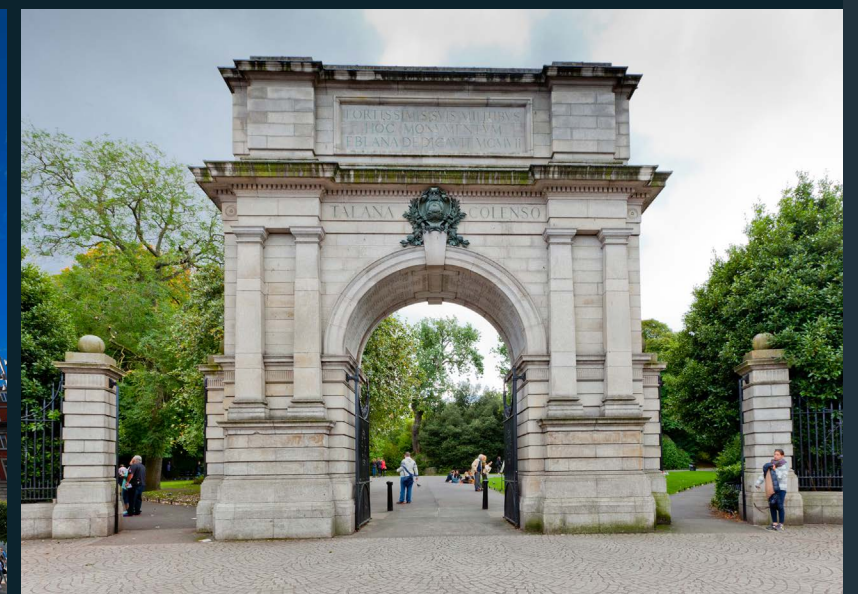
Dublin's Aviva stadium also welcomes major sporting events such as the UEFA Europe League Final and American College Football in 2024. The stadium will also welcome major music artists such as Taylor Swift (3 nights of the Eras tour) and Pink in 2024.

Strong underlying demand is also clearly evidenced by +11% RevPAR growth in the Dublin hotel market in 2023.

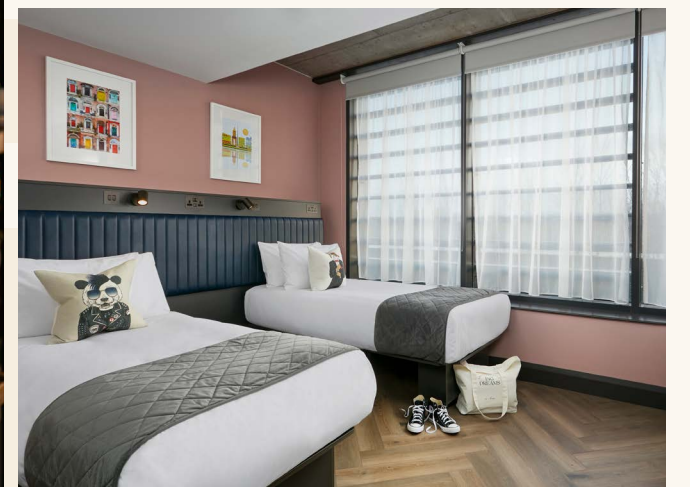
Dublin has also recently experienced significant new infrastructure projects including Luas Cross City, a runway extension at Dublin Airport, and a planned underground Metro line connecting the airport and the city centre.



Dublin posted an impressive +11% RevPAR growth in 2023



DUBLIN ONE



DUBLIN ONE

PROPOSAL

JLL has been appointed as exclusive real estate advisor to offer for sale Dublin One Hotel, on a private treaty basis.

All questions or requests for information are to be only directed to JLL.

All communications and enquires should be submitted to the team below and no direct contact should be made with hotel employees or management.

CONTACTS

Dan O'Connor

Head of Hotels & Living
Ireland
T: +353 1 673 1609
E: daniel.oconnor@jll.com

Isobel Horan

Senior Vice President
T: +353 1 673 1656
E: isobel.horan@jll.com

Will Duffey

Head of EMEA Hotel
Capital Markets
T: +44 20 7087 5587
E: will.duffey@jll.com

Jayne Brennan

Analyst
T: +353 1 673 1638
E: jayne.brennan@jll.com

PSP Number: PSP 002273



BER No. 800798969

Energy Performance Indicator 159.43 kWh/m²/yr 0.29

Disclaimer: © 2024 Jones Lang LaSalle Limited. All rights reserved.

Data within this brochure is based on material/sources that are deemed to be reliable and has not been independently verified by JLL. JLL makes no representations or warranties as to the accuracy, completeness, or suitability of the whole or any part of the brochure which has been produced solely as a general guide and does not constitute advice. No part of this publication may be reproduced or transmitted in any form or by any means without prior written consent of JLL. JLL, its officers, employees shall not be liable for any loss, liability, damage, or expense arising directly or indirectly from any use or disclosure of or reliance on such brochure. JLL reserves the right to pursue criminal and civil action for any unauthorized use, distribution, or breach of such intellectual property. June 2024. Designed and produced by Creativeworld. Tel +353 1 447 0553.

