



Ayers & Cruiks
COMMERCIAL

Warren House, 10-20 Main Road, Hockley, SS5 4QS
To Let | 717 to 1,278 sq ft
Offices To Let In Hockley

Warren House, 10-20 Main Road, Hockley, SS5 4QS

Summary

- Rent: £7,500 - £13,500 per annum
- Business rates: Interested parties are advised to confirm the rating liability with Rochford Council on 01702 546366
- VAT: To be confirmed
- Legal fees: Ingoing tenant is liable for both parties legal costs
- Lease: New Lease

Contact & Viewings

Neil Burroughs
01702 608035
neil@ayerscruiks.co.uk

Cameron Cruiks
01702 608045
cameron@ayerscruiks.co.uk

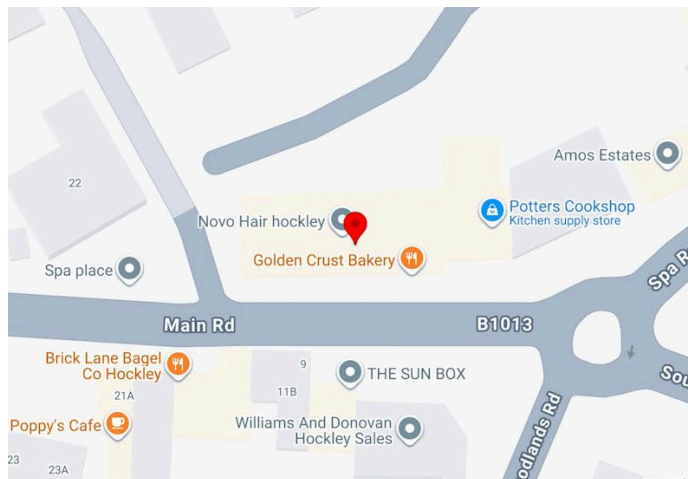
Darrell Clarke
01702 608039
darrell@ayerscruiks.co.uk

Bradley Hair
01702 608057
bradley@ayerscruiks.co.uk

Offices

86-88 Baxter Avenue,
Southend-On-Sea,
Essex,
SS2 6HZ
Tel: 01702 343060

Burgundy Court
64/66 Springfield Road,
Chelmsford,
Essex,
CM2 6JY
Tel: 01245 202555



Key Points

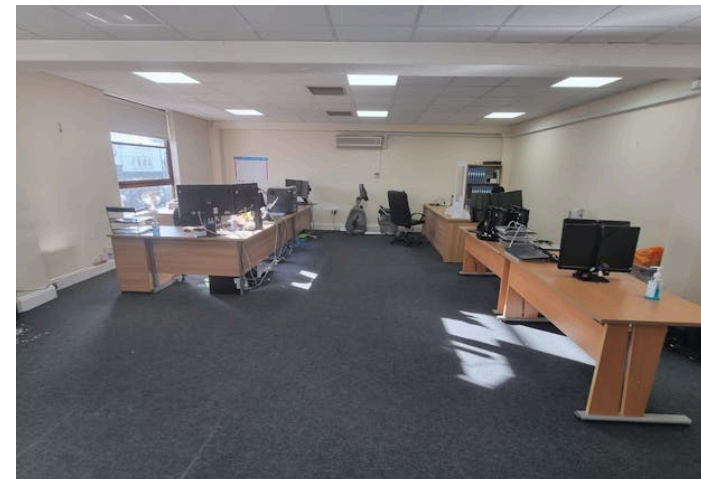
- Hockley town centre
- Close to mainline railway station
- On site car parking
- New lease available
- Rent only £7,500 per annum exclusive

Description

First-floor office suite located within a purpose-built office building with shops on the ground floor and offices on the first and second floors. There is car parking to the rear, which is operated on a first come, first served basis.

Location

The property is situated on the Main Road in Hockley. Access to the offices is via a self-contained entrance to the rear, directly accessible from the car park. Benefiting entry phone system.



Accommodation

Floor/Unit	Description	sq ft	sq m	Availability
2nd	Suite 5	1,278	118.73	Available
Unit	Suite 2	717	66.61	Available

Viewings

Strictly by prior appointment via landlords appointed agents Ayers & Cruiks

Terms

The premises is available to let upon a new full repairing and insuring lease for a term to be agreed.

Rent

Suite 2 - £7,500
Suite 5 - £13,500

