



CONNECTED

ENTERPRISE **POINT**

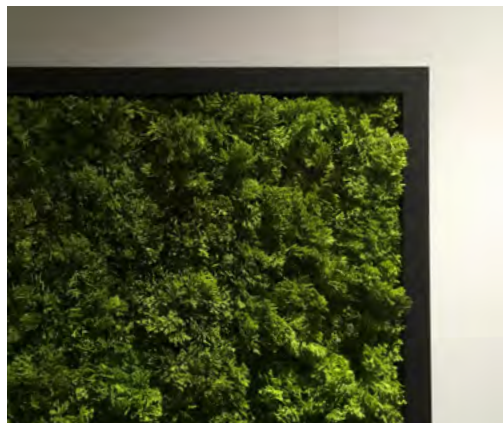
SHARSTON, SOUTH MANCHESTER **M22 9AF**



Perfectly placed for regional and global
CONNECTIVITY



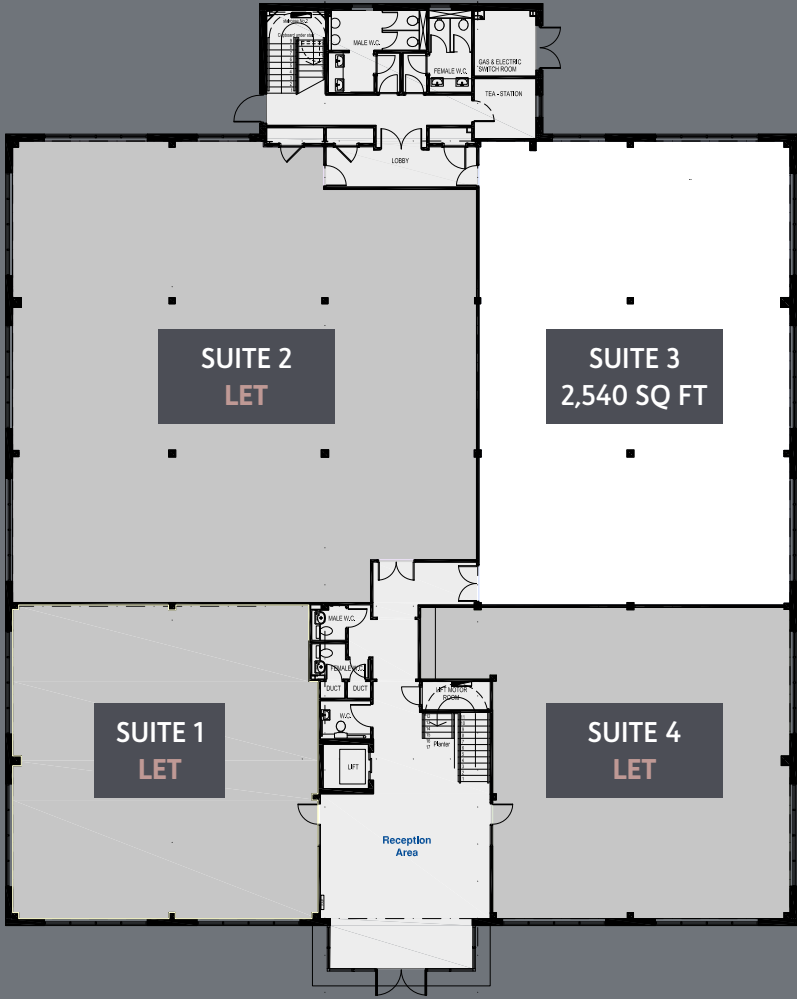
A
contemporary
welcome
for all.





*Adaptable Ground and
First Floor Workspace
for Evolving Business Needs*

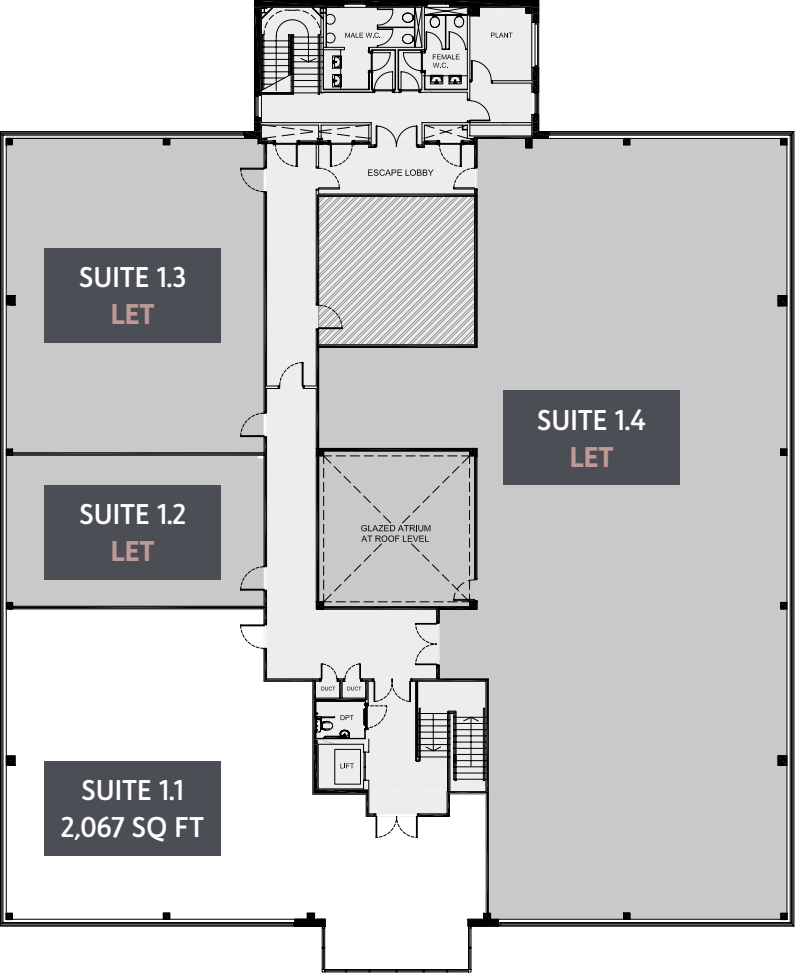
**2,067 -
2,540** sq ft



**Ground Floor
Workspace**

2,540 SQ FT

- Fully refurbished
- Optional A/C
- Significant on-site car parking
- External branding opportunity
- Immediate motorway access to both M56 and M60



**First Floor
Workspace**

2,067 SQ FT

- Fully refurbished
- Optional A/C
- Significant on-site car parking
- External branding opportunity
- Immediate motorway access to both M56 and M60

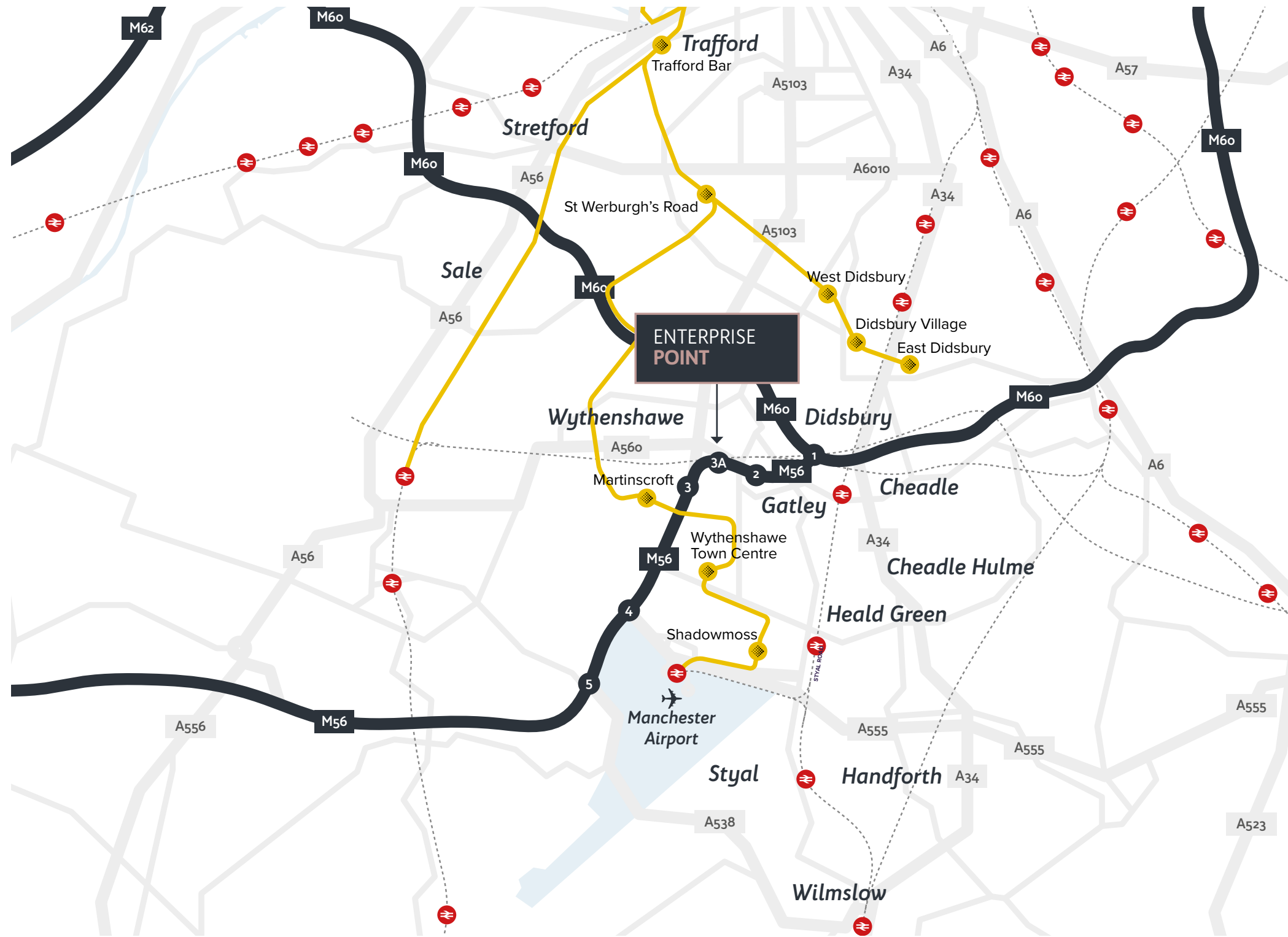


*Make a
move
and
take a
closer
look.*



**JUNCTIONS
2 & 3 M56**

*provide excellent connectivity
to the regional and national
motorway network.*



AMENITY

Enterprise Point is within easy reach of excellent staff facilities being approximately 1 mile from Gatley, Northenden and Baguley.

LOCAL AMENITIES

1. ALDI

 1 min
2. POST OFFICE

 1 min
3. SUBWAY

 1 min
4. SPAR

 1 min
5. GREGGS

 1 min
6. MCDONALDS

 3 min
7. TESCO

 5 min
8. LIDL

 5 min
9. NORTHCENDEN
BRITANNIA HOTEL
FARMERS ARMS
FIREAWAY PIZZA
NORTHCENDEN UNTAPPED
LOUNGE ABOUT
CO-OP
CROWN INN
COSTA
SUBWAY

 4 min
10. WYTHENSHAW
PARK

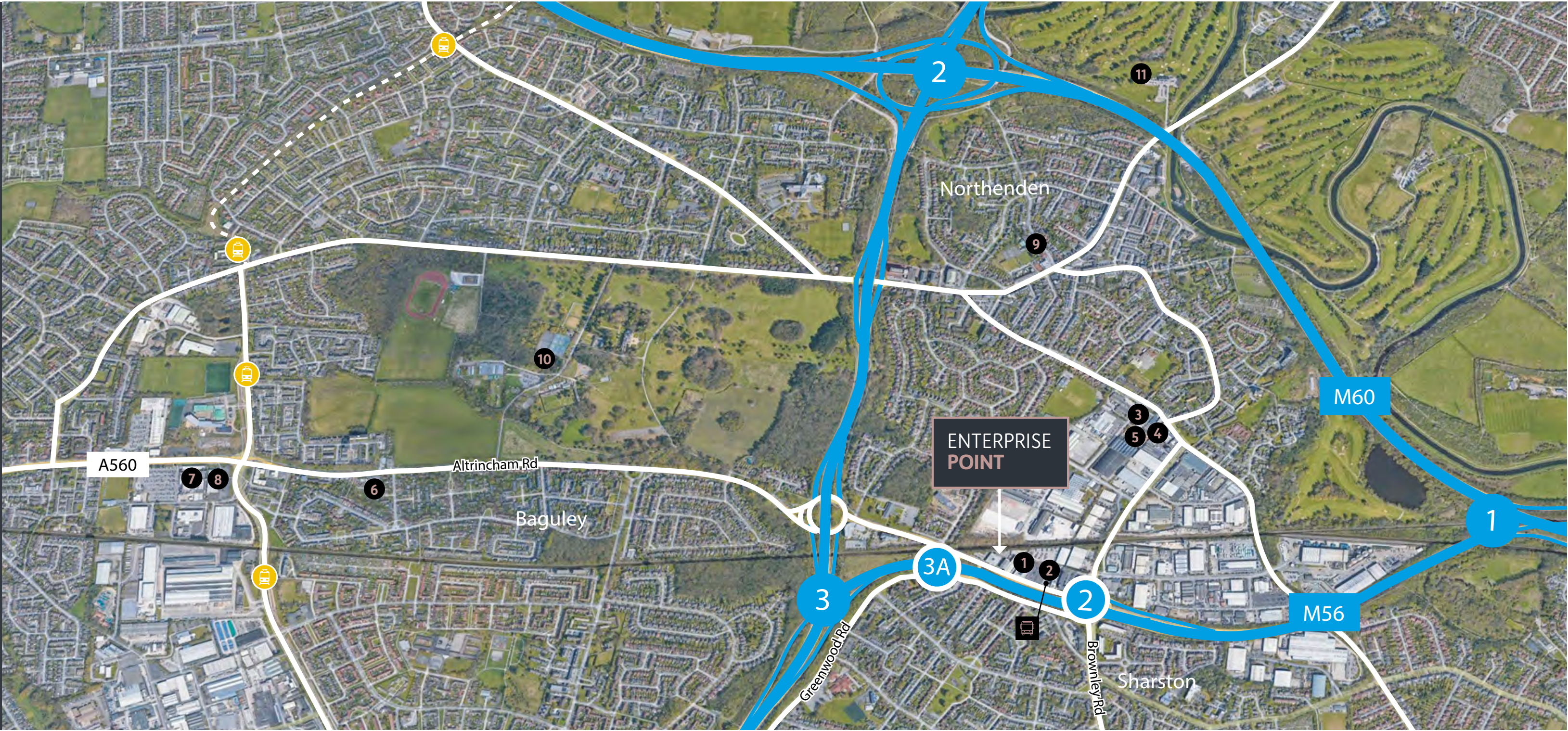
 5 min
11. NORTHCENDEN
GOLF CLUB

 7 min



LOCAL BUS SERVICES

There is a bus stop within 2 minutes walk providing local bus services via the X5 route (Stockport - Sharston - Sale Moor – Sale)



ENTERPRISE POINT

SHARSTON, SOUTH MANCHESTER M22 9AF

For more information or to arrange a viewing

Orbit
Developments
A MEMBER OF THE EMERSON GROUP

01625 588200
www.orbit-developments.co.uk

Richard Wharton
Richard.Wharton@eu.jll.com



James Dickinson
james@canningoneill.com



Misrepresentation Act 1967. Unfair Contract Terms Act 1977. The Property Misdescriptions Act 1991. These particulars are issued without any responsibility on the part of the agent and are not to be construed as containing any representation or fact upon which any person is entitled to rely. Neither the agent nor any person in their employ has any authority to make or give any representation or warranty whatsoever in relation to the property. (0325)