

STAGE

8-9 Well Court,
London, EC4

2,509 sq ft/ 233.10 sq m

Fully managed plug & play workspace
located in the heart of The City

COMPREHENSIVELY REFURBISHED BUILDING

FULLY FITTED AND FURNISHED WORKSPACE

PRIME CITY LOCATION

stage-re.co.uk



STAGE



MISREPRESENTATION ACT [COPYRIGHT] DISCLAIMER: Stage Real Estate Limited for themselves and for the vendor(s) or lessor(s) of this property whose agents they are, give notice that: 1. These particulars do not constitute, nor constitute any part of, an offer or contract. 2. None of the statements contained in these particulars as to the property are to be relied on as statements or representations of fact. 3. Any intending purchaser or lessee must satisfy themselves by inspection or otherwise as to the correctness of each of the statements contained in these particulars. 4. The vendor(s) or lessor(s) do not make or give and neither do Stage Real Estate Limited nor any person in their employment has any authority to make or give any representation or warranty whatsoever in relation to this property. Finance Act 1989: Unless otherwise stated all prices and rents are quoted exclusive of VAT. Property Misrepresentations Act 1991: These details are believed to be correct at the time of compilation but may be subject to subsequent amendment.

8-9 Well Court



8-9 Well Court is surrounded by inviting bars, restaurants, and shops, with close-by Bow Lane offering up small boutique and independent shops and wine bars – making it a popular dining and shopping destination.

Nestled within the historic Watling Street connecting to the City's modern quarter – with One New Change and Bloomberg Place, a short walk away.

Managed Workspace

- Fully fitted and furnished private workspace
- Fully managed by Workplace+ with a single monthly fee and, no upfront CapEx
- Flexible lease terms from 2+ years
- Hassle-free leasing

WORKPLACE+



What's Included?

CORE SERVICES



Rent



Business Rates



Service Charge



Fit out & Furniture



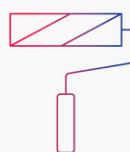
Utilities



Building Insurance



Account Manager



Dilapidations

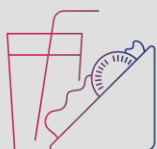


Fibre

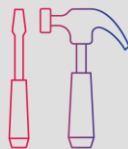


Cleaning

OPTIONAL SERVICES



Refreshments & Snacks



Fit Out Alterations



Health & Safety



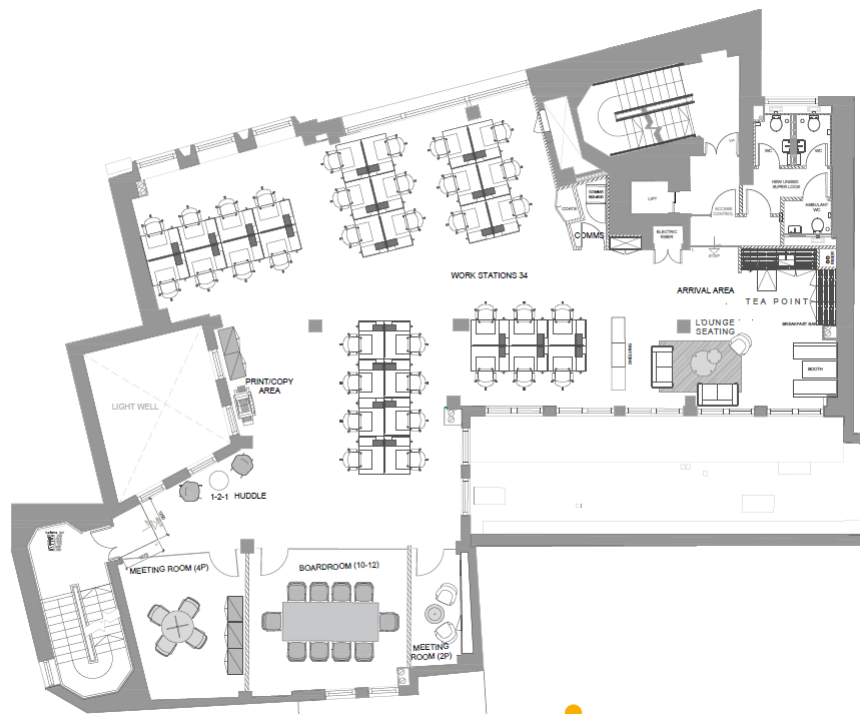
IT Support



Plants

2nd Floor

2,509 sq ft / 233.10 sq m



Indicative only. Not to scale.



[Virtual Tour Link](#)

Amenities and layout specification

- 34 fixed workstations
- 1 x 10-person board room
- 1 x 4-person meeting room
- 1 x 2-person meeting/call room
- Fully cabled
- Kitchenette and dining area
- Remodeled inviting reception
- Showers and cycle storage
- Passenger lift

Lease Term

A new lease for a term of 24 months is available direct from the landlord.

All-inclusive pricing

£135.00 per sq ft

£28,226 per month

£338,715 per annum

Contact

James Guyer


07885 770 728

james@stage-re.co.uk


Simon Lee

07769 745 449

simon@stage-re.co.uk

 @stagere

 @stagerelondon

 @stage_re_spotlight